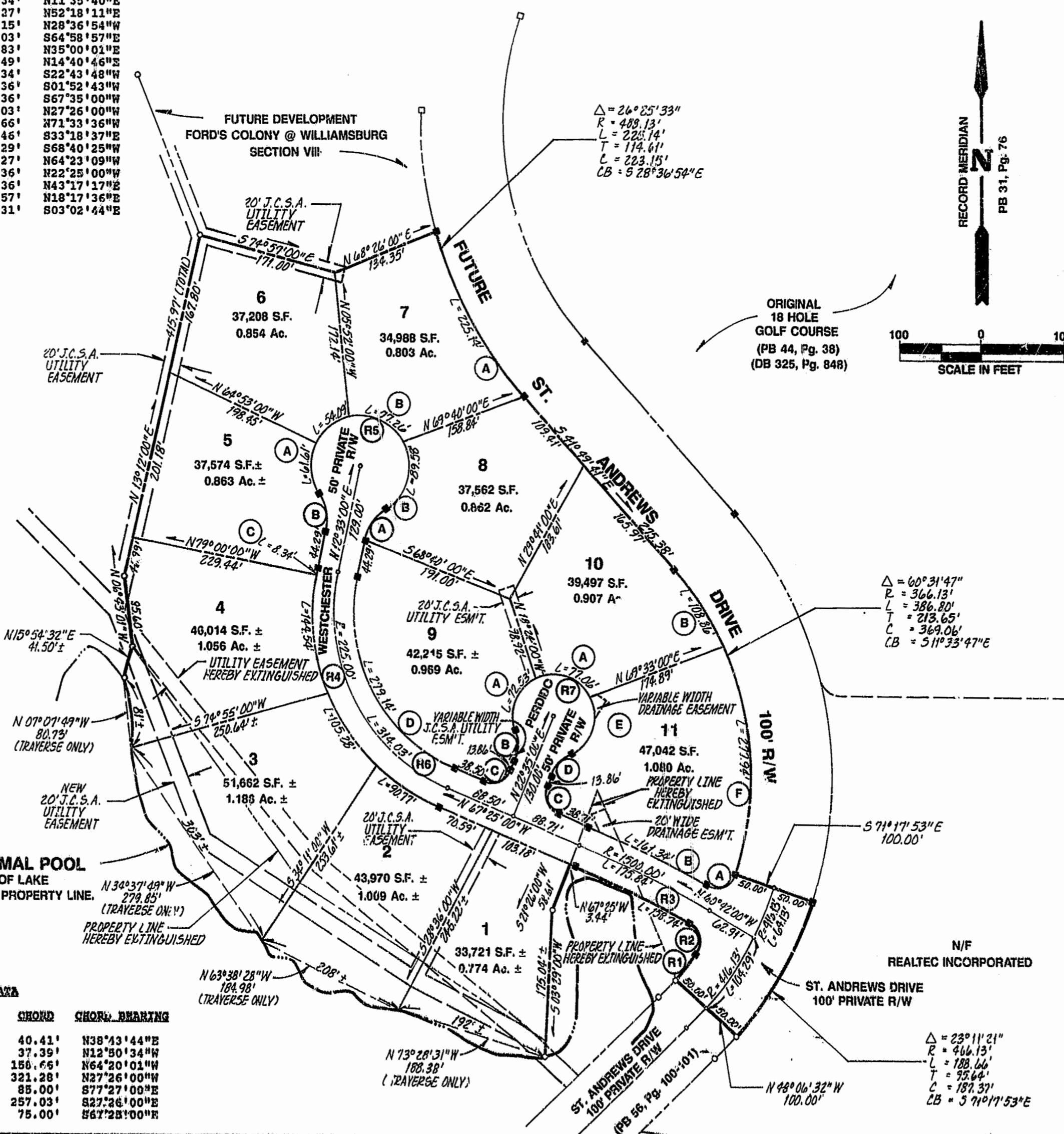


LOT CURVE DATA

LOT NO.	DELTA	RADIUS	LENGTH	TANGENT	CHORD	CHORD BEARING
2	20°46'09"	250.00'	90.77'	45.89'	90.27'	N57°00'56"W
3	24°07'41"	250.00'	150.28'	53.43'	104.50'	N34°33'01"W
4	33°07'30"	250.00'	144.54'	74.35'	142.53'	N05°55'26"W
5A	58°49'47"	60.00'	61.61'	33.83'	58.94'	N02°56'08"W
5B	44°54'02"	60.00'	47.02'	24.79'	45.83'	N09°54'01"W
5C	01°54'41"	250.00'	8.34'	4.17'	8.34'	N11°35'40"E
6	51°38'51"	60.00'	54.09'	29.04'	52.37'	N52°18'11"E
7A	26°25'33"	448.13'	225.14'	114.61'	223.15'	N28°36'54"W
7B	73°46'53"	60.00'	77.26'	45.03'	72.03'	S64°58'57"E
8A	44°54'02"	60.00'	47.02'	24.79'	45.83'	N35°00'01"E
8B	85°32'32"	60.00'	89.58'	55.50'	81.49'	N14°40'46"E
9A	83°06'45"	50.00'	72.53'	44.32'	66.34'	S22°43'48"W
9B	41°24'35"	50.00'	36.14'	18.90'	35.36'	S01°52'43"W
9C	90°00'00"	25.00'	25.00'	39.27'	25.00'	S67°35'00"W
9D	79°58'00"	200.00'	279.14'	167.72'	257.03'	N27°26'00"W
10A	38°18'27"	50.00'	77.06'	48.54'	69.66'	N71°33'36"W
10B	17°02'07"	366.13'	108.86'	54.83'	108.46'	S33°18'37"E
11A	99°56'36"	25.00'	43.61'	29.76'	38.29'	S68°40'25"W
11B	06°03'43"	1525.00'	161.34'	80.75'	161.27'	N64°23'09"W
11C	90°00'00"	25.00'	25.00'	35.36'	25.00'	N22°25'00"W
11D	41°24'35"	50.00'	36.14'	18.90'	35.36'	N43°17'17"E
11E	91°23'57"	50.00'	36.14'	18.90'	35.36'	N18°17'36"E
11F	43°29'40"	366.13'	277.94'	146.05'	271.31'	S03°02'44"E

RIGHT-OF-WAY CURVE DATA

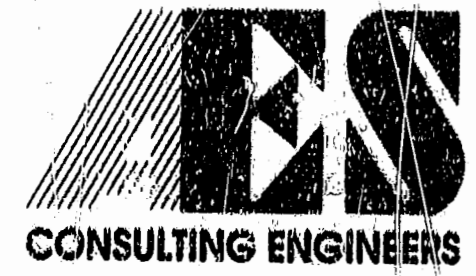
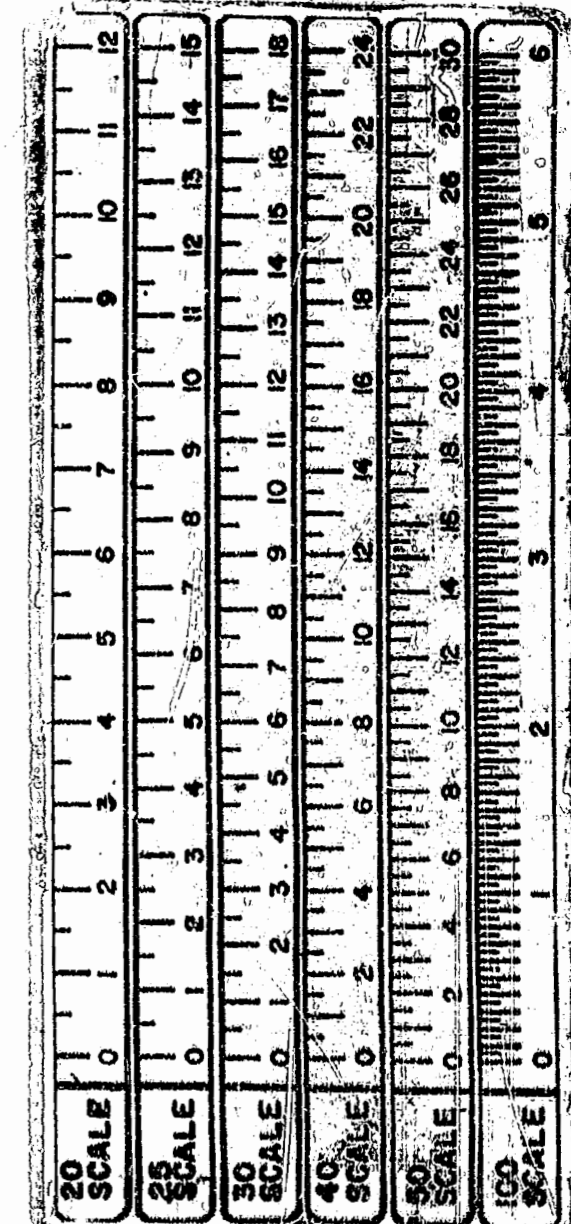
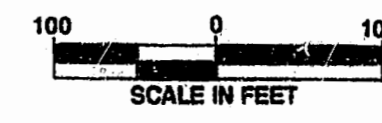
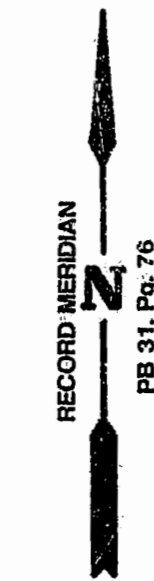
DELTA	RADIUS	LENGTH	TANGENT	CHORD	CHORD BEARING
R1	06°19'35"	366.13'	40.43'	40.41'	N38°43'44"E
R2	96°48'55"	25.00'	42.24'	37.39'	N12°50'34"W
R3	06°09'56"	1475.00'	188.74'	150.66'	N64°20'01"W
R4	79°58'00"	250.00'	348.93'	209.65'	N27°26'00"W
R5	269°48'04"	50.00'	382.54'	85.00'	S77°27'00"E
R6	79°58'00"	200.00'	279.14'	257.03'	S27°26'00"E
R7	262°49'09"	50.00'	229.35'	75.00'	S67°28'00"E



Δ = 26°25'33"  
 R = 488.13'  
 L = 223.14'  
 T = 114.61'  
 C = 223.15'  
 CB = S 28°36'54"E

Δ = 60°31'47"  
 R = 366.13'  
 L = 386.80'  
 T = 213.65'  
 C = 369.06'  
 CB = S 11°33'47"E

Δ = 23°11'21"  
 R = 466.13'  
 L = 188.66'  
 T = 92.64'  
 C = 187.31'  
 CB = S 71°17'53"E



5248 Olde Towne Road, Suite 1  
 Williamsburg, Virginia 23188  
 (804) 253-0040  
 Fax (804) 220-8994

PLAT OF SUBDIVISION  
 AND LOT LINE EXTINGUISHMENT  
**FORD'S COLONY**  
 @ **WILLIAMSBURG**  
 SECTION VIII  
 LOTS 1 - 11  
 POWHATAN DISTRICT JAMES CITY COUNTY VIRGINIA



No.	DATE	REVISION / COMMENT / NOTE	BY

Designed **VMB** Drawn **DEB**  
 Scale 1"=100' Date **FEB. 1995**  
 Project No. **5652**  
 Drawing No. **2 of 2**