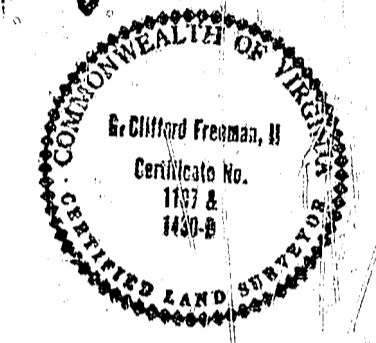


AMENDED BOUNDARY SURVEY OF  
PORTION OF GREEN SPRINGS  
PREPARED FOR  
GREENSPRINGS PLANTATION, INC.  
A VIRGINIA CORPORATION  
JAMES CITY COUNTY, VIRGINIA  
DATE: 2/8/95 SCALE: 1" = 200'  
FREEMAN & ASSOCIATES  
LAND SURVEYORS  
(804) 220-2874  
REF. P.B. 54, PG. 69-76  
SHEET 1 OF 2

SURVEYOR'S CERTIFICATE

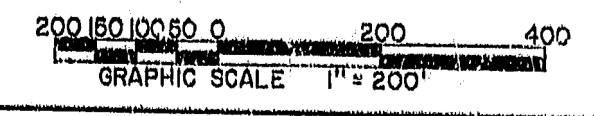
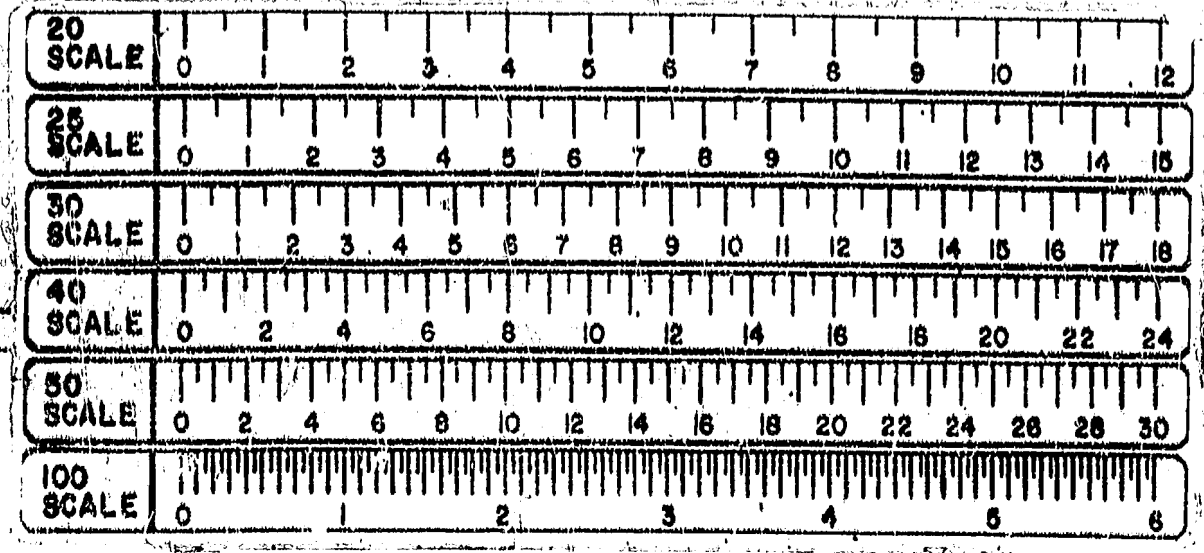
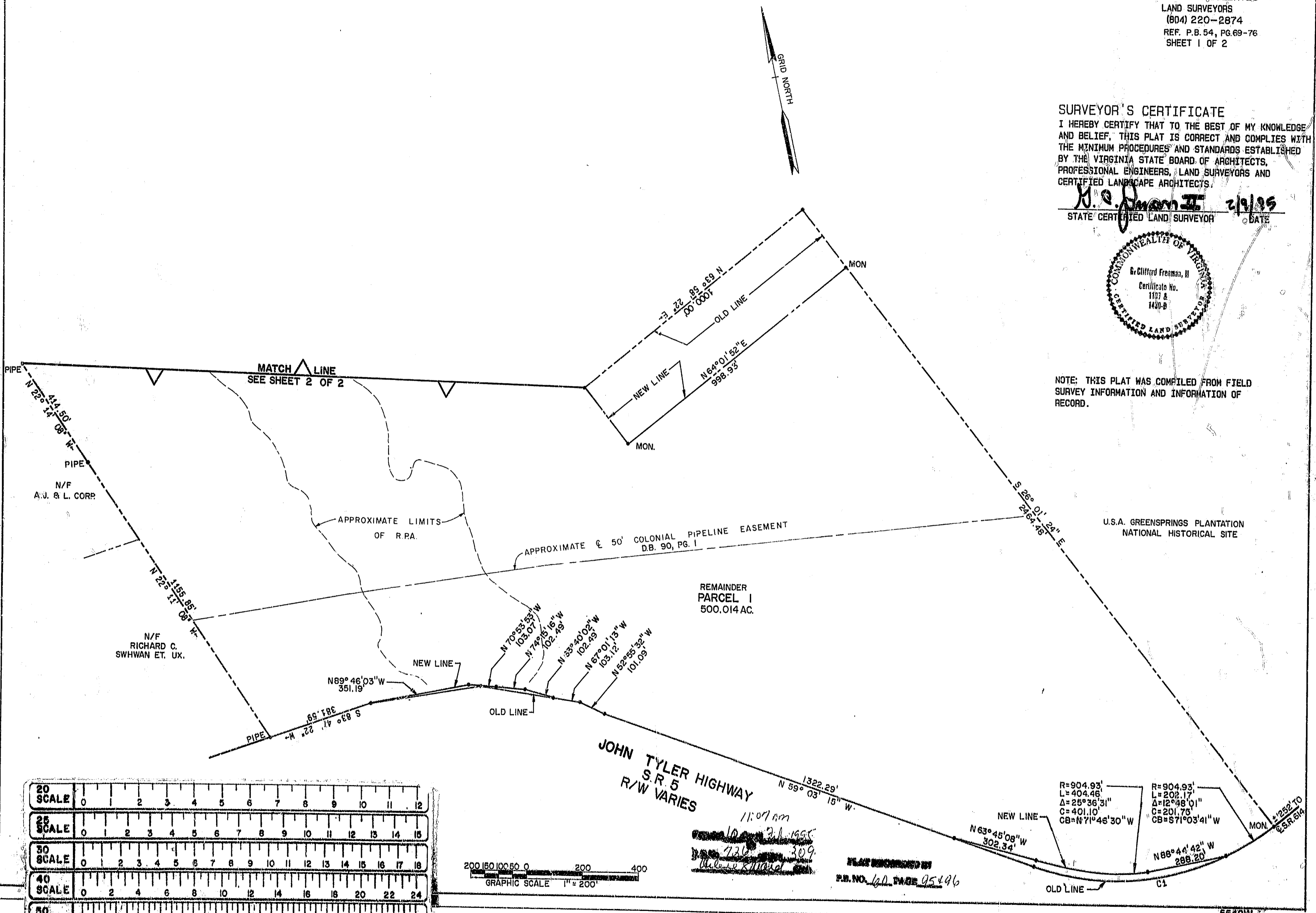
I HEREBY CERTIFY THAT TO THE BEST OF MY KNOWLEDGE AND BELIEF, THIS PLAT IS CORRECT AND COMPLIES WITH THE MINIMUM PROCEDURES AND STANDARDS ESTABLISHED BY THE VIRGINIA STATE BOARD OF ARCHITECTS, PROFESSIONAL ENGINEERS, LAND SURVEYORS AND CERTIFIED LANDSCAPE ARCHITECTS.

*Clifford Freeman, II* 2/9/95  
STATE CERTIFIED LAND SURVEYOR DATE



NOTE: THIS PLAT WAS COMPILED FROM FIELD SURVEY INFORMATION AND INFORMATION OF RECORD.

U.S.A. GREENSPRINGS PLANTATION  
NATIONAL HISTORICAL SITE



11:07 AM  
10-21-1995  
736 309  
*Clifford Freeman, II*

PLAT RECORDED BY  
P.B. NO. 60 PAGE 95 & 96

