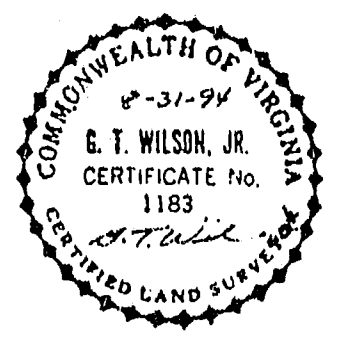
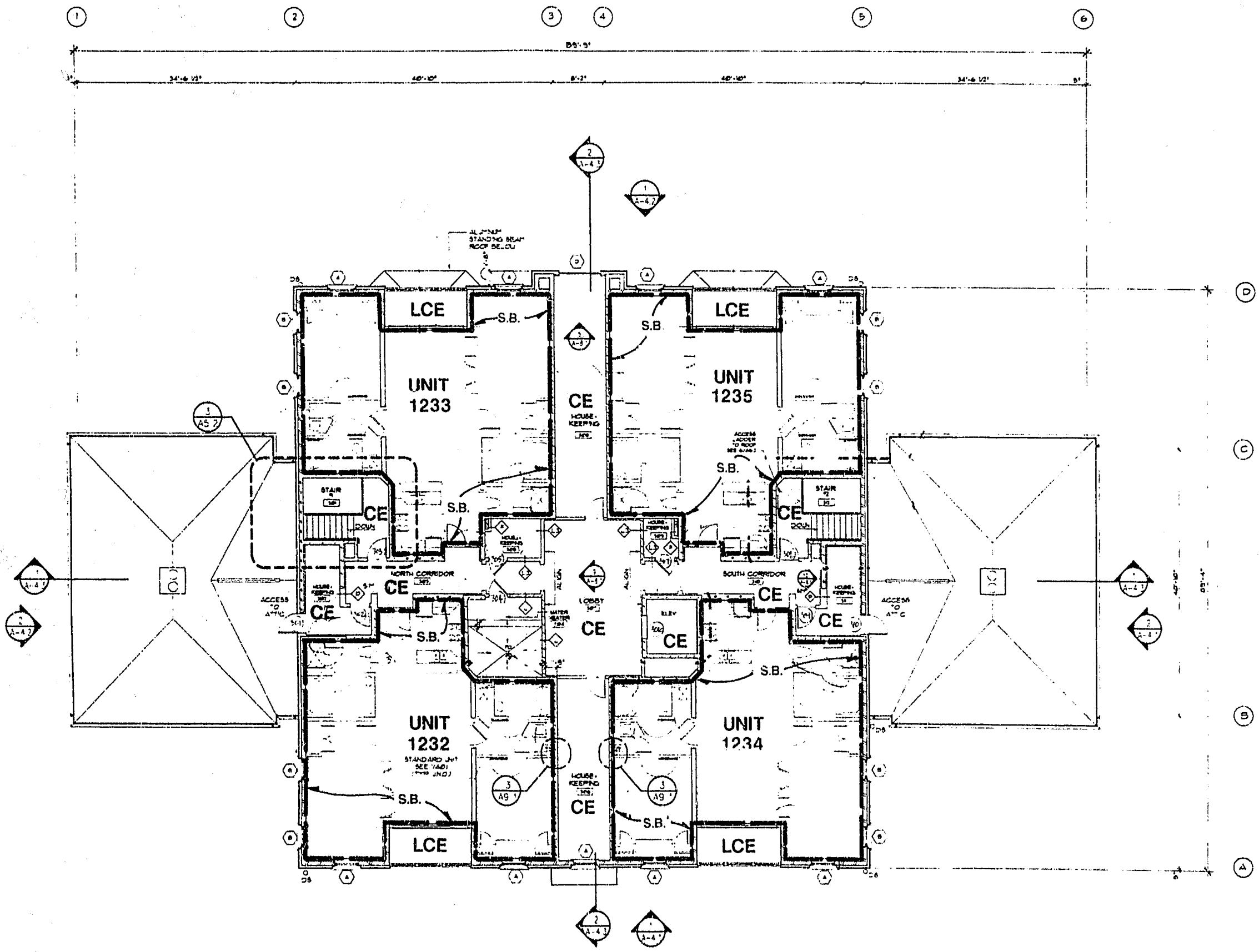


UNIT	LOWER BOUNDARY ELEVATION*	UPPER BOUNDARY ELEVATION*
1232	107.29	117.03
1233	107.29	117.03
1234	107.29	117.03
1235	107.29	117.03

* NOTE.
 THE NUMERICAL VALUE GIVEN AS THE LOWER BOUNDARY OF EACH UNIT IS THE ELEVATION OF THE HORIZONTAL PLANE OF THE UPPER SURFACE OF THE GYPSUM-CONCRETE FLOOR (TOPPING OF THE UNIT)
 THE NUMERICAL VALUE GIVEN AS THE UPPER BOUNDARY OF EACH UNIT IS THE ELEVATION OF THE HORIZONTAL PLANE(S) OF THE UPPER (COVERED) SURFACE OF THE GYPSUM BOARD (OR OTHER MATERIAL) CONSTITUTING THE EXPOSED CEILING OF THE UNIT



SURVEYOR'S CERTIFICATE
 I CERTIFY THAT TO THE BEST OF MY KNOWLEDGE AND BELIEF THESE PLANS ARE ACCURATE AND IN COMPLIANCE WITH VIRGINIA CODE ANN. SUBSECTIONS 55-79.58 B AND E AND THAT THE UNITS DEPICTED HEREON HAVE BEEN SUBSTANTIALLY COMPLETED.
 G. T. WILSON, JR., C.L.S. P-31-94
 DATE

NOTE: SEE SHEETS 8 AND 9 FOR ACTUAL FIELD DIMENSIONS.

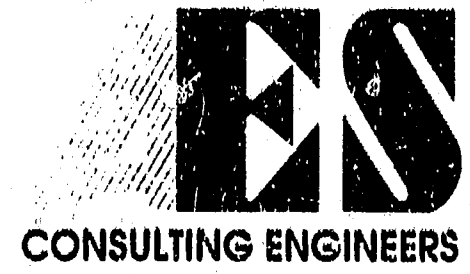
THIRD LEVEL FLOOR PLAN
 UNITS 1232 THRU 1235

LEGEND:
 S.B. - SIDE (PERIMETRIC) BOUNDARY
 C.E. - COMMON ELEMENT
 L.C.E. - LIMITED COMMON ELEMENT

EXHIBIT A-3

**PLAT OF CONDOMINIUM,
 MANOR CLUB AT FORD'S COLONY,
 A CONDOMINIUM, PHASE II**
 OWNER/DEVELOPER: MARRIOTT OWNERSHIP RESORTS, INC.
 POWHATAN DISTRICT JAMES CITY COUNTY VIRGINIA

5248 Olde Towne Road, Suite 1
 Williamsburg, Virginia 23188
 (804) 253-0040
 Fax (804) 220-8994



No.	DATE	REVISION / COMMENT / NOTE	BY

Designed	Drawn
Scale	Date
Project No.	7739-CB
Drawing No.	4 OF 10