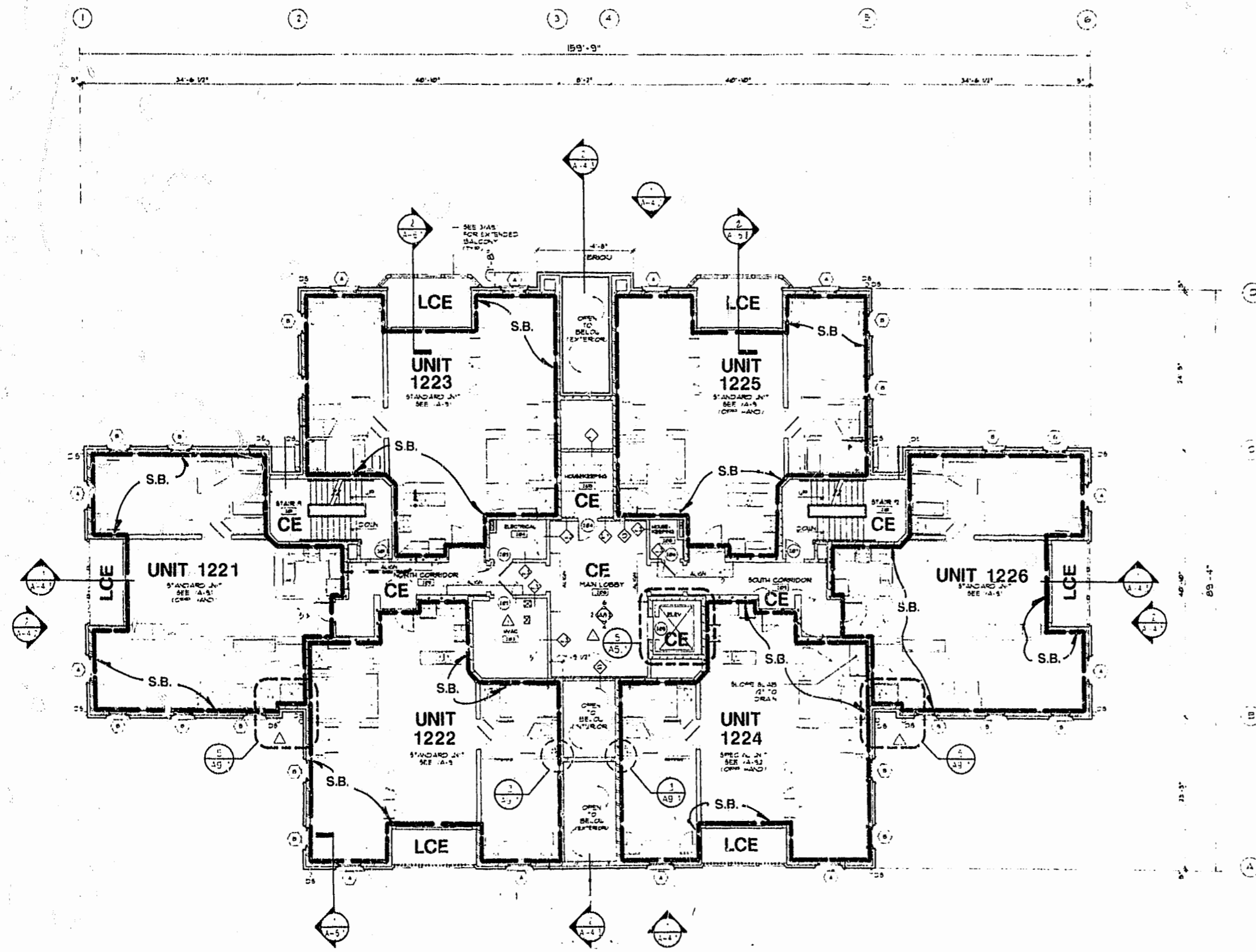


UNIT	LOWER BOUNDARY ELEVATION*	UPPER BOUNDARY ELEVATION*
1221	96.79	106.51
1222	96.79	106.51
1223	96.79	106.51
1224	96.79	106.51
1225	96.79	106.51
1226	96.79	106.51

\* NOTE:

THE NUMERICAL VALUE GIVEN AS THE LOWER BOUNDARY OF EACH UNIT IS THE ELEVATION OF THE HORIZONTAL PLANE OF THE UPPER SURFACE OF THE GYPSUM-CONCRETE FLOOR TOPPING OF THE UNIT.

THE NUMERICAL VALUE GIVEN AS THE UPPER BOUNDARY OF EACH UNIT IS THE ELEVATION OF THE HORIZONTAL PLANE(S) OF THE UPPER (COVERED) SURFACE OF THE GYPSUM BOARD (OR OTHER MATERIAL) CONSTITUTING THE EXPOSED CEILING OF THE UNIT.



SURVEYOR'S CERTIFICATE

I CERTIFY THAT TO THE BEST OF MY KNOWLEDGE AND BELIEF THESE PLANS ARE ACCURATE AND IN COMPLIANCE WITH VIRGINIA CODE ANN. SUBSECTIONS 55-79.58 B AND E AND THAT THE UNITS DEPICTED HEREON HAVE BEEN SUBSTANTIALLY COMPLETED.

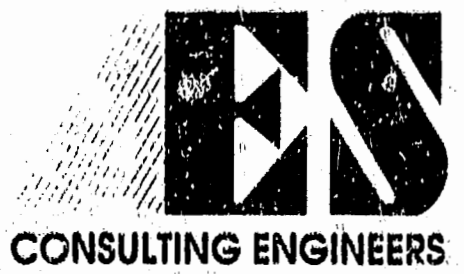
*G. T. Wilson, Jr.*  
 G. T. WILSON, JR., C.L.S.      8-31-94  
 DATE

NOTE: SEE SHEETS 8 AND 9 FOR ACTUAL FIELD DIMENSIONS.

SECOND LEVEL FLOOR PLAN  
 UNITS 1221 THRU 1226

LEGEND:  
 S.B. - SIDE (PERIMETRIC) BOUNDARY  
 C.E. - COMMON ELEMENT  
 L.C.E. - LIMITED COMMON ELEMENT

NOTE:  
 SEE SHEETS 8 AND 9 FOR ACTUAL FIELD DIMENSIONS AND NOTES ON THESE UNITS.



5248 Olde Towne Road, Suite 1  
 Williamsburg, Virginia 23188  
 (804) 253-0040  
 Fax (804) 220-8994

**EXHIBIT A-3**

**PLAT OF CONDOMINIUM,  
 MANOR CLUB AT FORD'S COLONY,  
 A CONDOMINIUM, PHASE II**

OWNER/DEVELOPER: MARRIOTT OWNERSHIP RESORTS, INC  
 POWHATAN DISTRICT      JAMES CITY COUNTY      VIRGINIA

Recorded <u>4/11</u> day of <u>Nov</u> 1994	Designed <u>CMA</u>
D.B. No. <u>713</u> pages <u>583</u>	Drawn <u>CMA</u>
<u>William Skilled</u> Clerk	Scale <u>NONE</u>
	Date <u>JULY, 1994</u>
	Project No. <u>7739-CB</u>
	Drawing No. <u>3 OF 10</u>
No. DATE	REVISION COMMENT NOTE
	BY