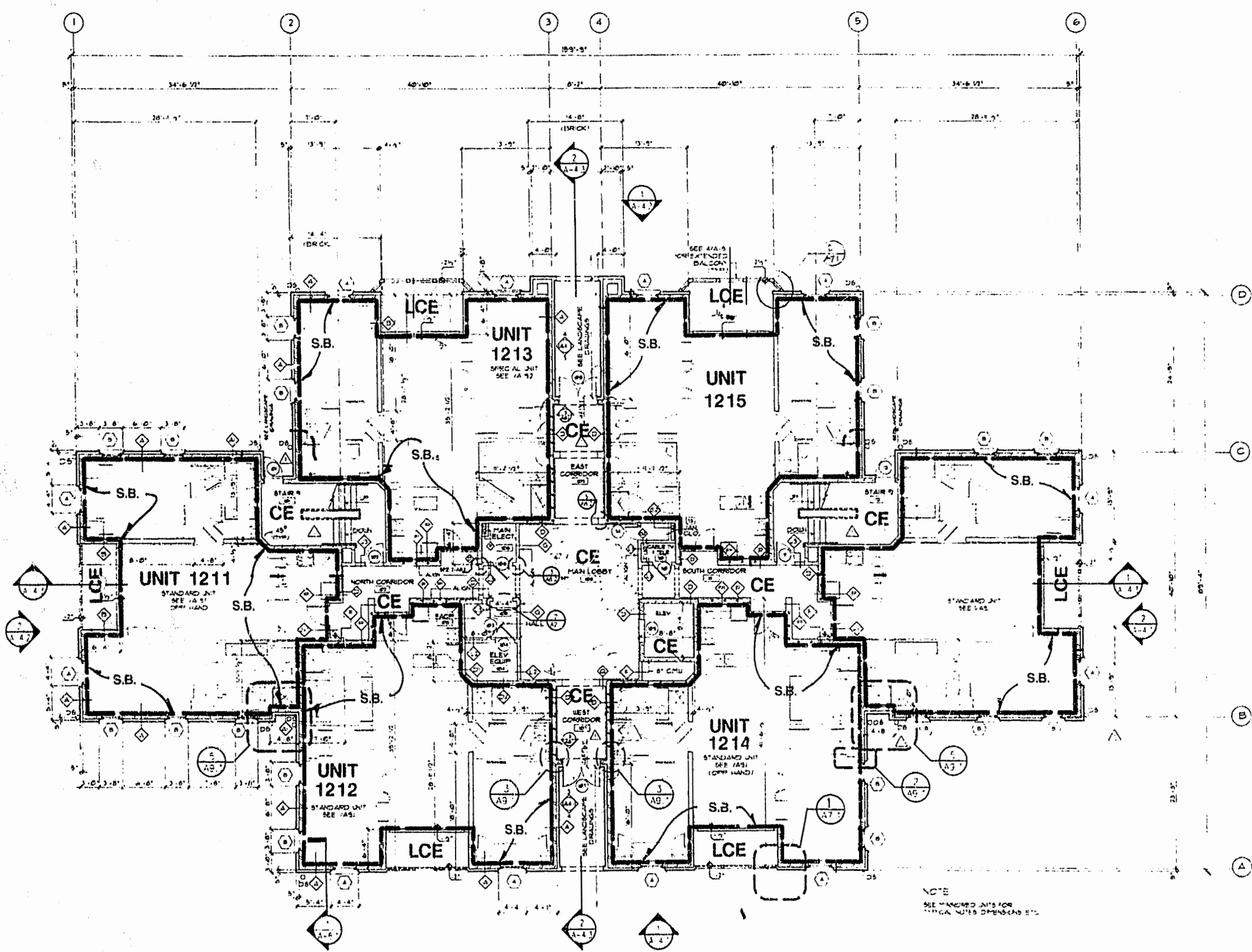


UNIT	LOWER BOUNDARY ELEVATION*	UPPER BOUNDARY ELEVATION*
1211	86.11	95.88
1212	86.11	95.88
1213	86.11	95.88
1214	86.11	95.88
1215	86.11	95.88
1216	86.11	95.88

\* NOTE:  
 THE NUMERICAL VALUE GIVEN AS THE LOWER BOUNDARY OF EACH UNIT IS THE ELEVATION OF THE HORIZONTAL PLANE OF THE UPPER SURFACE OF THE GYPSUM-CONCRETE FLOOR TOPPING OF THE UNIT.  
 THE NUMERICAL VALUE GIVEN AS THE UPPER BOUNDARY OF EACH UNIT IS THE ELEVATION OF THE HORIZONTAL PLANE(S) OF THE UPPER (COVERED) SURFACE OF THE GYPSUM BOARD (OR OTHER MATERIAL) CONSTITUTING THE EXPOSED CEILING OF THE UNIT.



SURVEYOR'S CERTIFICATE

I CERTIFY THAT TO THE BEST OF MY KNOWLEDGE AND BELIEF THESE PLANS ARE ACCURATE AND IN COMPLIANCE WITH VIRGINIA CODE ANN. SUBSECTIONS 55-79.58 B AND E AND THAT THE UNITS DEPICTED HEREON HAVE BEEN SUBSTANTIALLY COMPLETED.

G. T. WILSON, JR., C.L.S.      8-31-94  
 DATE

NOTE: SEE SHEETS 8 AND 9 FOR ACTUAL FIELD DIMENSIONS.

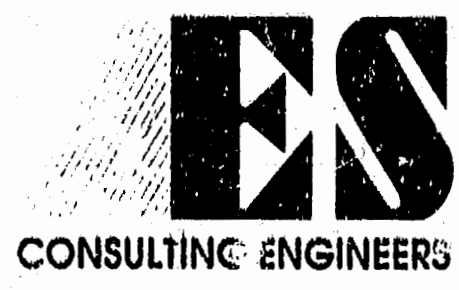
FIRST LEVEL FLOOR PLAN  
 UNITS 1211 THRU 1216

LEGEND:  
 S.B. - SIDE (PERIMETRIC) BOUNDARY  
 C.E. - COMMON ELEMENT  
 L.C.E. - LIMITED COMMON ELEMENT

EXHIBIT A-3

**PLAT OF CONDOMINIUM,  
 MANOR CLUB AT FORD'S COLONY,  
 A CONDOMINIUM, PHASE II**

OWNER/DEVELOPER: MARRIOTT OWNERSHIP RESORTS, INC.  
 POWHATAN DISTRICT      JAMES CITY COUNTY      VIRGINIA



5248 Olde Towne Road, Suite 1  
 Williamsburg, Virginia 23188  
 (804) 253-0040  
 Fax (804) 220-8994

Recorded	424	day of	Nov.	1994
D.B. No.	713	pages	583	
By: <i>Richard S. ...</i> Clerk				
No.	DATE	REVISION	COMMENT / NOTE	BY

Designed	Drawn
Scale	Date
Project No.	
Drawing No.	
<b>2 OF 10</b>	