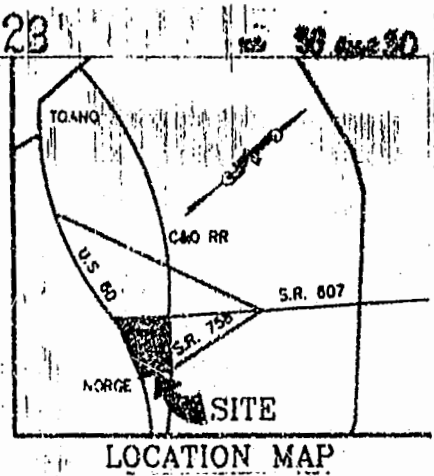


DOMINION BANK, A VIRGINIA CORPORATION
 THIS SUBDIVISION IS WITH THE PRIOR CONSENT AND IN ACCORDANCE WITH THE TERMS AND CONCEPTS OF THE UNDERGROUND OWNERS AND PROPRIETORS

DOMINION BANK, A VIRGINIA CORPORATION
 NAME: *Robert L. Stuber*
 TITLE: *VICE PRESIDENT*

DOMINION BANK, A VIRGINIA CORPORATION
 THIS SUBDIVISION IS WITH THE PRIOR CONSENT AND IN ACCORDANCE WITH THE TERMS AND CONCEPTS OF THE UNDERGROUND TRUSTEES

DOMINION BANK, A VIRGINIA CORPORATION
 NAME: *Robert L. Stuber*
 TITLE: *VICE PRESIDENT*



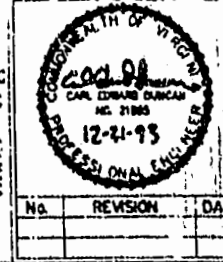
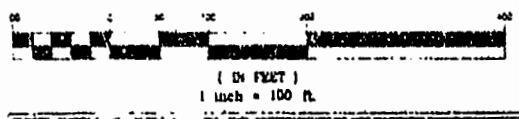
STATE OF VIRGINIA
 I, *Robert L. Stuber*, A NOTARY PUBLIC DO CERTIFY THAT THE PERSONS WHOSE NAMES ARE BOARED TO THE RECORDS HEREIN HAVE ACKNOWLEDGED THE SAME BEFORE ME IN MY CITY AND STATE JURISDICTION
 GIVEN UNDER MY HAND THIS 17 DAY OF February 1994
 BY COMMISSION EXPIRES July 31, 1995
 BY *Robert L. Stuber*

CURRICY CERTIFICATE
 STATE OF VIRGINIA, COUNTY OF JAMES CITY
 IN THE CLERK'S OFFICE OF THE CIRCUIT COURT FOR THE COUNTY OF JAMES CITY THIS 5 DAY OF May 1994 THIS MAP WAS PRESENTED AND ADMITTED TO THE RECORDS AS THE LAW DIRECTS.
 TESTER: _____ CLERK
 PLAT BOOK: 59 PAGE: 30

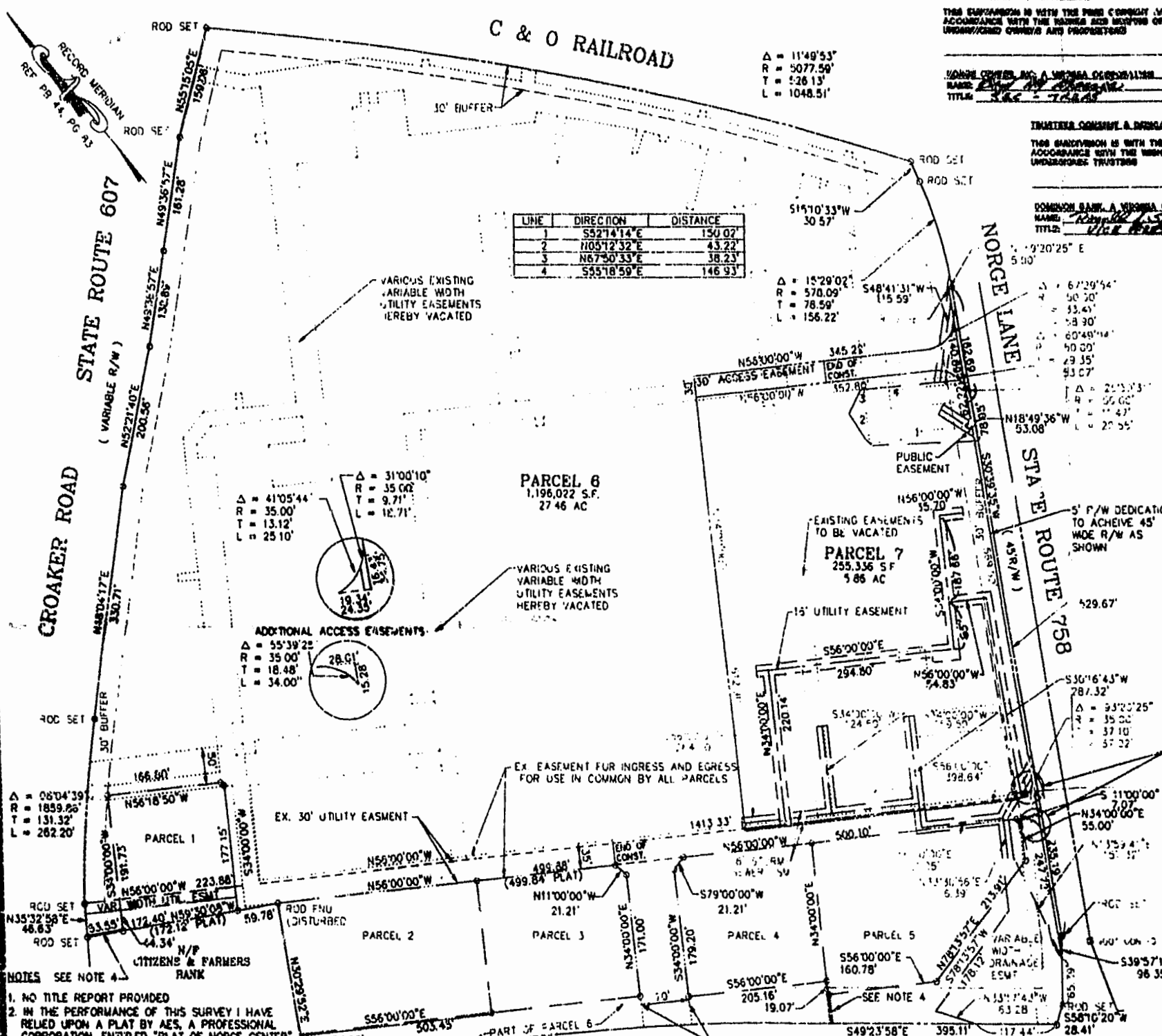
CERTIFICATE OF APPROVAL
 THIS SUBDIVISION SHOWN AS PARCEL 6, NORGE REGIONAL CENTER IS APPROVED BY THE UNDERGROUND IN ACCORDANCE WITH EIGHTH SURVEYOR REGULATIONS AND MAY BE COMMITTED TO RECORD
 DATE: 2/24/94 *Robert L. Stuber* SURVEYOR ENGINEER

AGENT OF GOV. RANGING BODY
 I HEREBY CERTIFY THAT TO THE BEST OF MY KNOWLEDGE AND BELIEF, ALL OF THE REQUIREMENTS OF THE BOARD OF SURVEYORS AND COMMISSIONERS OF THE COUNTY OF JAMES CITY, VIRGINIA, REGARDING THE MATTER OF EASEMENTS WITHIN THE COUNTY HAVE BEEN COMPLIED WITH
 GIVEN UNDER MY HAND THIS 21 DAY OF December 1993
 BY *Carl E. Duncan*
 CARL E. DUNCAN, P.E.

SEE BLOW-UP FOR THIS AREA
 ADDITIONAL ACCESS EASEMENTS A CORRECTED PLAT SHOWING
A SUBDIVISION OF PARCEL 6
 &
VARIOUS EASEMENTS
 OF THE PROPERTY OF
NORGE CENTER, INC.
 DEED BOOK 333 PAGE 75
 DEED BOOK 330 PAGE 494
 SCALE: 1"=100' DATE: APRIL 9, 1993
 1 OF 1
 GRAPHIC SCALE



Baker
 Ratchford Bldg., Suite 212
 1602 Rolling Hills Road
 Richmond, Virginia 23228
 (804) 282-1821 Fax: (804) 282-0530



LINE	DIRECTION	DISTANCE
1	S52°14'14" E	150.02'
2	N05°12'32" E	43.22'
3	N67°50'33" E	38.23'
4	S55°18'59" E	146.93'

PARCEL 6
 1,198,022 S.F.
 27.46 AC

PARCEL 7
 255,336 S.F.
 5.86 AC

- NOTES SEE NOTE 4
- NO TITLE REPORT PROVIDED
 - IN THE PERFORMANCE OF THIS SURVEY I HAVE RELIED UPON A PLAT BY AES, A PROFESSIONAL CORPORATION, ENTITLED "PLAT OF NORGE CENTER" DATED JUNE, 1988, AND RECORDED IN THE CLERK'S OFFICE OF THE CIRCUIT COURT AND CERTAIN PLANS AND DOCUMENTS BY VOOT.
 - ALL PARCELS ARE SERVED BY PUBLIC WATER & SEWER ROD AND SYSTEMS
 - 1' WIDE FEE SIMPLE STRIP EXTENDED TO VOOT R/W SEE PLAT FOR NORGE REGIONAL CENTER BY AES
 - UTILITY EASEMENTS CREATED UNDER "PLAT OF NORGE CENTER" DATED JUNE 1988 BY AES, A PROFESSIONAL CORPORATION, AS INDICATED ON THIS PLAT ARE HEREBY VACATED.
 - THIS PROPERTY IS ENCUMBERED BY A DEED OF TRUST TO DOMINION BANK A VIRGINIA CORPORATION, AS RECORDED IN DB 333, PG 77. ALSO ENCUMBERED BY A LOAN MODIFICATION RECORDED IN DB 588 PG 405

RICHMOND ROAD (VARIABLE R/W) U.S. 60 LAND BALANCE

SOURCE OF TITLE

	ACRES
A. PRIOR TO SUBDIVISION PARCEL 6	33.32 AC
TOTAL	33.32 AC
B. AFTER SUBDIVISION	
PARCEL 7	5.80 AC
R/W DEDICATION	0.96 AC
PARCEL 6	27.42 AC
R/W DEDICATION	0.94 AC
TOTAL	33.32 AC

1:40 p.m.
 Recorded 15th day of Nov. 1994
 D.B. No. 713 pages 115
Delores Steward Clerk

