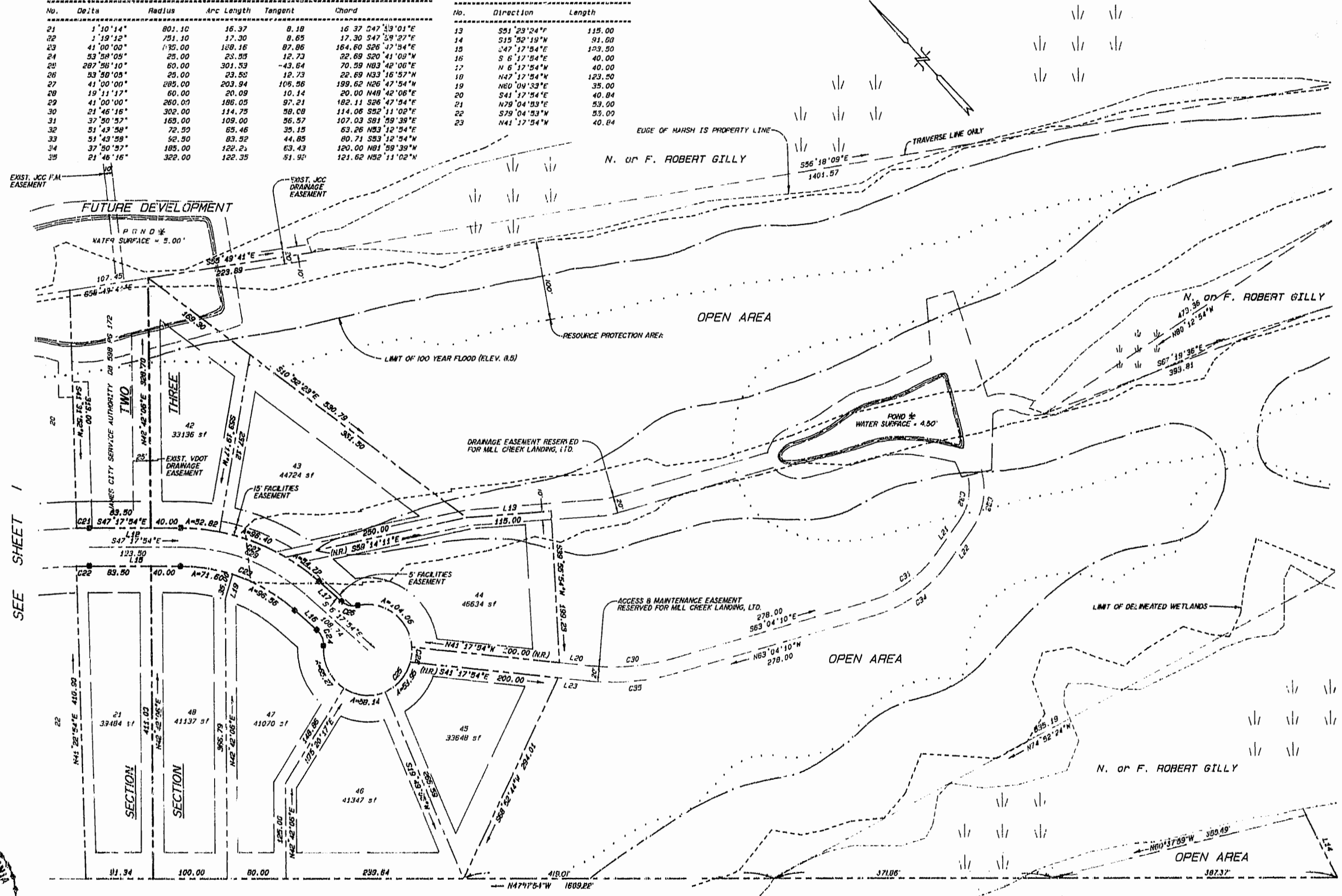


# PELEG'S POINT

SECTIONS TWO & THREE  
 JAMESTOWN DISTRICT  
 JAMES CITY COUNTY, VIRGINIA  
 C. K. TUDOR ENGINEERS, INC.  
 11524 JEFFERSON AVENUE  
 NEWPORT NEWS, VIRGINIA

SCALE: 1"=100'      JUNE 6, 1994  
 SHEET 2 OF 3

No.	Bearing	Radius	Arc Length	Tangent	Chord	No.	Direction	Length
21	1°10'14"	801.10	16.37	8.18	16.37 S47°13'01"E	13	S31°23'24"W	115.00
22	1°19'12"	751.10	17.30	8.65	17.30 S47°39'27"E	14	S15°02'19"W	91.00
23	41°00'00"	170.00	18.16	87.86	184.60 S26°47'54"E	15	S47°17'54"E	129.50
24	53°58'05"	25.00	23.55	12.73	22.69 S20°41'09"W	16	S 6°12'54"E	40.00
25	287°58'10"	60.00	301.53	-43.64	70.59 N83°42'06"E	17	N 6°12'54"W	40.00
26	53°58'05"	25.00	23.55	12.73	22.69 N33°16'57"N	18	N47°17'54"W	123.50
27	41°00'00"	285.00	203.94	106.56	199.62 N26°47'54"W	19	N60°04'33"E	35.00
28	19°11'17"	60.00	20.09	10.14	20.00 N48°42'06"E	20	S41°17'54"E	40.84
29	41°00'00"	260.00	186.05	97.21	182.11 S26°47'54"E	21	N78°04'53"E	53.00
30	21°46'16"	302.00	114.75	58.08	114.06 S52°11'02"E	22	S78°04'53"W	53.00
31	37°50'57"	163.00	109.00	56.57	107.03 S81°39'39"E	23	N41°17'54"W	40.84
32	51°43'58"	72.50	65.46	35.15	63.26 N33°12'54"E			
33	51°43'58"	52.50	83.92	44.85	80.71 S33°12'54"W			
34	37°50'57"	185.00	122.23	63.43	120.00 N81°39'39"W			
35	21°46'16"	322.00	122.35	51.92	121.62 N52°11'02"W			



SEE SHEET 1

SEE SHEET 3



PAGE LANDING AT JAMESTOWN DB 50 PG 95

11:29 Am  
 Recorded 10/10/94  
 D. C. MILLER  
 709