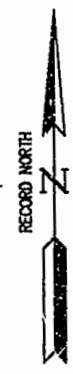
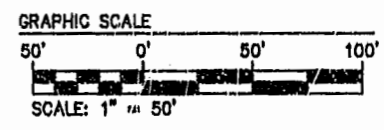
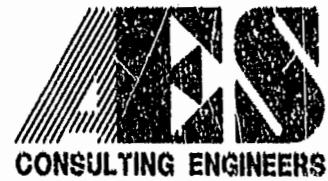
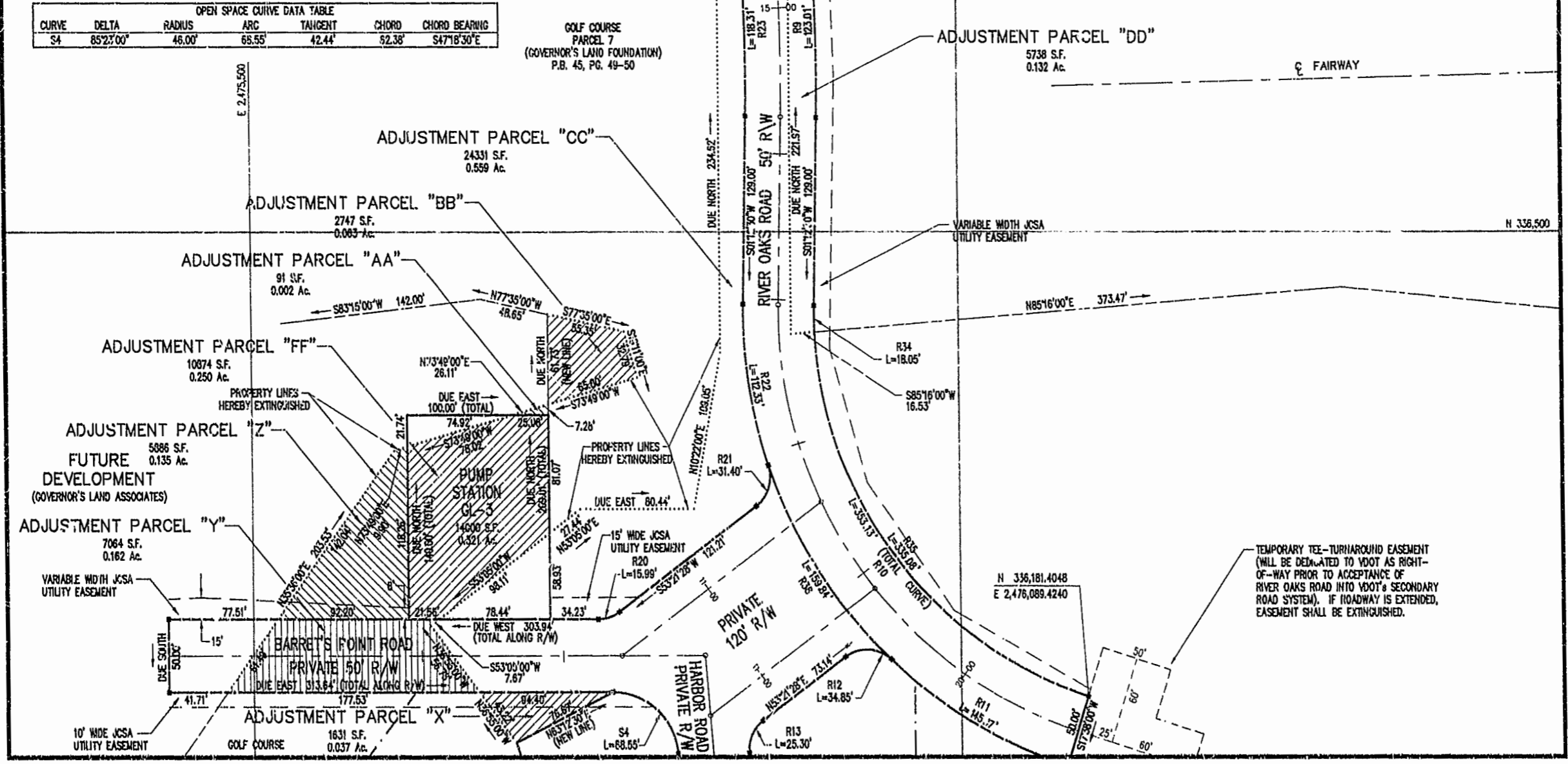


RIGHT-OF-WAY CURVE DATA TABLE						
CURVE	DELTA	RADIUS	ARC	TANGENT	CHORD	CHORD BEARING
R7	00°55'18"	3655.76'	58.78'	29.38'	58.78'	S03°02'05"W
R9	05°22'50"	1309.91'	123.01'	61.55'	122.86'	S01°28'55"E
R10	73°34'30"	275.00'	353.13'	205.83'	329.37'	S35°34'45"E
R11	25°35'32"	325.00'	145.17'	73.81'	143.96'	N59°34'14"W
R12	79°52'04"	25.00'	31.89'	20.83'	32.10'	N86°42'30"W
R13	57°56'28"	25.00'	25.30'	13.85'	24.23'	S24°22'14"W
R20	36°38'32"	25.00'	15.99'	8.28'	15.72'	S71°40'44"W
R21	71°57'12"	25.00'	31.40'	18.15'	29.37'	S17°22'52"W
R22	19°48'14"	325.00'	112.33'	56.73'	111.77'	S08°41'37"E
R23	05°22'50"	1259.01'	118.31'	59.20'	118.27'	S01°28'55"E
R24	07°40'02"	925.96'	123.91'	62.03'	123.82'	S00°20'18"E
R25	00°55'16"	3605.76'	57.97'	28.99'	57.97'	S03°02'05"W
R32	04°57'28"	875.99'	75.99'	37.92'	75.77'	S01°59'00"W
R33	02°42'34"	875.96'	41.42'	20.72'	41.42'	S02°49'03"E
R34	03°45'41"	275.00'	18.04'	9.03'	18.05'	S00°40'20"E
R35	69°48'49"	275.00'	350.03'	191.89'	314.73'	S37°27'35"E
R36	14°12'57"	350.00'	86.84'	43.64'	86.62'	N07°36'28"W
R37	43°18'00"	300.00'	226.72'	119.08'	221.35'	N21°39'00"W

OPEN SPACE CURVE DATA TABLE				
CURVE	DELTA	RADIUS	ARC	CHORD
S4	85°27'00"	46.00'	68.55'	92.38'



PLOTTED 7/29/94



5248 Olde Towne Road, Suite 1
Williamsburg, Virginia 23188
(804) 253-0040
Fax (804) 220-8994

PLAT OF
THE HARBOR AT TWO RIVERS
THE
GOVERNOR'S LAND
AT
TWO RIVERS
JAMES CITY COUNTY
VIRGINIA



No.	DATE	REVISION / COMMENT / NOTE	BY

Designed VMB	Drawn BUJ
Scale 1"=50'	Date JULY 1994
Project No. 7173	
Drawing No. Sht. 6 of 8	

FILE #717341P6.DWG

