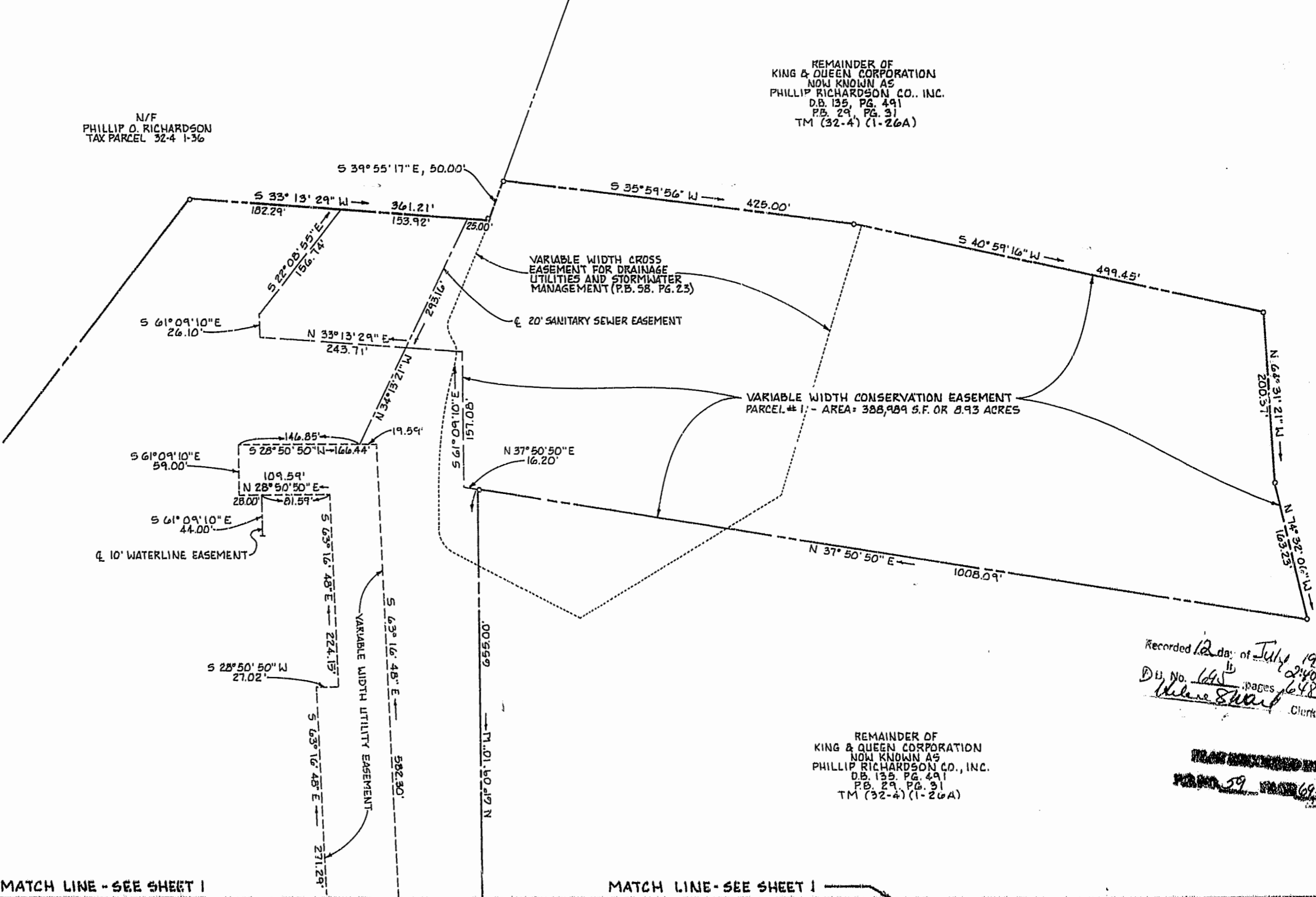


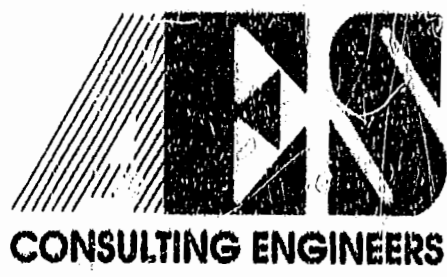
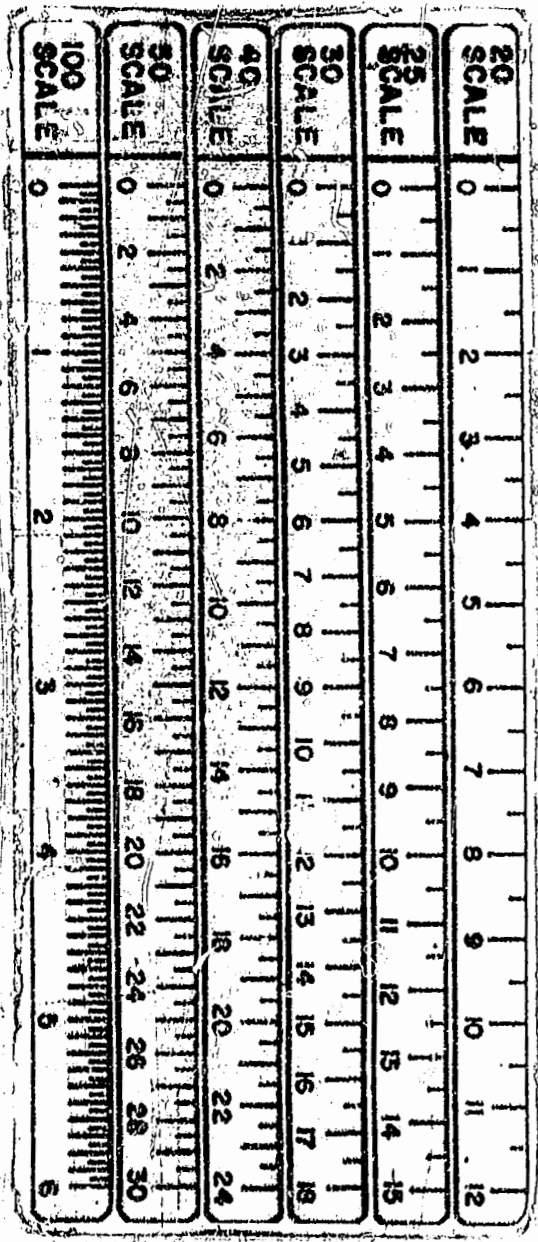
N/F  
PHILLIP O. RICHARDSON  
TAX PARCEL 32-4 1-36

REMAINDER OF  
KING & QUEEN CORPORATION  
NOW KNOWN AS  
PHILLIP RICHARDSON CO., INC.  
D.B. 135, PG. 491  
P.B. 29, PG. 31  
TM (32-4) (1-26A)



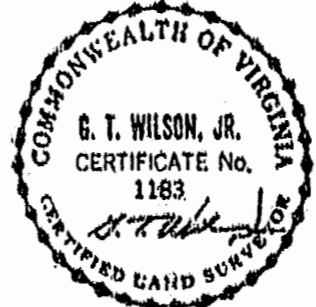
Recorded 12 days of July 1994  
D.B. No. 645, pages 648  
Walter Shaw, Clerk

REMAINDER OF  
KING & QUEEN CORPORATION  
NOW KNOWN AS  
PHILLIP RICHARDSON CO., INC.  
D.B. 135, PG. 491  
P.B. 29, PG. 31  
TM (32-4) (1-26A)



5248 Olde Towne Road, Suite 1  
Williamsburg, Virginia 23188  
(804) 253-0040  
Fax (804) 220-8994

PLAT SHOWING UTILITY, SCENIC,  
AND CONSERVATION EASEMENTS  
WILLIAMSBURG PLANTATION, PHASE 1  
OWNER: WILLIAMSBURG PLANTATION, INC.  
BERKELEY DISTRICT JAMES CITY COUNTY VIRGINIA



No.	DATE	REVISION / COMMENT / NOTE	BY
1	5-26-94	REVISIONS PER J.C.C. COMMENTS	EMG

Designed EMG	Drawn CLJ
Scale 1"=100'	Date 10/14/94
Project No. 7555	
Drawing No. 2 OF 2	