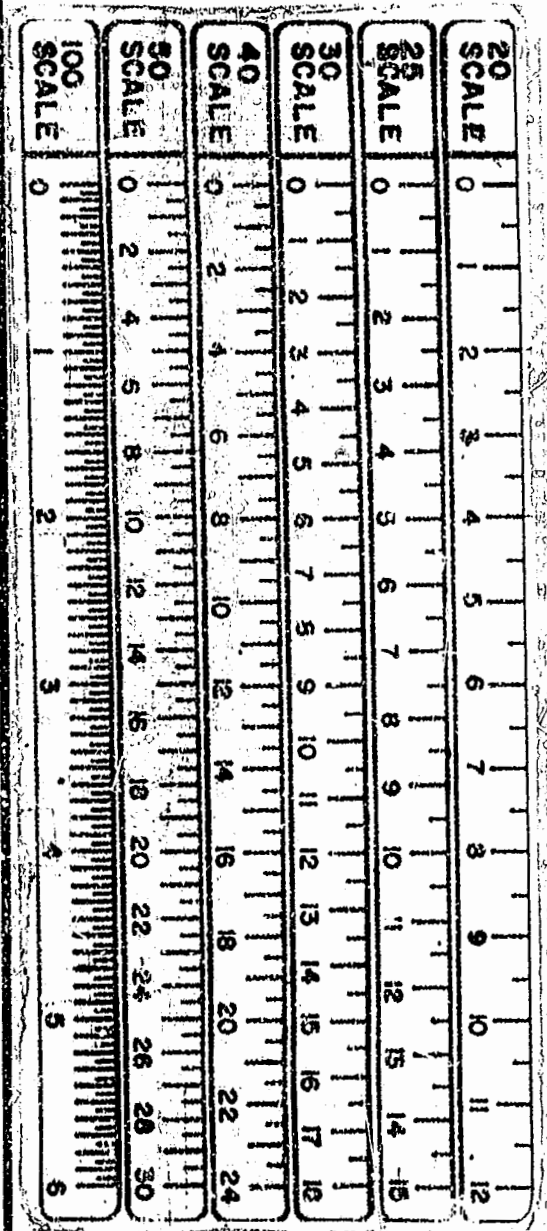


CERTIFICATE OF SOURCE OF TITLE

THE PROPERTY SHOWN ON THIS PLAT WAS CONVEYED BY _____ TO _____ DATED _____ AND RECORDED IN THE OFFICE OF THE CLERK OF THE CIRCUIT COURT OF THE COUNTY OF JAMES CITY IN DEED BOOK _____, PAGE _____.



CLERK'S CERTIFICATE
STATE OF VIRGINIA, COUNTY OF JAMES CITY

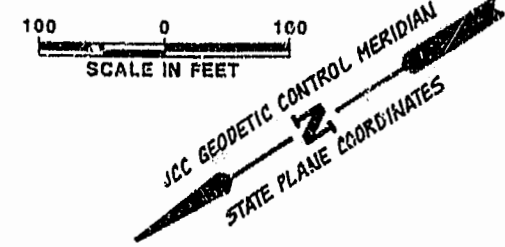
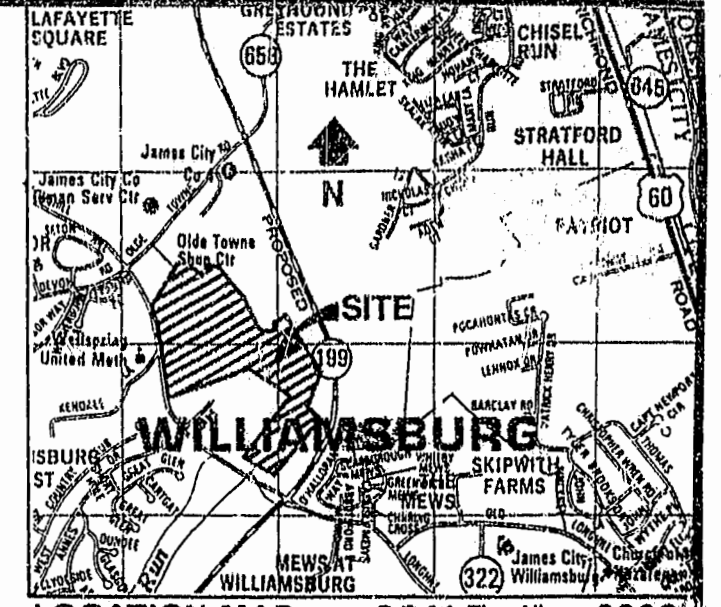
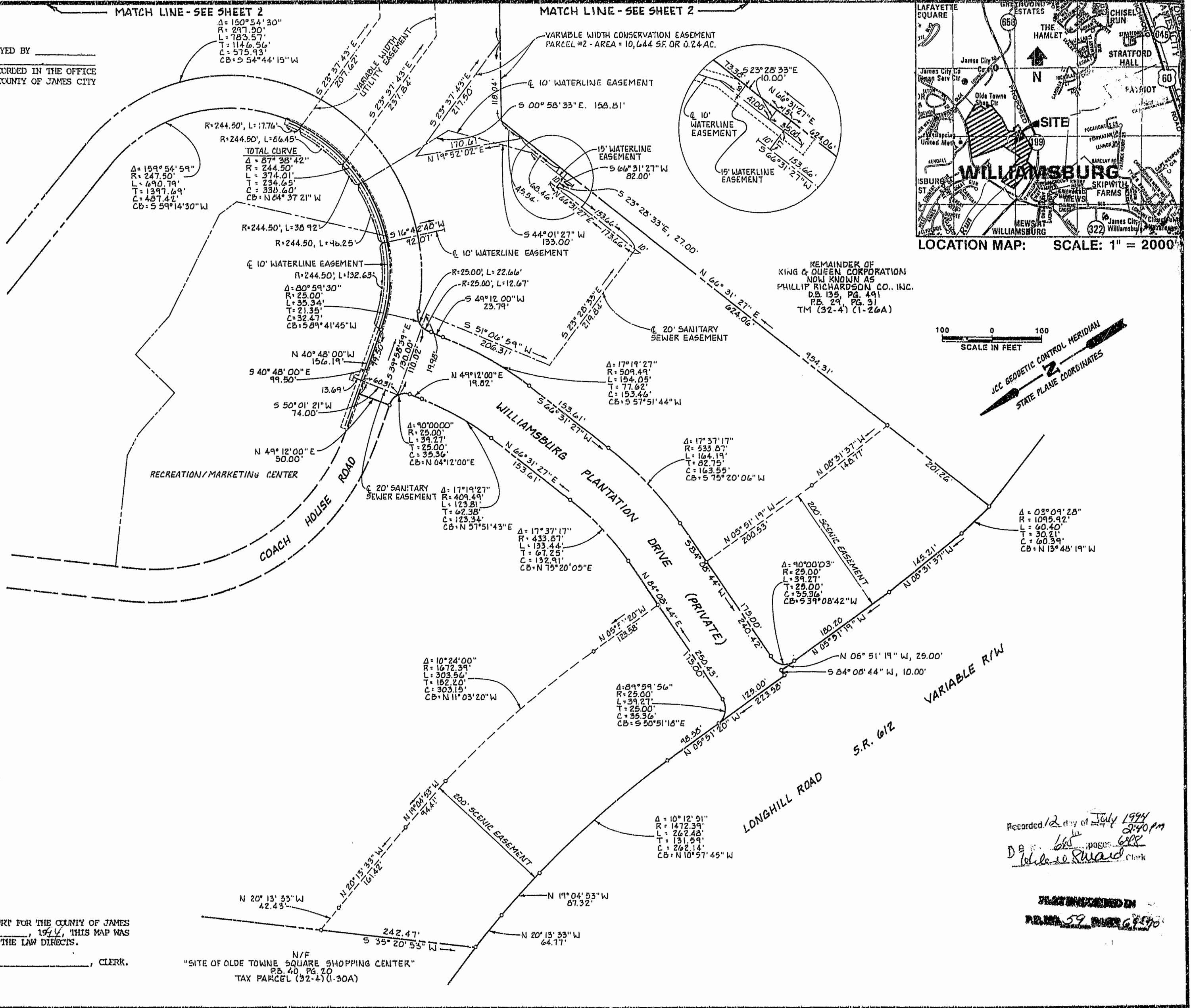
IN THE CLERK'S OFFICE OF THE CIRCUIT COURT FOR THE COUNTY OF JAMES CITY THE 12th DAY OF July, 1994, THIS MAP WAS PRESENTED AND ADMITTED TO THE RECORD AS THE LAW DIRECTS.

TESTE: _____, CLERK.

PLAT BOOK: 59, PAGE: 64 & 70

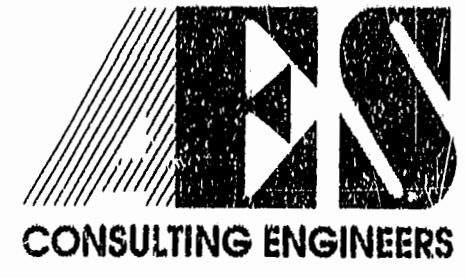
MATCH LINE - SEE SHEET 2

MATCH LINE - SEE SHEET 2



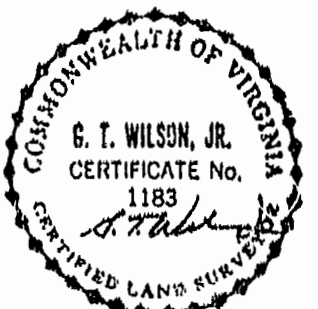
Recorded 12th day of July 1994
D.B. 66, pages 68 & 69
John E. Ruard, Clerk

PLAT INDEXED IN
P.B. 59, PAGES 64 & 70



5248 Olde Towne Road, Suite 1
Williamsburg, Virginia 23188
(804) 253-0040
Fax (804) 220-8994

PLAT SHOWING UTILITY, SCENIC,
AND CONSERVATION EASEMENTS
WILLIAMSBURG PLANTATION, PHASE 1
OWNER: WILLIAMSBURG PLANTATION, INC.
BERKELEY DISTRICT JAMES CITY COUNTY VIRGINIA



No.	DATE	REVISION / COMMENT / NOTE	BY
1	5-26-94	REVISIONS PER J.C.C. COMMENTS	EMG

Designed EMG	Drawn CLJ
Scale 1"=100'	Date 2/14/94
Project No. 7555	
Drawing No. 1 OF 2	