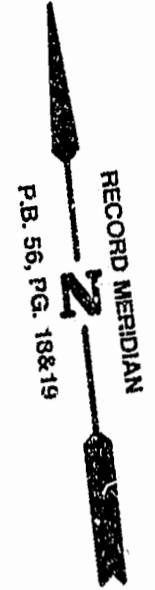
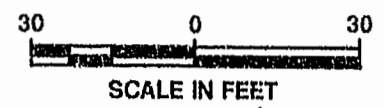
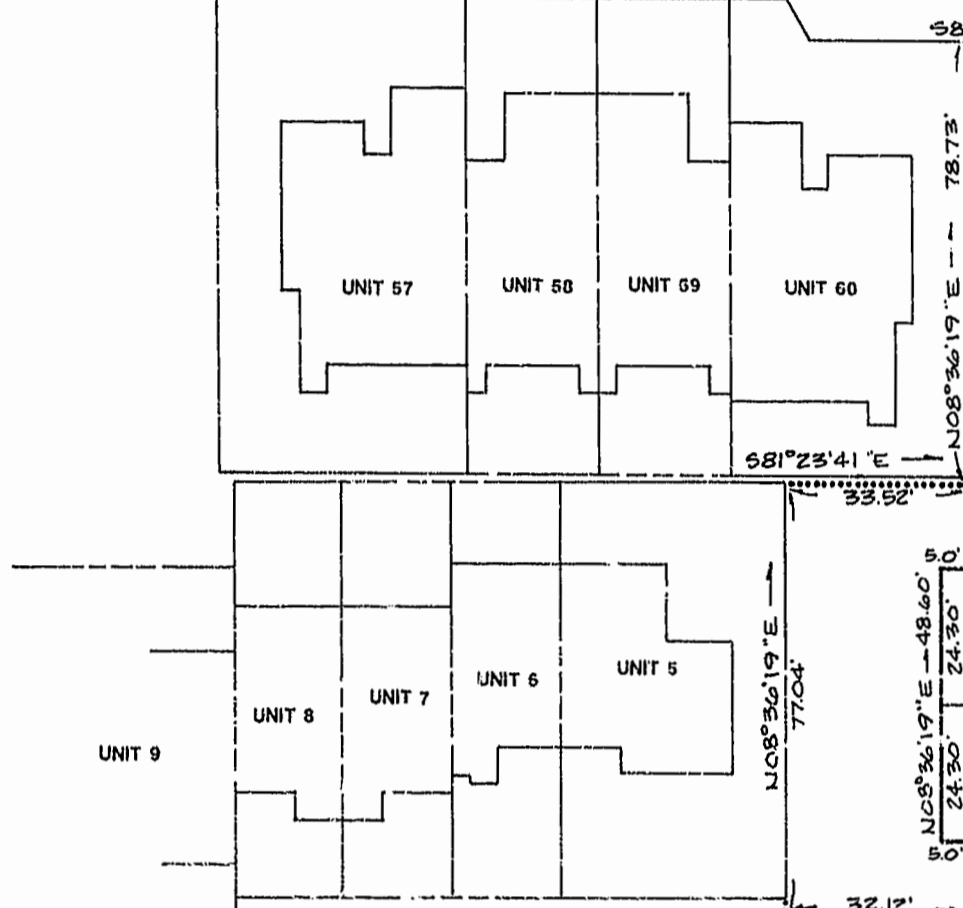
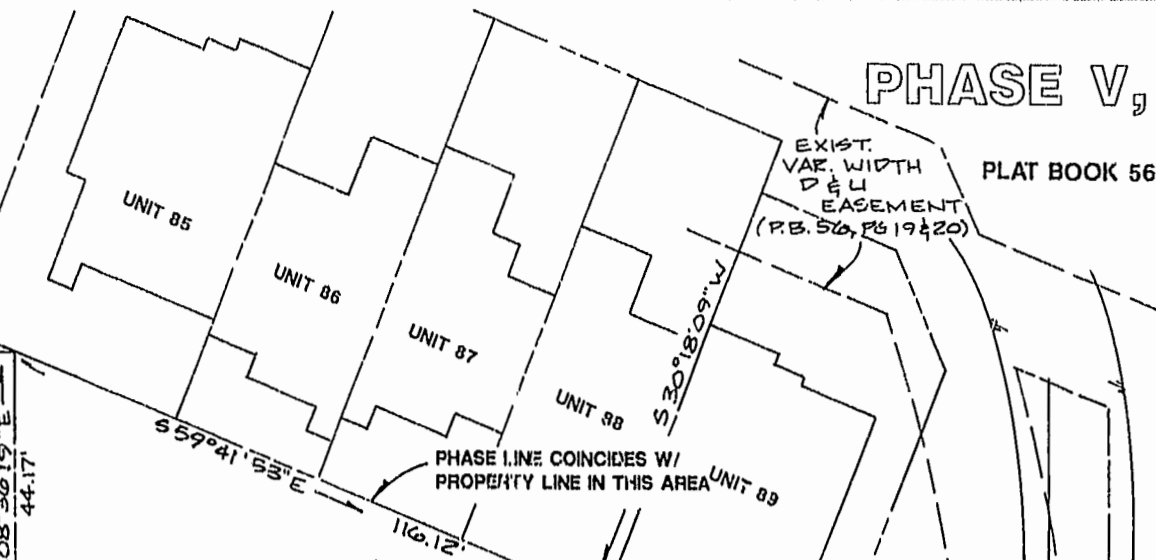
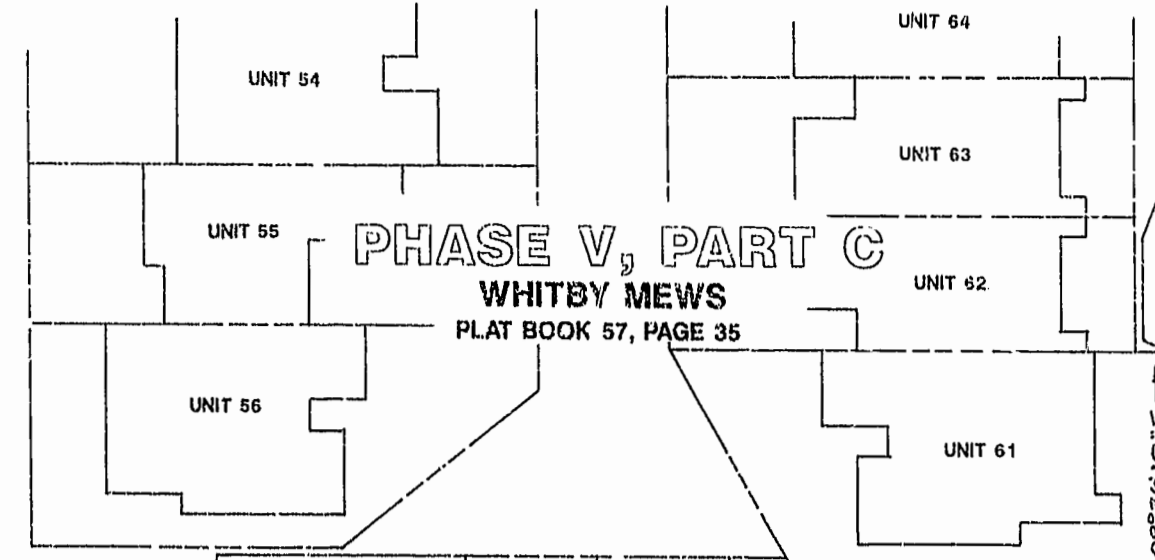


PHASE V, PART B

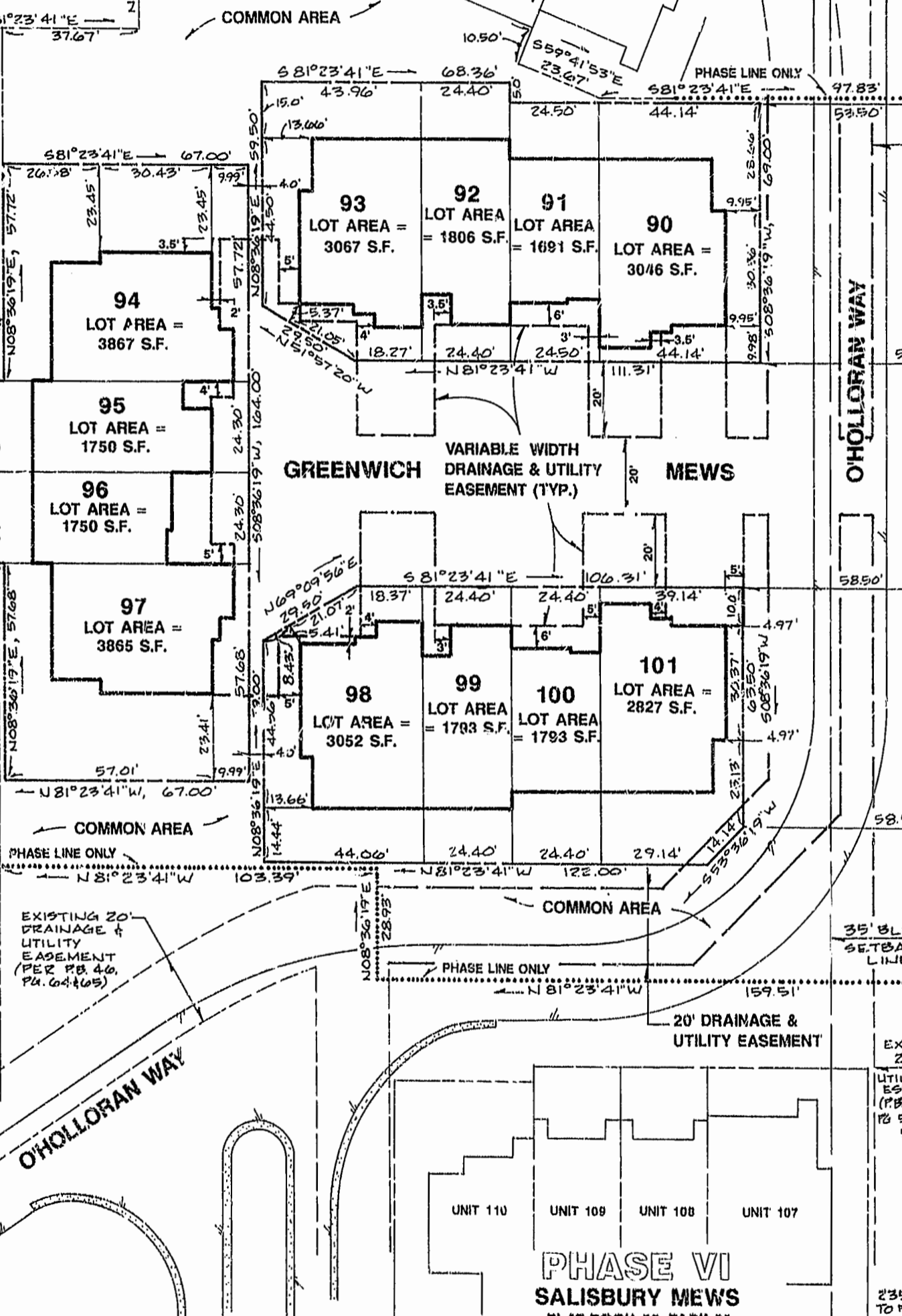
PLAT BOOK 56, PAGE 19



PHASE V, PART C
WHITBY MEWS
PLAT BOOK 57, PAGE 35



PHASE I
CARLISLE MEWS
PLAT BOOK 46, PAGE 65



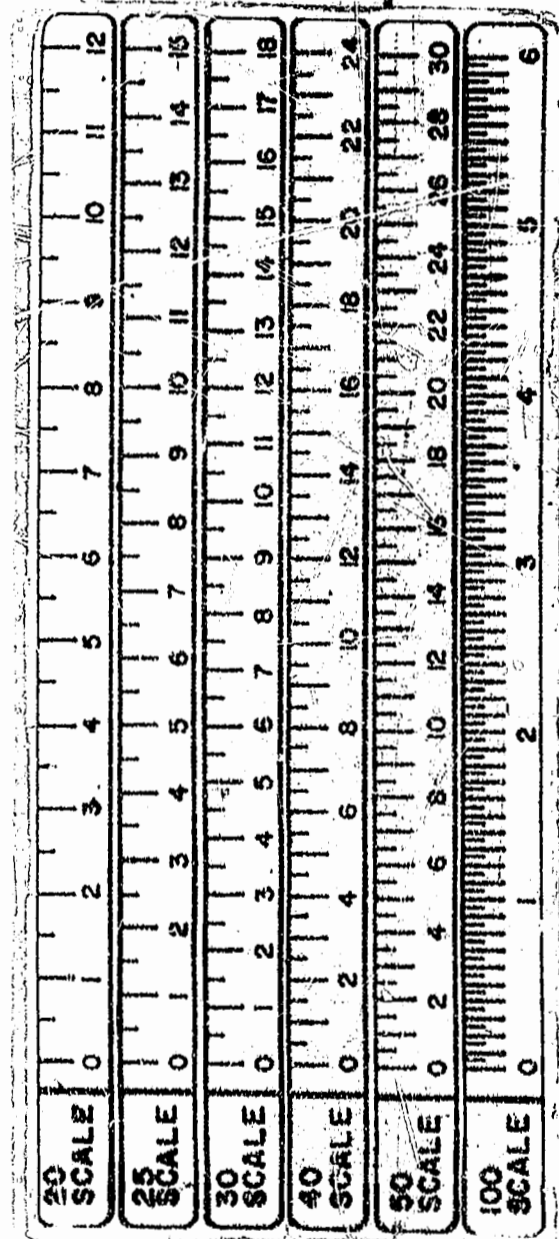
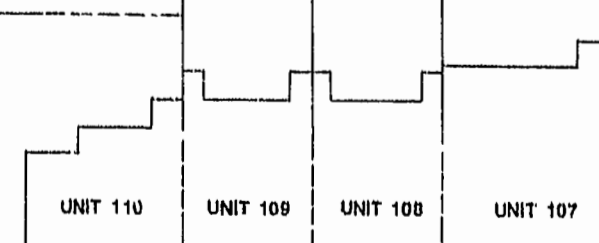
20' DRAINAGE & UTILITY EASEMENT

O'HOLLORAN WAY

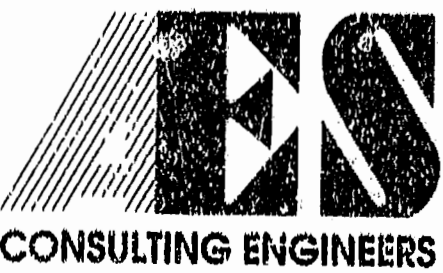
GREENWICH VARIABLE WIDTH DRAINAGE & UTILITY EASEMENT (TYP.) MEWS

ROLLING MEADOWS
TAX PARCEL: (33-3)(1-37)

PHASE VI
SALISBURY MEWS
PLAT BOOK 58, PAGE 59



12:50 PM
11/19/94
D.S. 185
R. T. Wilson, Jr.



5248 Olde Towne Road, Suite 1
Williamsburg, Virginia 23188
(674) 253-0040
Fax (804) 220-8994

**PLAT OF SUBDIVISION
THE MEWS
AT WILLIAMSBURG
PHASE VII, UNITS 90-101**

OWNER: G. LEWIS WALTRIP DEVELOPMENT, INC.
BERKELEY DISTRICT JAMES CITY COUNTY VIRGINIA



No.	DATE	REVISION / COMMENT / NOTE	BY

Designed JSB	Drawn CMA
Scale 1" = 30'	Date APR. 1994
Project No. 5656	
Drawing No. 2 OF 2	