

NOTE REGARDING BUILDING SETBACKS:
UNLESS OTHERWISE NOTED, BUILDING
SETBACKS FOR THE LOTS SHOWN ARE
AS FOLLOWS:

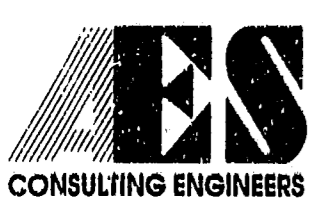
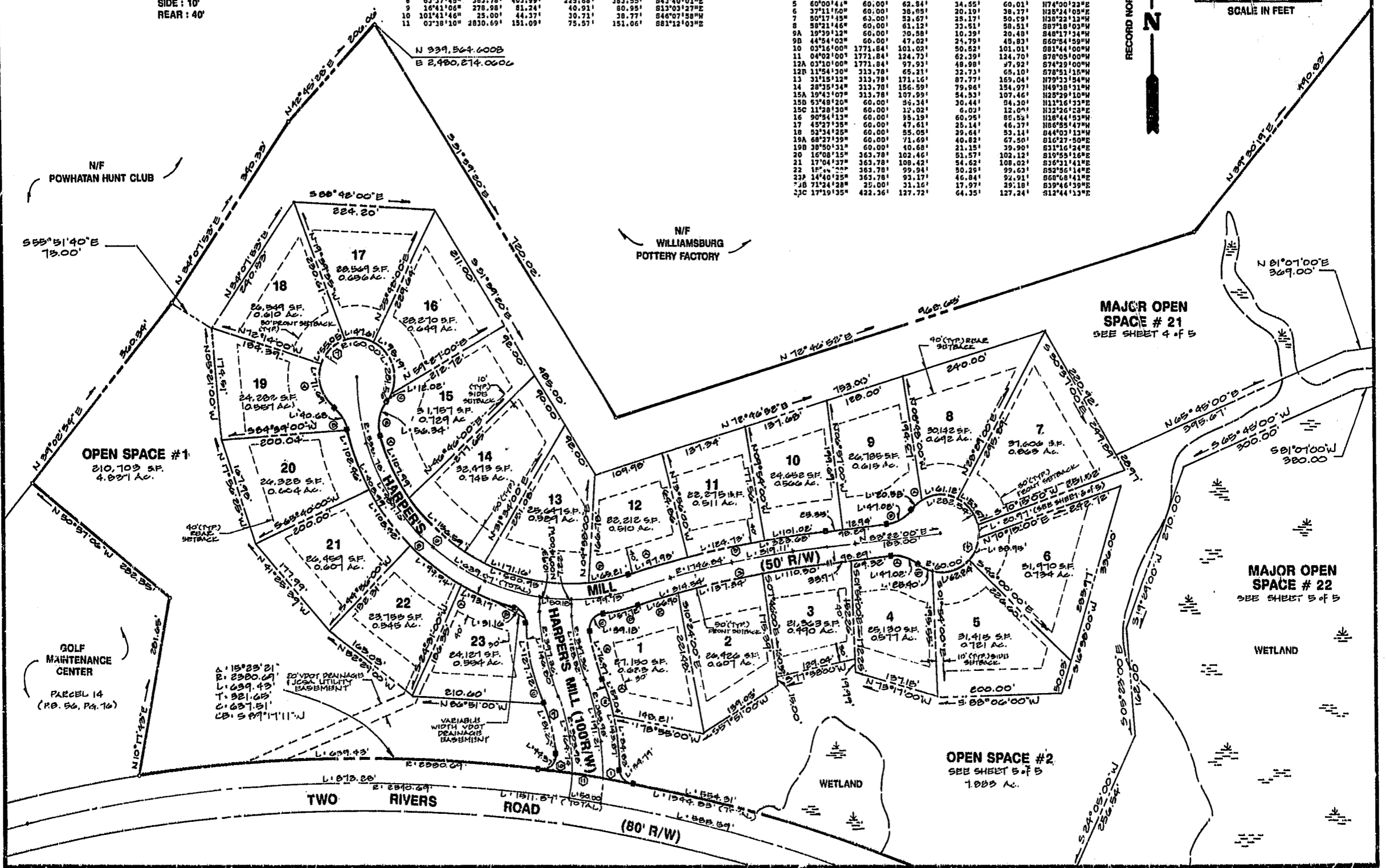
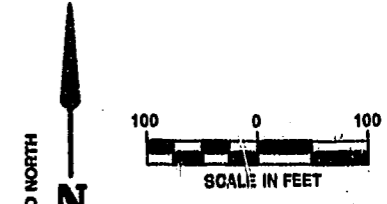
FRONT: 50'
SIDE: 10'
REAR: 40'

RIGHT-OF-WAY CURVE DATA

NO.	DELTA	RADIUS	LENGTH	TANGENT	CHORD	CHORD BEARING
1	79°44'01"	25.00'	34.79'	20.88'	32.05'	N39°30'08"W
2	21°45'03"	378.98'	143.87'	72.81'	143.01'	N10°31'28"W
3	10°23'00"	1721.84'	314.34'	157.71'	314.11'	N78°08'50"E
4	26°48'04"	60.00'	282.34'	162.29'	323.23'	N06°38'00"W
5	10°28'00"	1771.84'	323.68'	162.29'	323.23'	N78°08'50"E
6	91°28'24"	313.78'	500.95'	321.95'	449.42'	N61°21'48"W
7	268°32'23"	60.00'	281.56'	162.29'	323.23'	N78°08'50"E
8	63°37'48"	363.78'	403.39'	225.68'	383.55'	N43°40'03"E
9	16°41'06"	278.98'	81.24'	48.91'	80.95'	N13°03'27"E
10	101°41'46"	25.00'	44.37'	30.71'	38.77'	N46°07'58"W
11	03°18'10"	1830.69'	151.09'	75.57'	151.06'	S81°12'03"E

LOT CURVE DATA

NO.	DELTA	RADIUS	LENGTH	TANGENT	CHORD	CHORD BEARING
1A	00°00'14"	378.98'	59.04'	29.59'	58.98'	N16°56'13"W
1B	13°35'27"	322.36'	76.47'	38.41'	76.28'	N14°36'16"W
1C	89°48'03"	25.00'	39.18'	24.91'	35.29'	N37°05'28"E
1D	09°05'30"	163.78'	37.72'	18.92'	37.66'	N77°26'46"E
1E	02°13'34"	1771.84'	66.00'	33.45'	66.88'	N74°00'47"E
2	04°34'13"	1721.84'	137.34'	68.71'	137.33'	N77°24'41"E
3	03°40'13"	1721.84'	110.30'	55.17'	110.28'	N81°15'54"E
4A	44°24'02"	60.00'	47.02'	24.79'	45.89'	N43°10'59"E
4B	24°15'18"	60.00'	25.40'	12.89'	25.21'	N63°51'37"E
5	60°00'44"	60.00'	62.84'	34.55'	60.01'	N74°00'22"E
6	37°11'50"	60.00'	38.09'	20.19'	38.27'	N28°24'08"W
7	30°17'45"	63.00'	23.67'	12.17'	23.59'	N35°22'18"W
8	58°21'46"	60.00'	61.12'	31.51'	58.51'	S87°18'03"W
9A	19°39'12"	60.00'	30.58'	10.39'	30.48'	S48°17'34"W
9B	44°54'03"	60.00'	47.02'	24.79'	45.83'	S60°54'59"W
10	03°16'00"	1771.84'	101.02'	50.52'	101.01'	S81°44'00"W
11	04°02'00"	1771.84'	124.73'	62.39'	124.70'	S78°05'00"W
12A	03°10'00"	1771.84'	97.93'	48.98'	97.92'	S74°29'00"W
12B	11°54'10"	313.78'	65.21'	32.73'	65.10'	S78°21'18"W
13	31°15'12"	313.78'	171.16'	87.77'	169.04'	N79°31'54"W
14	28°35'34"	313.78'	156.59'	79.96'	154.97'	N49°38'31"W
15A	19°43'07"	313.78'	107.99'	54.53'	107.46'	N25°29'10"W
15B	53°48'20"	60.00'	36.34'	18.44'	36.30'	N11°16'33"E
15C	11°29'15"	60.00'	21.01'	10.51'	21.00'	N12°26'45"E
16	90°54'13"	60.00'	65.19'	32.59'	60.25'	N85°53'11"E
17	45°27'35"	60.00'	47.61'	25.14'	46.37'	N68°55'47"W
18	52°34'25"	60.00'	55.05'	29.64'	53.14'	S44°03'13"W
19A	68°27'39"	60.00'	71.69'	40.82'	67.50'	S16°27'50"W
19B	38°50'31"	60.00'	40.68'	21.15'	39.90'	S31°16'24"E
20	16°08'12"	363.78'	102.46'	51.57'	102.12'	S19°18'11"E
21	17°04'37"	363.78'	108.42'	54.62'	108.02'	S18°31'43"E
22	1F, 2"	363.78'	99.94'	50.29'	99.63'	S52°56'14"E
23A	14°40'25"	363.78'	93.17'	46.84'	92.91'	S68°08'41"E
23B	71°24'28"	25.00'	31.16'	17.97'	29.18'	S39°46'39"E
23C	17°19'35"	422.36'	127.72'	64.35'	127.24'	S12°44'13"E



5248 Olde Towne Road, Suite 1
Williamsburg, Virginia 23183
(804) 253-0040
Fax (804) 220-8994

PLAT OF
HARPER'S MILL
THE
GOVERNOR'S LAND
At Two Rivers
POWHATAN DISTRICT, JAMES CITY COUNTY, VIRGINIA



No.	DATE	REVISION / COMMENT / NOTE	BY

Designed AES	Drawn AES
Scale 1" = 100'	Date OCT. 1993
Project No. 7173	
Drawing No. 3 of 5	