

**LOT CURVE DATA TABLE**

CURV.	DELTA	RADIUS	ARC	TANGENT	CHORD	CHORD BEARING
C1	06°31'40"	616.99'	70.30'	35.19'	70.26'	N74°50'10"E
C2	01°30'07"	1034.15'	27.11'	13.56'	27.11'	N72°10'23"E
C3	08°37'59"	1034.15'	155.82'	79.06'	155.62'	N77°23'27"E
C4	07°59'05"	1034.15'	144.12'	72.18'	144.00'	N85°41'53"E
C5	07°45'45"	1034.15'	140.11'	70.16'	140.00'	S88°25'36"E
C6	05°14'43"	1034.15'	94.67'	47.37'	94.64'	S79°55'12"E
C7	05°53'47"	500.20'	51.48'	25.76'	51.45'	S80°14'53"E
C26	06°52'30"	1084.14'	130.05'	65.12'	130.01'	N82°21'52"W
C27	06°56'08"	1084.14'	131.23'	65.70'	131.15'	N89°16'11"W
C28	04°22'11"	1084.14'	82.68'	41.36'	82.66'	S88°04'40"W
C29	59°41'30"	25.00'	26.05'	14.34'	24.80'	N67°19'41"W
C30	06°45'20"	285.50'	33.66'	16.25'	33.64'	N40°47'36"W
C31	28°40'26"	285.50'	142.88'	72.97'	141.30'	N58°30'29"W
C32	26°23'54"	285.50'	131.54'	66.96'	130.38'	N66°02'40"W
C33	25°30'08"	285.50'	127.08'	64.61'	126.03'	S68°00'19"W
C34	52°37'01"	25.00'	22.96'	12.36'	22.96'	S61°33'46"W
C35	15°44'44"	25.00'	6.87'	3.46'	6.85'	N64°15'22"W
C36	57°46'00"	60.00'	60.49'	33.10'	57.96'	N85°16'00"W
C37	56°25'47"	60.00'	59.09'	32.19'	55.73'	S37°38'07"W
C38	63°48'13"	60.00'	60.90'	38.82'	65.18'	N23°28'53"W
C39	79°42'06"	25.00'	34.78'	20.87'	32.04'	S16°31'51"E
C40	18°29'10"	285.50'	92.12'	46.46'	91.72'	S14°04'31"E

**RIGHT-OF-WAY CURVE DATA TABLE**

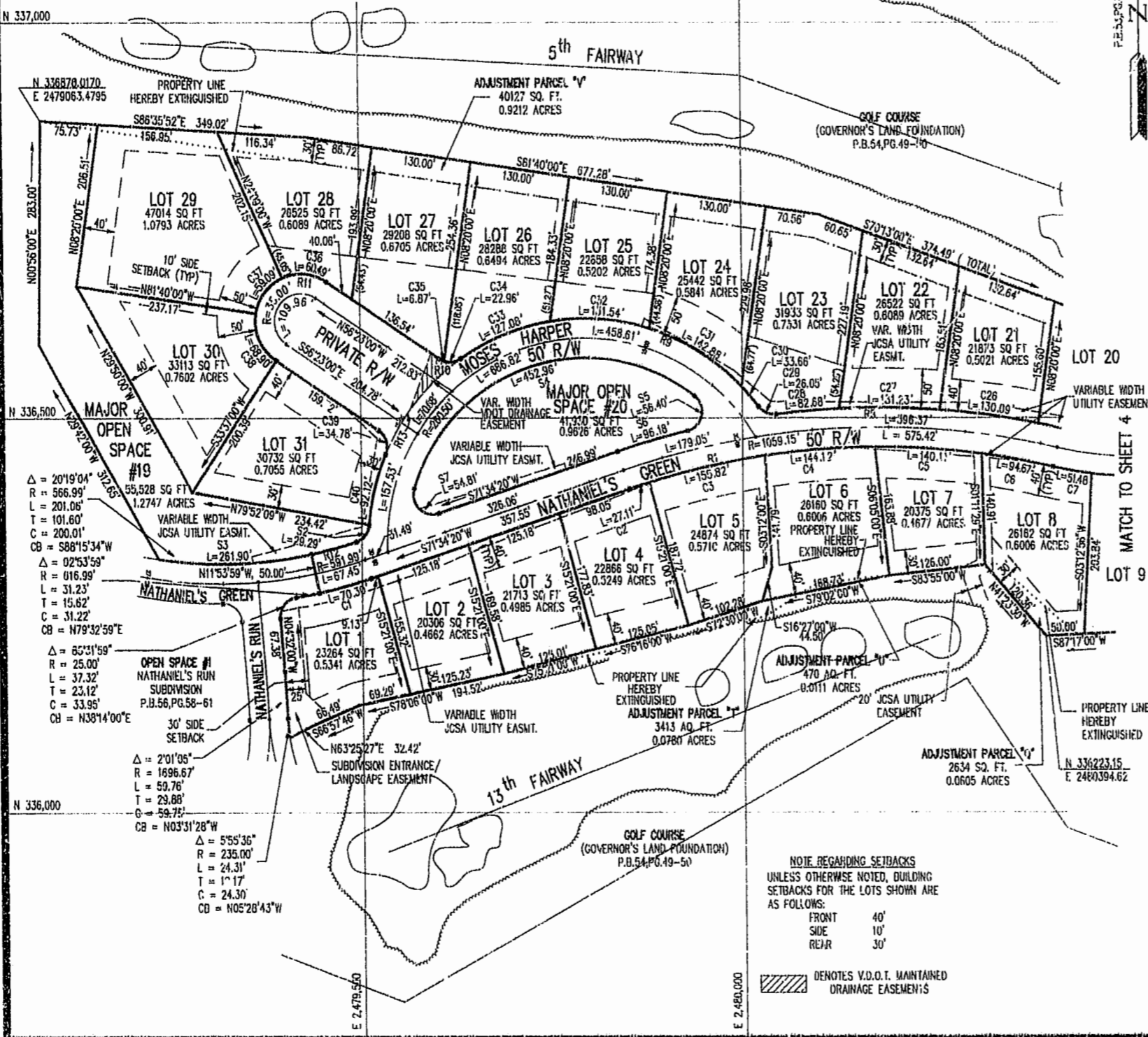
CURVE	DELTA	RADIUS	ARC	TANGENT	CHORD	CHORD BEARING
R1	31°07'40"	1034.15'	561.83'	288.04'	554.95'	N87°08'10"E
R8	19°48'26"	1084.15'	574.79'	189.26'	372.92'	N67°12'13"W
R9	87°10'49"	285.50'	435.16'	272.50'	394.24'	N81°04'51"W
R10	68°21'45"	25.00'	29.83'	16.98'	28.83'	S89°26'07"W
R11	180°00'00"	60.00'	188.50'	120.00'	120.00'	S33°37'00"W
R12	06°08'53"	586.99'	60.84'	30.45'	60.81'	S75°01'35"W
R13	31°36'08"	285.50'	150.13'	81.69'	157.06'	S39°17'11"W

**OPEN SPACE CURVE DATA TABLE**

CURVE	DELTA	RADIUS	ARC	TANGENT	CHORD	CHORD BEARING
S2	67°07'11"	25.00'	29.29'	16.58'	27.64'	S38°23'31"W
S3	26°27'57"	566.99'	261.90'	133.33'	259.58'	S85°11'07"W
S4	110°12'05"	235.50'	452.96'	337.59'	386.29'	N72°17'46"E
S5	129°15'31"	25.00'	56.40'	52.72'	45.18'	S12°01'34"W
S6	05°04'59"	1084.15'	96.18'	48.12'	96.15'	S74°06'51"W
S7	125°37'24"	25.00'	54.81'	48.67'	44.48'	N45°36'58"W

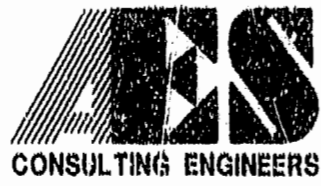
**MAJOR OPEN SPACE CALCULATIONS**

ADJUSTMENT PARCELS "O", "P", "Q", "U", "V" & "W" (TOTAL AREA OF DEDUCTION)	59,918 S.F. ±	1.376 AC. ±
ADJUSTMENT PARCELS "R", "S" & "T" (TOTAL AREA OF ADDITION)	9,667 S.F. ±	0.222 AC. ±
NET ACREAGE ADJUSTMENT OF GOLF COURSE (NET AREA OF DEDUCTION)	50,251 S.F. ±	1.154 AC. ±
NET ACREAGE PLATTED AS MAJOR OPEN SPACE (INCLUDES MAJOR OPEN SPACE ABOVE AND NET ACREAGE ADJUSTMENT OF GOLF COURSE)	47,207 S.F. ±	1.094 AC. ±



**NOTE REGARDING SETBACKS**  
 UNLESS OTHERWISE NOTED, BUILDING SETBACKS FOR THE LOTS SHOWN ARE AS FOLLOWS:  
 FRONT 40'  
 SIDE 10'  
 REAR 30'

/// DENOTES V.D.O.T. MAINTAINED DRAINAGE EASEMENTS



5248 Olde Towne Road, Suite 1  
 Williamsburg, Virginia 23188  
 (804) 253-0040  
 Fax (804) 220-8884

PLAT OF  
**NATHANIEL'S GREEN, BLOCK "B"**  
 THE  
**GOVERNOR'S LAND**  
*At Two Rivers*  
 POHATAN DISTRICT JAMES CITY COUNTY VIRGINIA



No.	DATE	REVISION / COMMENT / NOTE	BY

Designed	Drawn
Scale	Date
1"=100'	SEPT. 1993
Project No.	7173
Drawing No.	Sht. 3 of 4

9:56 am  
 1994  
 Oct 1993  
 120  
 [Signature]  
 Clerk