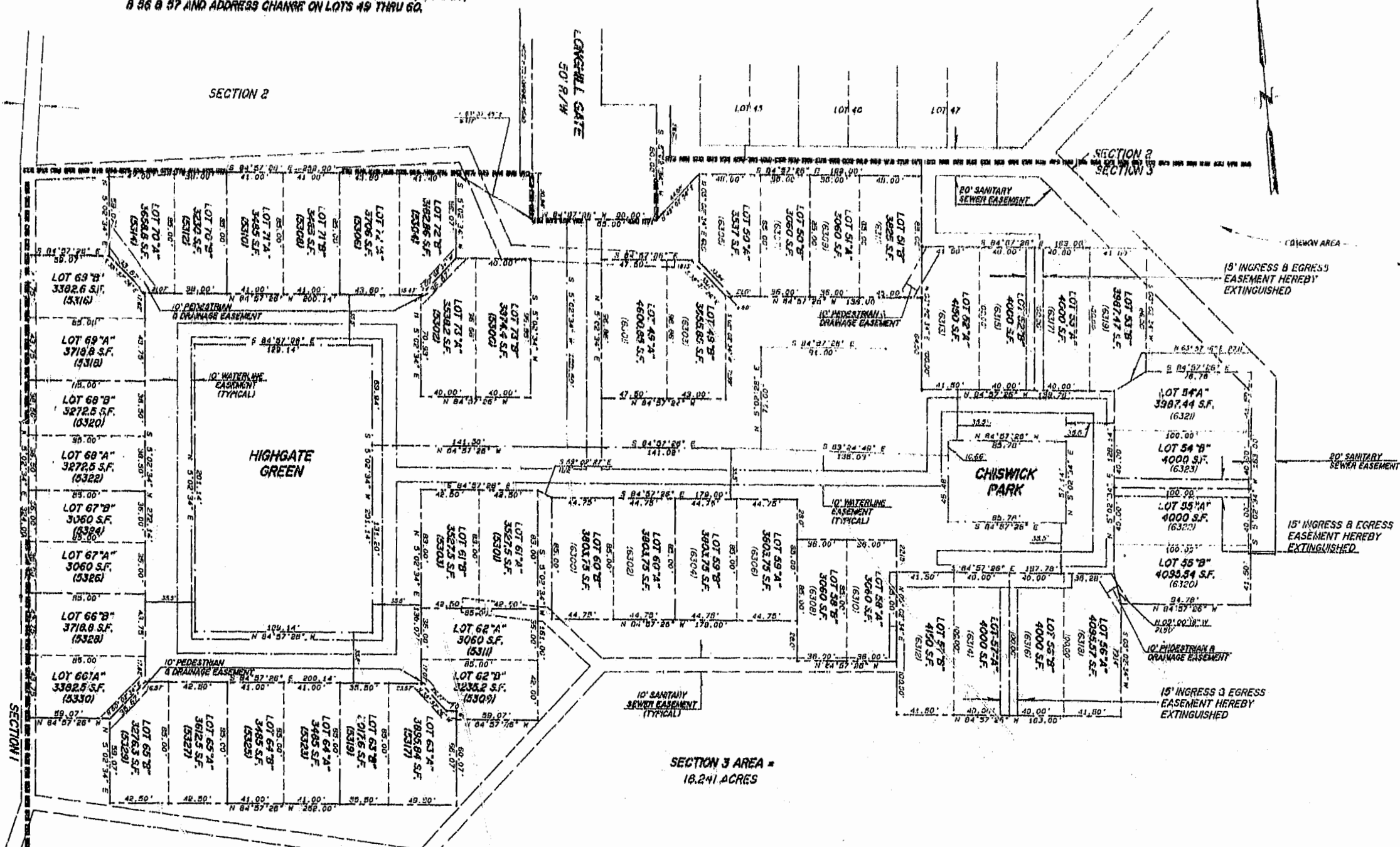


NOTE:  
 AMENDMENTS FOR THIS PLAT ARE EXTINGUISHMENT OF 15'  
 INGRESS & EGRESS EASEMENT BETWEEN LOTS 52 & 53, 54 & 55,  
 56 & 57 AND ADDRESS CHANGE ON LOTS 49 THRU 60.

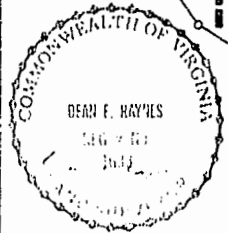
15' SANITARY  
 SEWER EASEMENT  
 (TYPICAL)



SECTION 3 AREA =  
 18.241 ACRES

NOTE:  
 ORIGINAL PLAT PREPARED BY SPEARMAN & ASSOC., P. C.  
 REVISIONS DONE BY H.L.S. LAND SURVEYING

LOGAN SYSTEM: 1 2 3



H. L. S. LAND SURVEYING  
 ROUTE #60  
 LANEXA, VIRGINIA 23089  
 (804) 966 - 7017

10:34 p.m.  
 Recorded and filed in  
 in  
 D.B. No. 693, Page 18  
 H. L. S. Land Surveying

AMENDED SUBDIVISION PLAT  
 FOR THE CLUSTER DEVELOPMENT  
 LONGHILL GATE

SECTION 3  
 LOCATED  
 JAMES CITY COUNTY, VIRGINIA  
 SCALE: 1" = 50'  
 DATE: AUGUST 4, 1989  
 REV'D. OCTOBER 1, 1991  
 REV'D. AUGUST 16, 1993