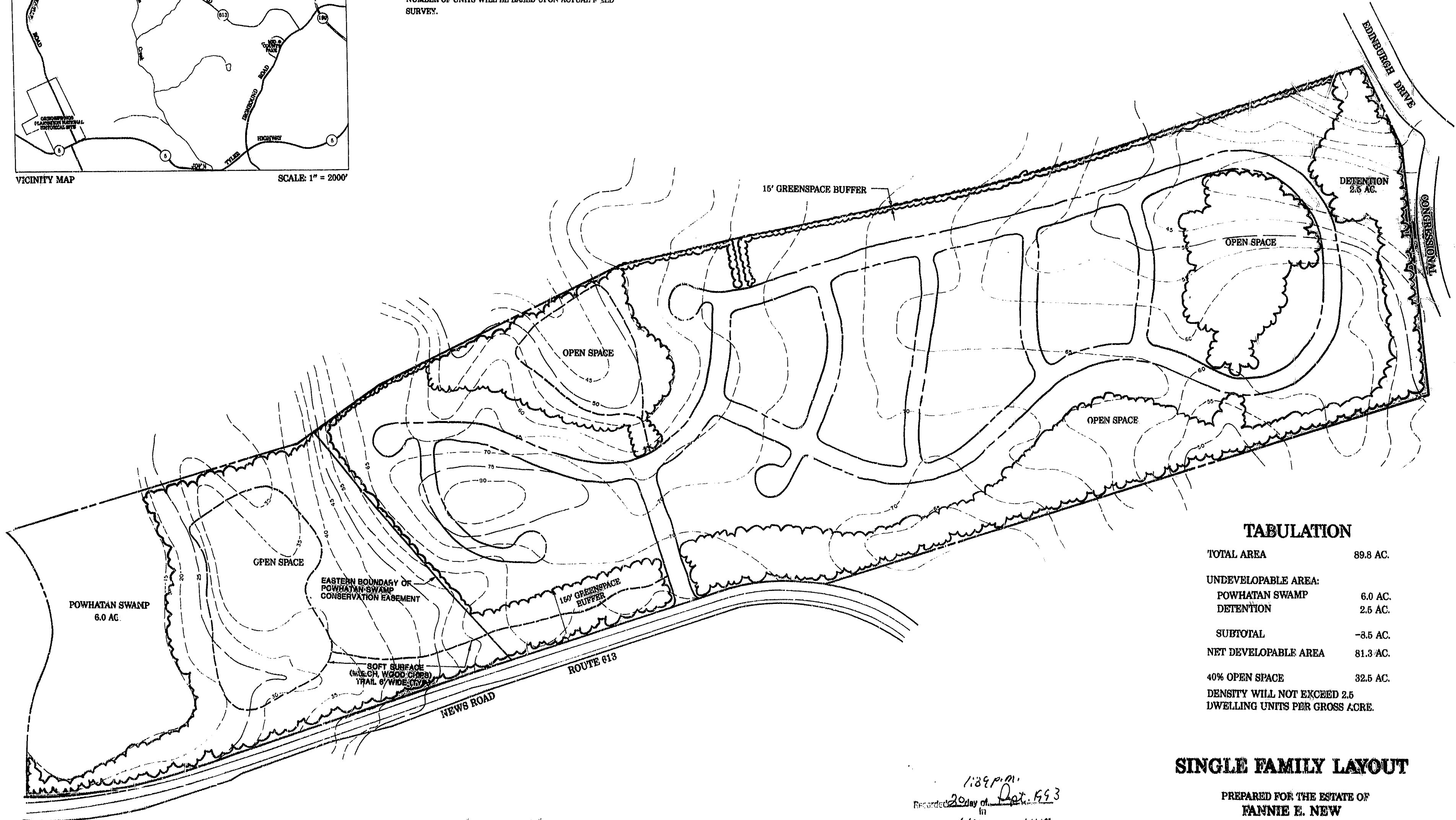


VICINITY MAP SCALE: 1" = 2000'

NOTE:
 1. THIS DRAWING IS BASED UPON EXISTING COUNTY MAPS AND IS NOT A FIELD SURVEY. ALL AREAS ARE APPROXIMATE PLANIMETERED AREAS. FINAL DEVELOPABLE AREA, OPEN SPACE ACREAGE, AND TOTAL NUMBER OF UNITS WILL BE BASED UPON ACTUAL FIELD SURVEY.



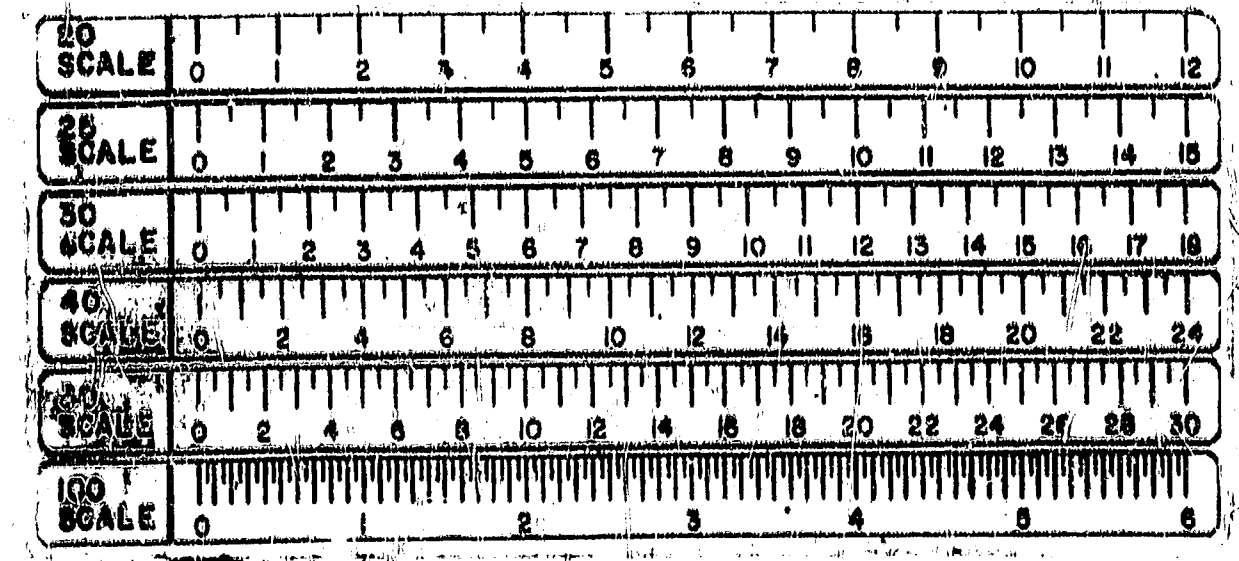
TABULATION

TOTAL AREA	89.8 AC.
UNDEVELOPABLE AREA:	
POWHATAN SWAMP	6.0 AC.
DETENTION	2.5 AC.
SUBTOTAL	-8.5 AC.
NET DEVELOPABLE AREA	81.3 AC.
40% OPEN SPACE	32.5 AC.
DENSITY WILL NOT EXCEED 2.5 DWELLING UNITS PER GROSS ACRE.	

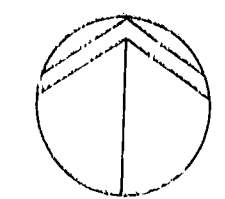
SINGLE FAMILY LAYOUT

PREPARED FOR THE ESTATE OF
FANNIE E. NEW

NEWS ROAD SITE
 JAMES CITY COUNTY, VIRGINIA



58 16



1:29 p.m.
 Recorded 20 day of Oct. 1993
 in
 D. b. No. 641 pages 447
 Mike Eward