

NOTE: FOR THOSE LOTS ADJOINING PONDS OR LAKES, THE CORRESPONDING PROPERTY LINE BETWEEN THE LAKE OR POND AND THE LOT SHALL BE THE LINE OF NORMAL POOL OF THE ADJACENT POND OR LAKE. THE AREA OF EACH LOT IS CALCULATED TO THE LINE OF NORMAL POOL. THE DOTTED LINE REPRESENTS A TRAVERSE LINE (FOR CLOSURE) AND DOES NOT REPRESENT A PROPERTY LINE.

NOTE REGARDING BUILDING SETBACKS  
UNLESS OTHERWISE NOTED, BUILDING SETBACKS FOR THE LOTS SHOWN ARE AS FOLLOWS:

FRONT: 50'  
SIDE: 10'  
REAR: 40'

NOTE: FRONT SETBACK FOR LOT 35 IS A SPAN'S LINE FROM A POINT ON THE EASTERN LINE AND 60' ALONG THE WESTERN LINE.

NOTE:

THIS PLAT OF CORRECTION OF THE SUBDIVISION OF PLANTER'S ROUND HAS BEEN PREPARED TO CORRECT INACCURATE LOT CURVE DATA FOR LOTS 25, 26, 27, AND 28, AND THE ASSOCIATED RIGHT-OF-WAY CURVE DATA FOR THESE LOTS. NO OTHER INFORMATION AS SHOWN ON THE PLAT RECORDED IN PLAT BOOK 56, PAGE 60 (SHEET 5 OF 5) HAS BEEN CHANGED OR REVISED.

LOT CURVE DATA TABLE

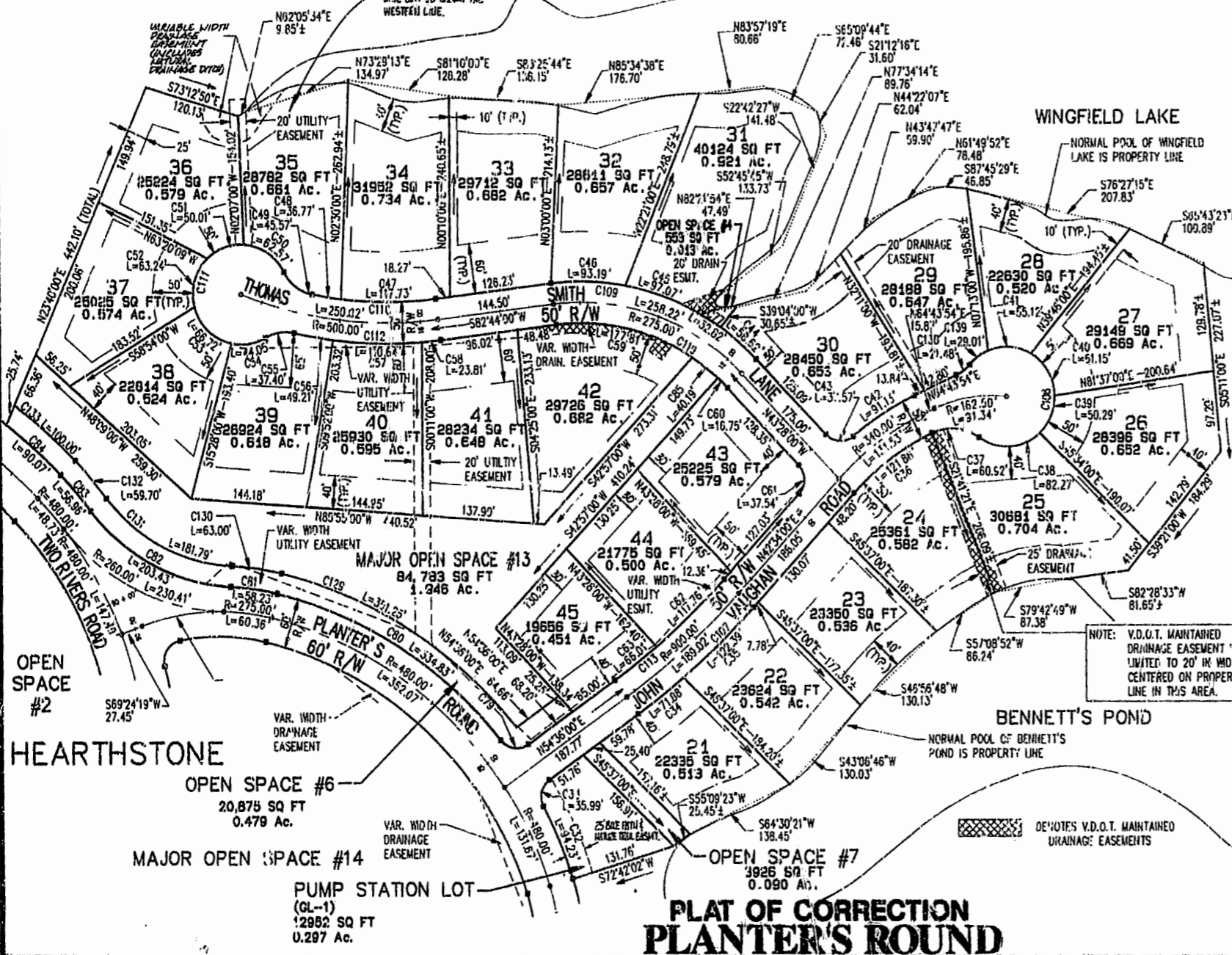
No.	DELTA	RADIUS	LENGTH	TANGENT	CHORD	CHORD BEARING
C37	13°35'12"	510.00'	94.23'	17.25'	94.10'	S22°35'34"E
C38	32°23'10"	75.00'	35.99'	21.92'	32.96'	S132°12'25"W
C39	34°27'09"	925.00'	71.88'	35.96'	71.86'	N52°22'26"E
C40	07°34'51"	525.00'	122.39'	61.28'	122.30'	N46°21'26"E
C41	22°03'54"	315.00'	171.86'	61.70'	121.10'	N53°28'57"E
C42	60°42'07"	57.50'	80.92'	33.37'	58.11'	S84°55'05"E
C43	78°33'55"	60.00'	42.27'	49.08'	75.98'	N88°09'01"E
C44	48°01'10"	60.00'	50.29'	26.73'	48.83'	N22°51'29"E
C45	58°23'33"	60.00'	61.15'	33.53'	56.54'	N30°20'52"W
C46	52°38'15"	60.00'	55.12'	29.68'	53.20'	N85°54'40"W
C47	14°18'10"	365.00'	91.13'	45.80'	90.89'	N5°34'46"E
C48	86°08'24"	20.00'	37.57'	23.36'	34.13'	S83°31'12"E
C49	11°14'45"	300.00'	58.62'	29.40'	59.53'	S49°31'53"E
C50	18°52'17"	300.00'	97.07'	48.96'	96.64'	N70°12'52"W
C51	17°47'50"	300.00'	93.19'	46.97'	92.81'	S88°22'05"E
C52	14°12'02"	475.00'	117.73'	58.17'	117.43'	S89°57'01"W
C53	04°26'07"	475.00'	36.77'	18.39'	38.76'	N80°50'55"W
C54	14°18'29"	50.00'	45.57'	24.51'	44.01'	N52°31'07"W
C55	58°45'13"	60.00'	62.57'	34.47'	50.78'	N56°16'50"W
C56	47°45'13"	60.00'	50.01'	26.56'	48.57'	S89°57'48"W
C57	63°23'07"	60.00'	63.24'	34.91'	60.35'	N15°53'32"E
C58	33°43'16"	60.00'	66.72'	37.29'	63.34'	S46°09'38"E
C59	42°03'55"	60.00'	44.05'	23.07'	43.07'	N80°56'53"E
C60	42°51'40"	50.00'	37.40'	19.63'	36.54'	N81°20'46"E
C61	65°22'12"	525.00'	49.21'	24.62'	49.19'	S79°54'30"E
C62	12°04'30"	525.00'	110.64'	55.53'	110.44'	S80°37'51"E
C63	02°35'54"	525.00'	23.81'	1.91'	23.81'	N84°01'57"E
C64	40°45'03"	250.00'	177.01'	92.85'	174.09'	N74°53'28"E
C65	03°50'19"	250.00'	10.75'	1.38'	10.75'	S45°23'10"E
C66	68°02'00"	25.00'	37.54'	23.33'	34.11'	S08°27'00"E
C67	07°42'40"	875.00'	117.76'	58.97'	117.67'	S46°25'20"W
C68	04°19'20"	875.00'	66.01'	33.02'	65.95'	S52°26'20"W
C69	27°42'24"	60.00'	29.61'	14.80'	28.73'	S53°57'54"W
C70	24°37'12"	50.00'	21.48'	10.91'	21.37'	S52°25'18"W

OPEN SPACE CURVE DATA TABLE

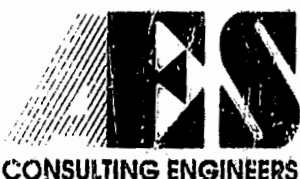
No.	DELTA	RADIUS	LENGTH	TANGENT	CHORD	CHORD BEARING
C77	06°16'07"	300.00'	37.82'	16.43'	32.81'	N57°47'49"W
C78	86°46'53"	25.00'	37.87'	23.63'	34.35'	S82°00'34"E
C79	37°37'01"	510.00'	334.83'	173.70'	320.85'	S57°26'38"E
C80	10°56'21"	305.00'	58.25'	29.20'	58.14'	S81°42'18"E
C81	49°35'53"	735.00'	203.43'	108.58'	107.14'	S82°22'32"E
C82	05°16'33"	520.00'	56.96'	28.51'	56.93'	S40°42'52"E
C83	08°24'01"	614.31'	90.07'	45.11'	89.99'	S48°03'09"E
C84	09°12'37"	250.00'	40.19'	20.14'	40.14'	N51°54'31"W
C85	37°37'01"	535.00'	351.25'	182.22'	344.97'	N57°25'38"W
C86	10°56'21"	330.00'	63.00'	31.60'	62.31'	N81°42'18"W
C87	49°35'53"	210.00'	181.79'	97.03'	176.16'	N82°22'32"W
C88	06°16'33"	545.00'	58.70'	29.88'	58.67'	N40°42'52"W
C89	08°57'42"	639.31'	100.00'	50.10'	99.89'	N46°19'59"W

RIGHT-OF-WAY CURVE DATA TABLE

No.	DELTA	RADIUS	LENGTH	TANGENT	CHORD	CHORD BEARING
C107	12°02'00"	925.00'	194.27'	97.49'	193.91'	N48°35'00"E
C108	26°19'17"	60.00'	277.84'	88.25'	88.25'	N07°13'40"E
C109	53°48'00"	300.00'	281.70'	152.20'	271.46'	N70°22'00"W
C110	18°38'09"	475.00'	154.50'	77.94'	153.81'	N87°56'56"W
C111	27°40'42"	65.00'	286.60'	82.69'	82.69'	S16°45'17"W
C112	20°02'36"	525.00'	183.66'	92.78'	181.72'	S87°14'42"E
C113	12°02'00"	875.00'	183.77'	92.22'	183.43'	S48°35'00"W
C114	53°48'00"	250.00'	234.75'	126.83'	226.22'	S70°22'00"E



**PLAT OF CORRECTION  
PLANTER'S ROUND**



5248 Olde Towne Road, Suite 1  
Williamsburg, Virginia 23188  
(804) 253-0040  
Fax (804) 220-8994

PLAT OF CORRECTION  
PLANTER'S ROUND  
THE  
GOVERNOR'S LAND  
At Two Rivers  
POWhatan District JAMES CITY COUNTY VIRGINIA



No.	DATE	REVISION / COMMENT / NO'E	BY

Drawn by VMB	Drawn
Scale 1"=100'	Date 8/20/1993
Project No. 7173	
Drawing No. 1 of 1	