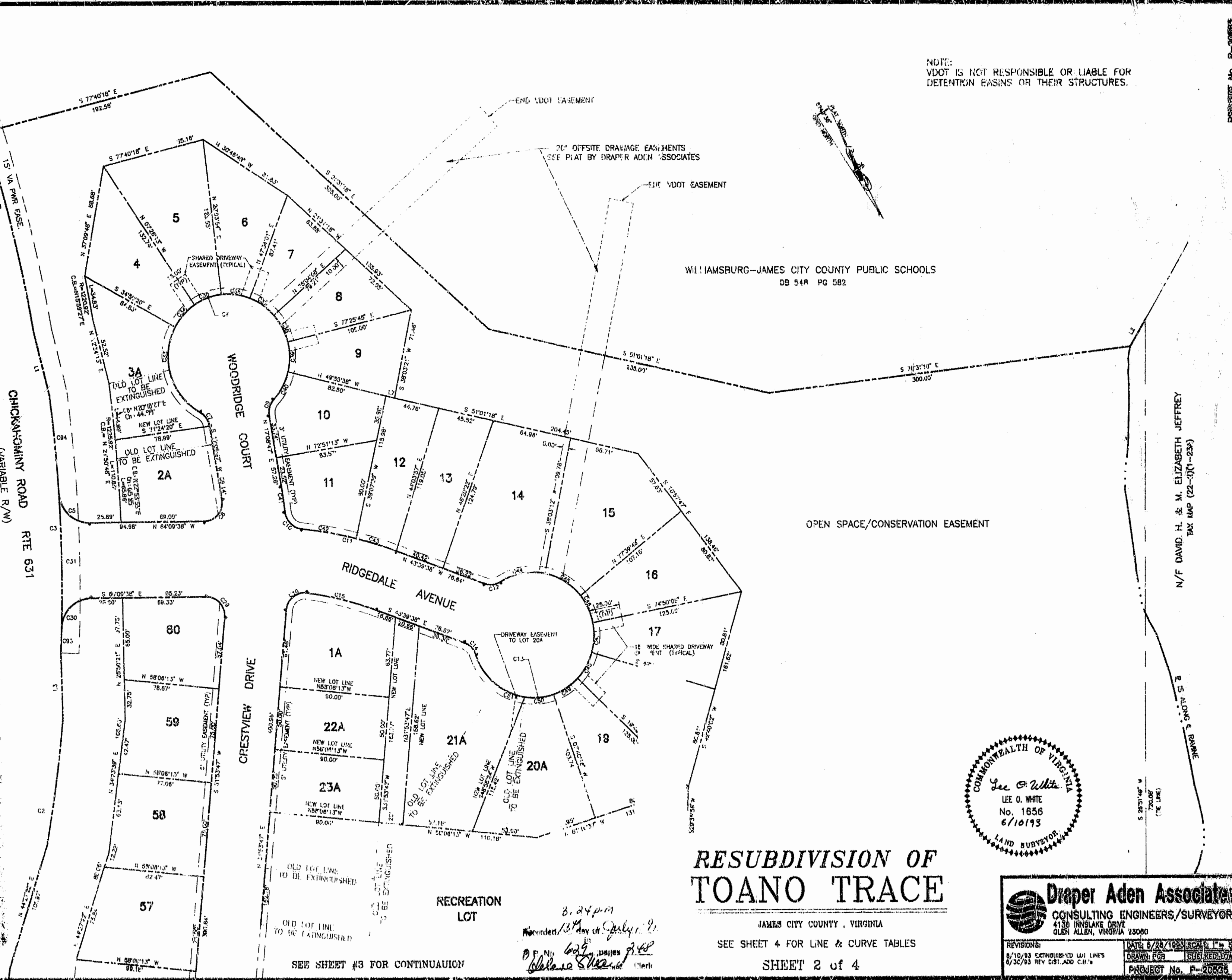
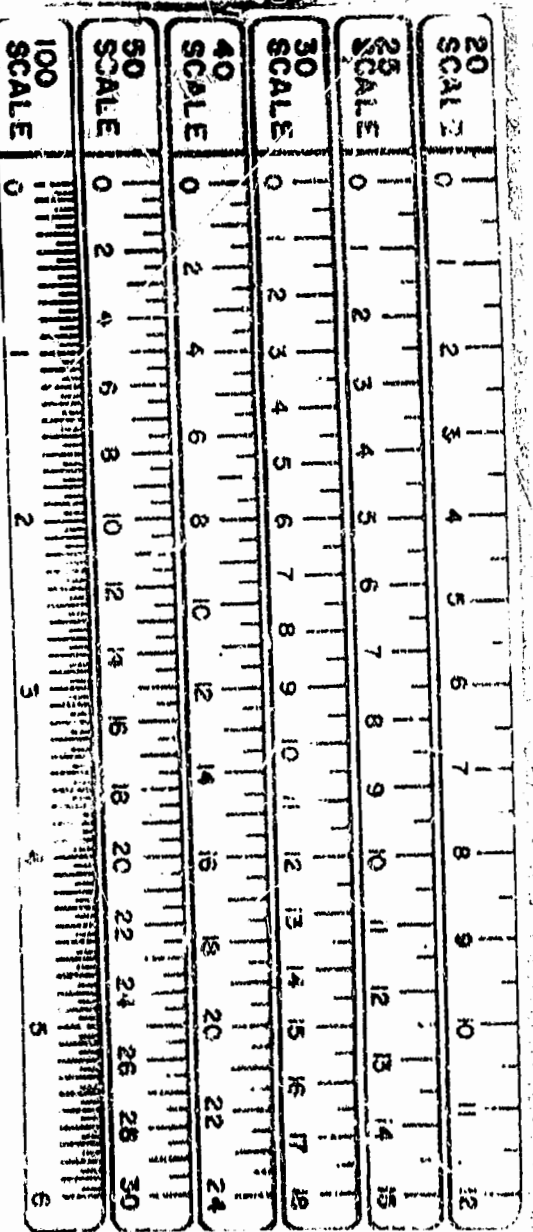


NOTE:
VDOT IS NOT RESPONSIBLE OR LIABLE FOR
DETENTION BASINS OR THEIR STRUCTURES.

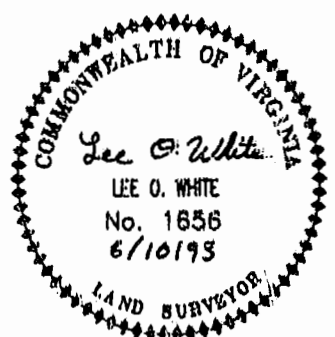


WILLIAMSBURG-JAMES CITY COUNTY PUBLIC SCHOOLS
DB 54R PG 582

OPEN SPACE/CONSERVATION EASEMENT

N/F DAVID H. & M. ELIZABETH JEFFREY
TAX MAP (22-3)(1-23)

R.S. ALONG & BRAWNE



RESUBDIVISION OF TOANO TRACE

JAMES CITY COUNTY, VIRGINIA

SEE SHEET 4 FOR LINE & CURVE TABLES

SHEET 2 of 4

RECREATION
LOT

8.24 p.m.
Recorded 13th day of July 1993
P.F. No. 602
Blaise S. [Signature]

SEE SHEET #3 FOR CONTINUATION

Draper Aden Associates
CONSULTING ENGINEERS/SURVEYORS
4150 INNSLAKE DRIVE
OLEN ALLEN, VIRGINIA 23060

REVISIONS:
8/10/93 EXTINGUISHED LOT LINES
8/30/93 REV. DIST. ADD. C.M.'S

DATE: 6/28/1993 SCALE: 1" = 40'
DRAWN: RFB
PROJECT No. P-20826