

**100' CURVE DATA**

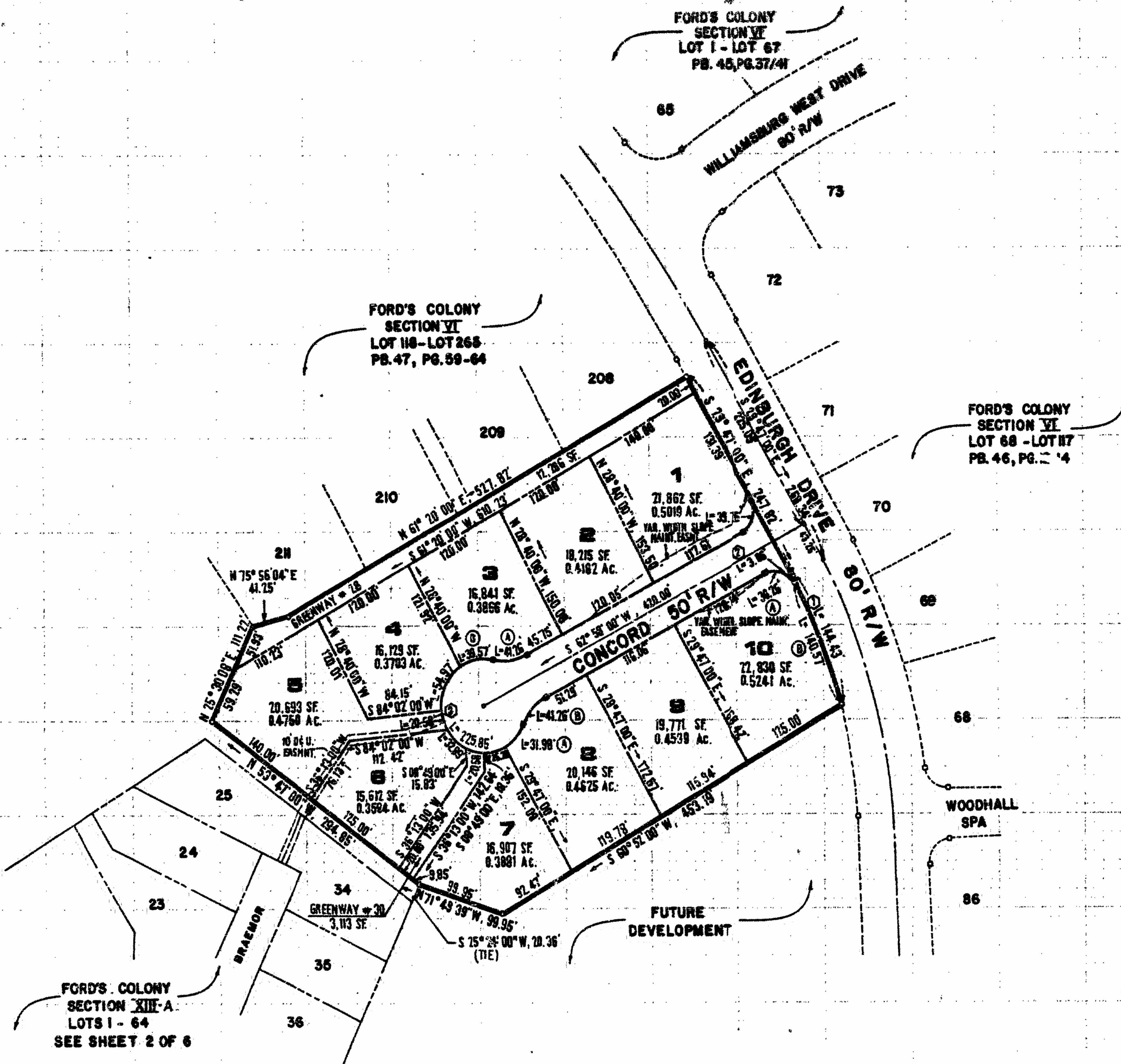
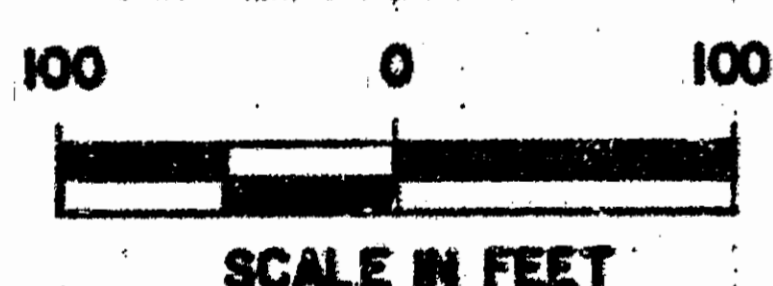
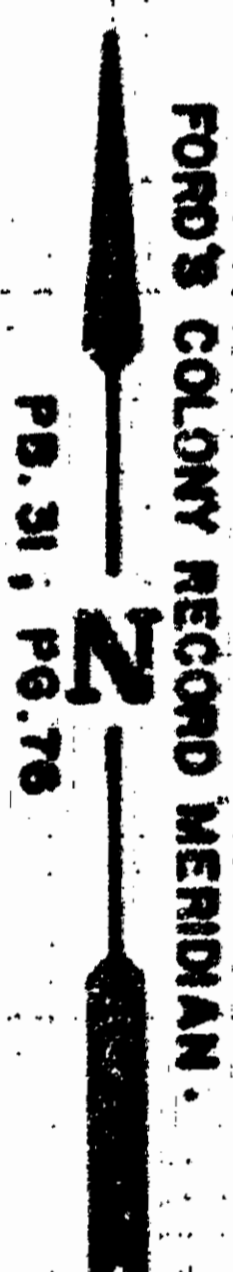
DELTA	RADIUS	LENGTH	TANGENT	CHORD	CHORD BEARING
1 91°07'00"	25.00'	39.76'	25.49'	35.70'	S15°46'30"W
3A 39°24'02"	50.00'	41.26'	21.48'	40.45'	S82°40'01"W
3B 45°20'47"	50.00'	39.57'	20.89'	38.55'	S79°43'39"W
4 62°59'15"	50.00'	54.97'	30.63'	52.24'	S25°31'38"W
5 23°34'41"	50.00'	20.58'	10.44'	20.43'	S17°45'21"E
6 37°41'37"	50.00'	32.89'	17.07'	32.30'	S48°23'30"E
7 28°58'09"	50.00'	25.28'	12.92'	25.01'	N74°42'00"E
8A 36°39'02"	50.00'	31.98'	16.56'	31.44'	N41°53'29"E
8B 39°24'02"	60.00'	41.26'	21.48'	40.45'	N43°15'59"E
10A 87°39'05"	25.00'	38.25'	24.00'	34.62'	S73°12'28"E
10B 14°36'57"	551.06'	140.57'	70.67'	140.19'	S2°04'26"E

**GREENWAY'S CURVE DATA**

NO.	DELTA	RADIUS	LENGTH	TANGENT	CHORD	CHORD BEARING
30	23°34'41"	50.00'	20.58'	10.44'	20.43'	S79°01'39"E

**RIGHT-OF-WAY'S CURVE DATA**

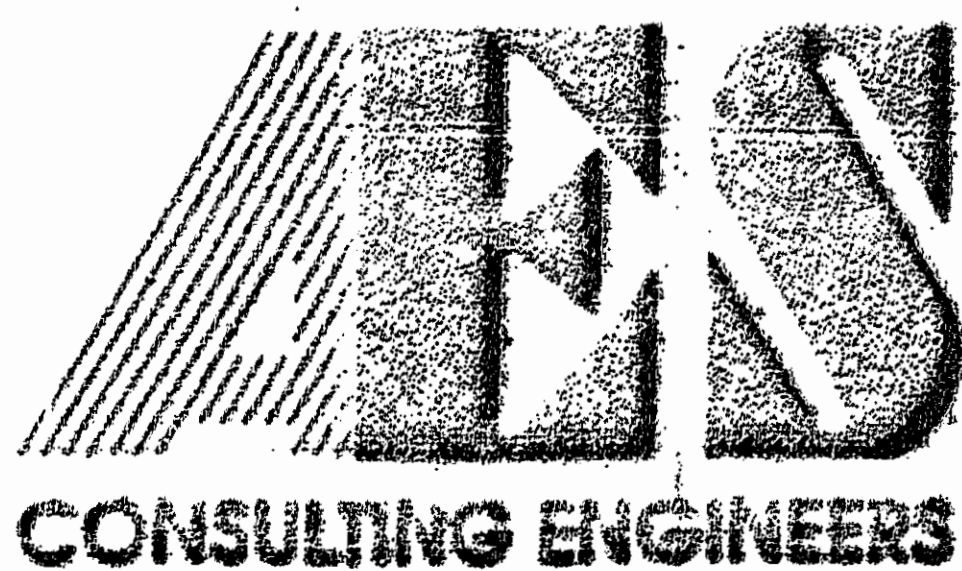
NO.	DELTA	RADIUS	LENGTH	TANGENT	CHORD	CHORD BEARING
1	15°01'02"	551.06'	144.43'	72.63'	144.02'	S22°16'29"E
2	00°24'05"	551.06'	3.86'	1.93'	3.86'	S29°34'59"E
3	258°48'04"	50.00'	225.85'	—	77.27'	N27°02'00"W



**AREA TABULATION**

**SECTION XIII D, LOTS 1-10**

TOTAL AREA OF RESIDENTIAL LOTS	189,006 SF	4.339 AC.
TOTAL AREA OF RIGHT-OF-WAYS	24,882 SF	0.571 AC.
TOTAL AREA OF GREENWAYS	15,319 SF	0.352 AC.
<b>TOTAL AREA OF SECTION XIII D LOTS 1-10</b>	<b>229,207 SF</b>	<b>5.261 AC.</b>
NUMBER OF LOTS	10	
AVERAGE LOT SIZE	18,901 SF	0.433 AC.
LARGEST LOT (# 6)	22,830 SF	0.524 AC.
SMALLEST LOT (# 8)	15,612 SF	0.358 AC.
GROSS LOTS PER ACRE	1.90	



5248 Old Towne Road, Suite 1  
Williamsburg, Virginia 23188  
(804) 253-0040  
Fax (804) 220-8994

**PLAT OF**  
**FORD'S COLONY**  
**@ WILLIAMSBURG**  
**SECTION XIII - D, LOTS 1 - 10**

BERKELEY DISTRICT    JAMES CITY COUNTY    VIRGINIA



NO.	DATE	REVISION / COMMENT / NOTE	BY

Designed	Drawn
LCA/AES	ES
Scale	Plot
1"=100'	1/8"=1'-0"
Project No.	
5852	
Drawing No.	
2 of 2	