

LOT CURVE DATA TABLE

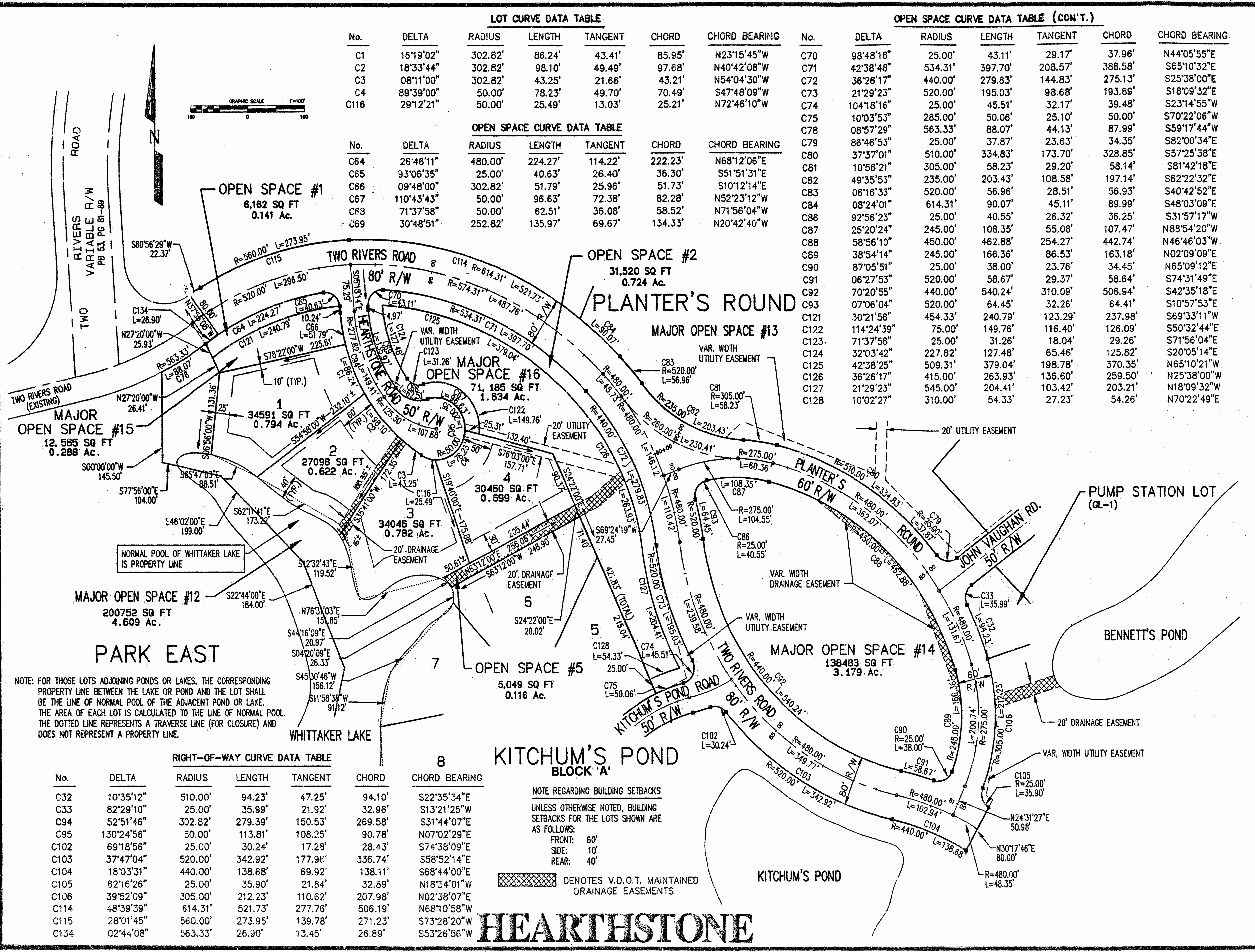
No.	DELTA	RADIUS	LENGTH	TANGENT	CHORD	CHORD BEARING
C1	16°19'02"	302.82'	86.24'	4.341'	85.95'	N23°15'45"W
C2	18°33'44"	302.82'	98.10'	49.49'	97.68'	N40°42'08"W
C3	08°11'00"	302.82'	43.25'	21.66'	43.21'	N54°04'30"W
C4	89°39'00"	50.00'	78.23'	49.70'	70.49'	S47°48'09"W
C116	29°12'21"	50.00'	25.49'	13.03'	25.21'	N72°46'10"W

OPEN SPACE CURVE DATA TABLE (CON'T.)

No.	DELTA	RADIUS	LENGTH	TANGENT	CHORD	CHORD BEARING
C70	98°48'18"	25.00'	43.11'	29.17'	37.96'	N44°05'55"E
C71	42°38'48"	534.31'	397.70'	208.57'	388.58'	S65°10'32"E
C72	36°26'17"	440.00'	279.83'	144.83'	275.13'	S25°38'00"E
C73	21°29'23"	520.00'	195.03'	98.68'	193.89'	S18°09'32"E
C74	104°18'16"	25.00'	45.51'	32.17'	39.48'	S23°14'55"W
C75	10°03'53"	285.00'	50.06'	25.10'	50.00'	S70°22'06"W
C76	08°57'29"	563.33'	88.07'	44.13'	87.99'	S59°17'44"W
C77	86°46'53"	25.00'	37.87'	23.63'	34.35'	S82°00'34"E
C78	37°37'01"	510.00'	334.83'	173.70'	328.85'	S57°25'38"E
C79	10°56'21"	305.00'	58.23'	29.20'	58.14'	S81°42'18"E
C80	49°35'53"	235.00'	203.43'	108.58'	197.14'	S62°22'32"E
C81	08°16'33"	520.00'	56.96'	28.51'	56.93'	S40°42'52"E
C82	08°24'01"	614.31'	90.07'	45.11'	89.99'	S48°03'09"E
C83	92°56'23"	25.00'	40.55'	26.32'	36.25'	S31°57'17"W
C84	25°20'24"	245.00'	108.35'	55.08'	107.47'	N88°54'20"W
C85	58°56'10"	450.00'	462.88'	254.27'	442.74'	N46°46'03"W
C86	38°54'14"	245.00'	166.36'	86.53'	163.18'	N02°09'09"E
C87	87°05'51"	25.00'	38.00'	23.76'	34.45'	N65°09'12"E
C88	06°27'53"	520.00'	58.67'	29.37'	58.64'	S74°31'49"E
C89	70°20'55"	440.00'	540.24'	310.09'	506.94'	S42°35'18"E
C90	07°06'04"	520.00'	64.45'	32.26'	64.41'	S10°57'53"E
C91	30°21'58"	454.33'	240.79'	123.29'	237.98'	S69°33'11"W
C92	114°24'39"	75.00'	149.76'	116.40'	126.09'	S50°32'44"E
C93	71°37'58"	25.00'	31.26'	18.04'	29.26'	S71°56'04"E
C121	32°03'42"	227.82'	127.48'	65.46'	125.82'	S20°05'14"E
C122	42°38'25"	509.31'	379.04'	198.78'	370.35'	N65°10'21"W
C123	36°26'17"	415.00'	263.93'	136.60'	259.50'	N25°38'00"W
C124	21°29'23"	545.00'	204.41'	103.42'	203.21'	N18°09'32"W
C125	10°02'27"	310.00'	54.33'	27.23'	54.26'	N70°22'49"E

OPEN SPACE CURVE DATA TABLE

No.	DELTA	RADIUS	LENGTH	TANGENT	CHORD	CHORD BEARING
C64	26°46'11"	480.00'	224.27'	114.22'	222.23'	N68°12'06"E
C65	93°06'35"	25.00'	40.63'	26.40'	36.30'	S51°51'31"E
C66	09°48'00"	302.82'	51.79'	25.96'	51.73'	S10°12'14"E
C67	110°43'43"	50.00'	96.63'	72.38'	82.28'	N52°23'12"W
C68	71°37'58"	50.00'	62.51'	36.08'	58.52'	N71°56'04"W
C69	30°48'51"	252.82'	135.97'	69.67'	134.33'	N20°42'40"W



NOTE: FOR THOSE LOTS ADJOINING PONDS OR LAKES, THE CORRESPONDING PROPERTY LINE BETWEEN THE LAKE OR POND AND THE LOT SHALL BE THE LINE OF NORMAL POOL OF THE ADJACENT POND OR LAKE. THE AREA OF EACH LOT IS CALCULATED TO THE LINE OF NORMAL POOL. THE DOTTED LINE REPRESENTS A TRAVERSE LINE (FOR CLOSURE) AND DOES NOT REPRESENT A PROPERTY LINE.

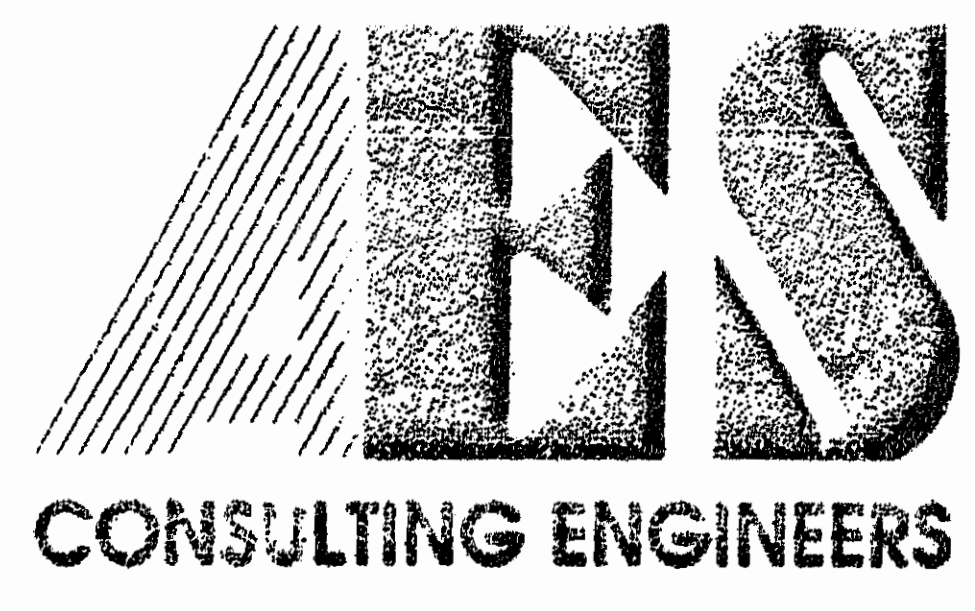
RIGHT-OF-WAY CURVE DATA TABLE

No.	DELTA	RADIUS	LENGTH	TANGENT	CHORD	CHORD BEARING
C32	10°35'12"	510.00'	94.23'	47.25'	94.10'	S22°35'34"E
C33	82°29'10"	25.00'	35.99'	21.92'	32.96'	S13°21'25"W
C94	52°51'46"	302.82'	279.39'	150.53'	269.58'	S31°44'07"E
C95	130°24'56"	50.00'	113.81'	108.25'	90.78'	N07°02'29"E
C102	69°18'56"	25.00'	30.24'	17.28'	28.43'	S74°38'09"E
C103	37°47'04"	520.00'	342.92'	177.96'	336.74'	S58°52'14"E
C104	18°03'31"	440.00'	138.68'	69.92'	138.11'	S68°44'00"E
C105	82°16'26"	25.00'	35.90'	21.84'	32.89'	N18°34'01"W
C106	39°52'09"	305.00'	212.23'	110.62'	207.98'	N02°38'07"E
C114	48°39'39"	614.31'	521.73'	277.76'	506.19'	N68°10'58"W
C115	28°01'45"	560.00'	273.95'	139.78'	271.23'	S73°28'20"W
C134	02°44'08"	563.33'	26.90'	13.45'	26.89'	S53°26'56"W

NOTE REGARDING BUILDING SETBACKS
UNLESS OTHERWISE NOTED, BUILDING SETBACKS FOR THE LOTS SHOWN ARE AS FOLLOWS:
FRONT: 60'
SIDE: 10'
REAR: 40'

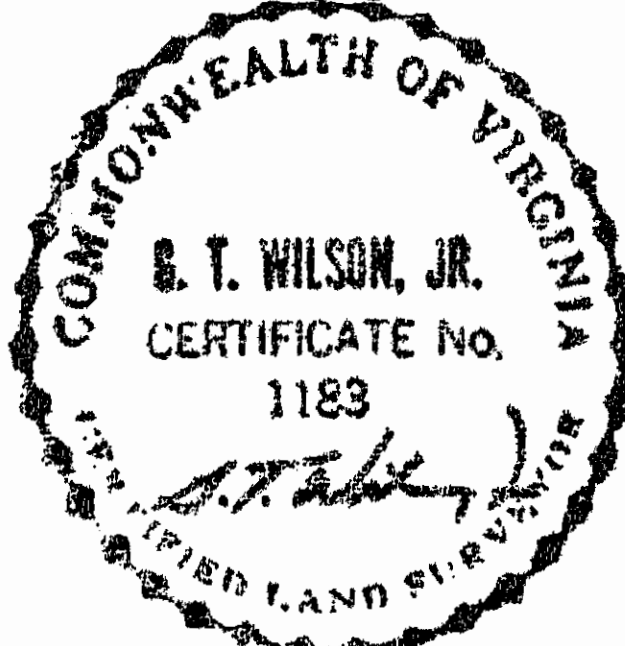
☒ DENOTES V.D.O.T. MAINTAINED DRAINAGE EASEMENTS

HEARTHSTONE



5248 Olde Towne Road, Suite 1
Williamsburg, Virginia 23188
(804) 253-0040
Fax (804) 220-8994

PLAT OF
HEARTHSTONE
THE
GOVERNOR'S LAND
At Two Rivers
JAMES CITY COUNTY
VIRGINIA



No.	DATE	REVISION / COMMENT / NOTE	BY

Designed VMB	Drawn
Scale 1"=100'	Date 4/23/93
Project No. 7173	
Drawing No. 3 of 5	