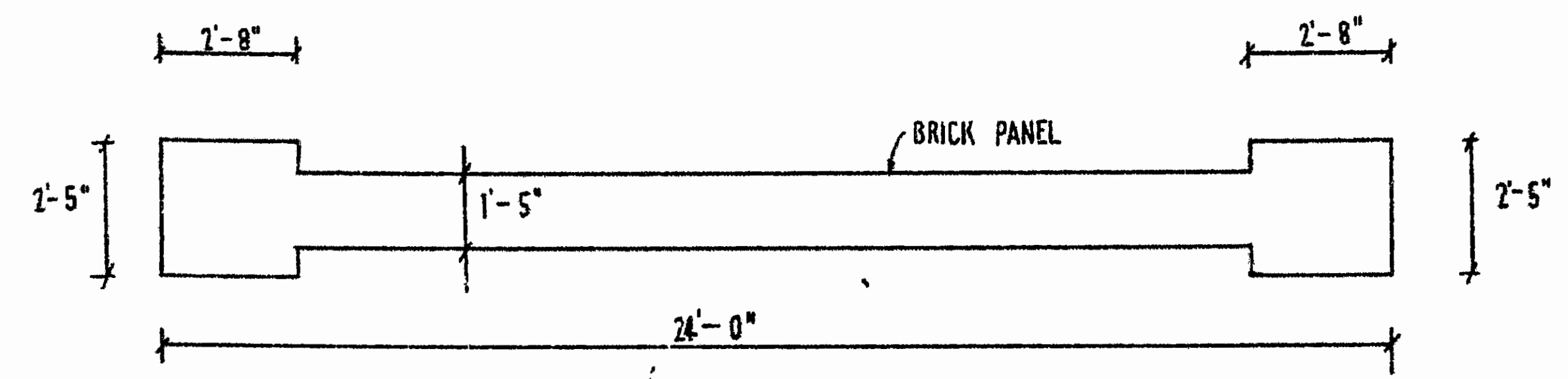
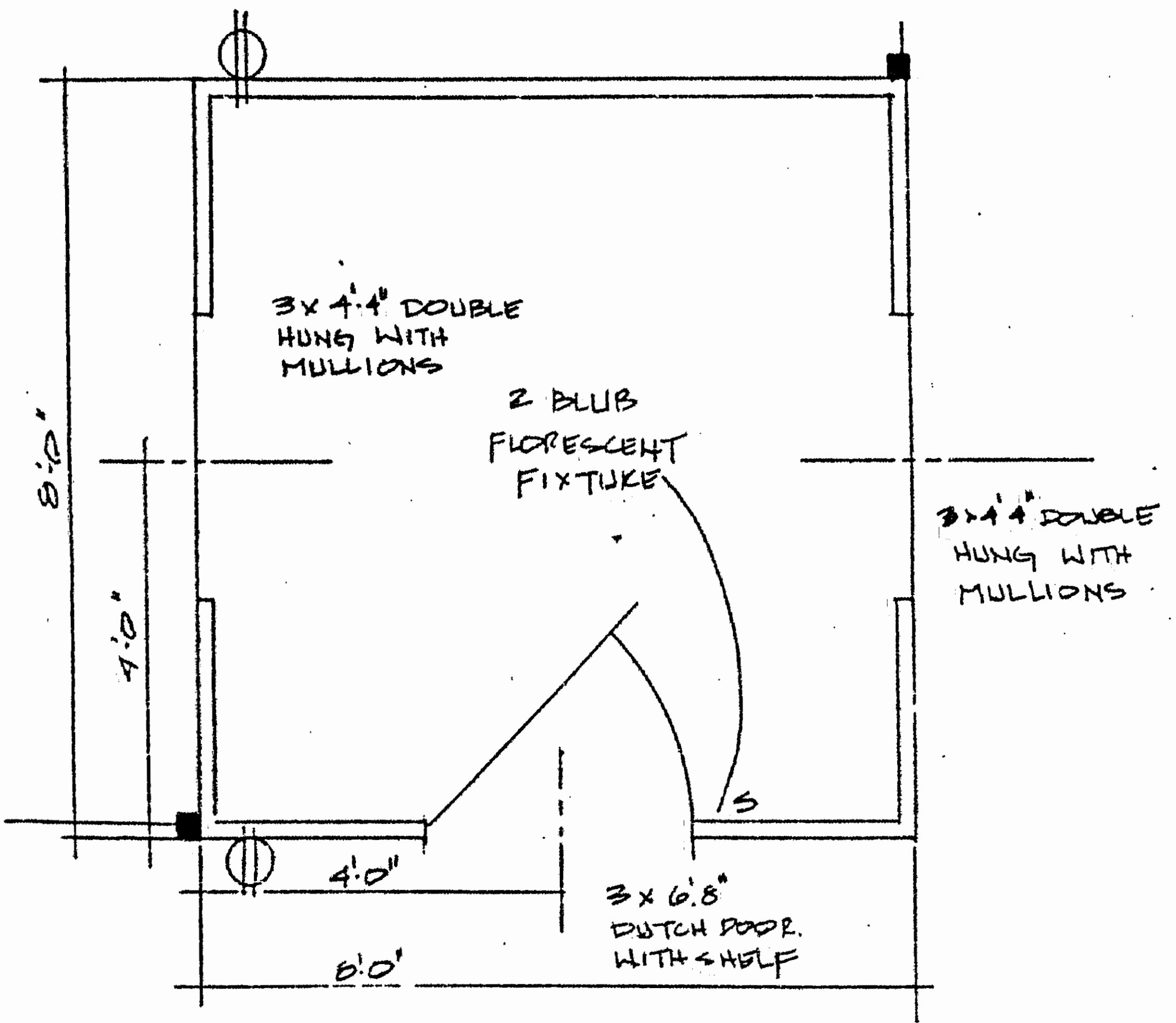


**FOUNTAIN**  
COMMON ELEMENT



**ENTRANCE WALL**  
COMMON ELEMENT  
(TWO PROVIDED)



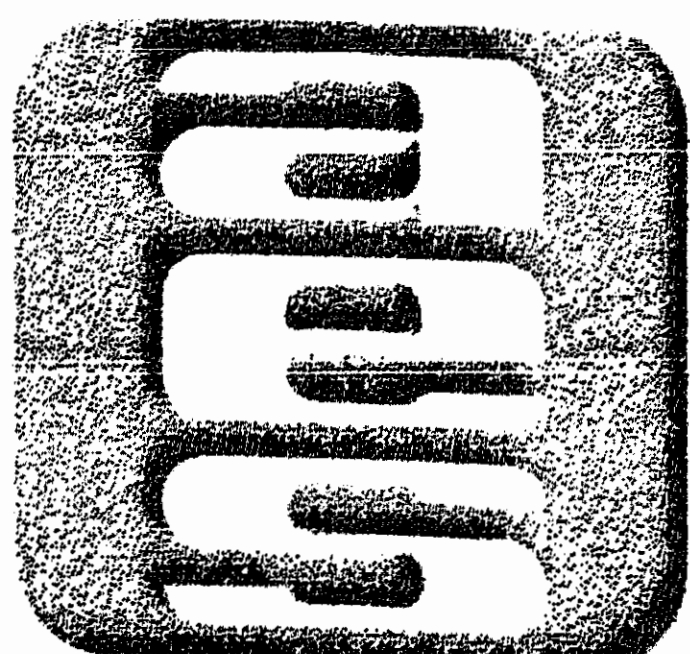
**OUT BUILDING PLAN**  
COMMON ELEMENT  
TWO PROVIDED

NOTE: LOCATIONS AND DIMENSIONS OF PAVILIONS, GAZEBOES, AND OTHER SIMILAR RECREATIONAL AND LANDSCAPE AMENITIES ARE APPROXIMATE ONLY. THE DECLARANT RESERVES THE RIGHT TO MODIFY SAME FOR PURPOSES OF ENGINEERING AND AESTHETIC CONSIDERATIONS.

**ARCHITECT'S CERTIFICATE**

I HERBY CERTIFY THAT THIS IS CORRECT AND ACCURATE PLAN, THAT THIS PLAN IS IN COMPLIANCE WITH VIRGINIA CODE ANN. SUBSECTIONS 55-79.58 (b) AND (e), AND THAT THE UNITS DEPICTED HEREON HAVE BEEN SUBSTANTIALLY COMPLETED.

*Peter H. Hand*  
PETER H. HAND, A.I.A. DATE



**EXHIBIT A-3**

**AES**, a professional corporation  
5248 Olde Towne Road, Suite 1  
Williamsburg, Va. 23185  
804-253-0040  
Engineering, Planning, Surveying

**PLAT OF CONDOMINIUM  
THE MANOR CLUB  
AT FORD'S COLONY  
PHASE ONE**

DECLARANT: REALTEC INCORPORATED

POWhatan DISTRICT JAMES CITY COUNTY VIRGINIA

12:16 p.m.

Recorded	17th day of May 1993		
P. B. No.	618		
Pages	744		
Clerk	<i>Richard</i>		
No.	DATE	REVISION / COMMENT / NOTE	BY
2	4/20/93	REVISED UNIT NUMBERS	STL
1	3/5/93	REVISED TITLE	GTW

Designed	Drawn
NONE	VMB
Scale	Date
NONE	MAR. 1993
Project No.	
7739	
Drawing No.	
9 of 9	

