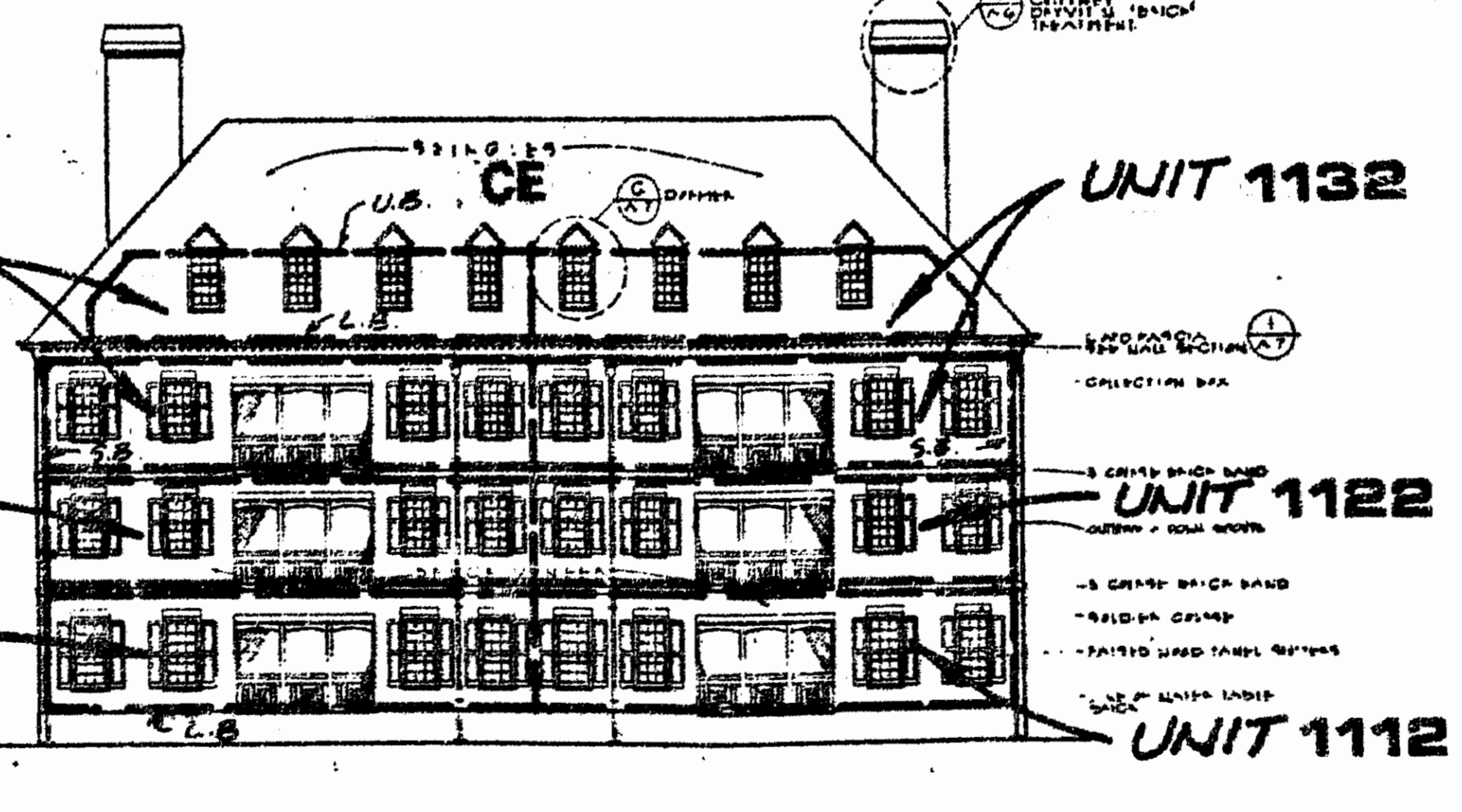
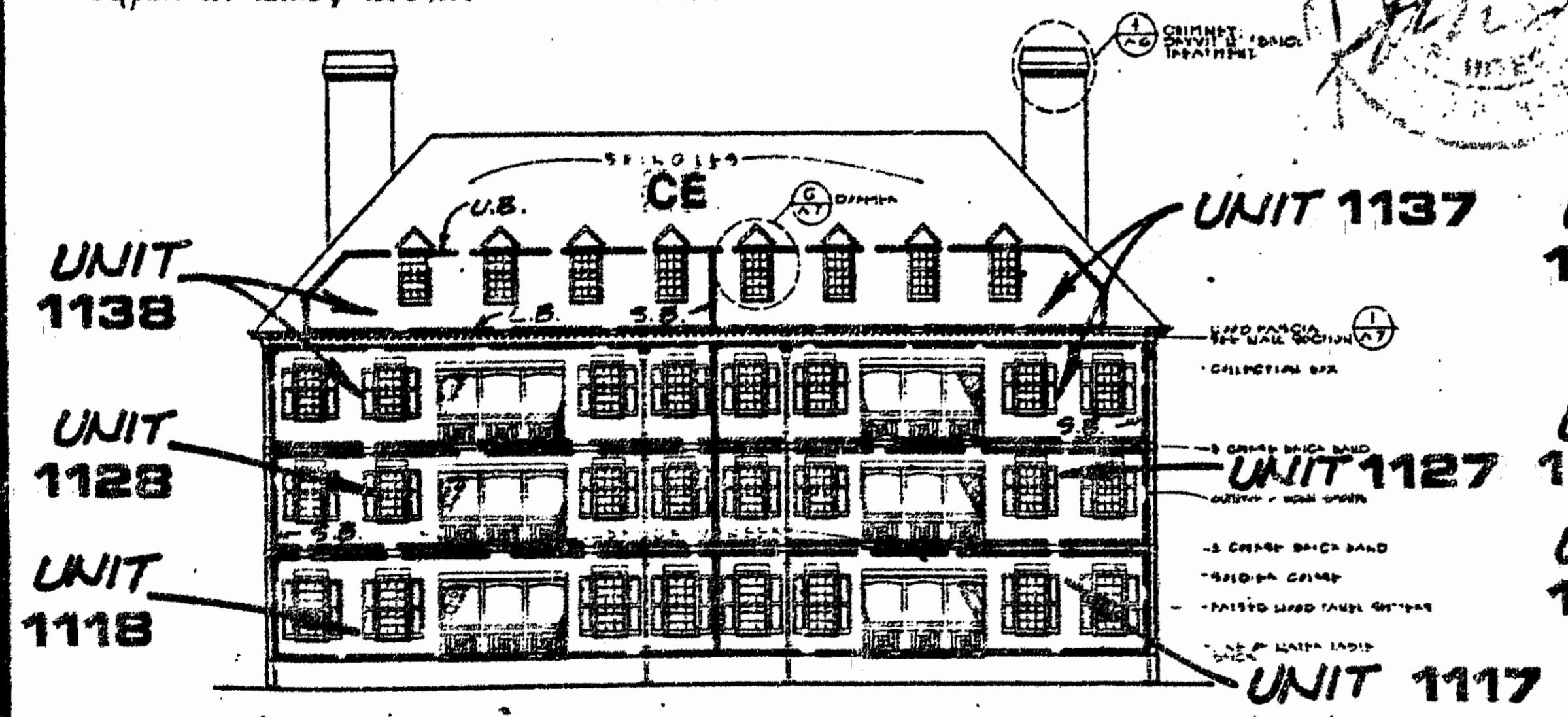


**LEGEND**  
 L.B. - LOWER BOUNDARY  
 S.B. - SIDE BOUNDARY  
 U.B. - UPPER BOUNDARY  
 CE - COMMON ELEMENT  
 LCE - LIMITED COMMON ELEMENT

**ARCHITECT'S CERTIFICATE**

I HERBY CERTIFY THAT THIS IS CORRECT AND ACCURATE PLAN, THAT THIS PLAN IS IN COMPLIANCE WITH VIRGINIA CODE ANN. SUBSECTIONS 55-79.58 (b) AND (e), AND THAT THE UNITS DEPICTED HEREON HAVE BEEN SUBSTANTIALLY COMPLETED.  
 PETER H. HAND, A.T.A. DATE 7/11/93



**EXHIBIT 4-3**  
**AES**, a professional corporation  
 5248 Olde Towne Road, Suite 1  
 Williamsburg, Va. 23185  
 804-253-0040  
 Engineering, Planning, Surveying

**PLAT OF CONDOMINIUM**  
**THE MANOR CLUB**  
**AT FORD'S COLONY**  
 PHASE ONE  
 DECLARANT: REALTEC INCORPORATED  
 POWHATAN DISTRICT JAMES CITY COUNTY VIRGINIA

DESIGNED	12/16/91		
DRAWN	1/17/92		
SCALE	AS SHOWN		
DATE	MAY 1993		
PROJECT NO.	7739		
DRAWING NO.	7 of 9		
NO.	DATE	REVISION / COMMENT / NOTE	BY
2	4/20/93	REVISED UNIT NUMBERS	GTI
1	3/5/93	REVISED TITLE	GTI