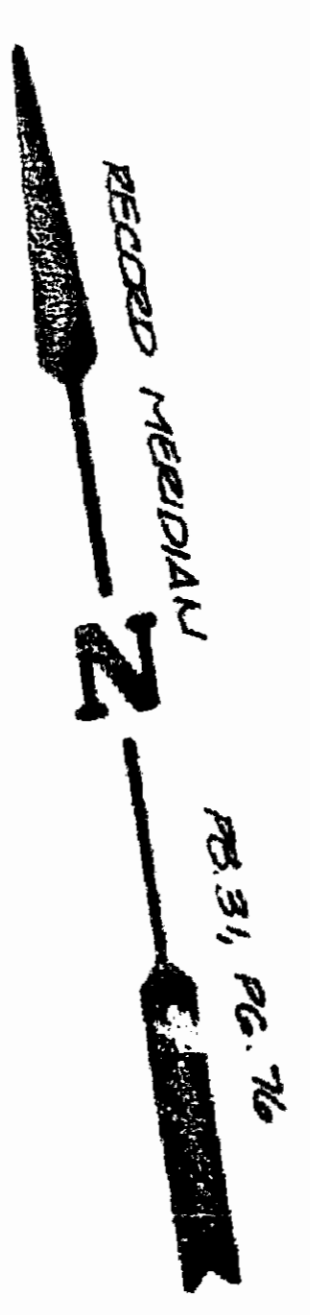
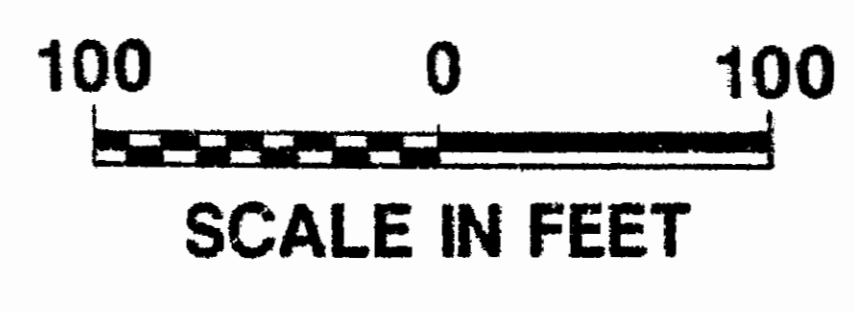
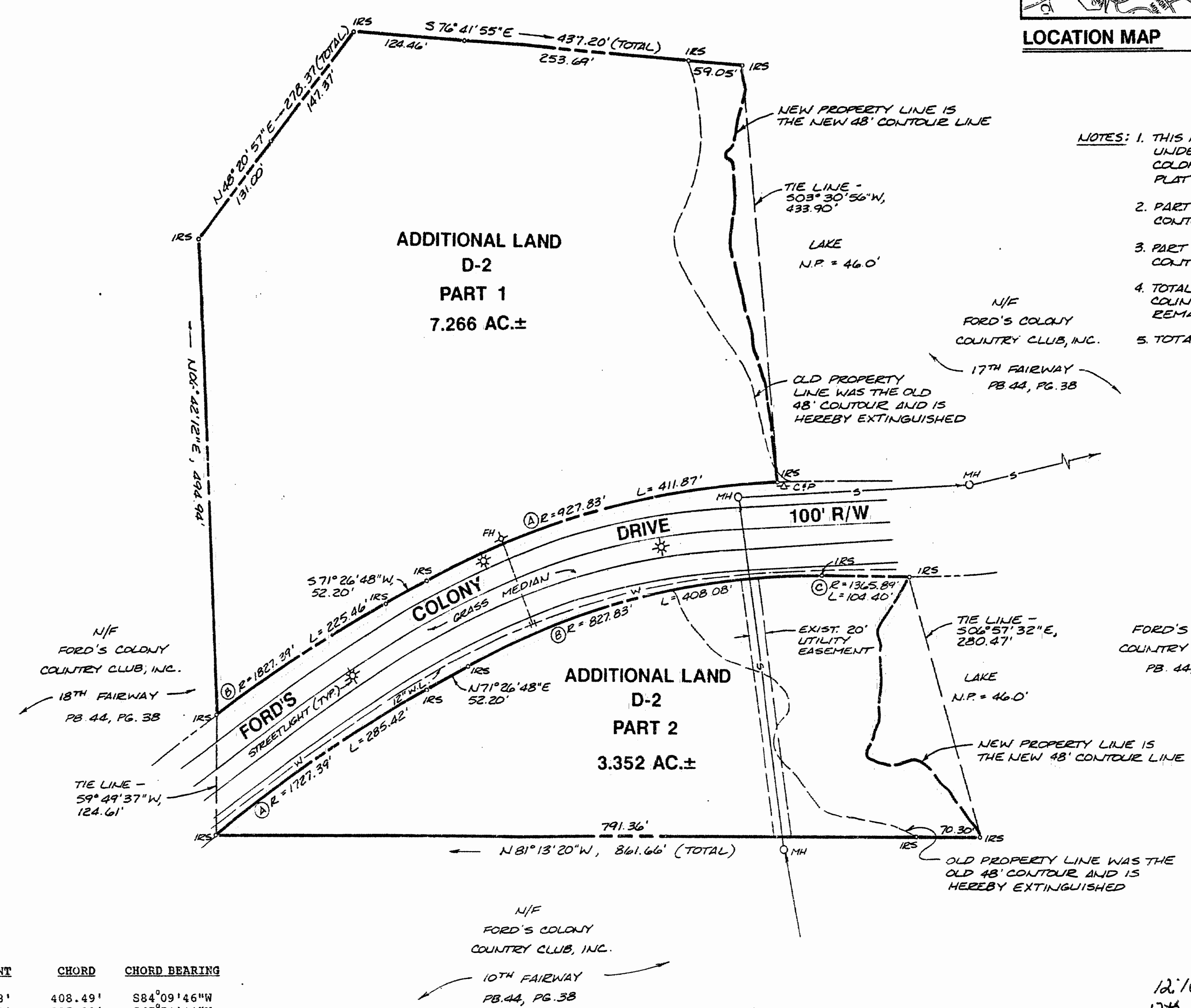


LOCATION MAP SCALE: 1"=2000'



N/F
FORD'S COLONY
COUNTRY CLUB, INC.
PB. 44, PG. 38



- NOTES: 1. THIS IS A RESIDUE OF A PORTION OF THE UNDEVELOPED PROPERTY OWNED BY FORD'S COLONY OF WILLIAMSBURG AS SHOWN ON PLAT RECORDED IN PB. 44, PG. 38.
2. PART 1 - AREA BETWEEN OLD AND NEW 48' CONTOUR LINE IS 0.05 AC.±
3. PART 2 - AREA BETWEEN OLD AND NEW 48' CONTOUR LINE IS 0.77 AC.±
4. TOTAL AREA DEDUCTION FROM FORD'S COLONY COUNTRY CLUB, INC. IS 0.82 AC.± REMAINING AREA IS 178.03 AC.±
5. TOTAL AREA PART 1 AND 2 = 10.618 AC.±

CURVE TABLE

MARK	DELTA	RADIUS	LENGTH	TANGENT	CHORD	CHORD BEARING
PART 1-A	25°26'02"	927.83'	411.87'	209.38'	408.49'	S84°09'46"W
PART 1-B	07°04'09"	1827.39'	225.46'	112.88'	225.32'	S67°54'44"W
PART 2-A	09°28'02"	1727.39'	285.42'	143.04'	285.10'	N66°42'47"E
PART 2-B	28°14'37"	827.83'	408.08'	208.27'	403.96'	N85°34'04"E
PART 2-C	04°22'45"	1365.89'	104.40'	52.22'	104.37'	S82°30'03"E

12:16 p.m.
Received 17th May 1993
618
W. G. [Signature]
Clerk

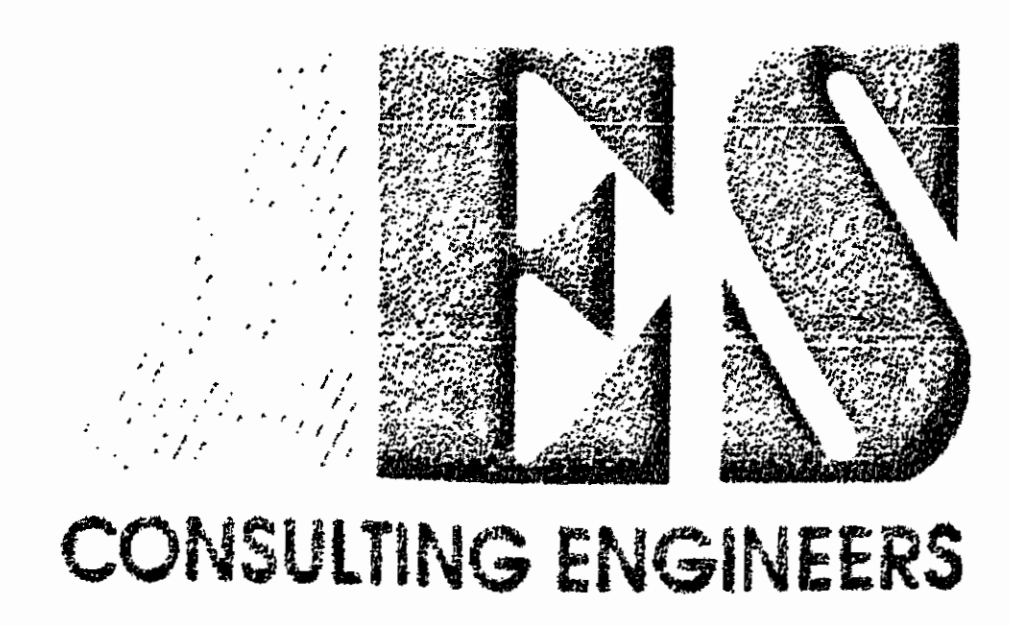


EXHIBIT A-2
5248 Olde Towne Road, Suite 1
Williamsburg, Virginia 23188
(804) 253-0040
Fax (804) 220-8994

PLAT OF CONDOMINIUM
**THE MANOR CLUB
AT FORD'S COLONY**
DECLARANT: REALTEC INCORPORATED
JAMES CITY COUNTY POWHATAN DISTRICT VIRGINIA



No.	DATE	REVISION / COMMENT / NOTE	BY
2	4/20/93	REVISED UNIT NUMBERS	GTW
1	3/5/93	REVISED TITLE	GTW

Designed SOW/JSB	Drawn RMJ
Scale 1"=100'	Date MAR., 1993
Project No. 7739	
Drawing No. 2 of 9	

