

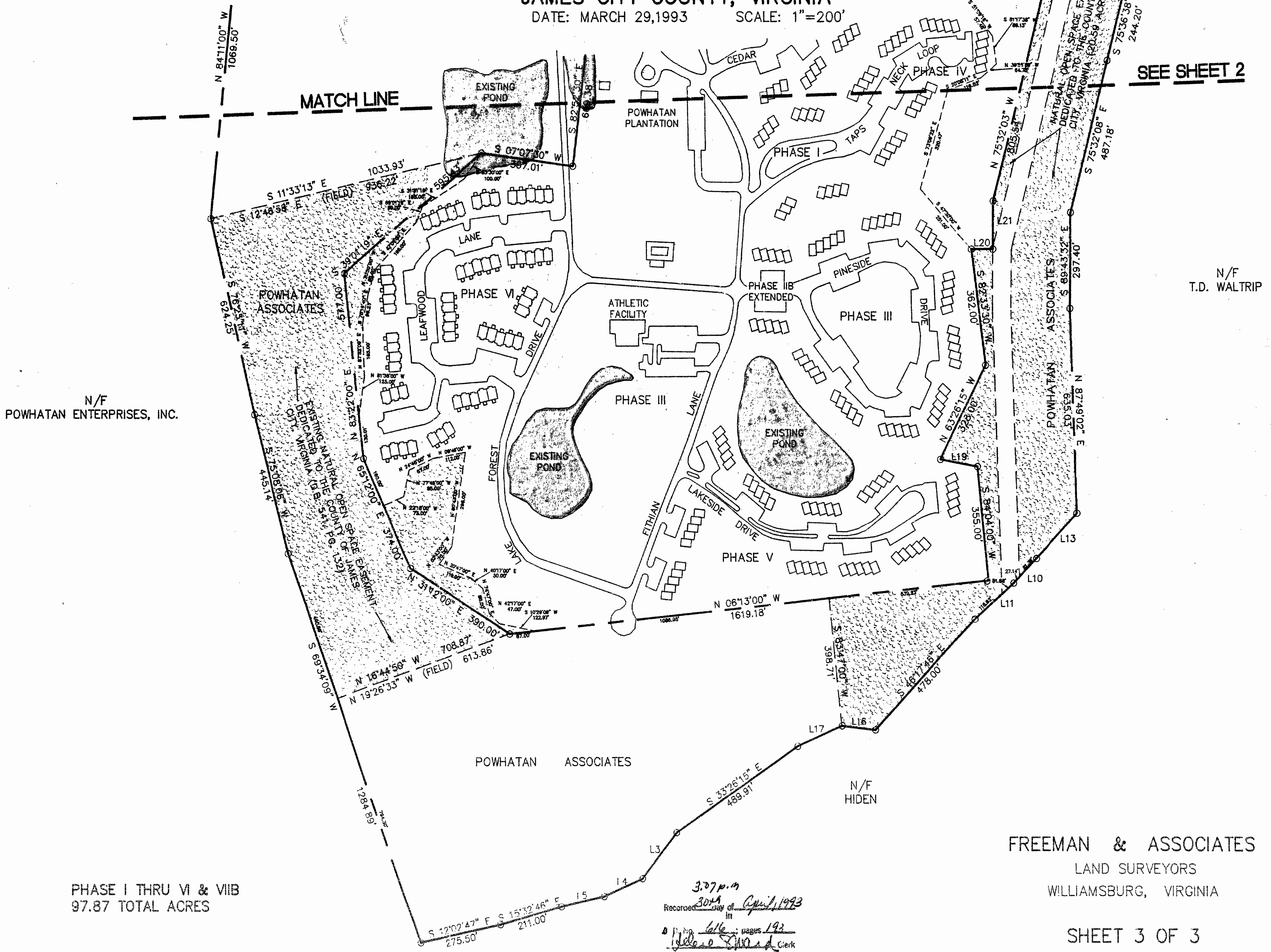
# POWHATAN PLANTATION

## PHASE VIIIB

AND PLAT OF CORRECTION AND VACATION OF POWHATAN PLANTATION PHASE VIA  
PROPERTY LINES AND UNITS 286-320 INCLUSIVE

JAMES CITY COUNTY, VIRGINIA

DATE: MARCH 29, 1993 SCALE: 1"=200'



SEE SHEET 2

N/F  
T.D. WALTRIP

N/F  
POWHATAN ENTERPRISES, INC.

POWHATAN ASSOCIATES

N/F  
HIDDEN

FREEMAN & ASSOCIATES

LAND SURVEYORS  
WILLIAMSBURG, VIRGINIA

PHASE I THRU VI & VIIIB  
97.87 TOTAL ACRES

307 p.m.  
 Recorded 3024 day of April 1993  
 111  
 P. No. 666; pages 192  
 H. H. Clerk

SHEET 3 OF 3

