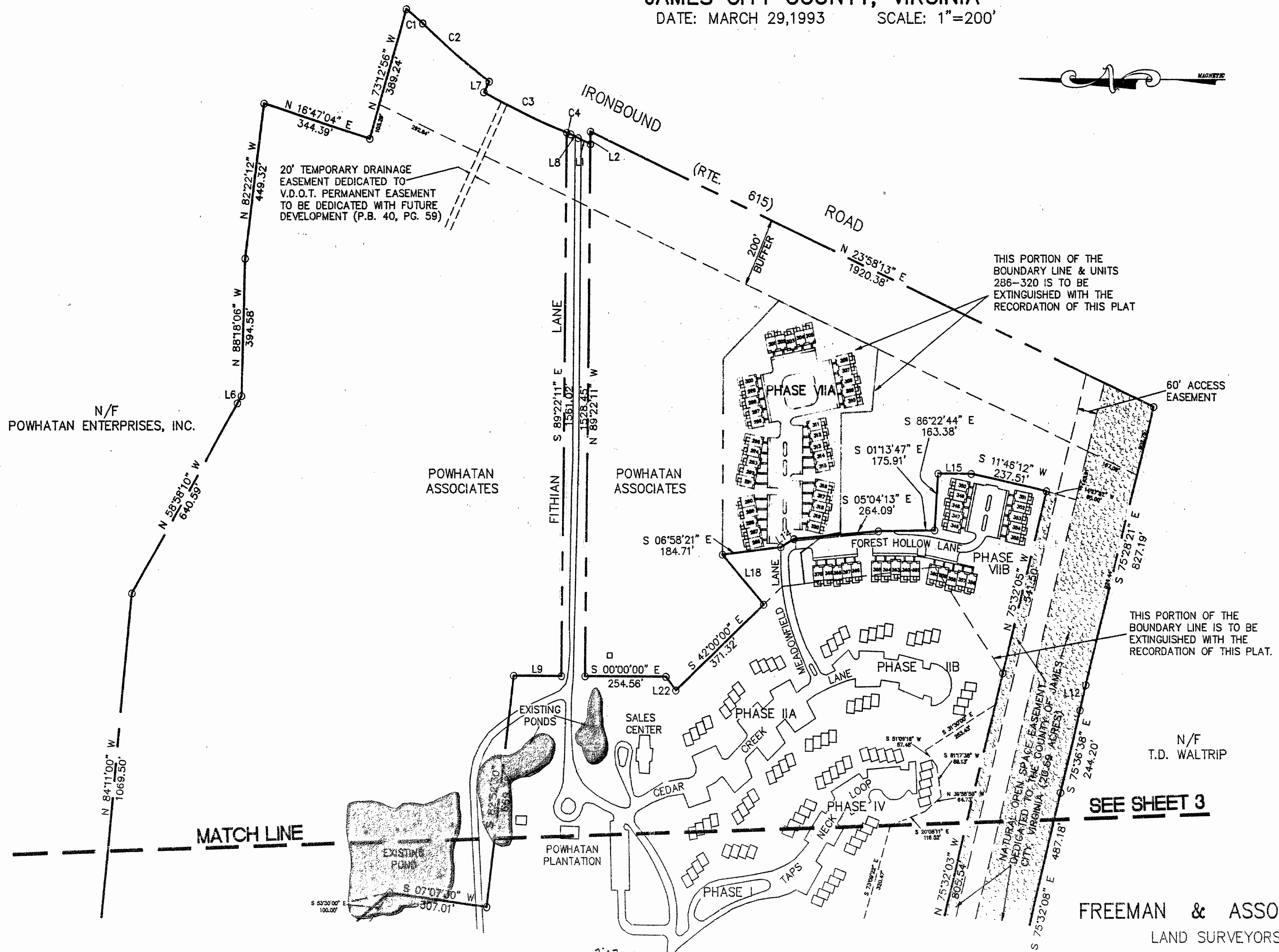


# POWHATAN PLANTATION PHASE VII B

AND PLAT OF CORRECTION AND VACATION OF POWHATAN PLANTATION PHASE VIA  
PROPERTY LINES AND UNITS 286-320 INCLUSIVE

JAMES CITY COUNTY, VIRGINIA

DATE: MARCH 29, 1993 SCALE: 1"=200'



N/F  
POWHATAN ENTERPRISES, INC.

POWHATAN ASSOCIATES

POWHATAN ASSOCIATES

N/F  
T.D. WALTRIP

**SEE SHEET 3**

**FREEMAN & ASSOCIATES**  
LAND SURVEYORS  
WILLIAMSBURG, VIRGINIA

3:07 p.m.  
Recorded in Book 616 of April 1993  
in pages 193  
William S. ... Clerk

PHASE I THRU VI & VII B  
97.87 TOTAL ACRES

SHEET 2 OF 3

