

LOT CURVE DATA

NO.	DELTA	RADIUS	ARC	TANGENT	CHORD	CHORD BEARING
L1	10°34'30"	951.06'	101.71'	51.00'	101.57'	S07°19'24"E
L2	01°09'29"	2208.41'	44.64'	22.32'	44.64'	S02°36'45"E
L3	02°12'33"	2208.41'	85.15'	42.58'	85.15'	S04°17'45"E
L4	08°43'02"	25.00'	38.71'	24.45'	34.96'	S38°57'29"W
L5	06°22'00"	108.19'	163.08'	101.54'	148.08'	N53°30'00"W
L6	11°29'23"	50.00'	10.03'	5.03'	10.01'	N04°34'19"W
L7	29°55'12"	50.00'	26.11'	13.36'	25.81'	N16°07'58"E
L8	09°55'35"	50.00'	52.30'	28.82'	49.94'	N01°07'47"E
L9	26°58'00"	50.00'	25.28'	12.32'	25.01'	N43°19'00"W
L10	23°34'41"	50.00'	20.58'	10.44'	20.43'	N69°35'21"W
L11	28°57'18"	50.00'	25.27'	12.91'	25.00'	S84°08'40"W
L12	40°38'00"	50.00'	35.46'	18.51'	34.72'	S49°21'00"W
L13	32°14'25"	50.00'	28.13'	14.45'	27.77'	S12°54'47"W
L14	48°31'09"	50.00'	42.34'	22.53'	41.09'	S27°28'00"E
L15	41°24'35"	50.00'	36.14'	18.90'	35.36'	S31°01'17"E
L16	07°08'04"	158.19'	19.70'	9.86'	19.68'	S13°52'52"E
L17	32°19'06"	158.19'	89.23'	45.84'	88.05'	S41°02'08"E
L18	07°15'07"	158.19'	20.02'	10.02'	20.01'	S60°49'15"E
L19	16°01'55"	158.19'	49.78'	25.10'	49.58'	S73°27'46"E
L20	14°12'17"	158.19'	39.22'	19.71'	39.12'	S89°34'56"E
L21	08°43'02"	25.00'	38.71'	24.45'	34.96'	S52°19'29"E
L22	03°15'19"	2208.41'	125.47'	62.75'	125.45'	S09°35'38"E
L23	03°14'37"	2208.41'	125.02'	62.53'	125.00'	S13°21'43"E
L24	02°09'36"	2208.41'	83.26'	41.63'	83.29'	S16°03'50"E
L25	07°14'38"	25.00'	38.07'	23.83'	34.49'	S26°28'41"W
L26	08°39'44"	159.82'	25.67'	12.86'	25.65'	S65°46'18"W
L27	75°07'44"	25.00'	32.78'	19.23'	30.48'	N80°59'52"W
L28	41°24'35"	50.00'	36.14'	18.90'	35.36'	N22°43'43"W
L29	52°49'35"	50.00'	46.10'	24.85'	44.48'	N28°26'13"W
L30	29°34'41"	50.00'	20.58'	10.44'	20.43'	N66°38'21"W
L31	39°29'37"	50.00'	34.46'	17.95'	33.79'	S81°49'30"W
L32	23°34'41"	50.00'	20.58'	10.44'	20.43'	S50°17'21"W
L33	72°15'36"	50.00'	63.06'	36.50'	58.96'	S02°22'12"W
L34	51°04'59"	50.00'	44.58'	23.89'	43.12'	S59°18'05"E
L35	41°24'35"	50.00'	36.14'	18.90'	35.36'	S64°08'17"E
L36	79°07'44"	25.00'	32.78'	19.23'	30.48'	S05°52'08"E
L37	09°19'43"	169.82'	27.65'	13.86'	27.62'	S27°01'52"W
L38	23°29'12"	169.82'	69.61'	35.30'	69.13'	S10°37'25"W
L39	31°50'25"	50.00'	27.79'	14.26'	27.43'	S14°48'02"W
L40	12°48'05"	50.00'	11.19'	5.62'	11.16'	S24°18'42"W
L41	57°34'28"	50.00'	50.24'	27.47'	48.16'	S10°53'05"E
L42	23°34'41"	50.00'	20.58'	10.44'	20.43'	S51°27'39"E
L43	61°27'00"	50.00'	53.63'	29.72'	51.09'	N86°01'30"E
L44	50°31'00"	50.00'	44.08'	23.58'	42.67'	N30°02'30"E
L45	26°00'00"	50.00'	22.68'	11.54'	22.50'	N08°13'00"W
L46	26°58'15"	50.00'	23.54'	11.99'	23.32'	N34°42'08"W
L47	64°06'31"	50.00'	55.95'	31.31'	53.07'	N16°08'00"W
L48	54°10'45"	119.82'	113.30'	61.29'	109.13'	N43°00'40"E
L49	92°41'27"	25.00'	40.44'	26.20'	36.18'	S63°33'16"E

RIGHT-OF-WAY CURVE DATA

NO.	DELTA	RADIUS	ARC	TANGENT	CHORD	CHORD BEARING
R1	12°43'58"	951.06'	122.46'	61.48'	122.21'	S08°23'59"E
R2	15°10'33"	2208.41'	584.94'	294.19'	583.23'	S09°37'16"E
R3	262°49'00"	50.00'	229.35'	114.68'	75.00'	N79°41'00"E
R4	06°22'00"	108.19'	163.08'	101.54'	148.08'	N53°30'00"W
R5	262°49'00"	50.00'	229.35'	114.68'	75.00'	N46°34'00"E
R6	32°48'55"	169.82'	169.82'	97.26'	95.94'	N15°17'16"E
R7	258°54'39"	50.00'	225.94'	112.97'	77.21'	S81°15'59"W

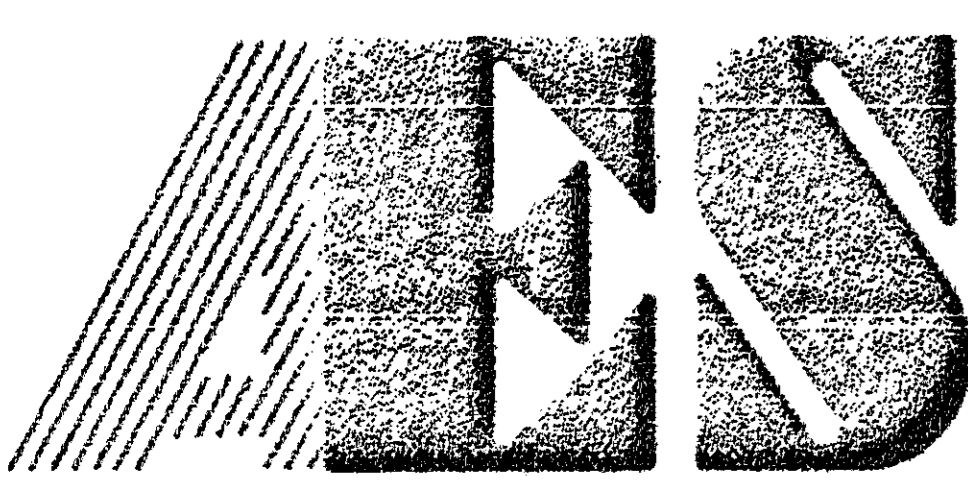
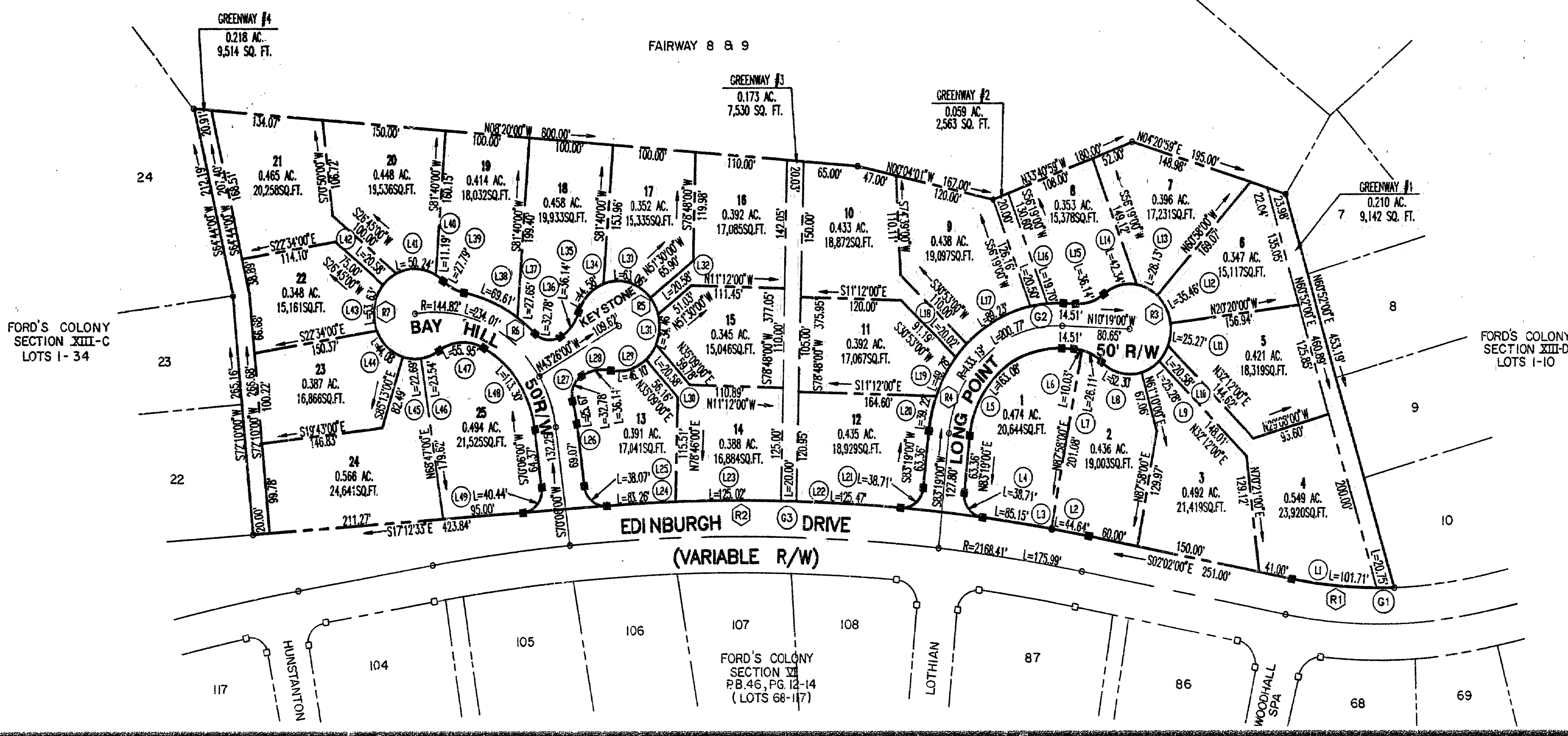
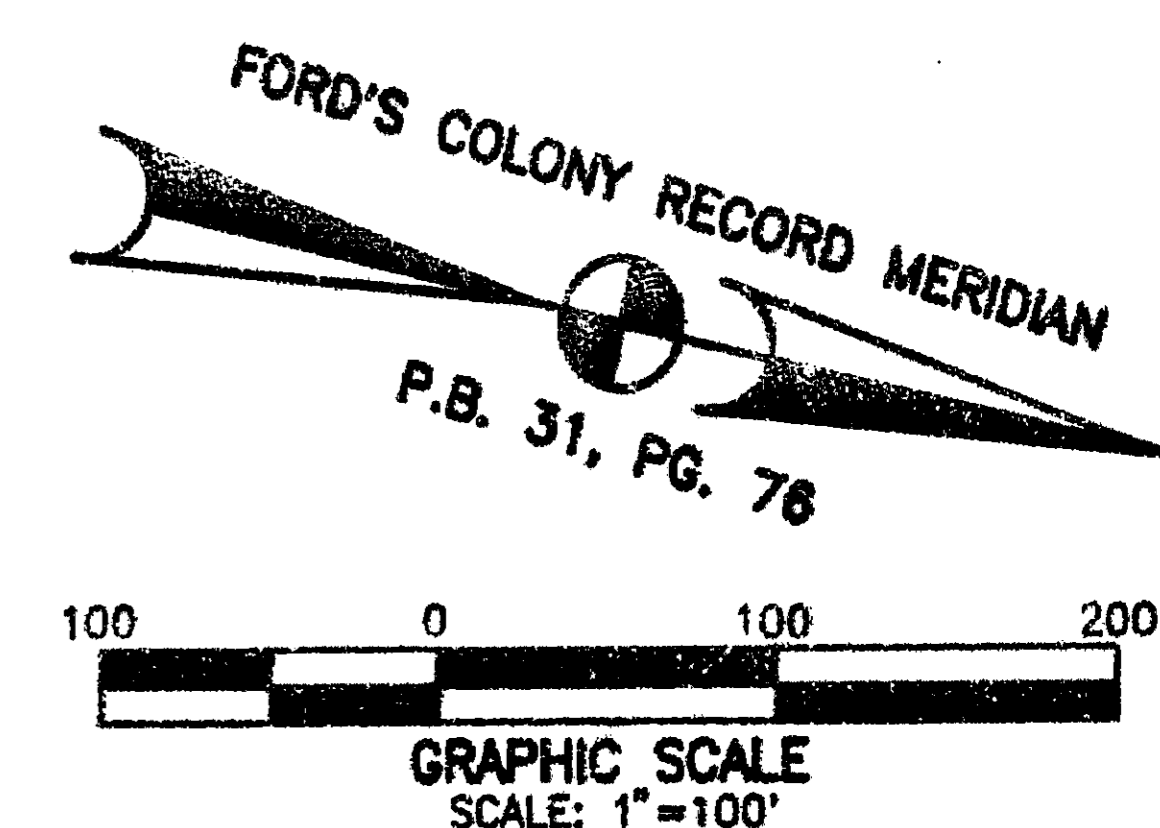
GREENWAY CURVE DATA

NO.	DELTA	RADIUS	ARC	TANGENT	CHORD	CHORD BEARING
G1	02°09'27"	551.06'	20.75'	10.38'	20.75'	S19°40'35"E
G2	07°25'32"	158.19'	20.50'	10.27'	20.49'	S21°08'50"E
G3	00°31'08"	2208.41'	20.00'	10.00'	20.00'	S11°28'51"E

SECTION XIII-E

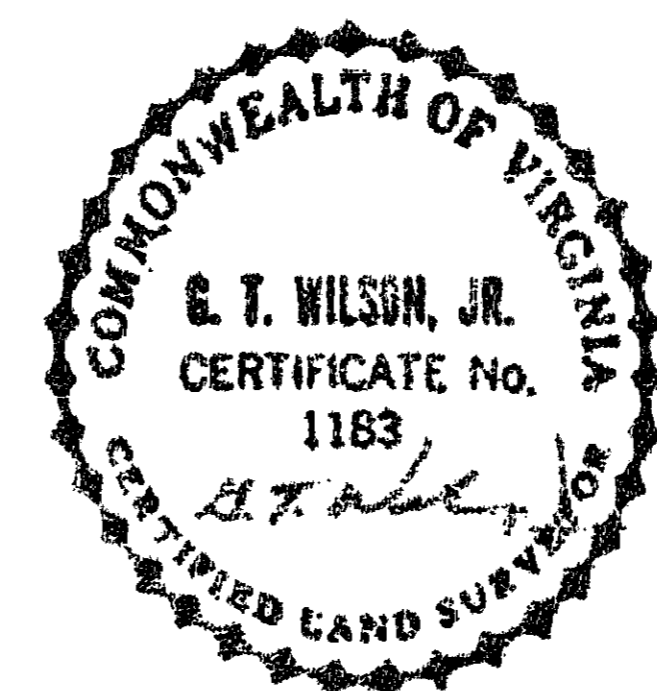
AREA TABULATION

TOTAL AREA OF RESIDENTIAL LOTS	462,338 S.F.±	10.61 AC.±
TOTAL AREA OF R/W	56,505 S.F.±	1.30 AC.±
TOTAL AREA OF GREENWAY	28,749 S.F.±	0.66 AC.±
TOTAL AREA OF SECTION XIII-E	547,592 S.F.±	12.57 AC.±
NUMBER OF LOTS	25	
AVERAGE LOT SIZE	18,494 S.F.±	0.42 AC.±
LARGEST LOT (#24)	24,641 S.F.±	0.566 AC.±
SMALLEST LOT (#15)	15,046 S.F.±	0.345 AC.±
GROSS LOTS PER ACRE	1.99	



5248 Olde Towne Road, Suite 1
 Williamsburg, Virginia
 (804) 253-0040
 Fax (804) 220-8994

PLAT OF
FORD'S COLONY
 @ **WILLIAMSBURG**
 SECTION XIII-E
 BERKELEY DISTRICT JAMES CITY COUNTY VIRGINIA



No.	DATE	REVISION / COMMENT / NOTE	BY

Designed HWP	Drawn EAW
Scale 1"=100'	Date FEB, 1993
Project No. 5652	
Drawing No. 2 OF 2	