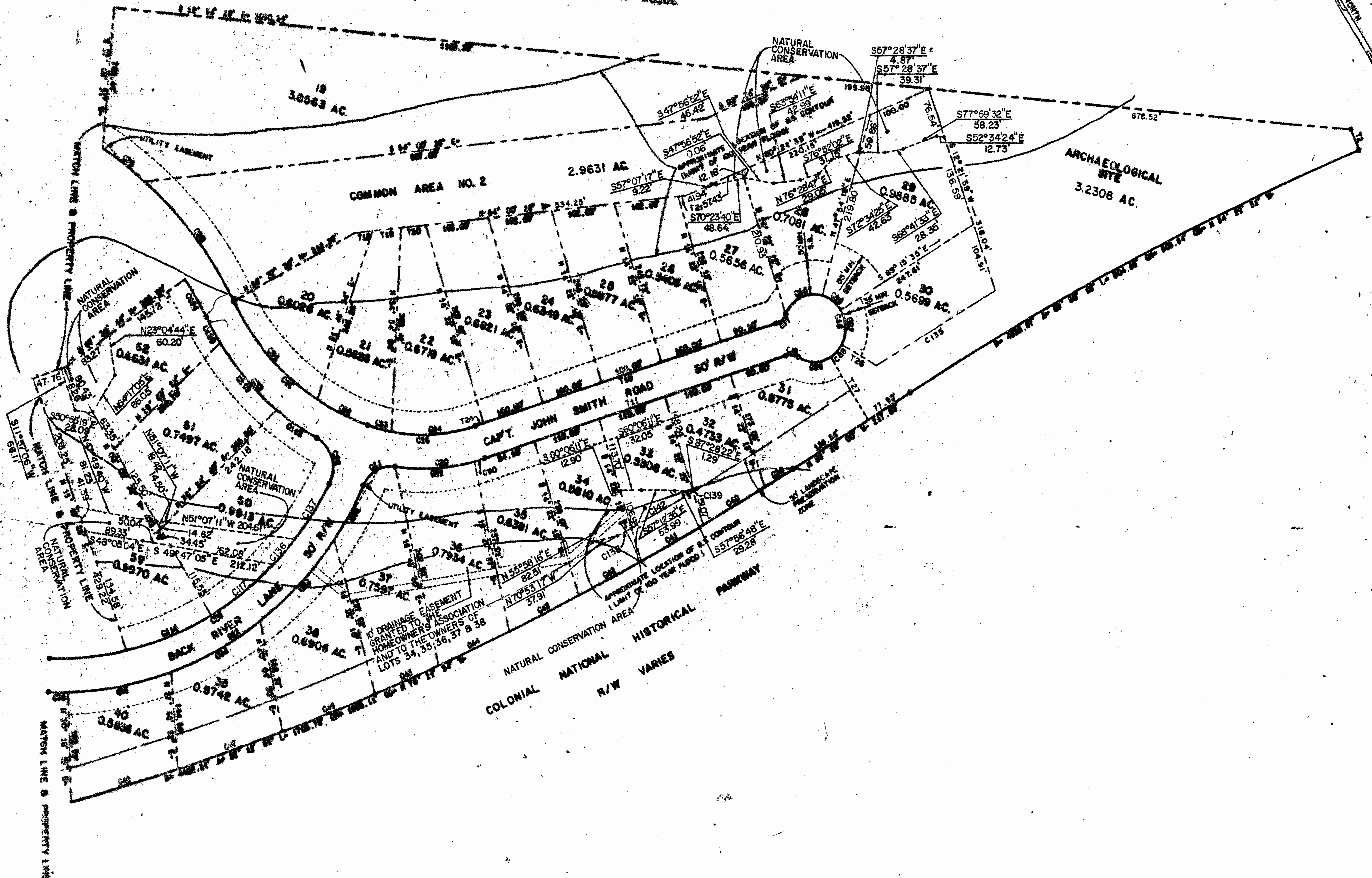


N/F
WILL CREEK LANDING ASSOC.



PLAT OF EASEMENTS
 FOR
 PAGE LANDING AT JAMESTOWN
 (D.B. 438, PG. 667)
 JAMES CITY COUNTY, VIRGINIA
 DATE: 11-18-92 SCALE: 1" = 100'
 LANGLEY and McDONALD, P.C.
 ENGINEERS • SURVEYORS • PLANNERS
 LANDSCAPE ARCHITECTS • ENVIRONMENTAL CONSULTANTS

