

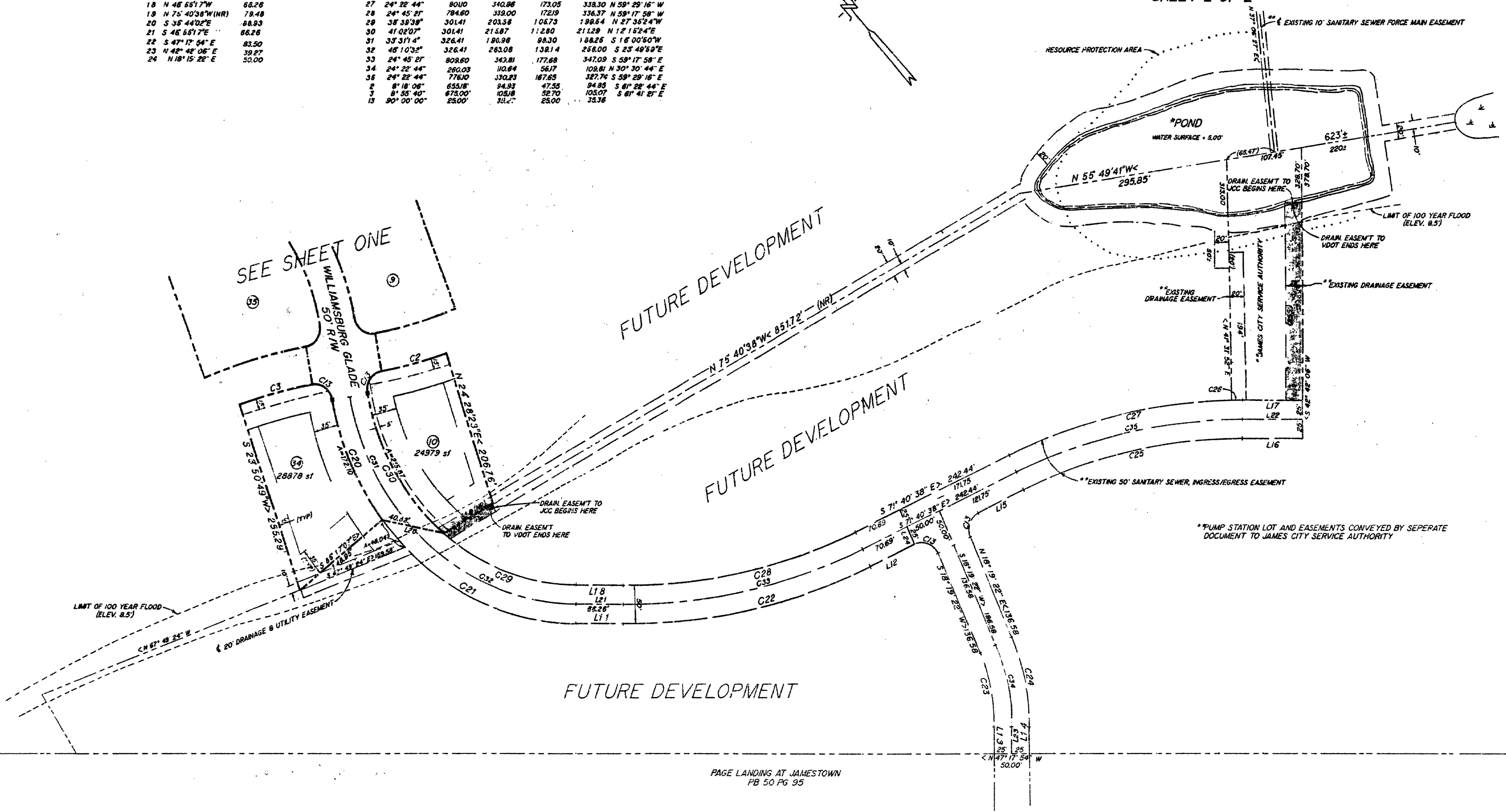
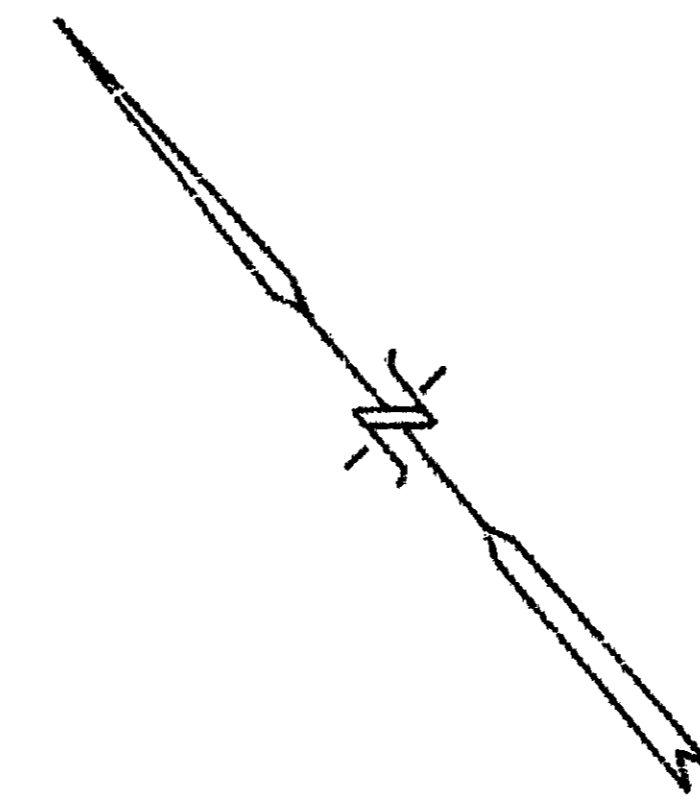
PLAT OF CORRECTION
PELEG'S POINT
 (FORMERLY WILLIAMSBURG GLADE)
 SECTION ONE
 JAMESTOWN DISTRICT
 JAMES CITY COUNTY, VIRGINIA

C. K. TUDOR ENGINEERS, INC.
 11524 JEFFERSON AVENUE
 NEWPORT NEWS, VIRGINIA 23601

SCALE: 1" = 100' DECEMBER 2, 1992

SHEET 2 OF 2

LINE	BEARING	DISTANCE	CURVE	DELTA	RADIUS	ARC	TANGENT	CHORD	CHORD BRG
11	S 45° 55' 17" E	66.26	20	28° 03' 38"	351.41	1721.0	87.81	170.33	S 18° 44' 40" W
12	S 71° 40' 38" E	70.69	21	51° 38' 10"	351.41	3167.0	170.02	308.09	S 21° 08' 10" E
13	S 42° 42' 08" W	39.27	22	24° 45' 21"	834.60	361.61	183.16	157.81	N 59° 17' 58" W
14	N 42° 42' 08" E	39.27	23	24° 22' 44"	235.03	100.00	50.77	98.25	S 30° 30' 44" W
15	S 71° 40' 38" E	71.75	24	24° 22' 44"	285.03	121.98	61.57	120.37	N 30° 30' 44" E
16	S 47° 17' 54" E	83.50	25	24° 22' 44"	750.0	318.59	162.25	317.18	S 59° 29' 16" E
17	N 47° 17' 54" W	83.50	26	0° 10' 14"	800.0	16.37	8.18	16.37	N 47° 52' 59" W
18	N 45° 55' 17" W	63.26	27	24° 22' 44"	800.0	340.86	173.05	338.30	N 59° 29' 16" W
19	N 75° 40' 38" W (NR)	79.48	28	24° 45' 21"	784.60	339.00	172.19	336.37	N 59° 17' 58" W
20	S 35° 44' 02" E	88.93	29	38° 38' 39"	301.41	203.58	106.73	198.54	N 27° 35' 24" W
21	S 45° 55' 17" E	86.26	30	41° 02' 07"	301.41	215.87	112.80	211.29	N 12° 15' 24" E
22	S 47° 17' 54" E	83.50	31	35° 31' 4"	326.41	190.98	98.30	188.25	S 16° 00' 50" W
23	N 42° 42' 08" E	39.27	32	48° 10' 32"	326.41	263.08	138.14	258.00	S 23° 48' 59" E
24	N 18° 15' 22" E	50.00	33	24° 45' 21"	809.60	342.81	177.68	347.09	S 59° 17' 58" E
			34	24° 22' 44"	260.03	110.64	56.17	109.81	N 30° 30' 44" E
			35	24° 22' 44"	776.10	330.23	167.65	327.74	S 59° 29' 16" E
			36	8° 18' 08"	653.18	94.93	47.55	94.95	S 61° 28' 44" E
			37	8° 55' 40"	673.00	105.18	52.70	103.07	S 61° 41' 21" E
			38	90° 00' 00"	250.0	25.00	25.00	25.00	S 81° 41' 21" E



PAGE LANDING AT JAMESTOWN
 PB 50 PG 95

PLAT RECORDED IN
 P.B. NO. 57 PAGE 1-2

2:29 PM
 11th MARCH, 1993
 608 225
 Helene Stad

CK Tudor
 12/9/92