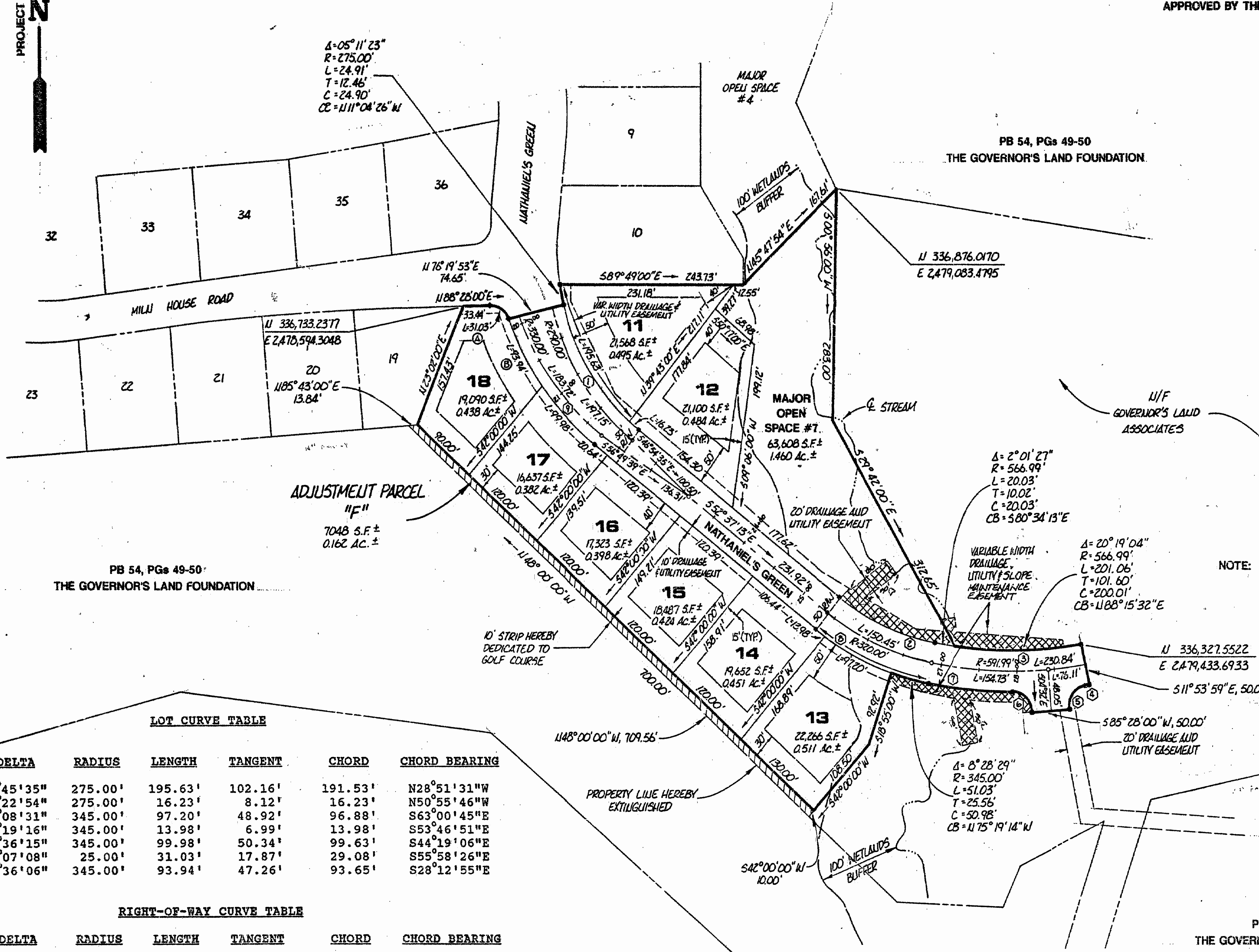
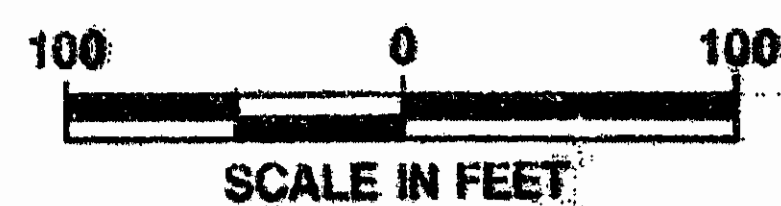


NOTE REGARDING BUILDING SETBACKS
 UNLESS OTHERWISE NOTED, BUILDING SETBACKS FOR
 THE LOTS SHOWN ARE AS FOLLOWS:
 FRONT: 40' SIDE: 15'
 REAR: 30'

RESTRICTIONS IN AREAS OF MAJOR OPEN SPACE
 THOSE AREAS SHOWN AND DENOTED AS
 "MAJOR OPEN SPACE" SHALL BE UNDISTURBED
 AND EXCLUSIVE OF ANY LOTS, EXCEPT
 FOR GOLF FAIRWAYS, UTILITIES, DRAINAGE
 IMPROVEMENTS, ROADS AS SHOWN GENERALLY
 ON THE MASTER PLAN FOR GOV. JONAS
 LAND, JOGGING, NATURE, OR GOLF
 TRAILS OR BRIDGES, AND SIGNAGE
 APPROVED BY THE PLANNING COMMISSION.



PB 54, PGS 49-50
 THE GOVERNOR'S LAND FOUNDATION

PB 54, PGS 49-50
 THE GOVERNOR'S LAND FOUNDATION

LOT CURVE TABLE

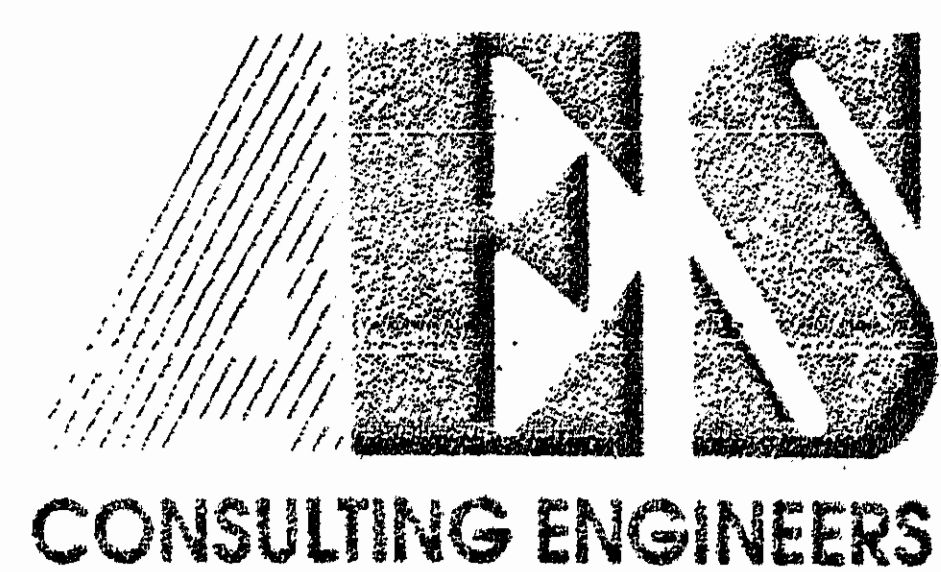
NO.	DELTA	RADIUS	LENGTH	TANGENT	CHORD	CHORD BEARING
11	40°45'35"	275.00'	195.63'	102.16'	191.53'	N28°51'31"W
12	03°22'54"	275.00'	16.23'	8.12'	16.23'	N50°55'46"W
13	16°08'31"	345.00'	97.20'	48.92'	96.88'	S63°00'45"E
14	02°19'16"	345.00'	13.98'	6.99'	13.98'	S53°46'51"E
17	16°36'15"	345.00'	99.98'	50.34'	99.63'	S44°19'06"E
18A	71°07'08"	25.00'	31.03'	17.87'	29.08'	S55°58'26"E
18B	15°36'06"	345.00'	93.94'	47.26'	93.65'	S28°12'55"E

RIGHT-OF-WAY CURVE TABLE

NO.	DELTA	RADIUS	LENGTH	TANGENT	CHORD	CHORD BEARING
1	38°57'06"	275.00'	186.95'	97.25'	183.38'	S33°08'40"E
2	26°56'16"	295.00'	138.70'	70.65'	137.42'	S66°05'21"E
3	22°20'31"	566.99'	221.09'	111.97'	219.69'	N89°16'15"E
4	02°53'59"	616.99'	31.23'	15.62'	31.22'	S79°32'59"W
5	85°31'59"	25.00'	37.32'	23.12'	33.95'	S38°14'00"W
6	85°31'59"	25.00'	37.32'	23.12'	33.95'	N47°17'59"W
7	10°30'30"	616.99'	113.16'	56.74'	113.00'	N84°48'44"W
8	26°56'16"	345.00'	162.20'	82.63'	160.71'	N66°05'21"W
9	32°12'21"	345.00'	193.92'	99.60'	191.38'	N36°31'02"W

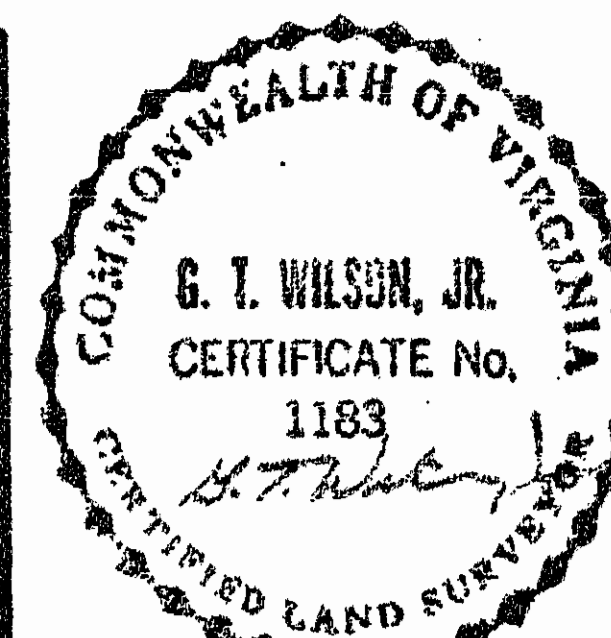
REFERENCE IS HEREBY EXPRESSLY MADE TO THE GENERAL
 NOTES AS THEY APPEAR ON SHEET #1 OF THIS PLAT, AND
 THE DECLARATION FOR THE GOVERNOR'S LAND AT TWO RIVERS
 FOR ADDITIONAL INFORMATION, RULES AND REGULATIONS
 REGARDING THIS SUBDIVISION.

11:59 AM
 Recorded 309 of 1992
 in
 D. B. No. 593, pages 533
 Clerk



5248 Olde Towne Road, Suite 1
 Williamsburg, Virginia 23188
 (804) 253-0040
 Fax (804) 220-8994

PLAT OF
 NATHANIEL'S GREEN, LOTS 11-18
 THE
 GOVERNOR'S LAND
 At Two Rivers
 POWHATAN DISTRICT JAMES CITY COUNTY VIRGINIA



NO.	DATE	REVISION	COMMENT	NOT	BY

Designed VMB	Drawn BJU
Scale 1"=100'	Date AUG. 1992
Project No. 7173	
Drawing No. 3 of 3	