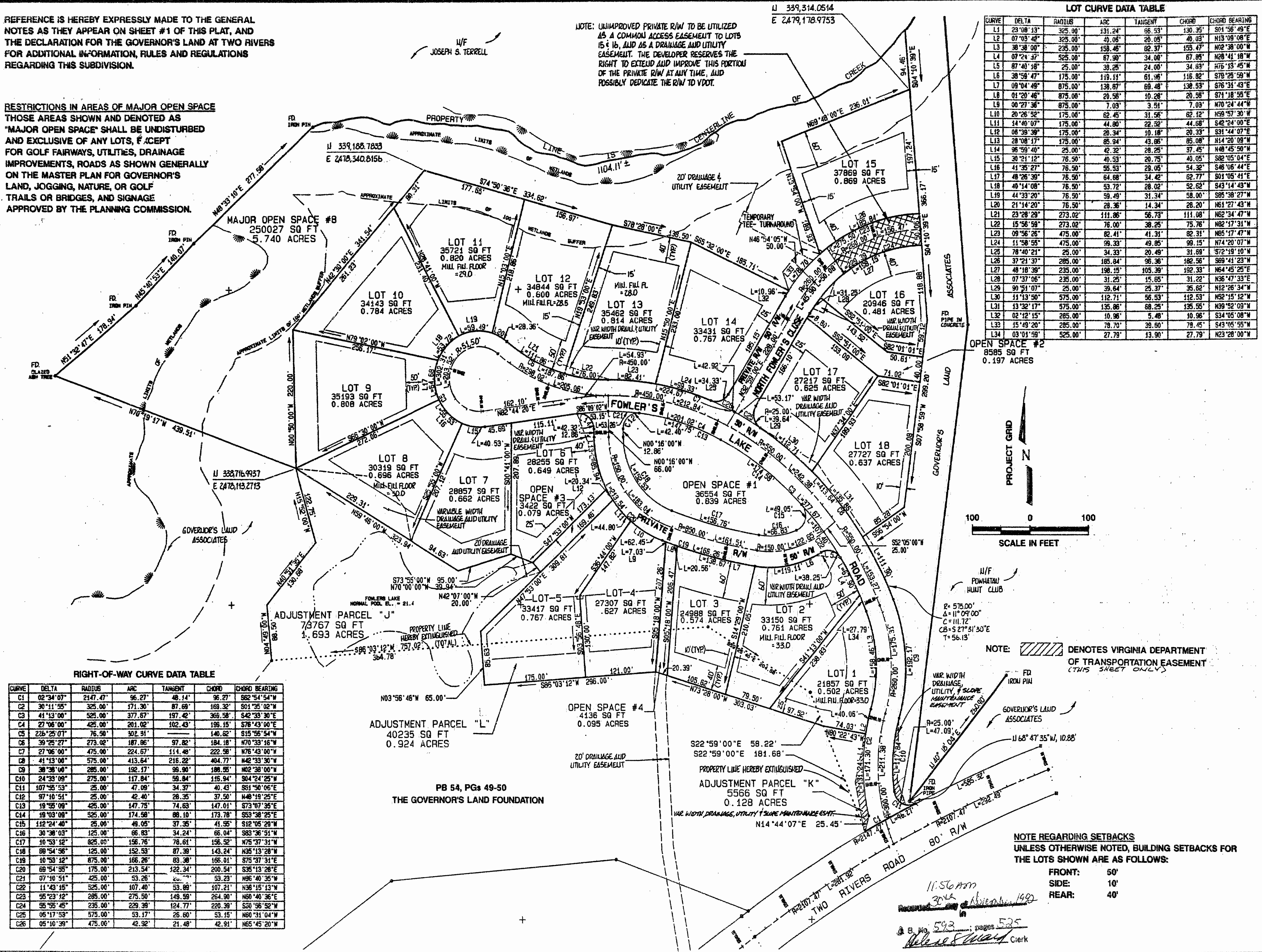


REFERENCE IS HEREBY EXPRESSLY MADE TO THE GENERAL NOTES AS THEY APPEAR ON SHEET #1 OF THIS PLAT, AND THE DECLARATION FOR THE GOVERNOR'S LAND AT TWO RIVERS FOR ADDITIONAL INFORMATION, RULES AND REGULATIONS REGARDING THIS SUBDIVISION.

RESTRICTIONS IN AREAS OF MAJOR OPEN SPACE THOSE AREAS SHOWN AND DENOTED AS "MAJOR OPEN SPACE" SHALL BE UNDISTURBED AND EXCLUSIVE OF ANY LOTS, EXCEPT FOR GOLF FAIRWAYS, UTILITIES, DRAINAGE IMPROVEMENTS, ROADS AS SHOWN GENERALLY ON THE MASTER PLAN FOR GOVERNOR'S LAND, JOGGING, NATURE, OR GOLF TRAILS OR BRIDGES, AND SIGNAGE APPROVED BY THE PLANNING COMMISSION.

NOTE: UNIMPROVED PRIVATE R/W TO BE UTILIZED AS A COMMON ACCESS EASEMENT TO LOTS 15 & 16, AND AS A DRAINAGE AND UTILITY EASEMENT. THE DEVELOPER RESERVES THE RIGHT TO EXTEND AND IMPROVE THIS PORTION OF THE PRIVATE R/W AT ANY TIME, AND POSSIBLY DEDICATE THE R/W TO VDOT.

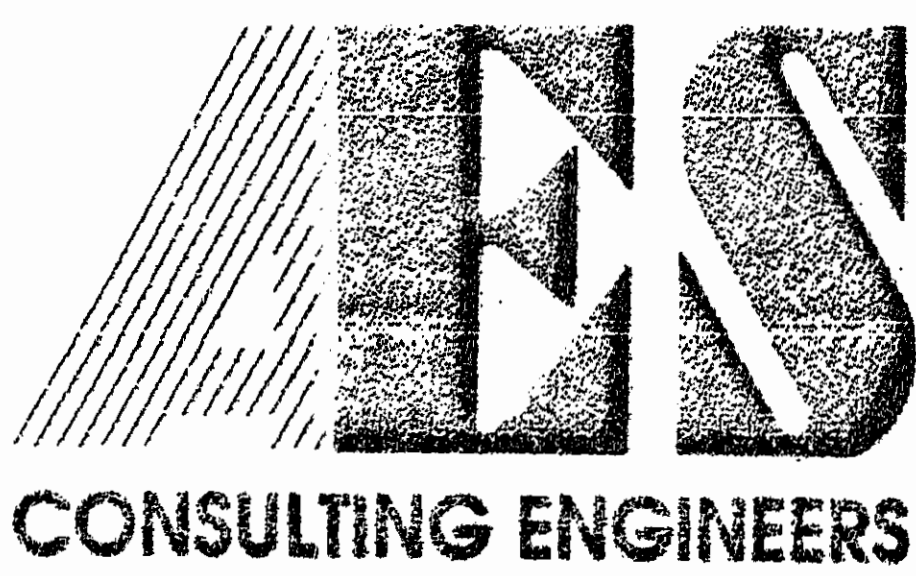
LOT CURVE DATA TABLE with columns: CURVE, DELTA, RADIUS, ARC, TANGENT, CHORD, CHORD BEARING. Contains data for curves L1 through L34.



RIGHT-OF-WAY CURVE DATA TABLE with columns: CURVE, DELTA, RADIUS, ARC, TANGENT, CHORD, CHORD BEARING. Contains data for curves C1 through C26.

NOTE: DENOTES VIRGINIA DEPARTMENT OF TRANSPORTATION EASEMENT (THIS SHEET ONLY). Includes a north arrow and a scale bar in feet (0 to 100).

NOTE REGARDING SETBACKS UNLESS OTHERWISE NOTED, BUILDING SETBACKS FOR THE LOTS SHOWN ARE AS FOLLOWS: FRONT: 50', SIDE: 10', REAR: 40'.



2548 Olde Towne Road, Suite 1
Williamsburg, Virginia 23188
(804) 253-0040
Fax (804) 220-8994

PLAT OF FOWLER'S LAKE THE GOVERNOR'S LAND. At Two Rivers. JAMES CITY COUNTY VIRGINIA. Includes a circular seal for G. T. WILSON, JR., CERTIFICATE No. 1183.

Table with columns: No., DATE, REVISION / COMMENT / NOTE, BY.

Designed VMB, Drawn BJU, Scale 1"=100', Date SEPT. 1992, Project No. 7173, Drawing No. 3 of 3.