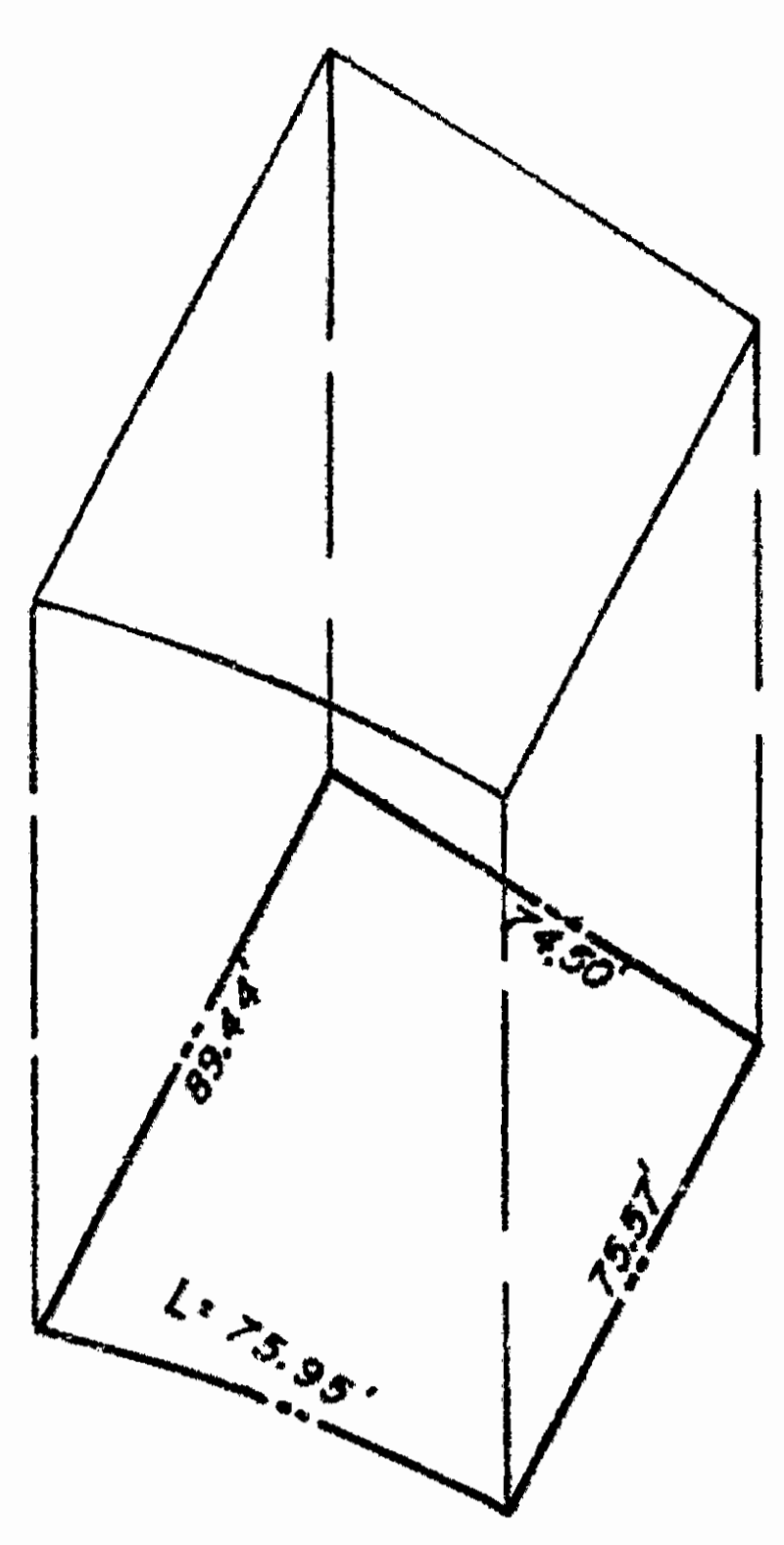


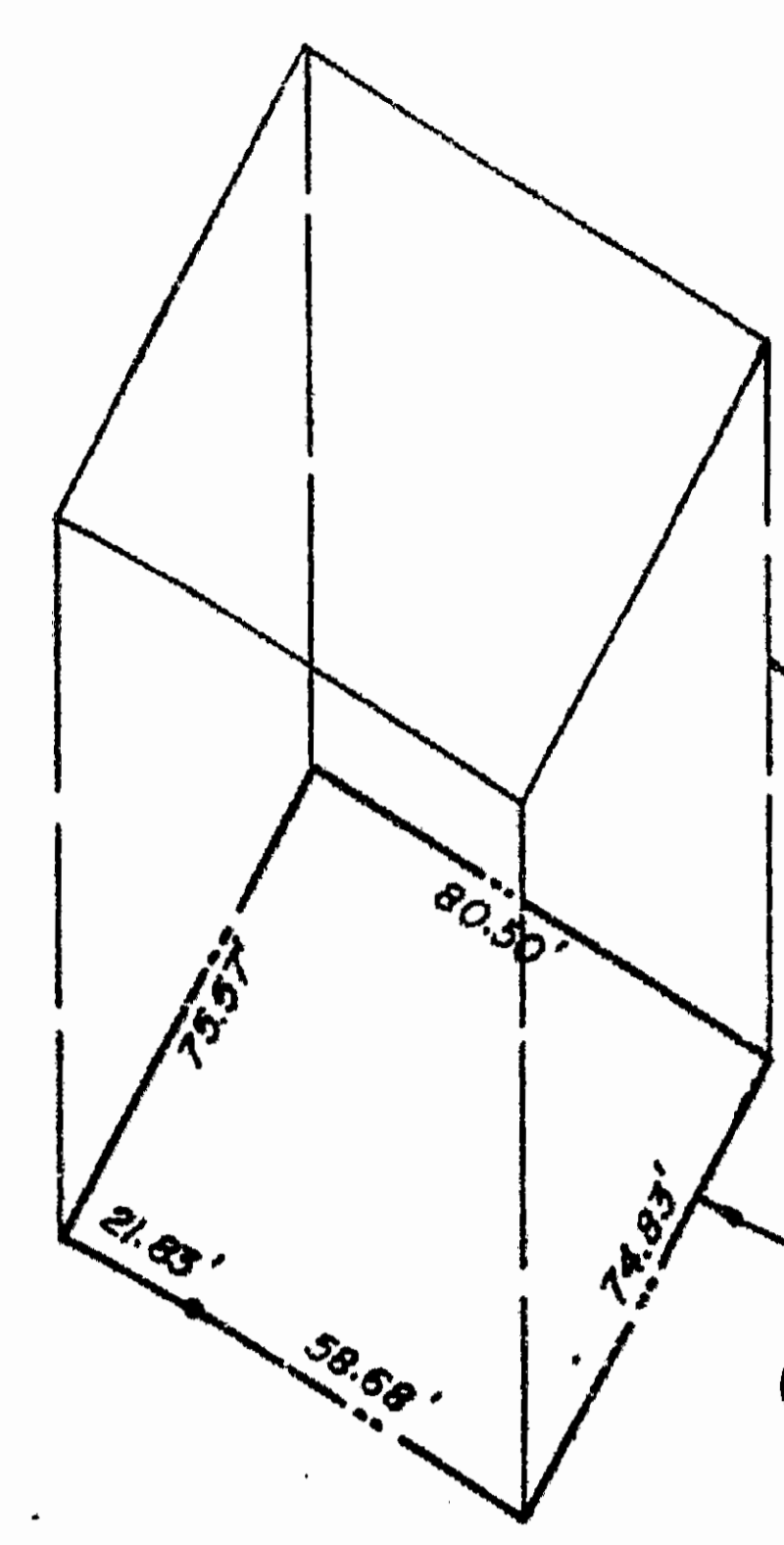
THIS PLAT IS AN EXHIBIT OF THE DECLARATION OF BRIARWOOD PARK CONDOMINIUMS DATED SEPTEMBER 1, 1992, OF RECORD IN DEED BOOK _____ AT PAGE _____.

BRIARWOOD PARK CONDOMINIUMS
PHASE ONE
POWHATAN DISTRICT
JAMES CITY COUNTY, VIRGINIA

SHEET No. 2



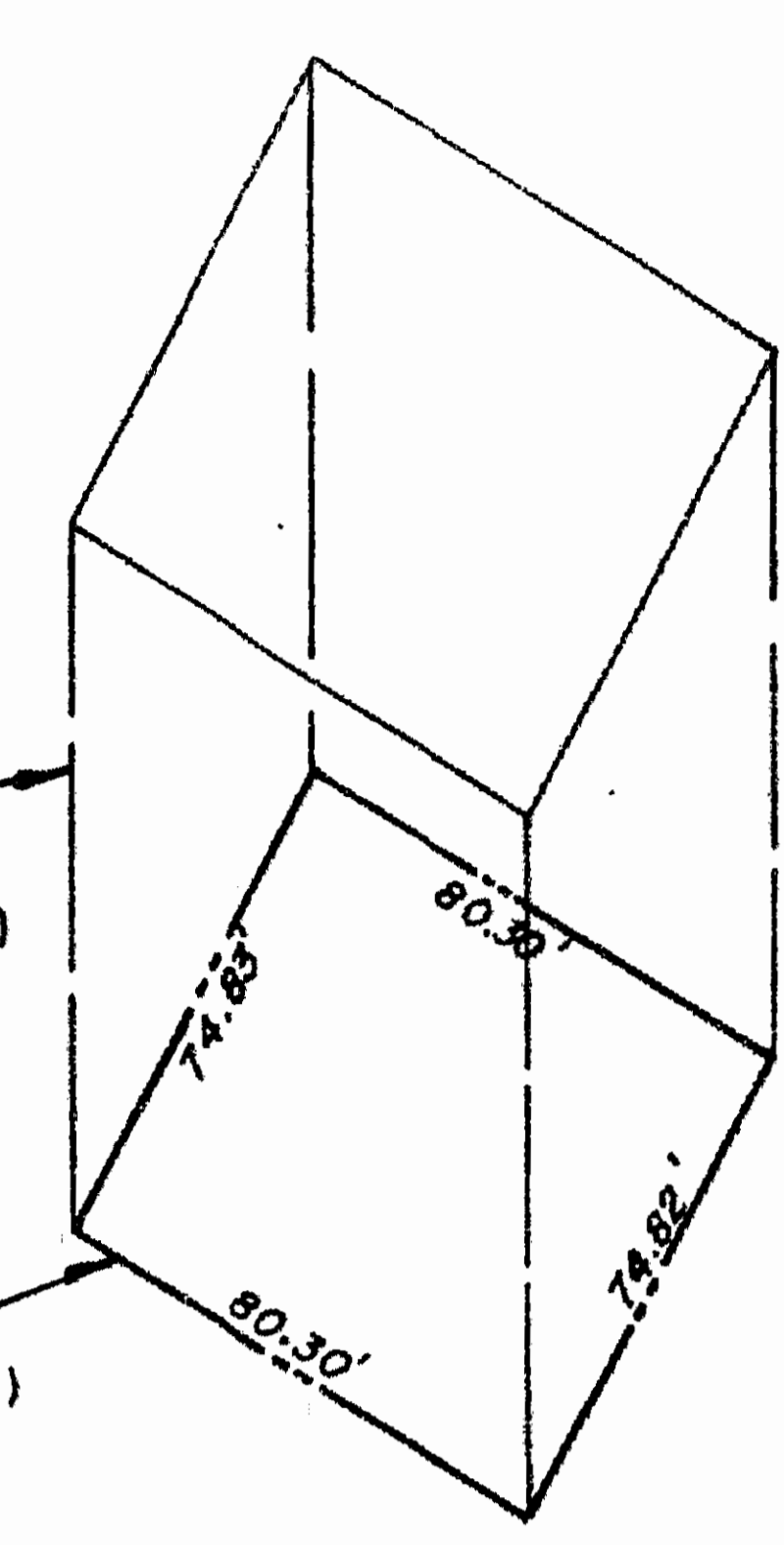
UNIT 3



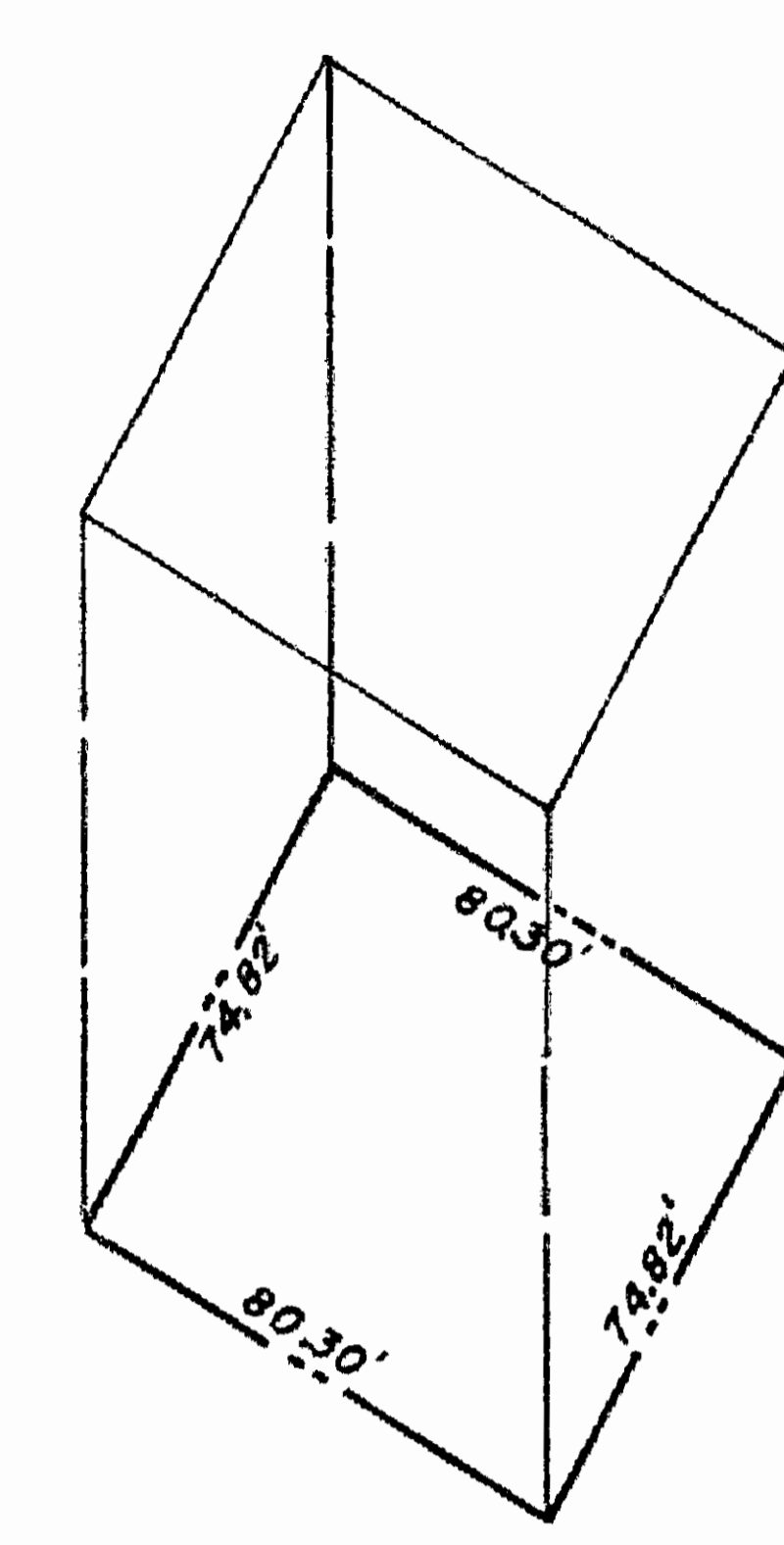
UNIT 4

VERTICAL BOUNDARY LINE (TYPICAL) (SEE NOTE 'A' BELOW)

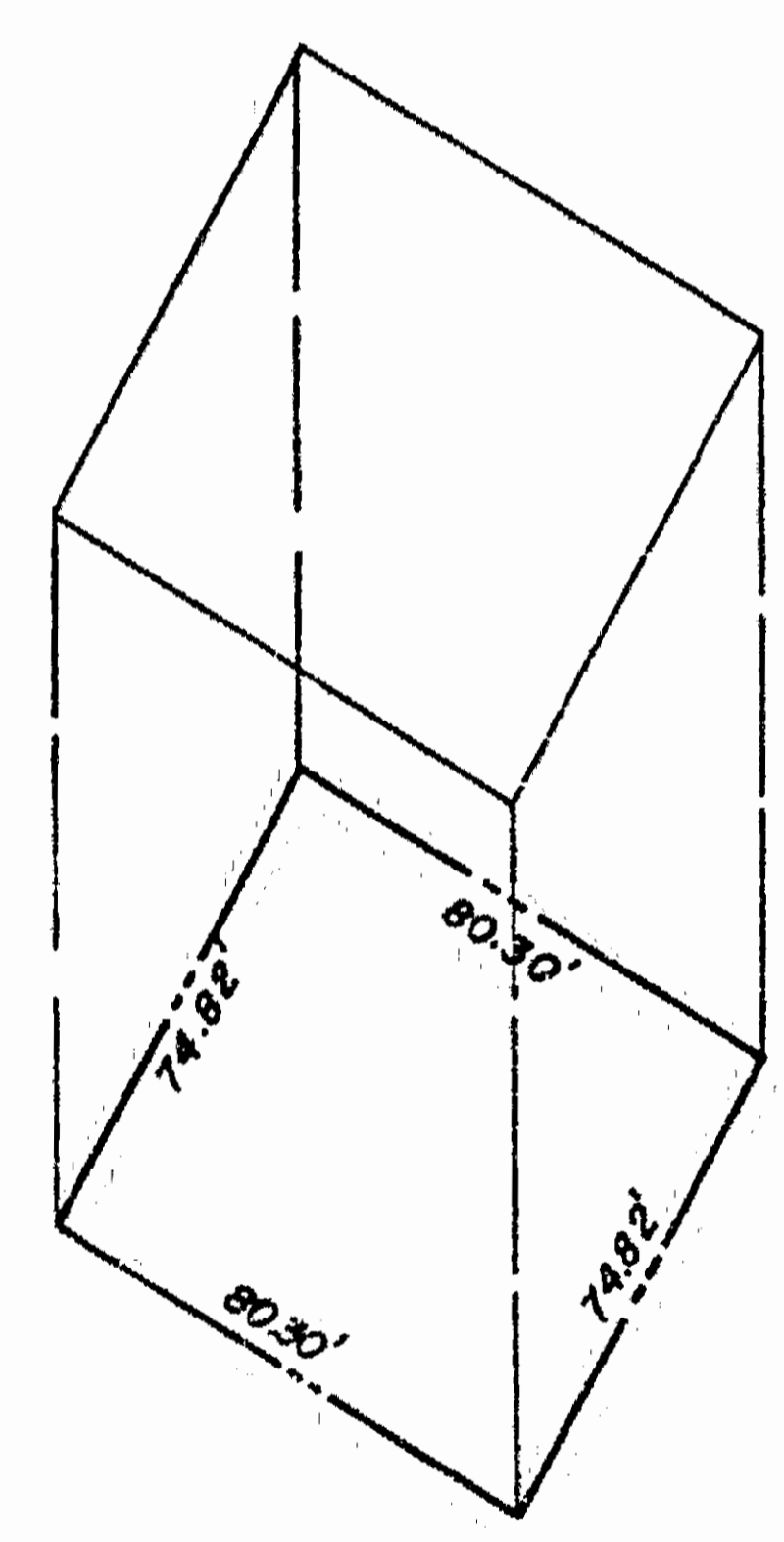
HORIZONTAL BOUNDARY LINE (TYPICAL) (SEE NOTE 'B' BELOW)



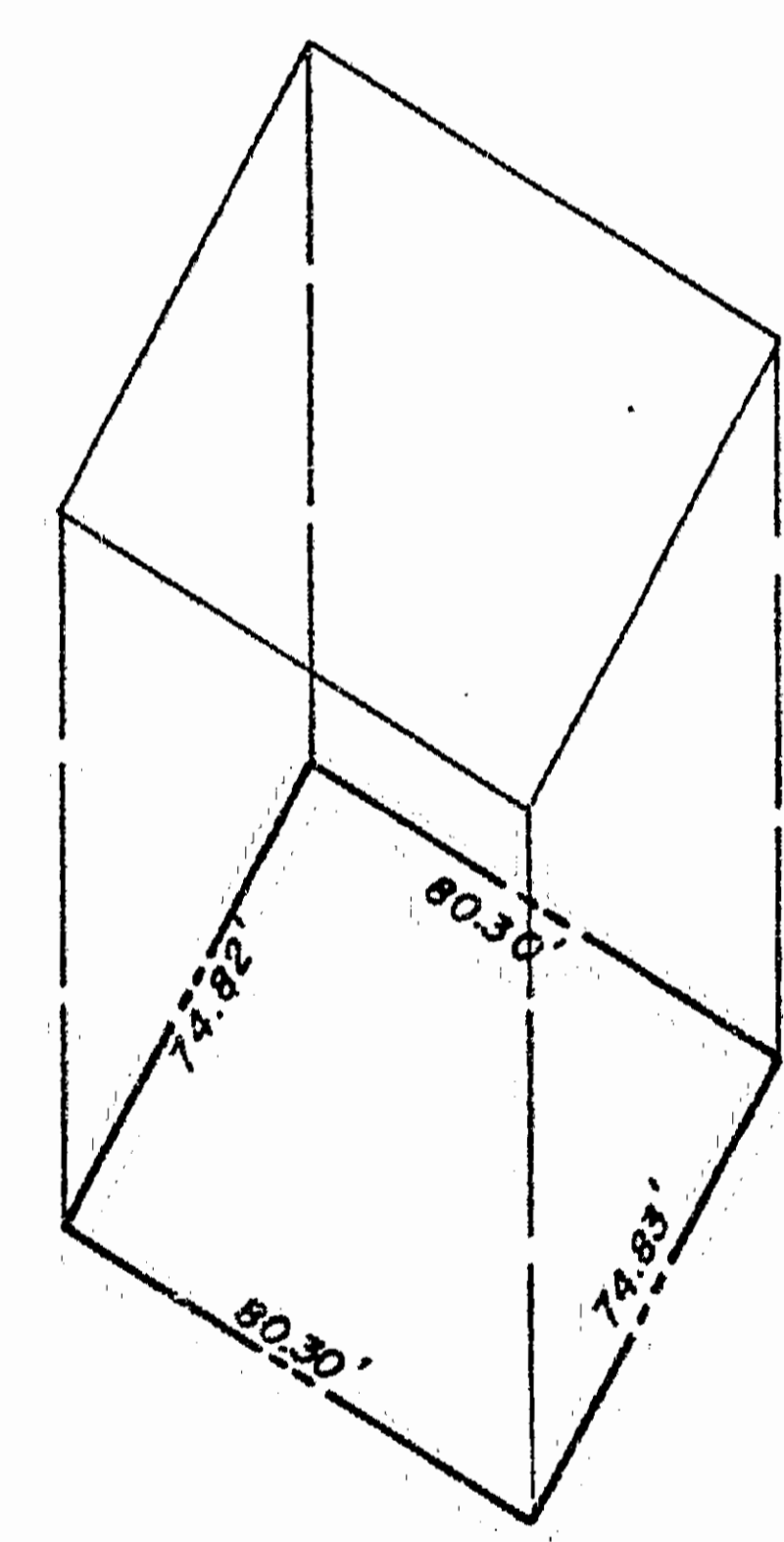
UNIT 5



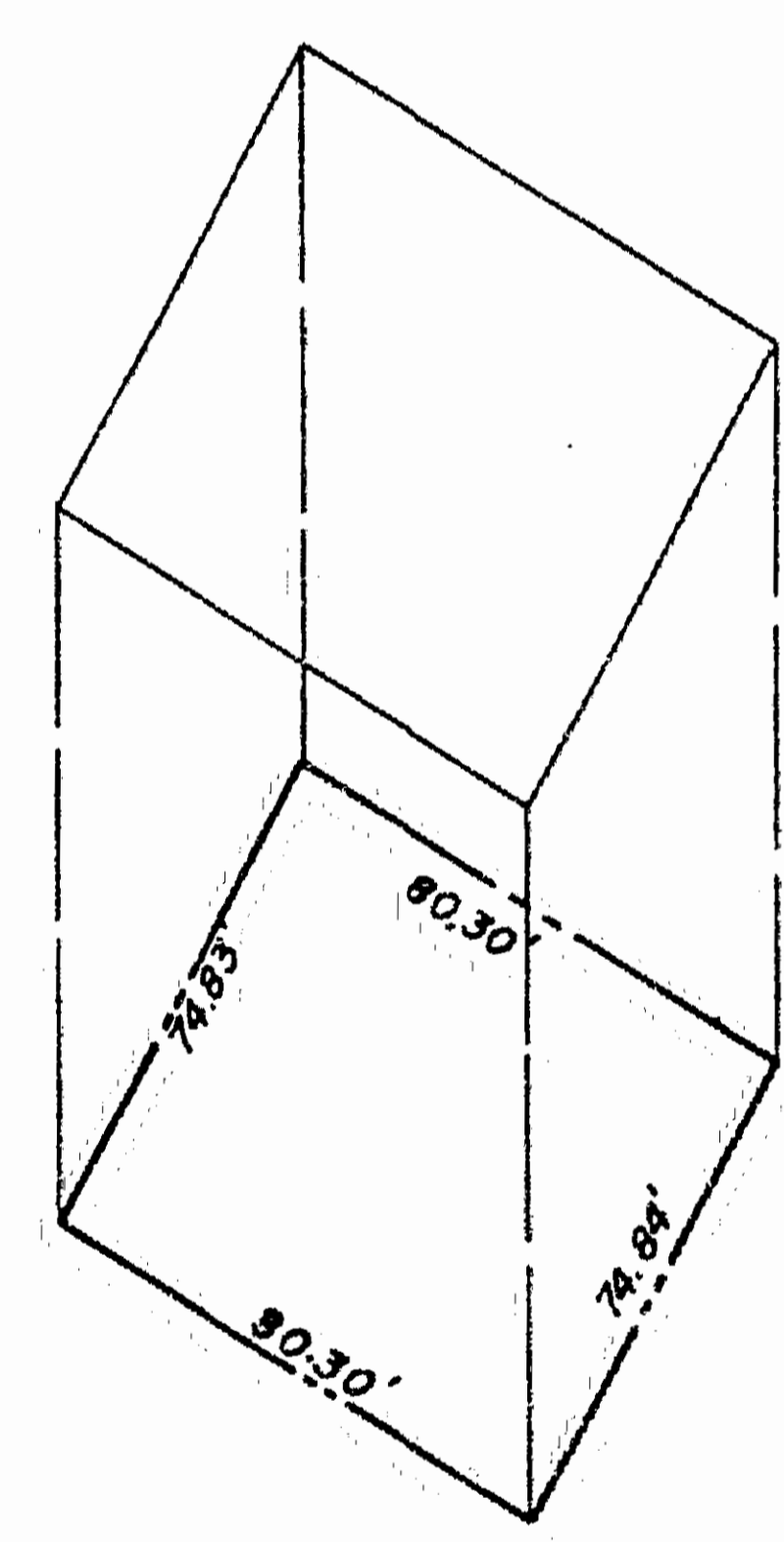
UNIT 6



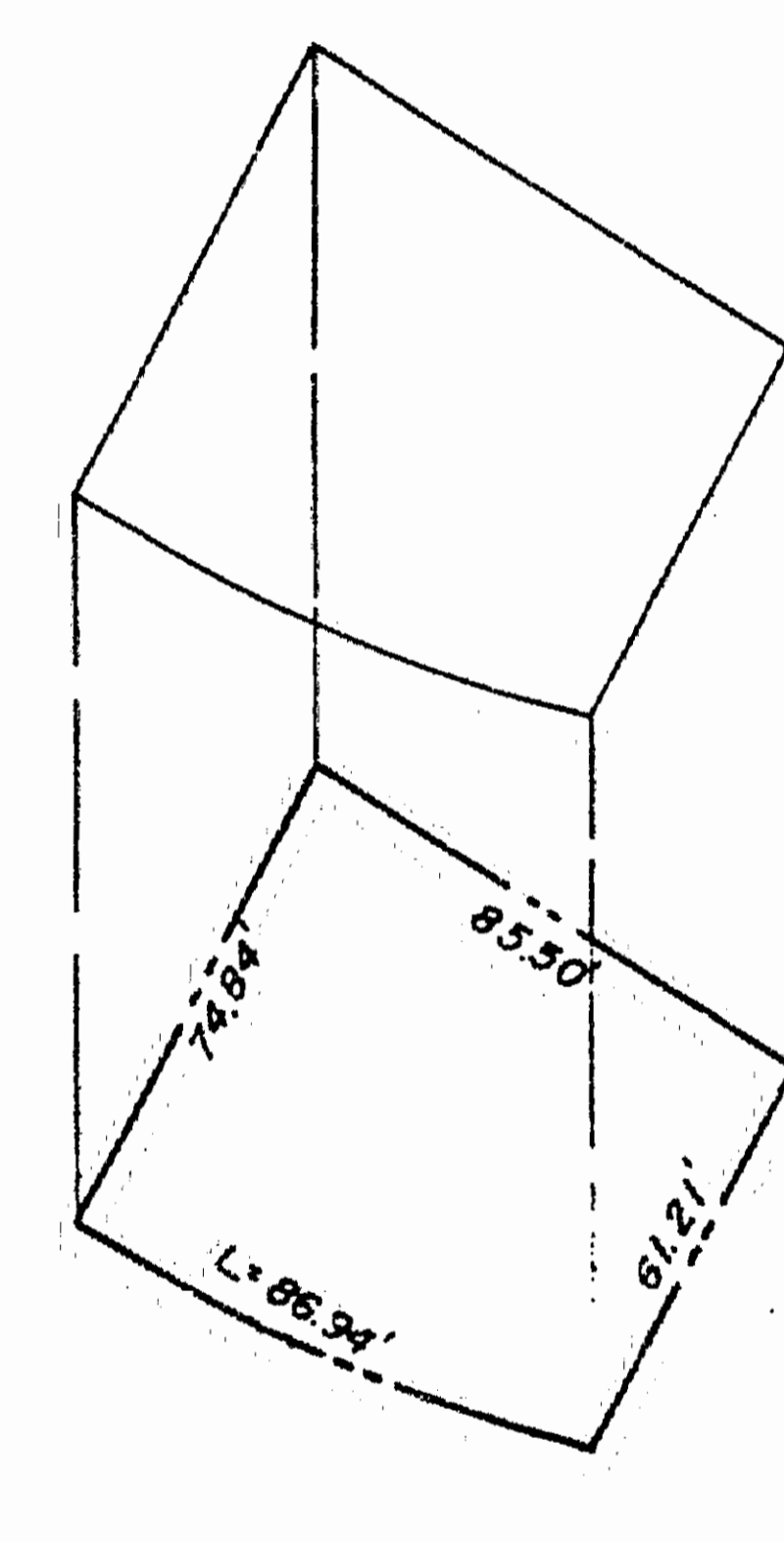
UNIT 35



UNIT 36



UNIT 37



UNIT 38

NOTE 'A': VERTICAL BOUNDARY LINES SHALL BE LIMITED TO THAT DISTANCE FROM THE HORIZONTAL BOUNDARY LINE UP TO WHICH THE PUBLIC HAS RIGHT TO USE AND ACCESS OF AIR SPACE.

NOTE 'B': HORIZONTAL BOUNDARY LINE IS UPPER SURFACE OF NATURAL GROUND.

I CERTIFY THAT THIS PLAN IS ACCURATE AND COMPLIES WITH THE PROVISIONS OF SECTION 55-79.58 B OF THE CODE OF VIRGINIA OF 1950, AS AMENDED, AND THAT ALL UNITS DEPICTED HEREON HAVE BEEN SUBSTANTIALLY COMPLETED.

11.24
Recorded 21st day of September, 1992
in _____
D. B. No. 582; pages 175
_____ Clerk