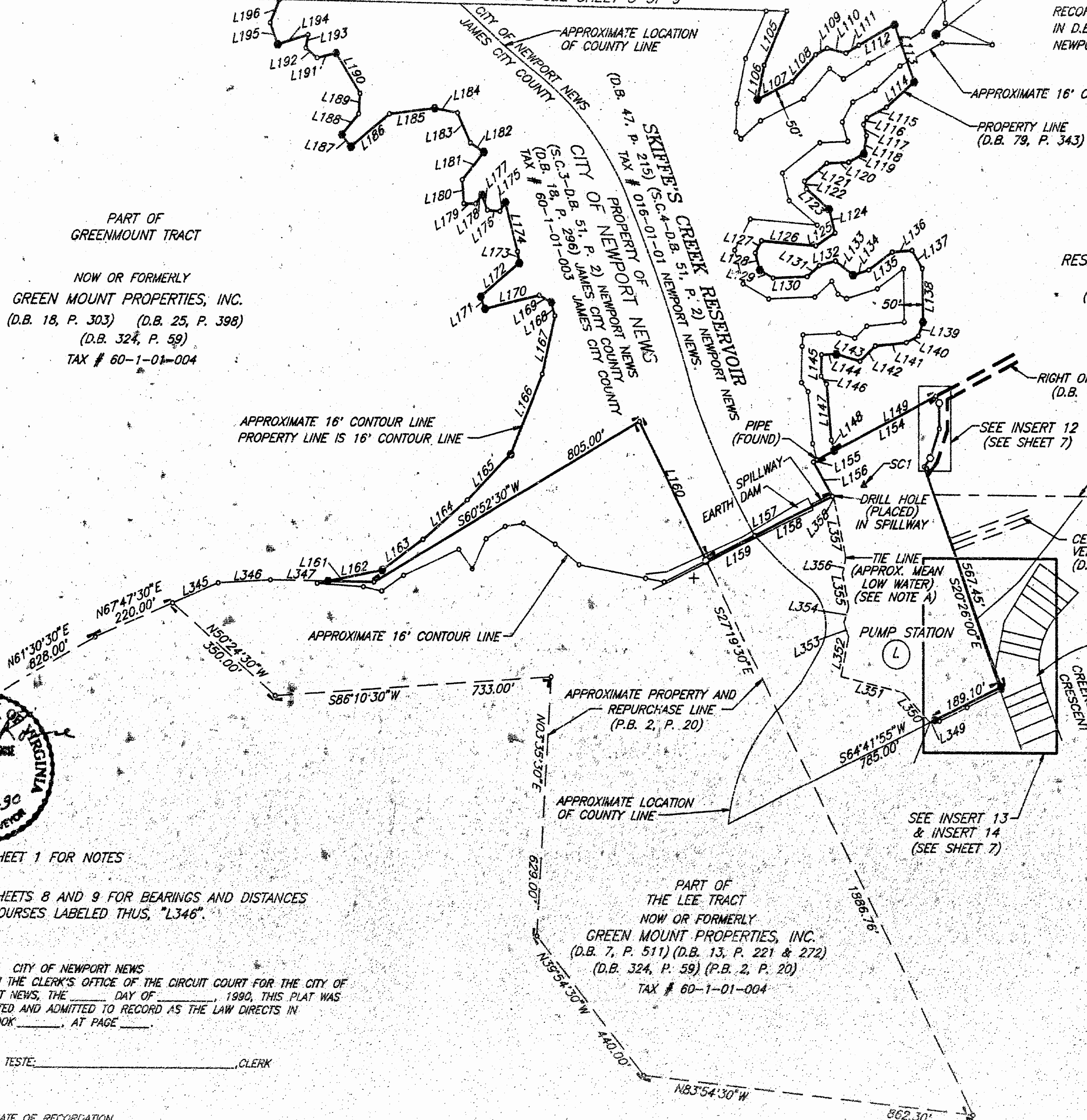


MATCH LINE SEE SHEET 4 OF 9

MATCH LINE SEE SHEET 5 OF 9

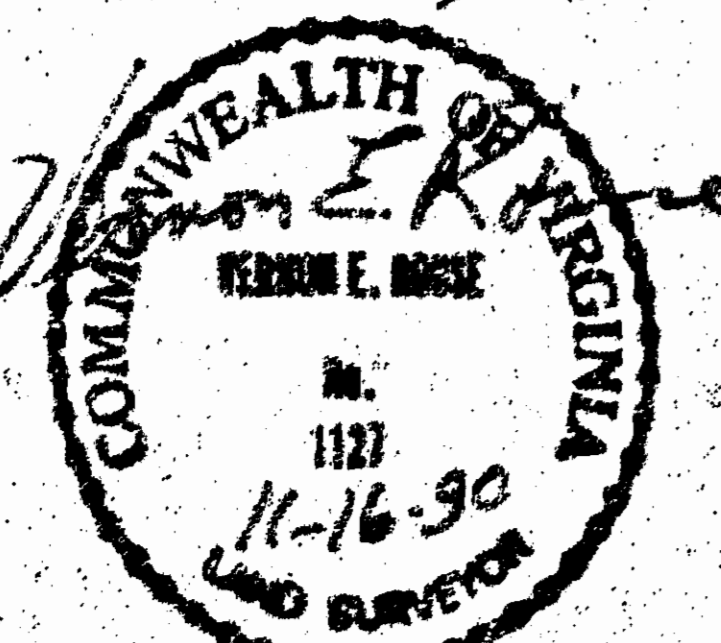
NOTE:  
THIS AREA APPARENTLY WAS NOT CONVEYED TO RESERVOIR ASSOCIATES, LIMITED BY DEED RECORDED IN D.B. 1124, P. 1413-1416 (CORRECTED IN D.B. 1173, P. 232), NOR TO THE CITY OF NEWPORT NEWS BY DEED RECORDED IN D.B. 51, P. 2.



PART OF GREENMOUNT TRACT

NOW OR FORMERLY GREEN MOUNT PROPERTIES, INC. (D.B. 18, P. 303) (D.B. 25, P. 398) (D.B. 324, P. 59) TAX # 60-1-01-004

NOW OR FORMERLY RESERVOIR ASSOCIATES, LIMITED (D.B. 1173, P. 232) (D.B. 1124, P. 1416-PLAT) TAX # 017-01-34



SEE SHEET 1 FOR NOTES

SEE SHEETS 8 AND 9 FOR BEARINGS AND DISTANCES FOR COURSES LABELED THUS, "L346"

VIRGINIA: CITY OF NEWPORT NEWS IN THE CLERK'S OFFICE OF THE CIRCUIT COURT FOR THE CITY OF NEWPORT NEWS, THE \_\_\_\_\_ DAY OF \_\_\_\_\_, 1990, THIS PLAT WAS PRESENTED AND ADMITTED TO RECORD AS THE LAW DIRECTS IN PLAT BOOK \_\_\_\_\_, AT PAGE \_\_\_\_\_.

TESTE: \_\_\_\_\_, CLERK

CERTIFICATE OF RECORDATION

IN THE CLERK'S OFFICE OF THE CIRCUIT COURT OF JAMES CITY COUNTY, VIRGINIA, ON THE \_\_\_\_\_ DAY OF \_\_\_\_\_, 1990, THIS PLAT WAS RECEIVED AND ADMITTED TO RECORD IN PLAT BOOK \_\_\_\_\_, PAGE \_\_\_\_\_.

TESTE: \_\_\_\_\_, CLERK

SHEET 6 OF 9

NOTE A:  
PROPERTY LINE EXTENDS AS FAR AS THE LAW ALLOWS. TIE LINE SHOWN HEREON IS FOR THE EASE OF AREA CALCULATIONS ONLY.

(L) PROPERTY OF CITY OF NEWPORT NEWS (D.B. 47, P. 76 & 215) (D.B. 51, P. 2) (P.B. A, P. 20 & 21) (P.B. A, P. 18 & 19) TAX # 016-01-01

