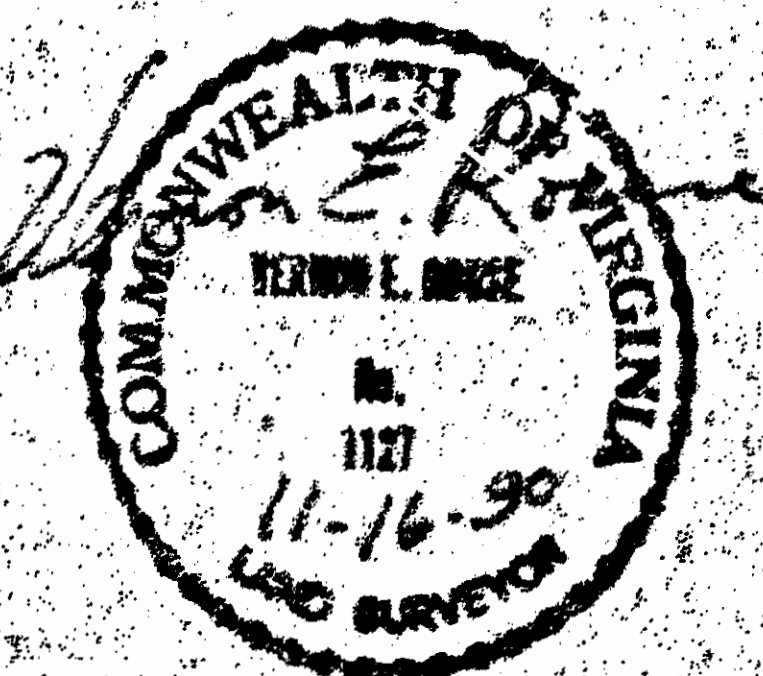
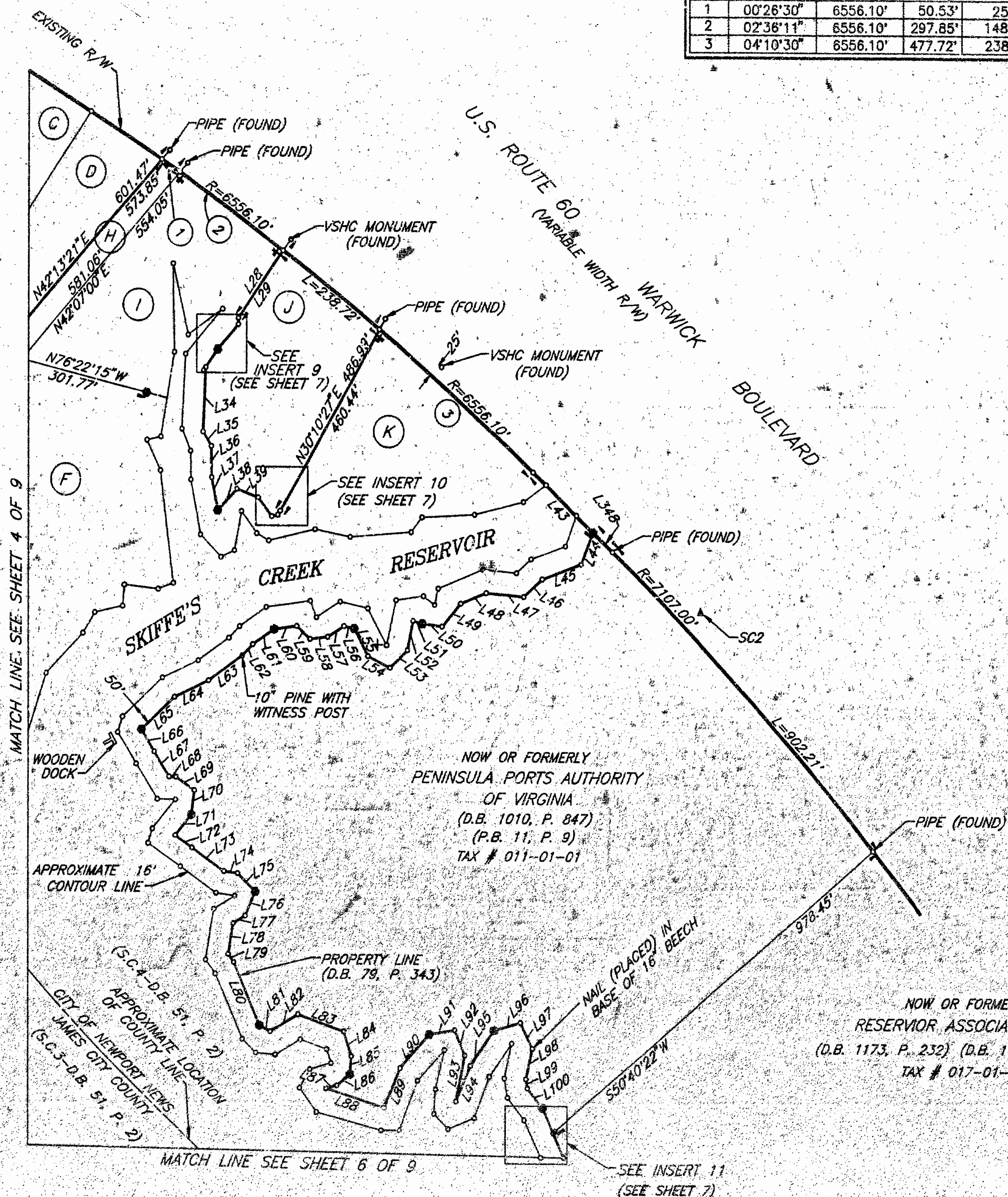


NO.	DELTA	RADIUS	ARC	TANGENT	CHORD	CH. BEARING
1	00°28'30"	6556.10'	50.53'	25.26'	50.53'	S56°49'43"E
2	02°36'11"	6556.10'	297.85'	148.95'	297.83'	S55°18'23"E
3	04°10'30"	6556.10'	477.72'	238.97'	477.62'	S49°26'16"E

- (H) PROPERTY OF  
CITY OF NEWPORT NEWS  
(D.B. 1233, P. 1213)  
(D.B. 1114, P. 592-PLAT)  
TAX # 007-02-13
- (I) PROPERTY OF  
CITY OF NEWPORT NEWS  
(D.B. 1177, P. 1061)  
(D.B. 1177, P. 1063-PLAT)  
TAX # 007-02-09  
TAX # 007-02-10
- (J) NOW OR FORMERLY  
WILLIAM C. BALLOU  
& NOVELLA S. BALLOU  
(D.B. 411, P. 68)  
(D.B. 411, P. 76-PLAT)  
TAX # 007-02-11
- (K) PROPERTY OF  
CITY OF NEWPORT NEWS  
(D.B. 1170, P. 365)  
(D.B. 1170, P. 367-PLAT)  
TAX # 007-02-12



SEE SHEET 1 FOR NOTES

SEE SHEETS 8 AND 9 FOR BEARINGS AND DISTANCES FOR COURSES LABELED THUS: "L60"

VIRGINIA: CITY OF NEWPORT NEWS  
IN THE CLERK'S OFFICE OF THE CIRCUIT COURT FOR THE CITY OF NEWPORT NEWS, THE \_\_\_\_\_ DAY OF \_\_\_\_\_, 1990, THIS PLAT WAS PRESENTED AND ADMITTED TO RECORD AS THE LAW DIRECTS IN PLAT BOOK \_\_\_\_\_, AT PAGE \_\_\_\_\_

TESTE: \_\_\_\_\_ CLERK

CERTIFICATE OF RECORDATION

IN THE CLERK'S OFFICE OF THE CIRCUIT COURT OF JAMES CITY COUNTY, VIRGINIA, ON THE \_\_\_\_\_ DAY OF \_\_\_\_\_, 1990, THIS PLAT WAS RECEIVED AND ADMITTED TO RECORD IN PLAT BOOK \_\_\_\_\_, PAGE \_\_\_\_\_

TESTE: \_\_\_\_\_ CLERK

NOW OR FORMERLY  
RESERVOIR ASSOCIATES, LIMITED  
(D.B. 1173, P. 232) (D.B. 1124, P. 1416-PLAT)  
TAX # 017-01-34

NOW OR FORMERLY  
PENINSULA PORTS AUTHORITY  
OF VIRGINIA  
(D.B. 1010, P. 847)  
(P.B. 11, P. 9)  
TAX # 011-01-01

