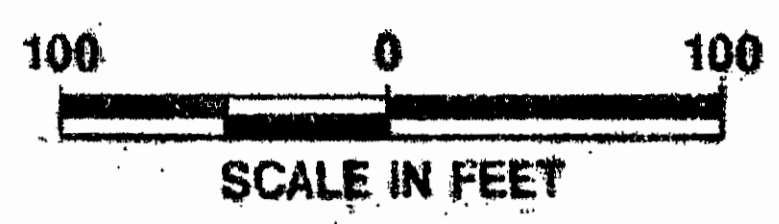
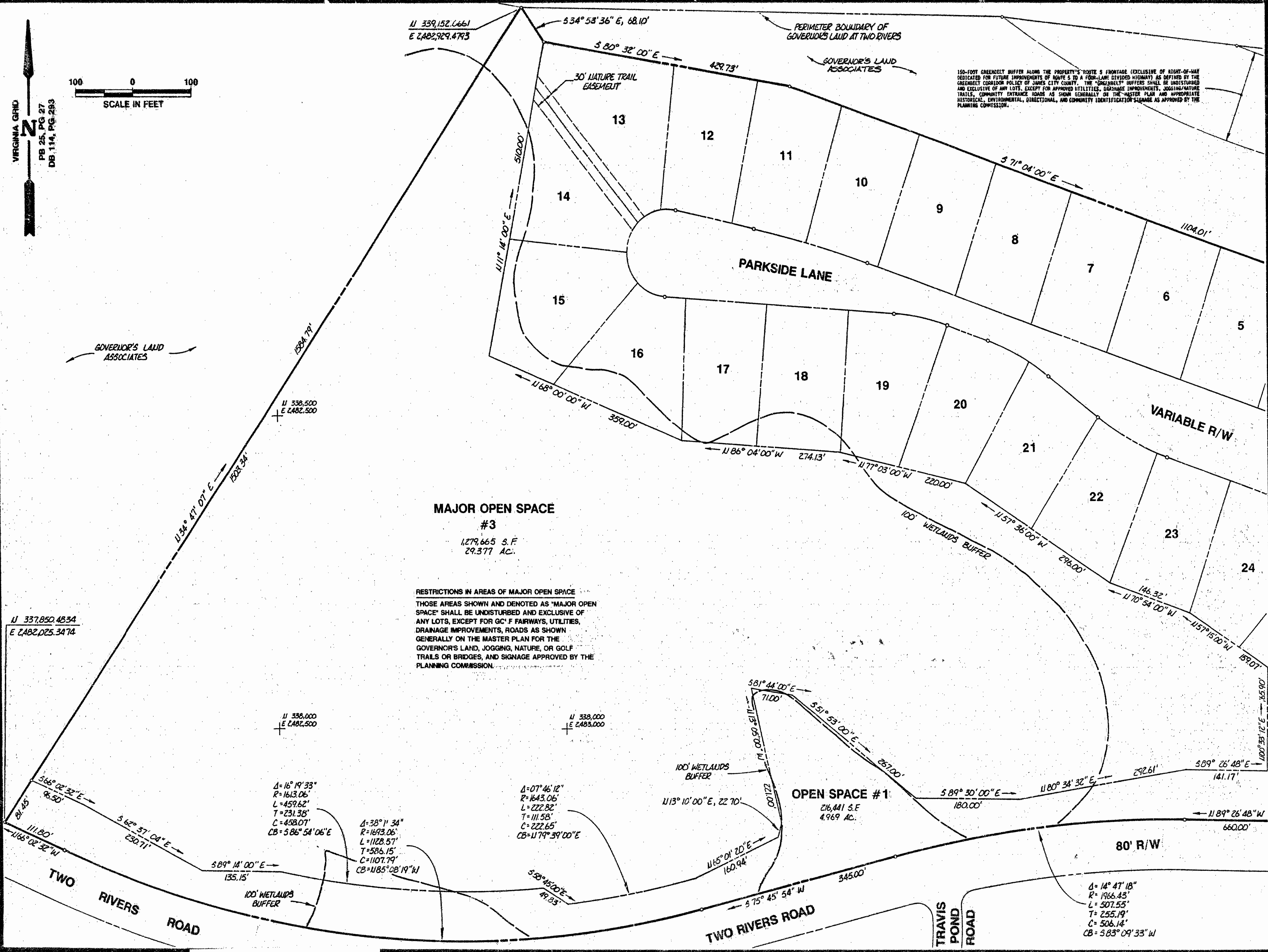


VIRGINIA GRID

PB 25, PG 27
DB 114, PG 283



150-FOOT GREENBELT BUFFER ALONG THE PROPERTY'S ROUTE 5 FRONTAGE (EXCLUSIVE OF RIGHT-OF-WAY DEDICATED FOR FUTURE IMPROVEMENTS OF ROUTE 5 TO A FOUR-LANE DIVIDED HIGHWAY) AS DEFINED BY THE GREENBELT CORRIDOR POLICY OF JAMES CITY COUNTY. THE "GREENBELT" BUFFERS SHALL BE UNDISTURBED AND EXCLUSIVE OF ANY LOTS, EXCEPT FOR APPROVED UTILITIES, DRAINAGE IMPROVEMENTS, JOGGING/NATURE TRAILS, COMMUNITY ENTRANCE ROADS AS SHOWN GENERALLY ON THE MASTER PLAN AND APPROPRIATE HISTORICAL, ENVIRONMENTAL, DIRECTIONAL, AND COMMUNITY IDENTIFICATION SIGNS AS APPROVED BY THE PLANNING COMMISSION.



MAJOR OPEN SPACE #3
1,279,665 S.F.
29.377 AC.

RESTRICTIONS IN AREAS OF MAJOR OPEN SPACE
THOSE AREAS SHOWN AND DENOTED AS "MAJOR OPEN SPACE" SHALL BE UNDISTURBED AND EXCLUSIVE OF ANY LOTS, EXCEPT FOR GC/F FAIRWAYS, UTILITIES, DRAINAGE IMPROVEMENTS, ROADS AS SHOWN GENERALLY ON THE MASTER PLAN FOR THE GOVERNOR'S LAND, JOGGING, NATURE, OR GOLF TRAILS OR BRIDGES, AND SIGNAGE APPROVED BY THE PLANNING COMMISSION.

OPEN SPACE #1
216,441 S.F.
4.969 AC.

U 337,850.4834
E 2482,025.3474

U 338,000
E 2482,500

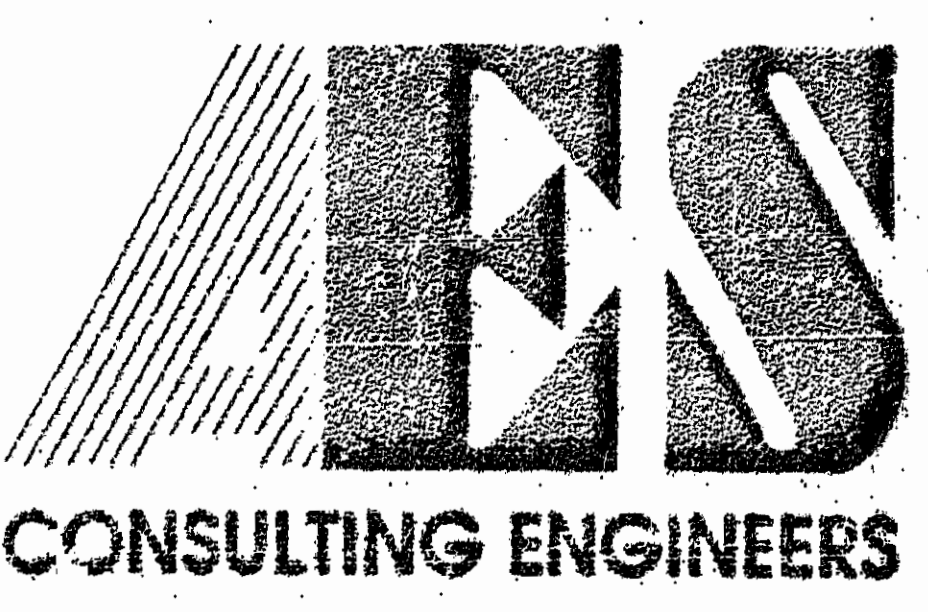
U 338,000
E 2483,000

$\Delta = 16^\circ 19' 33''$
 $R = 1613.06'$
 $L = 459.62'$
 $T = 231.38'$
 $C = 458.07'$
 $CB = 586^\circ 54' 06'' E$

$\Delta = 38^\circ 11' 34''$
 $R = 1693.06'$
 $L = 1128.57'$
 $T = 586.15'$
 $C = 1107.79'$
 $CB = 1185^\circ 08' 19'' W$

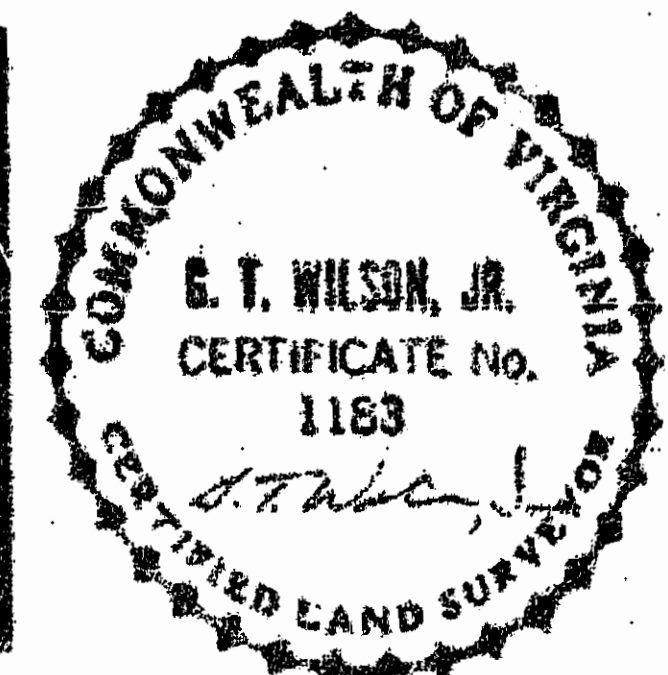
$\Delta = 07^\circ 46' 12''$
 $R = 1643.06'$
 $L = 222.82'$
 $T = 111.58'$
 $C = 222.65'$
 $CB = 1179^\circ 39' 00'' E$

$\Delta = 14^\circ 47' 18''$
 $R = 1966.43'$
 $L = 507.55'$
 $T = 255.19'$
 $C = 506.14'$
 $CB = 383^\circ 09' 33'' W$



5248 Olde Towne Road, Suite 1
Williamsburg, Virginia 23188
(804) 253-0040
Fax (804) 220-8994

PLAT OF
PARKSIDE
THE
GOVERNOR'S LAND
At Two Rivers
POWhatan District JAMES CITY COUNTY VIRGINIA



No.	DATE	REVISION / COMMENT / NOTE	BY

Designed AES	Drawn AES
Scale 1"=100'	Date DEC. 1991
Project No. 7173	
Drawing No. 4 of 4	