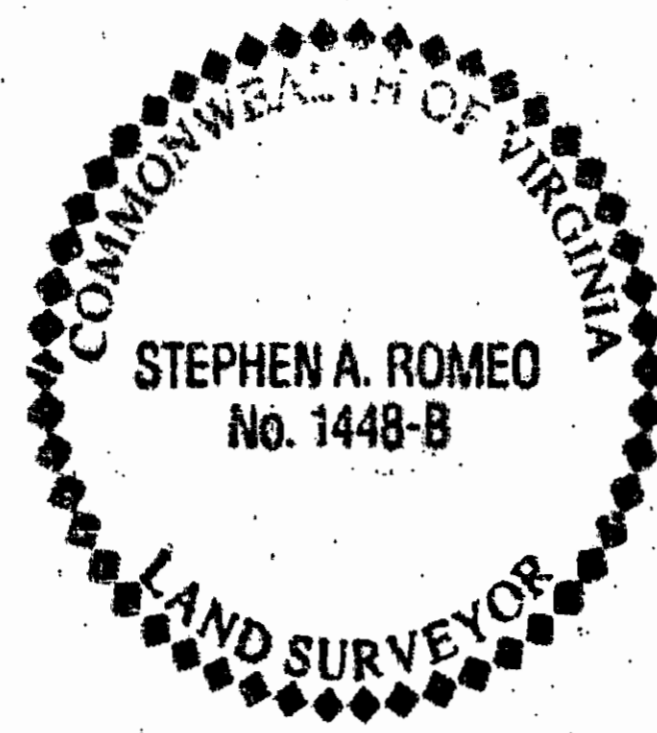


SURVEYOR'S CERTIFICATE

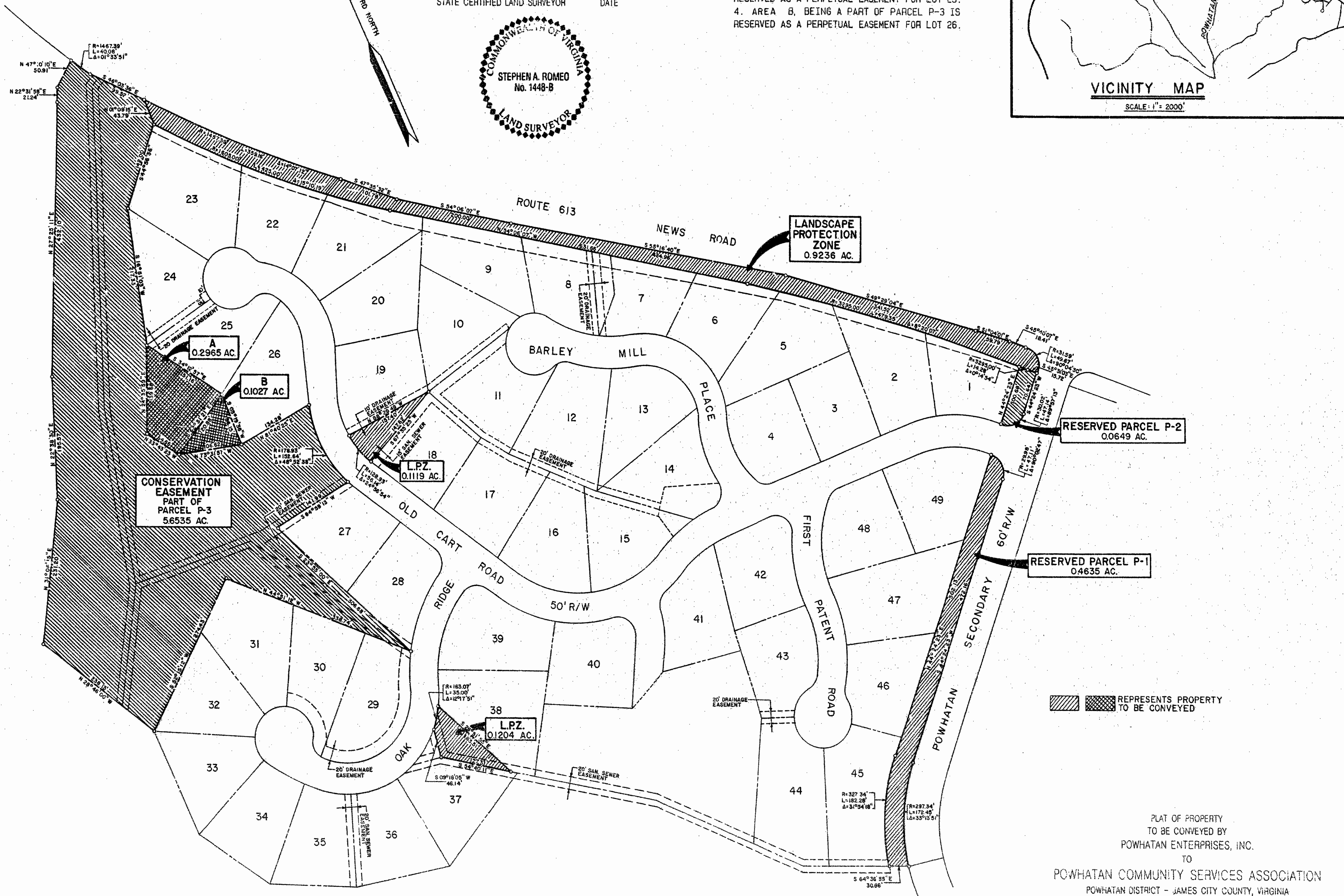
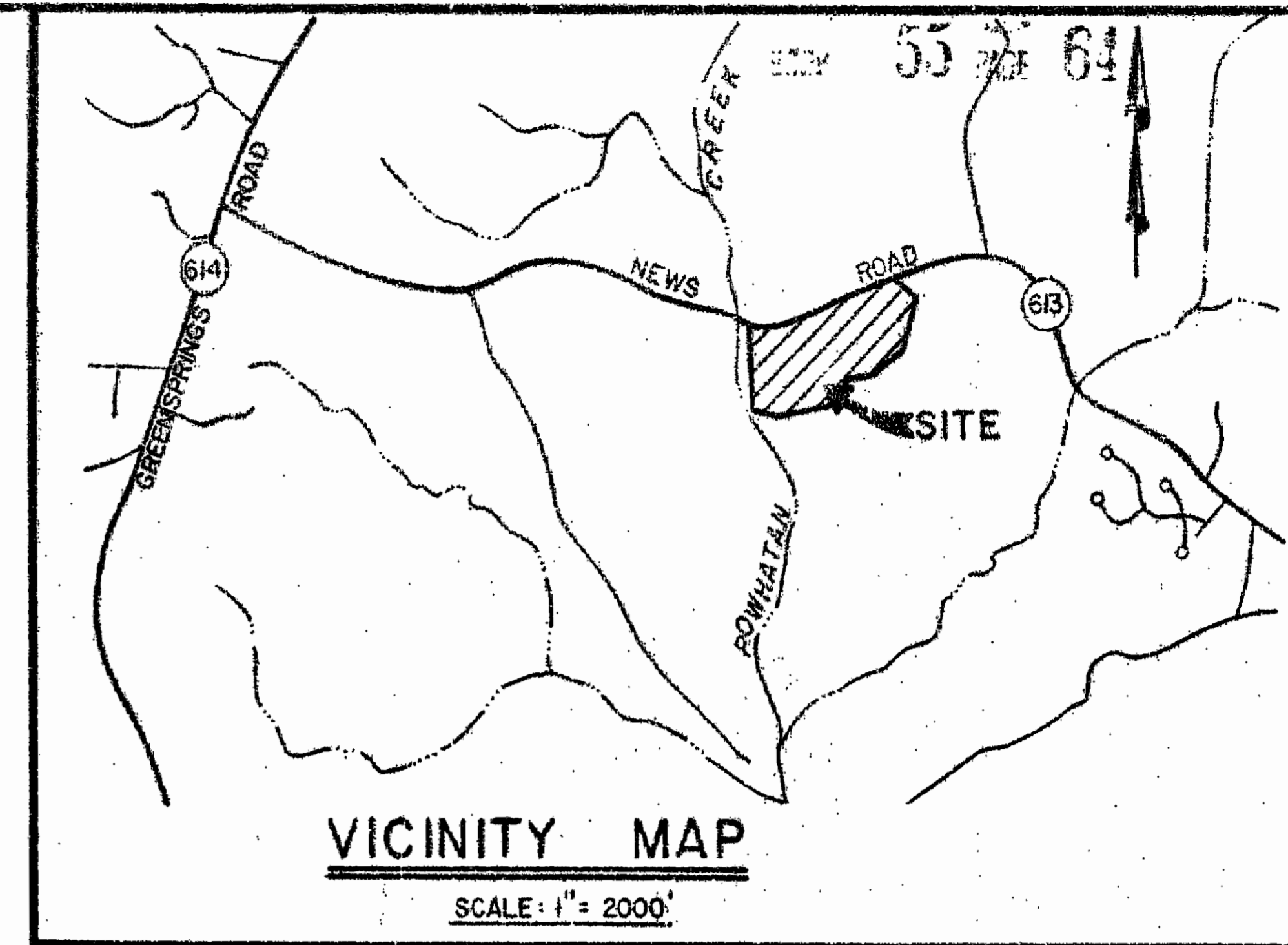
I HEREBY CERTIFY THAT TO THE BEST OF MY KNOWLEDGE AND BELIEF, THIS PLAT IS CORRECT AND COMPLIES WITH THE MINIMUM PROCEDURES AND STANDARDS ESTABLISHED BY THE VIRGINIA STATE BOARD OF ARCHITECTS, PROFESSIONAL ENGINEERS, LAND SURVEYORS AND CERTIFIED LANDSCAPE ARCHITECTS.

Stephen Romeo 2/2/90
STATE CERTIFIED LAND SURVEYOR DATE



NOTES:

1. REFER TO PLAT OF POWHATAN OF WILLIAMSBURG PHASE I (P.B. 36, PG. 80) FOR RESERVED PARCELS AND LANDSCAPE PROTECTION ZONE (L.P.Z.).
2. REFER TO PLAT OF CONSERVATION EASEMENT (L & M INDEX 3308W) FOR CONSERVATION EASEMENT, PART OF PARCEL P-3.
3. AREA A, BEING A PART OF PARCEL P-3 IS RESERVED AS A PERPETUAL EASEMENT FOR LOT 25.
4. AREA B, BEING A PART OF PARCEL P-3 IS RESERVED AS A PERPETUAL EASEMENT FOR LOT 26.



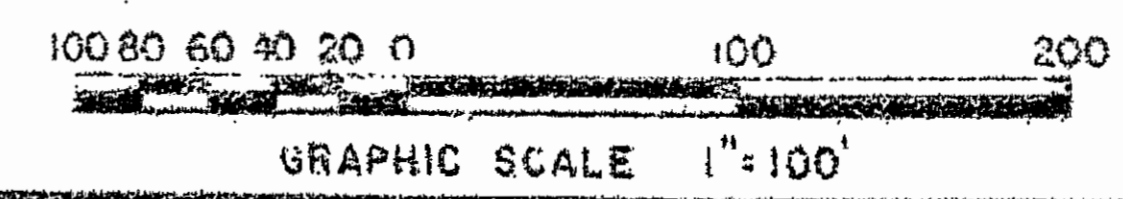
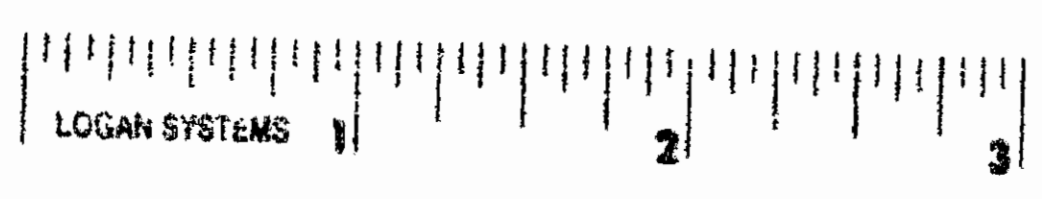
REPRESENTS PROPERTY TO BE CONVEYED

PLAT OF PROPERTY TO BE CONVEYED BY POWHATAN ENTERPRISES, INC. TO

POWHATAN COMMUNITY SERVICES ASSOCIATION

POWHATAN DISTRICT - JAMES CITY COUNTY, VIRGINIA
SCALE: 1" = 100' 7/31/90

LANGLEY and McDONALD
A PROFESSIONAL CORPORATION
ENGINEERS-PLANNERS-SURVEYORS
VIRGINIA BEACH & WILLIAMSBURG, VIRGINIA



1200
revised 10/24/90
10/24/90
557
250
W. L. McDonald