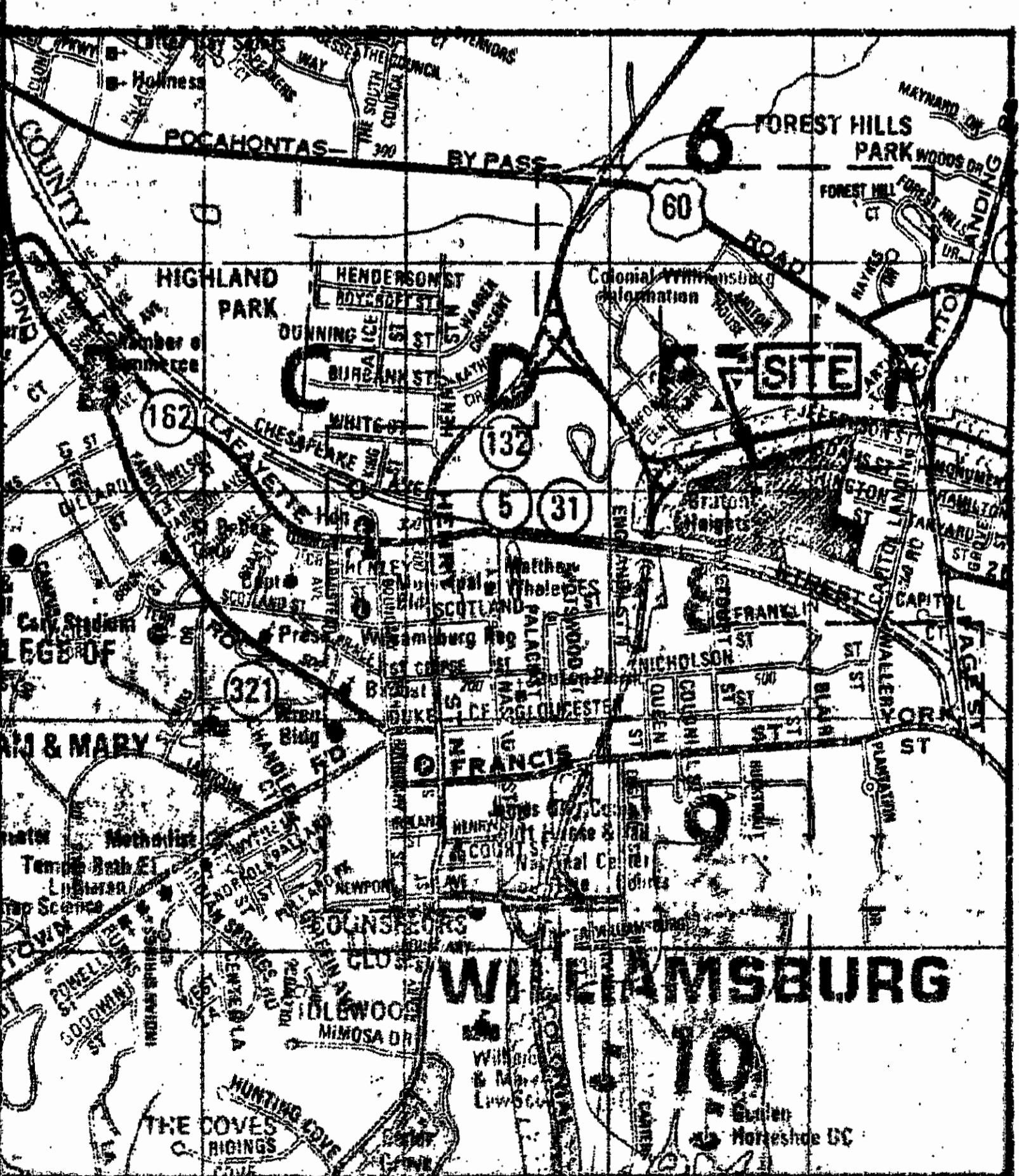
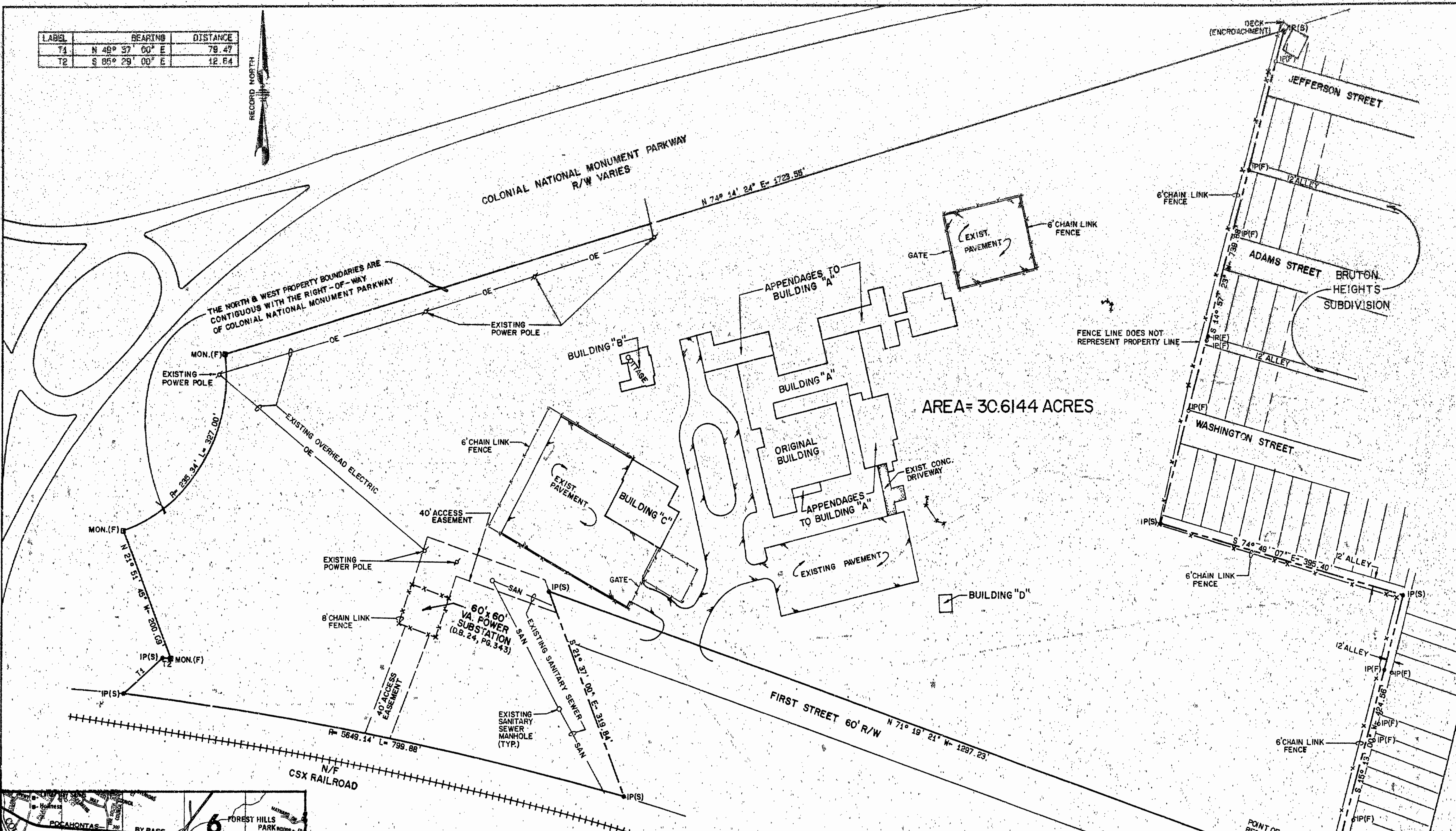
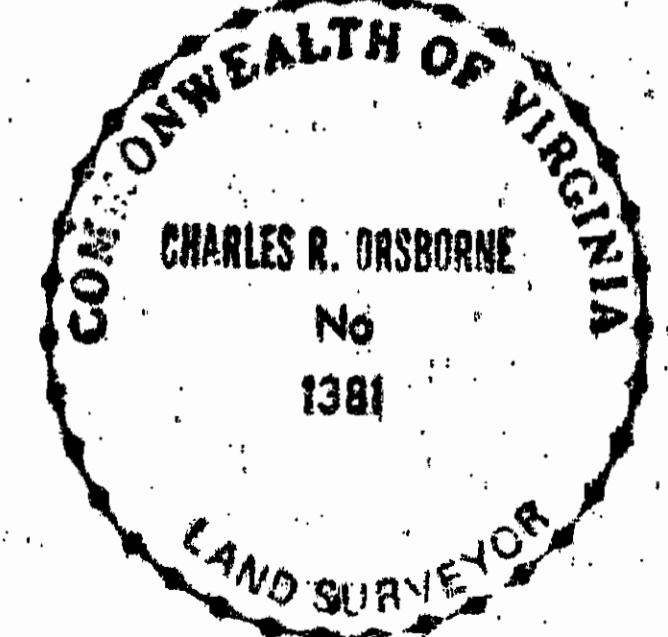


LABEL	BEARING	DISTANCE
T1	N 49° 37' 00" E	79.47
T2	S 85° 29' 00" E	12.64



I HEREBY CERTIFY THAT THIS SURVEY, TO THE BEST OF MY KNOWLEDGE AND BELIEF IS CORRECT AND COMPLIES WITH THE MINIMUM PROCEDURES AND STANDARDS ESTABLISHED BY THE VIRGINIA STATE BOARD OF ARCHITECTS, PROFESSIONAL ENGINEERS, LAND SURVEYORS, AND CERTIFIED LANDSCAPE ARCHITECTS.

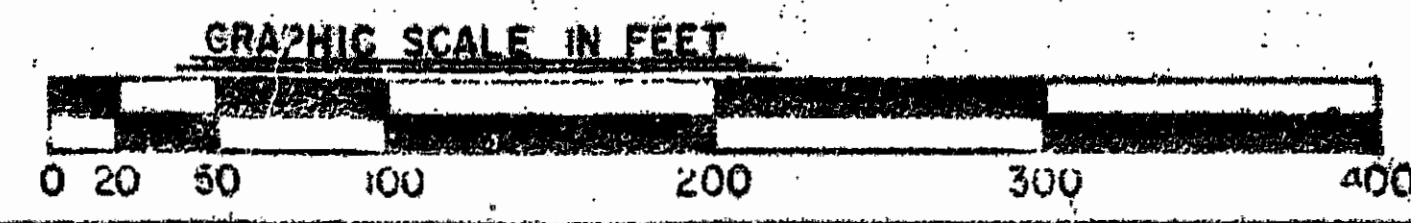
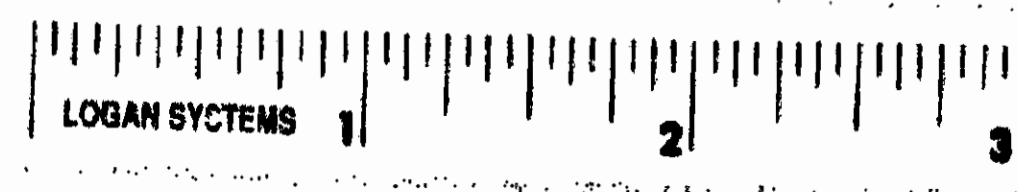
SIGNED: *Charles R. Osborne* DATE: *9/28/90*



- LEGEND**
- IP(F) - IRON PIN (FOUND)
 - IP(S) - IRON PIN (SET)
 - MON.(F) - MONUMENT (FOUND)

2:37 p.m.
164 of 1990
97 to 360
W. Swack

PLAT OF
BRUTON HEIGHTS SCHOOL
 STANDING IN THE NAME OF
 THE SCHOOL BOARD OF THE CITY OF WILLIAMSBURG
 TO BE CONVEYED TO
COLONIAL WILLIAMSBURG FOUNDATION
 DATE: 9/27/90 SCALE: 1"=100'
LANGLEY AND McDONALD, P.C.
 ENGINEERS-PLANNERS-SURVEYORS
 VIRGINIA BEACH-WILLIAMSBURG, VIRGINIA



REVISED: 1/9/92 ADD NORTH & WEST BOUNDARY
 NOTE & INTERSECTION T.I.E.
 REVISED: 12/28/90 LABEL BLDG. 'B'
 REVISED: 11/15/90 BLDG. DESIGNATION
DWG. NO. 3782 W