

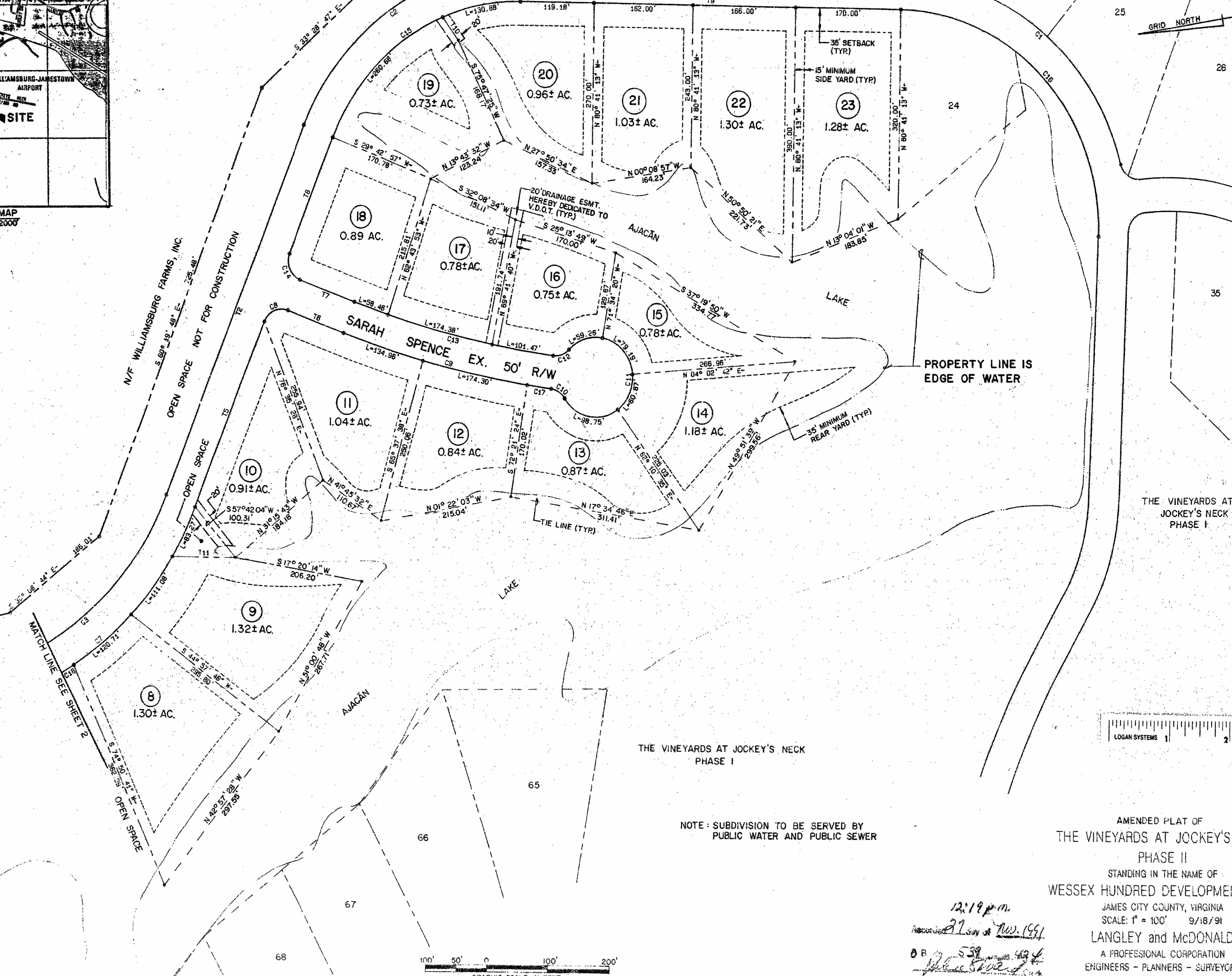
VICINITY MAP  
SCALE: 1" = 2000'

N/F WILLIAMSBURG FARMS, INC.

S 08° 42' 04" W 1326.36'

OPEN SPACE NOT FOR CONSTRUCTION

JOCKEY'S NECK TRAIL EX. 50' R/W



GRID NORTH

N/F WILLIAMSBURG FARMS, INC.  
OPEN SPACE NOT FOR CONSTRUCTION

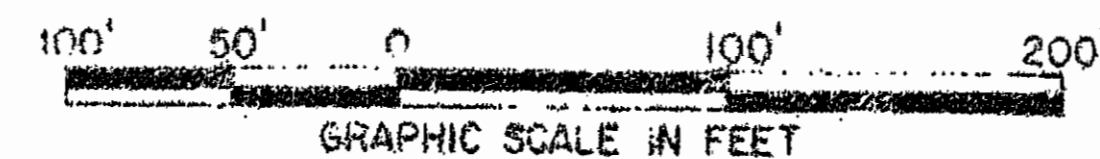
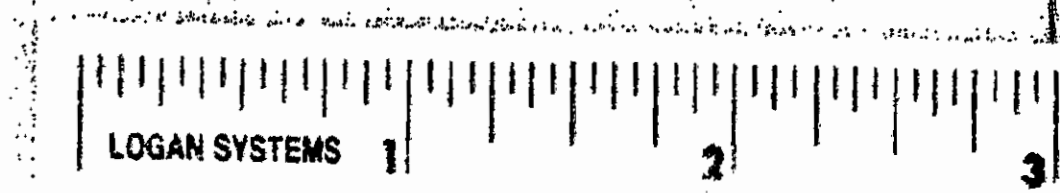
MATCH LINE SEE SHEET 2

PROPERTY LINE IS  
EDGE OF WATER

THE VINEYARDS AT  
JOCKEY'S NECK  
PHASE I

THE VINEYARDS AT JOCKEY'S NECK  
PHASE I

NOTE: SUBDIVISION TO BE SERVED BY  
PUBLIC WATER AND PUBLIC SEWER



AMENDED PLAT OF  
THE VINEYARDS AT JOCKEY'S NECK  
PHASE II  
STANDING IN THE NAME OF  
WESSEX HUNDRED DEVELOPMENT, INC.  
JAMES CITY COUNTY, VIRGINIA  
SCALE: 1" = 100' 9/18/91  
LANGLEY and McDONALD  
A PROFESSIONAL CORPORATION  
ENGINEERS - PLANNERS - SURVEYORS  
VIRGINIA BEACH & WILLIAMSBURG, VIRGINIA  
SHEET 1 OF 2

12:19 p.m.  
27 Nov 1991  
D.B. 538  
[Signature]