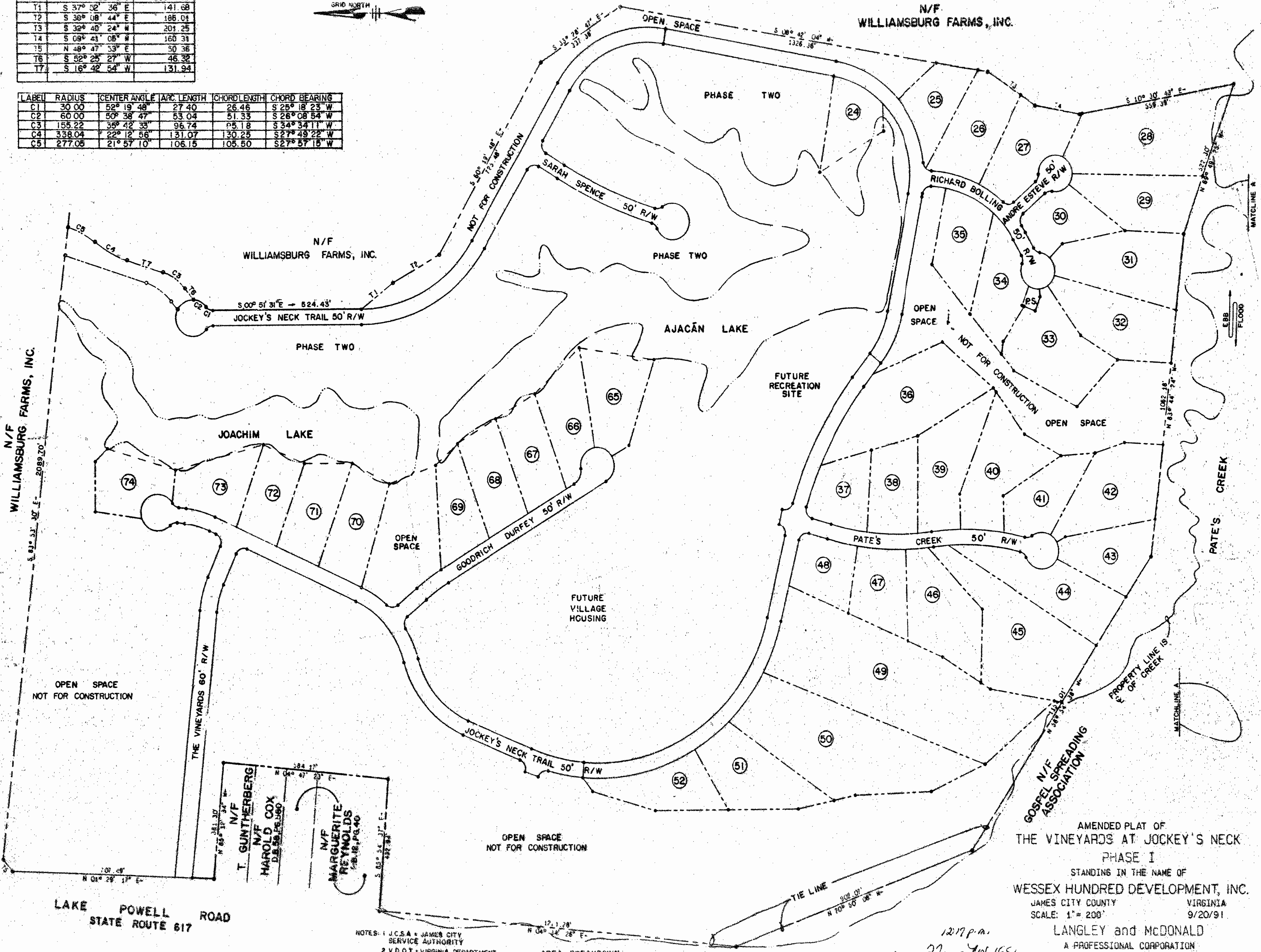
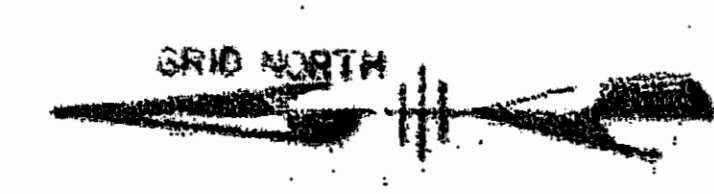


LABEL	BEARING	DISTANCE
T1	S 37° 52' 36" E	141.68
T2	S 38° 08' 44" E	186.04
T3	S 32° 40' 24" W	201.25
T4	S 08° 41' 05" W	160.31
T5	N 48° 47' 53" E	50.36
T6	S 52° 25' 27" W	46.32
T7	S 16° 42' 54" W	131.94

LABEL	RADIUS	CENTER ANGLE	ARC LENGTH	CHORD LENGTH	CHORD BEARING
C1	30.00	52° 19' 48"	27.40	26.46	S 25° 18' 23" W
C2	60.00	50° 38' 47"	53.04	51.33	S 26° 08' 54" W
C3	155.22	35° 42' 33"	96.74	95.18	S 34° 34' 11" W
C4	338.04	22° 12' 56"	131.07	130.25	S 27° 49' 22" W
C5	277.05	21° 57' 10"	106.15	105.50	S 27° 57' 15" W



N/F WILLIAMSBURG FARMS, INC.

N/F WILLIAMSBURG FARMS, INC.

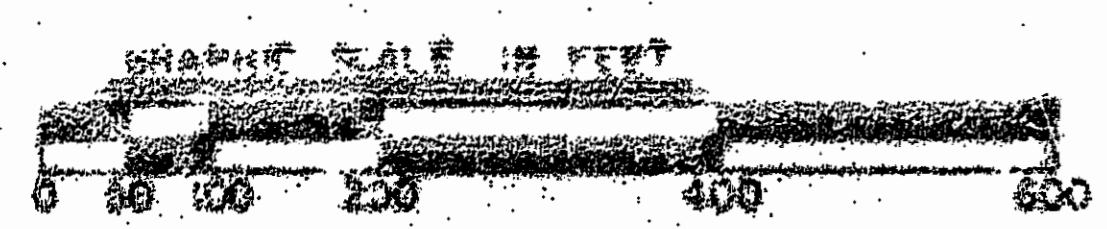
N/F WILLIAMSBURG FARMS, INC.

AMENDED PLAT OF  
 THE VINEYARDS AT JOCKEY'S NECK  
 PHASE I  
 STANDING IN THE NAME OF  
 WESSEX HUNDRED DEVELOPMENT, INC.  
 JAMES CITY COUNTY VIRGINIA  
 SCALE: 1" = 200' 9/20/91  
 LANGLEY and McDONALD  
 A PROFESSIONAL CORPORATION  
 ENGINEERS-PLANNERS-SURVEYORS  
 VIRGINIA BEACH & WILLIAMSBURG, VIRGINIA  
 SHEET: 1 OF 5

- NOTES: 1 J.C.S.A. = JAMES CITY SERVICE AUTHORITY  
 2 V.D.O.T. = VIRGINIA DEPARTMENT OF TRANSPORTATION  
 3 PS = PUMP STATION  
 4 J.C.C. = JAMES CITY COUNTY

AREA BREAKDOWN  
 1. AREA OF PARCEL = 222.52 ± ACS.  
 2. AREA OF LOTS = 65.62 ± ACS.  
 3. AREA OF R/W = 15.65 ACS.  
 4. AREA OF REMAINDER = 137.05 ± ACS.

1217 p.m.  
 27 JUL 1991  
 558 423



LOGAN SYSTEMS 1 2 3