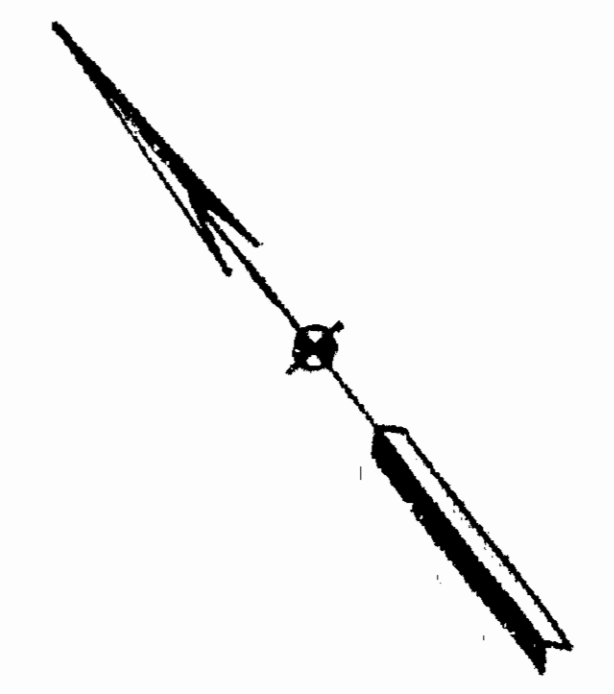
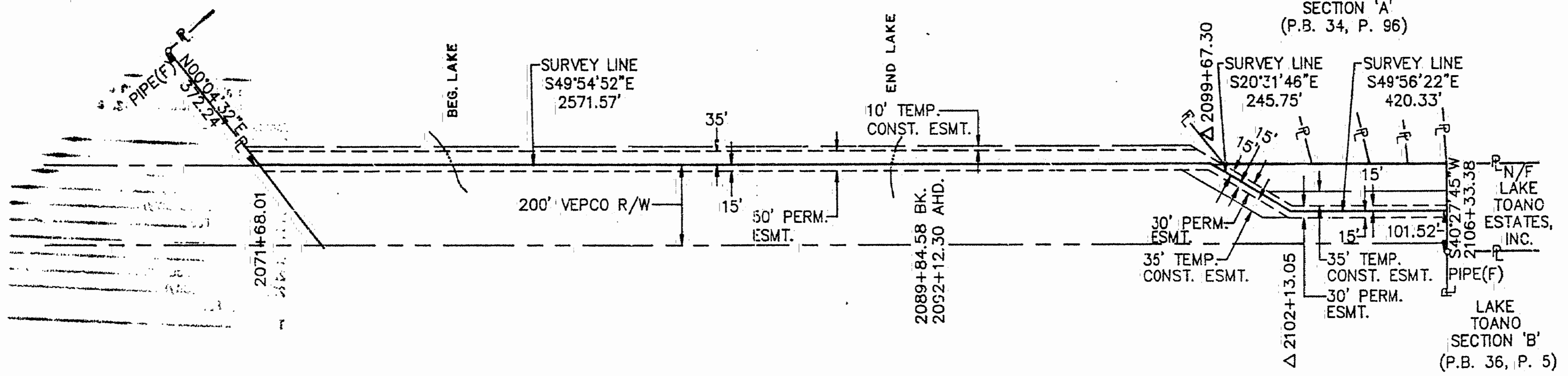


CITY OF NEWPORT NEWS,  
A MUNICIPAL CORPORATION



N/F  
MARY M. BRANCH, ET AL

LAKE  
TOANO  
SECTION 'A'  
(P.B. 34, P. 96)



AREA INSIDE VEPCO R/W:  
PERM: 1.34 AC.  
TEMP: 0.56 AC.

AREA OUTSIDE VEPCO R/W:  
PERM: 2.08 AC.  
TEMP: 0.59 AC.

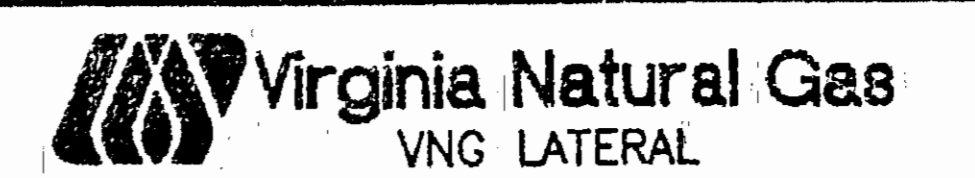
MERIDIAN SOURCE: VIRGINIA COORDINATE SYSTEM OF 1927 (SOUTH ZONE)



8:53 Am.

Recorded <sup>554</sup> day of September, 1991

D. B. No. 531; pages 310  
*Walter Sward* Clerk



PLAT TO ACCOMPANY RIGHT-OF-WAY  
AGREEMENT WITH

CITY OF NEWPORT NEWS,  
A MUNICIPAL CORPORATION

DISTRICT/TOWNSHIP	COUNTY	STATE
STONEHOUSE	JAMES CITY	VA

SURVEY BY SCHNEIDER ENGINEERS

6/21/91	6/17/91	1/31/91	12/07/90
4	3	2	1
ADDED LAKE LINES	REVISED ALIGNMENT	NAME CHGE REV. TEMP. ESMT.	REVISED ALIGNMENT
	RSA	RSA	RSA

SCALE	DATE	NO.
1"=300'	6/06/90	169