

LOT CURVE DATA

Table with 7 columns: NO., DELTA, RADIUS, LENGTH, TANGENT, CHORD, CHORD BEARING. Contains data for lots 1A through 16B.

RIGHT-OF-WAY'S CURVE DATA

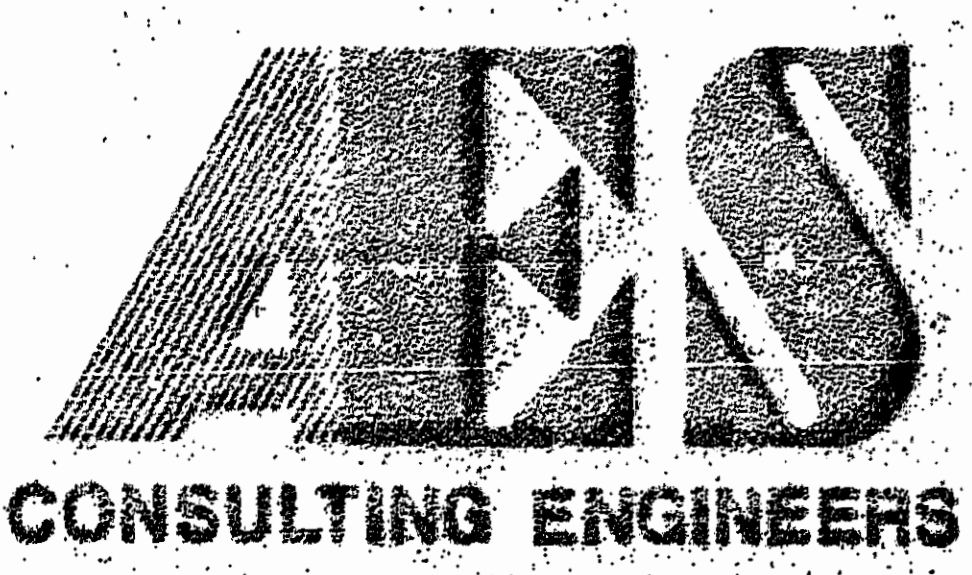
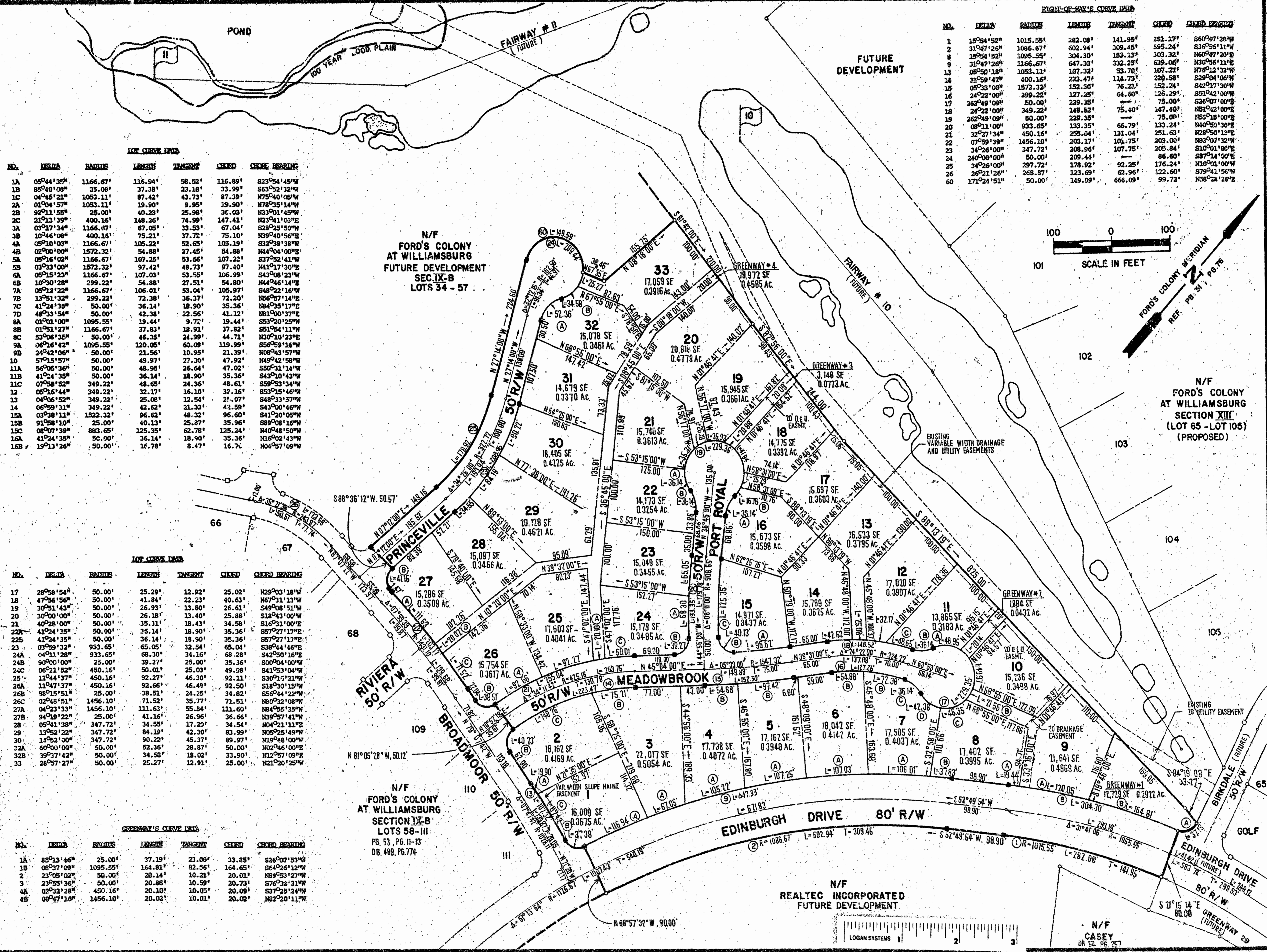
Table with 7 columns: NO., DELTA, RADIUS, LENGTH, TANGENT, CHORD, CHORD BEARING. Contains data for right-of-way curves 1 through 60.

LOT CURVE DATA

Table with 7 columns: NO., DELTA, RADIUS, LENGTH, TANGENT, CHORD, CHORD BEARING. Contains data for lots 17 through 33.

GREENWAY'S CURVE DATA

Table with 7 columns: NO., DELTA, RADIUS, LENGTH, TANGENT, CHORD, CHORD BEARING. Contains data for greenways 1A through 4B.



5248 Olde Towne Road, Suite 1
Williamsburg, Virginia 23188
(804) 253-0040
Fax (804) 220-8994

PLAT OF
FORD'S COLONY
@ WILLIAMSBURG
SECTION IX-B, LOT 1 - LOT 33
BERKELEY DISTRICT JAMES CITY COUNTY VIRGINIA

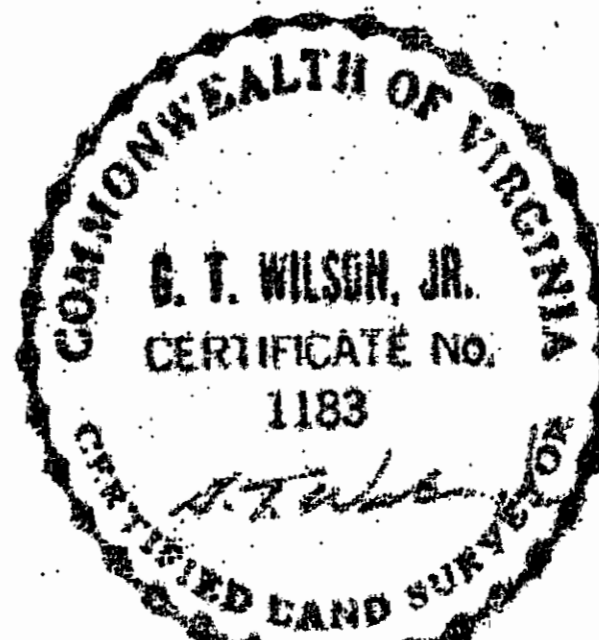


Table with 3 columns: NO., DATE, REVISION / COMMENT / NOTE. Includes a scale bar and project information.

Designed LCA/AES Drawn BB
Scale Date
1"=100' JULY, 1991
Project No. 5652
Drawing No. 2 of 2