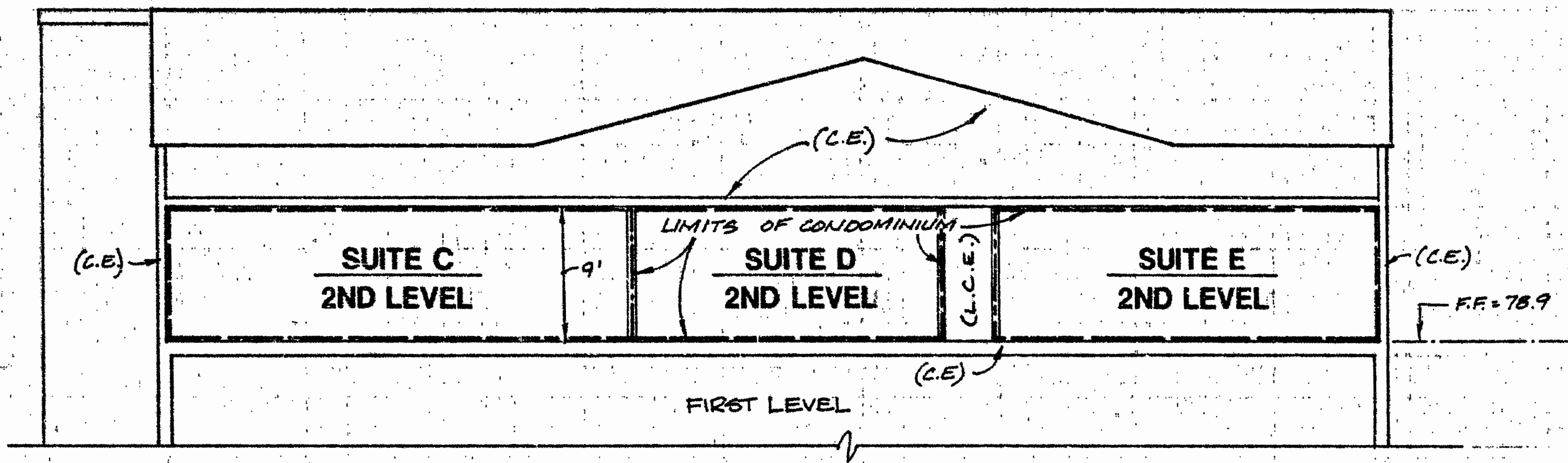


(L.C.E.) = LIMITED COMMON ELEMENT  
(C.E.) = COMMON ELEMENT

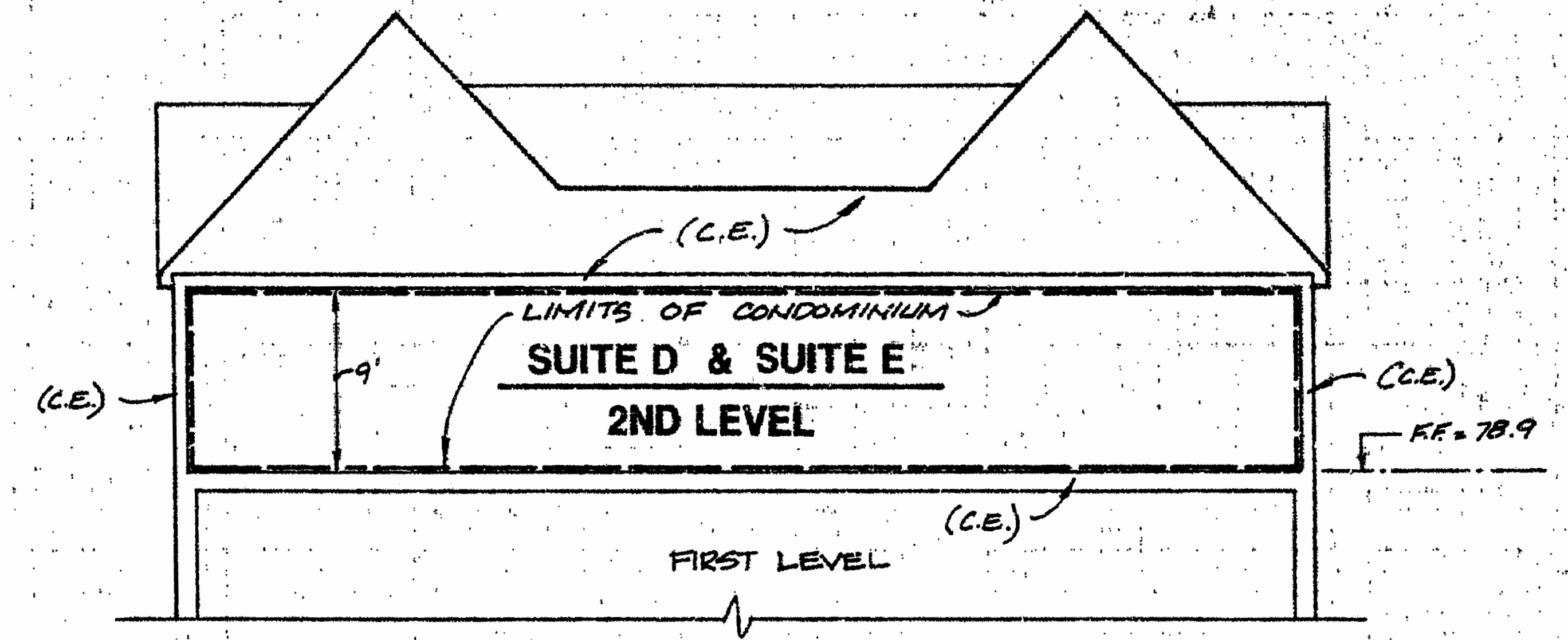
WE HEREBY CERTIFY THAT WE HAVE SURVEYED ALL OF THE UNITS OR PORTIONS THEREOF AND DO FURTHER CERTIFY THAT THESE PLANS ARE ACCURATE AND THEY COMPLY WITH SECTION 55-79.58(B) OF THE CODE OF VIRGINIA, AS AMENDED. ALL STRUCTURES ARE COMPLETE.

AES CONSULTING ENGINEERS

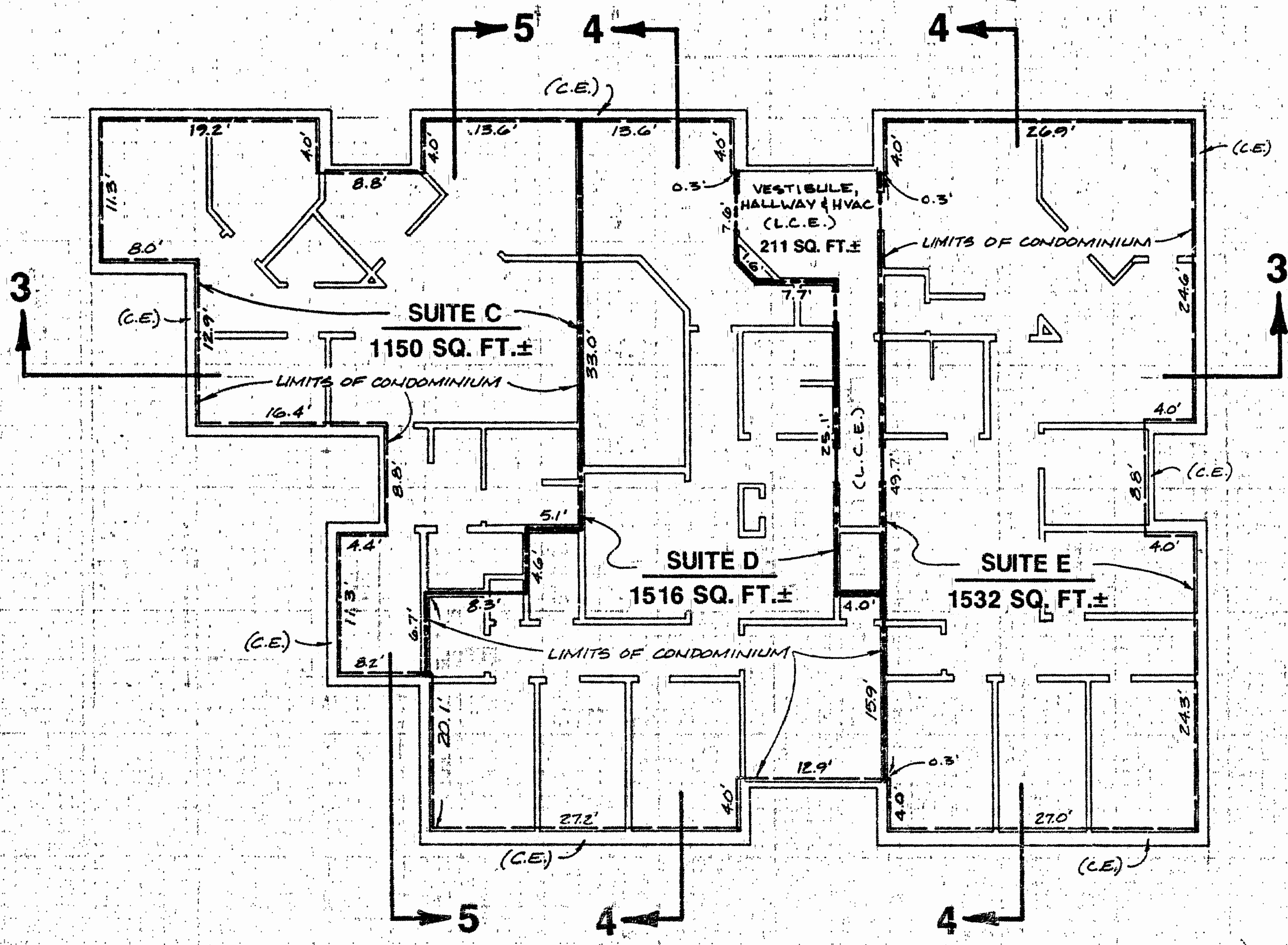
BY: *G.T. Wilson, Jr.*  
G. T. WILSON, JR., C.L.S.



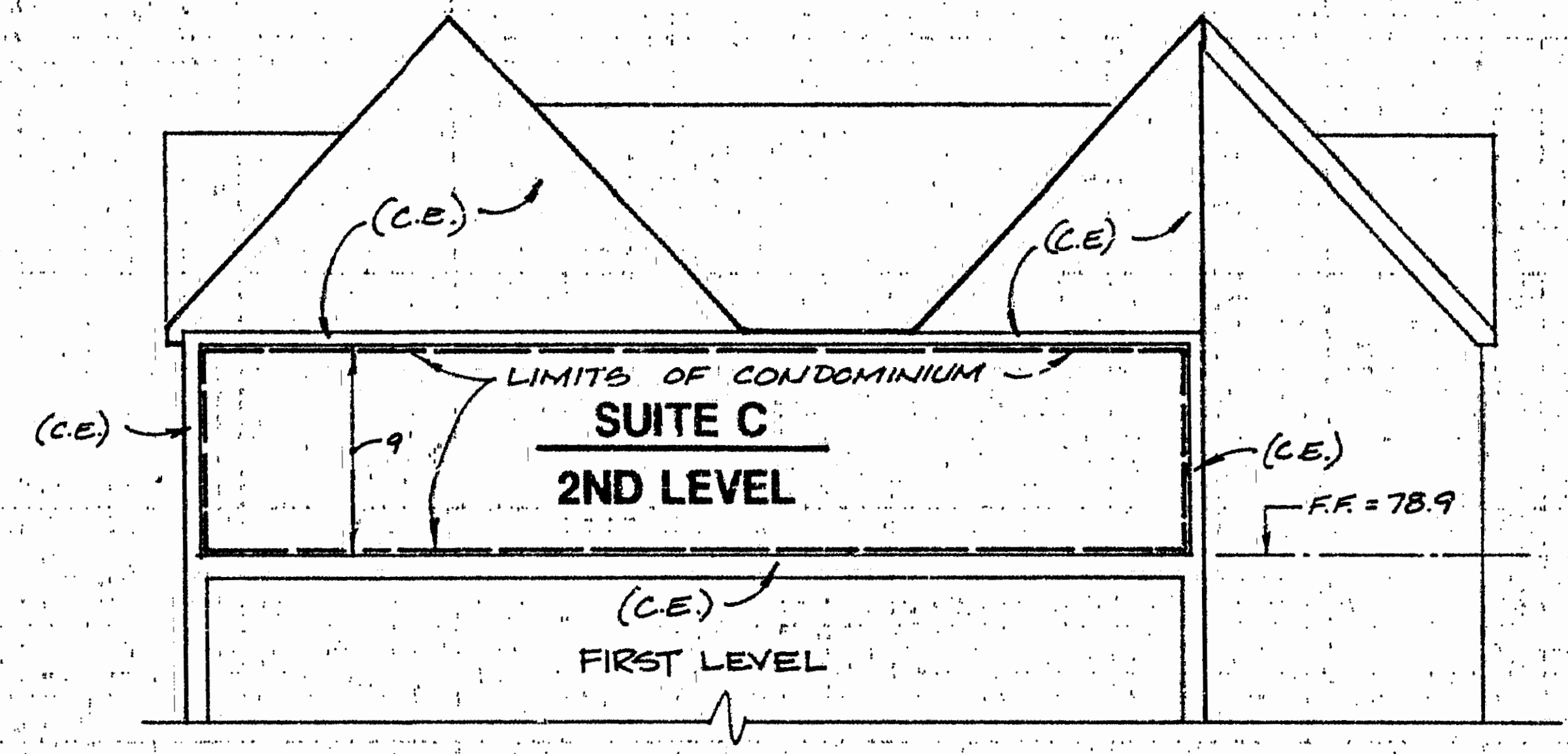
**SECTION 3**  
SCALE: 1"=10'



**SECTION 4**  
SCALE: 1"=10'



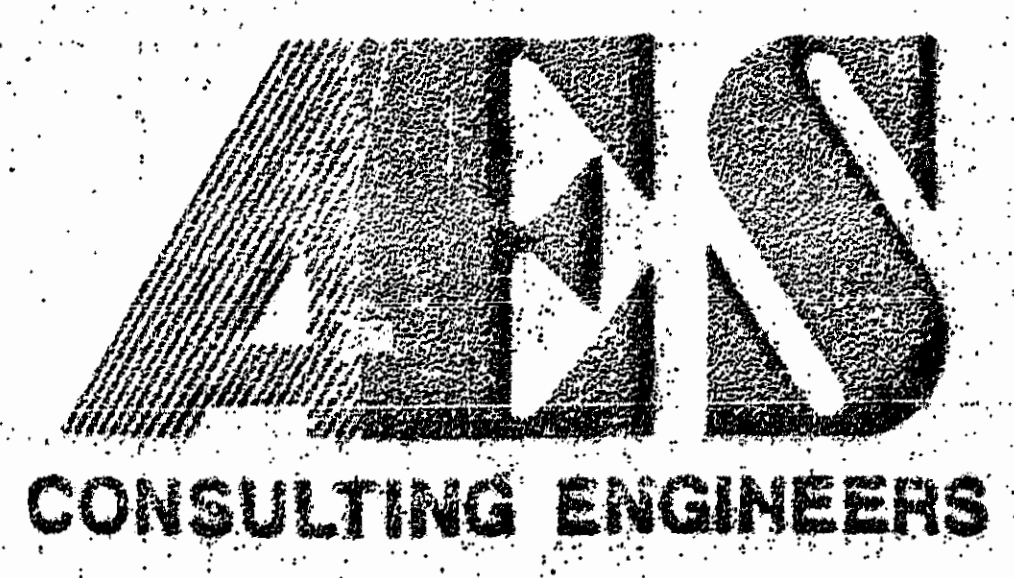
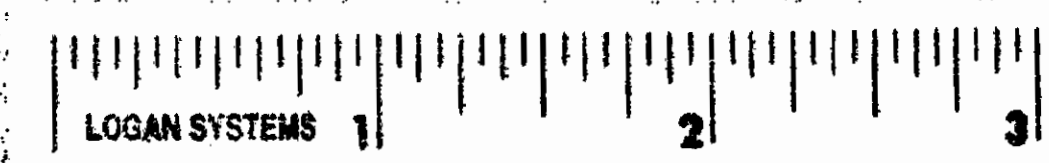
**PLAN VIEW (2ND LEVEL)**  
SCALE: 1"=10'



**SECTION 5**  
SCALE: 1"=10'

AREA TABULATION - 2ND LEVEL

SUITE C	1150 SQ. FT.±
SUITE D	1516 SQ. FT.±
SUITE E	1532 SQ. FT.±
VESTIBULE, HALLWAY & HVAC	211 SQ. FT.±
EXTERIOR WALL	282 SQ. FT.±
<b>TOTAL AREA 2ND LEVEL</b>	<b>4691 SQ. FT.±</b>



5248 Olde Towne Road, Suite 1  
Williamsburg, Virginia 23188  
(804) 253-0040  
Fax (804) 220-8994

EXHIBIT B  
**THE MEDICAL ARTS CENTRE CONDOMINIUMS**  
OWNER/DEVELOPER: ALVIN ANDERSON, TRUSTEE  
CITY OF WILLIAMSBURG VIRGINIA



No.	DATE	REVISION / COMMENT / NOTE	BY

Designed	Drawn
Scale	Date
1"=10'	6/21/91
Project No.	
7059	
Drawing No.	
3 of 3	