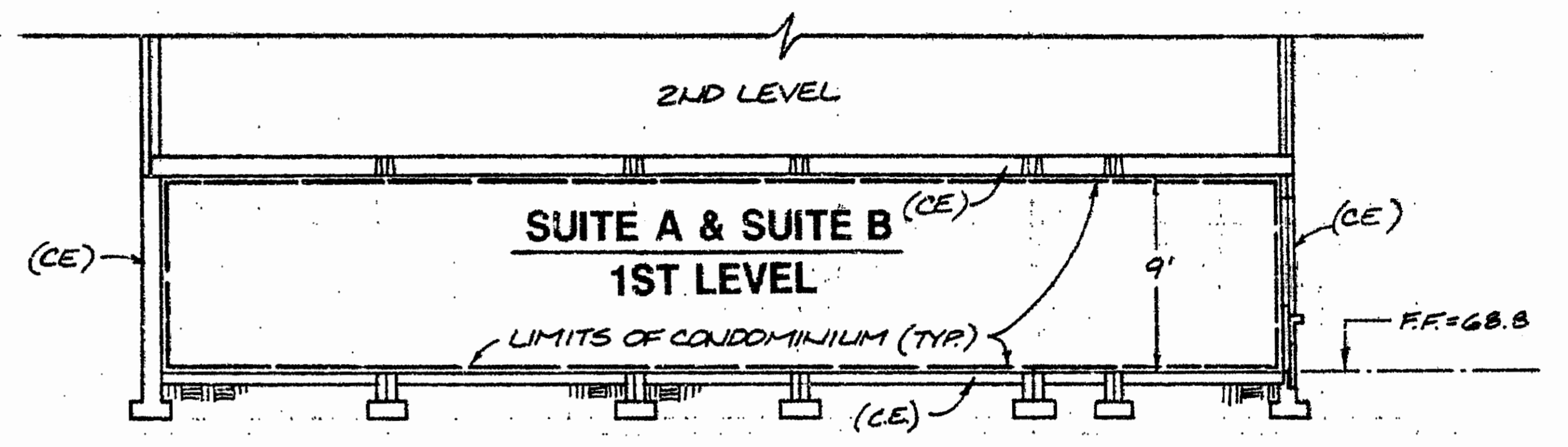
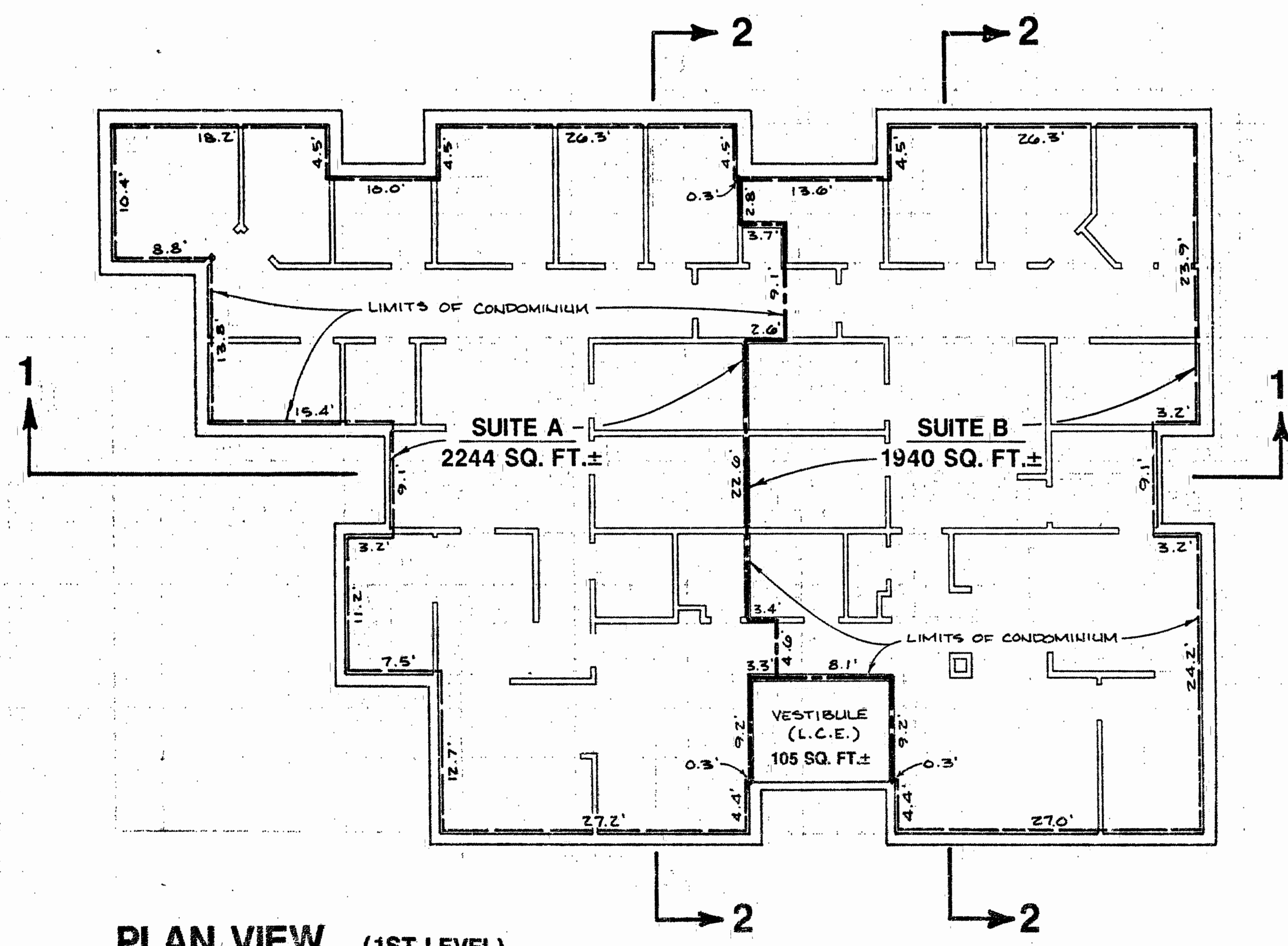


SECTION
SCALE: 1"=10' 1



SECTION
SCALE: 1"=10' 2



PLAN VIEW (1ST LEVEL)
SCALE: 1"=10'

AREA TABULATION - 1ST LEVEL

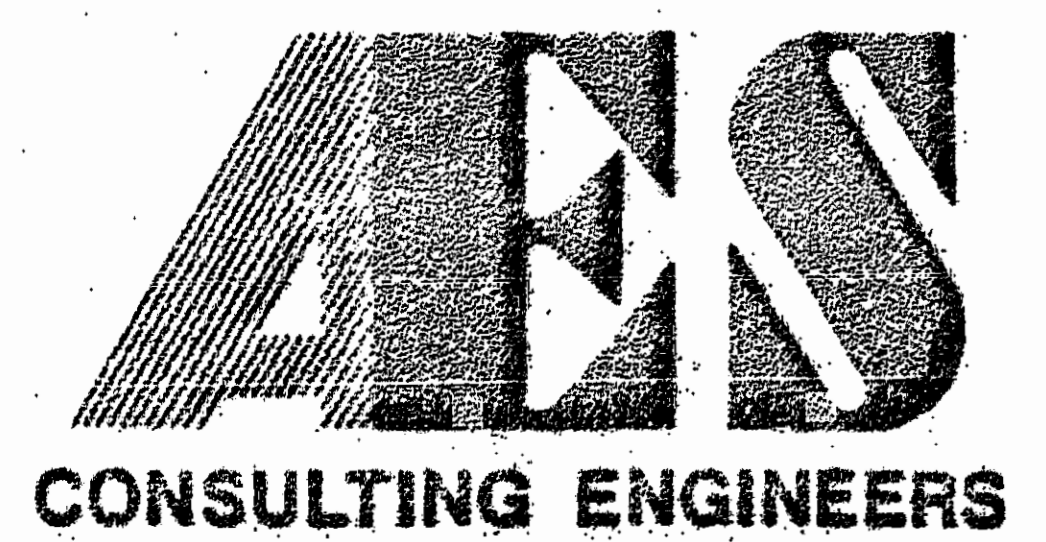
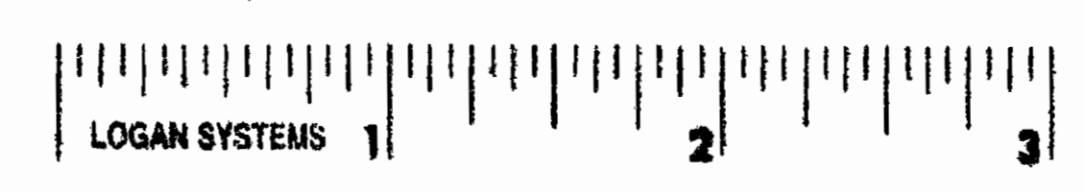
SUITE A	2244 SQ. FT.±
SUITE B	1940 SQ. FT.±
VESTIBULE	105 SQ. FT.±
EXTERIOR WALL	402 SQ. FT.±
TOTAL AREA 1ST LEVEL	4691 SQ. FT.±

(L.C.E.) = LIMITED COMMON ELEMENT
(C.E.) = COMMON ELEMENT

WE HEREBY CERTIFY THAT WE HAVE SURVEYED ALL OF THE UNITS OR PORTIONS THEREOF AND DO FURTHER CERTIFY THAT THESE PLANS ARE ACCURATE AND THEY COMPLY WITH SECTION 55-79.58(B) OF THE CODE OF VIRGINIA, AS AMENDED. ALL STRUCTURES ARE COMPLETE.

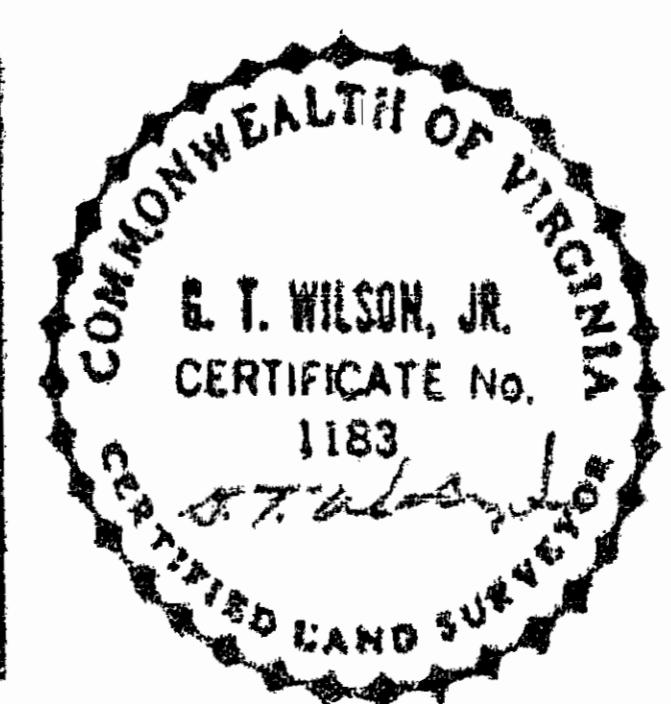
AES CONSULTING ENGINEERS

BY: *G. T. Wilson, Jr.*
G. T. WILSON, JR., C.L.S.



5248 Olde Towne Road, Suite 1
Williamsburg, Virginia 23188
(804) 253-0040
Fax (804) 220-8994

EXHIBIT B
THE MEDICAL ARTS CENTRE
CONDOMINIUMS
OWNER/DEVELOPER: ALVIN ANDERSON, TRUSTEE
CITY OF WILLIAMSBURG VIRGINIA



No.	DATE	REVISION / COMMENT / NOTE	BY

Designed	Drawn
Scale	Date
1"=10'	6/21/91
Project No.	
7059	
Drawing No.	
2 of 3	