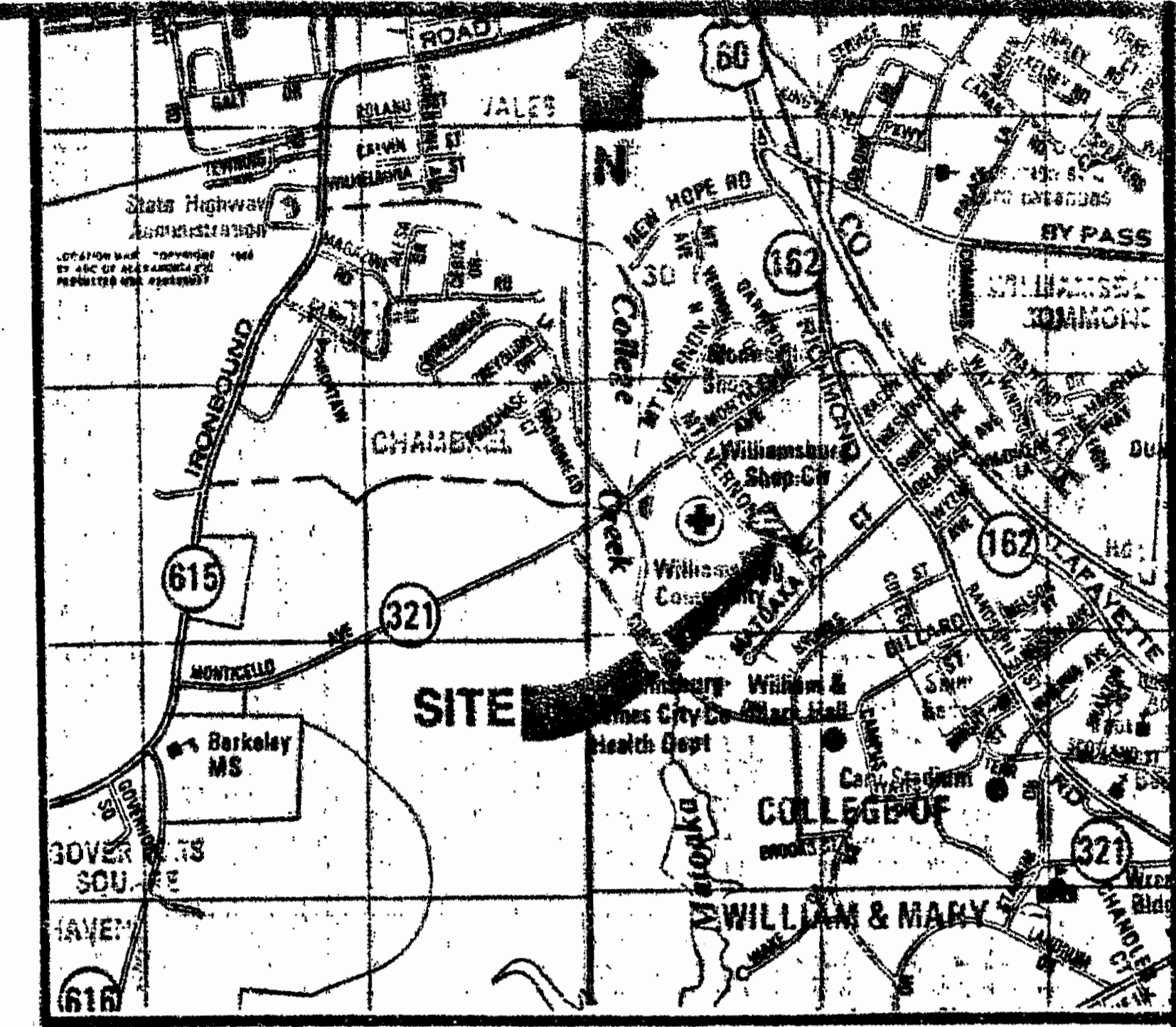
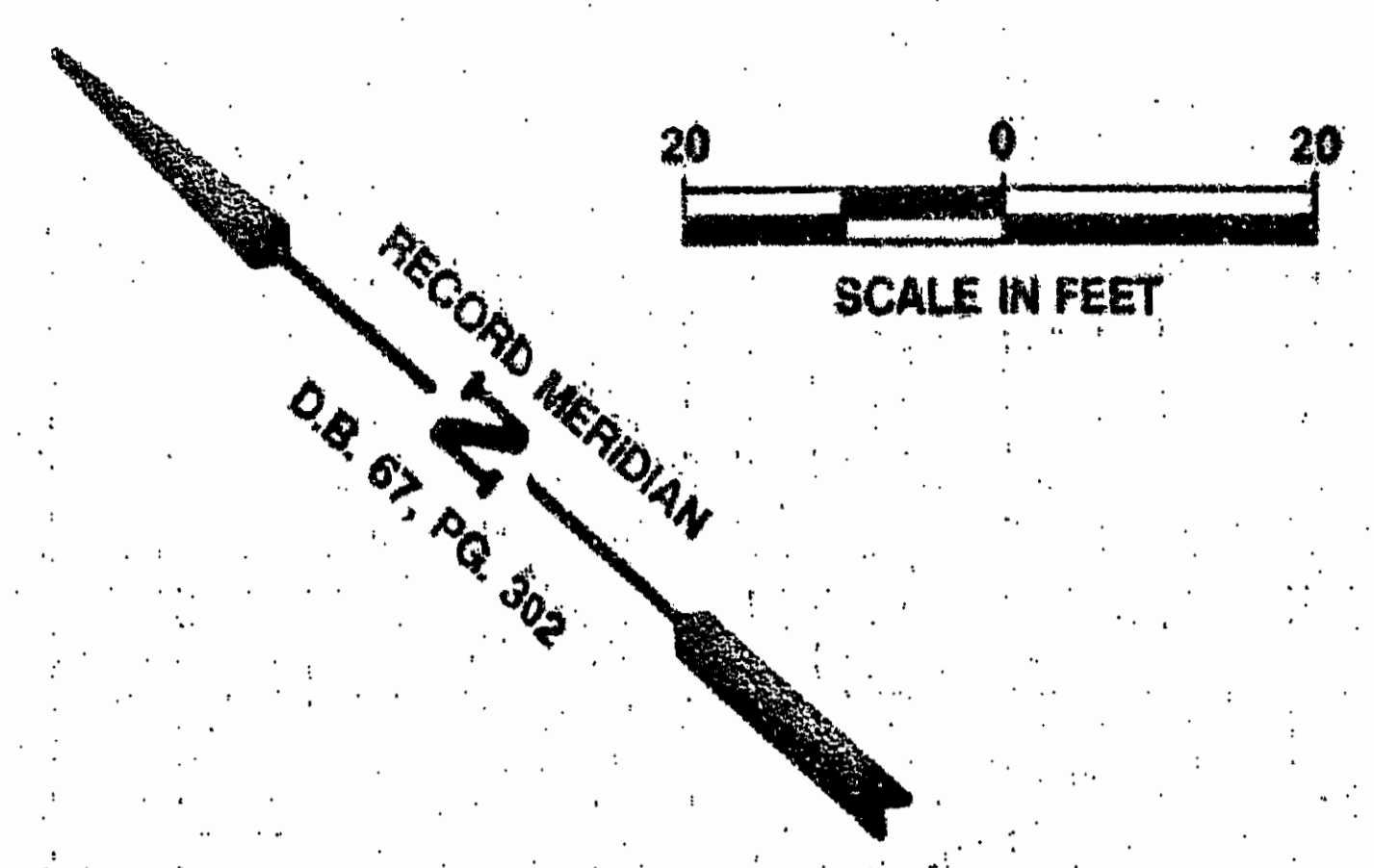
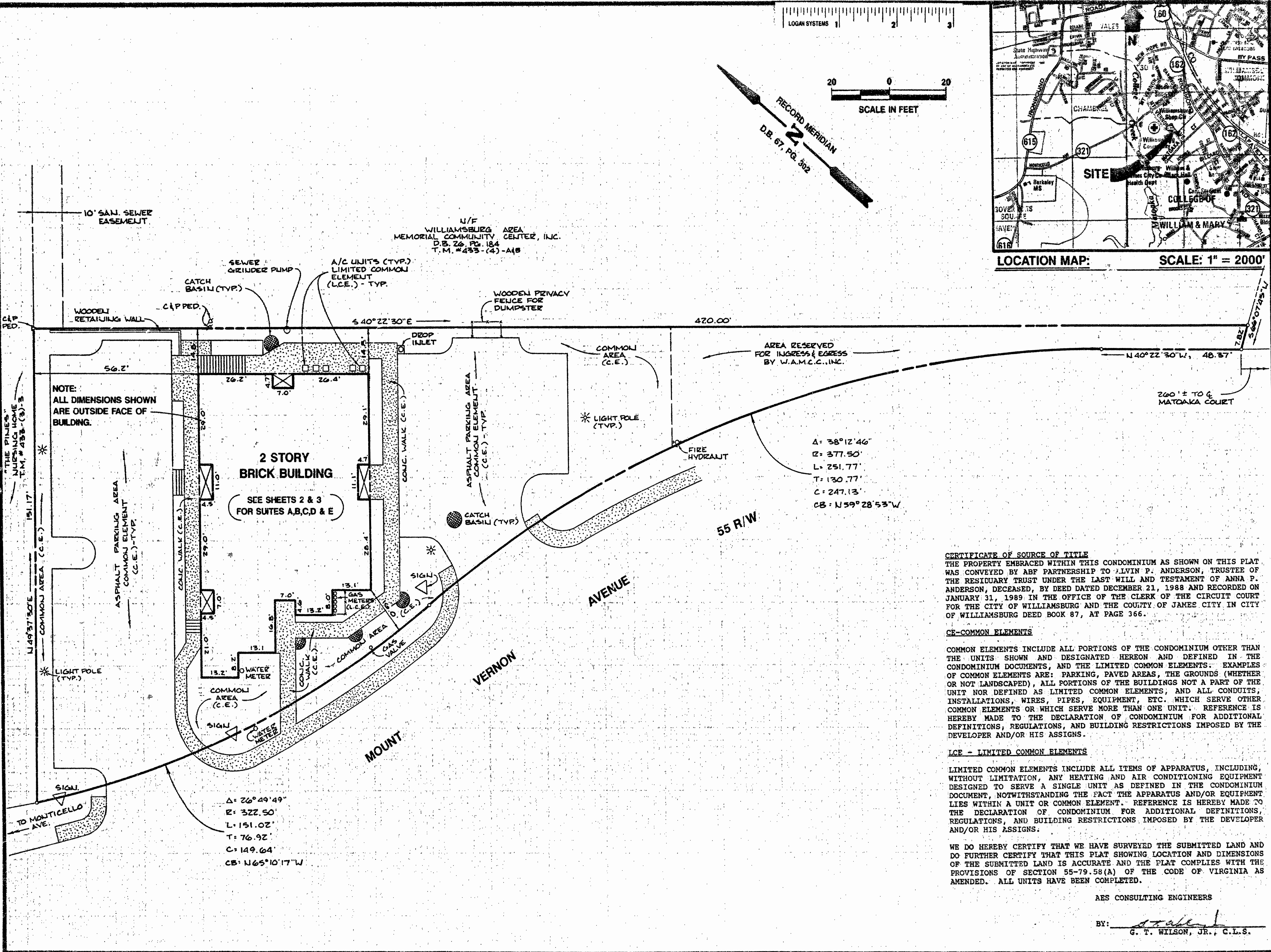


LOGAN SYSTEMS 1 2 3



LOCATION MAP: SCALE: 1" = 2000'



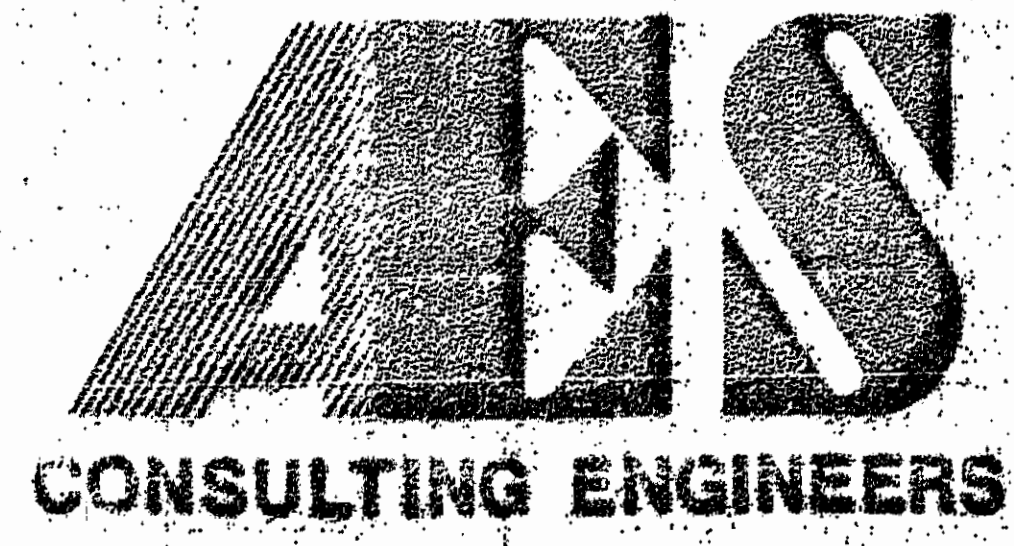
CERTIFICATE OF SOURCE OF TITLE
 THE PROPERTY EMBRACED WITHIN THIS CONDOMINIUM AS SHOWN ON THIS PLAT WAS CONVEYED BY ABF PARTNERSHIP TO ALVIN P. ANDERSON, TRUSTEE OF THE RESIDUARY TRUST UNDER THE LAST WILL AND TESTAMENT OF ANNA P. ANDERSON, DECEASED, BY DEED DATED DECEMBER 21, 1988 AND RECORDED ON JANUARY 31, 1989 IN THE OFFICE OF THE CLERK OF THE CIRCUIT COURT FOR THE CITY OF WILLIAMSBURG AND THE COUNTY OF JAMES CITY IN CITY OF WILLIAMSBURG DEED BOOK 87, AT PAGE 366.

CE-COMMON ELEMENTS
 COMMON ELEMENTS INCLUDE ALL PORTIONS OF THE CONDOMINIUM OTHER THAN THE UNITS SHOWN AND DESIGNATED HEREON AND DEFINED IN THE CONDOMINIUM DOCUMENTS, AND THE LIMITED COMMON ELEMENTS. EXAMPLES OF COMMON ELEMENTS ARE: PARKING, PAVED AREAS, THE GROUNDS (WHETHER OR NOT LANDSCAPED), ALL PORTIONS OF THE BUILDINGS NOT A PART OF THE UNIT NOR DEFINED AS LIMITED COMMON ELEMENTS, AND ALL CONDUITS, INSTALLATIONS, WIRES, PIPES, EQUIPMENT, ETC. WHICH SERVE OTHER COMMON ELEMENTS OR WHICH SERVE MORE THAN ONE UNIT. REFERENCE IS HEREBY MADE TO THE DECLARATION OF CONDOMINIUM FOR ADDITIONAL DEFINITIONS, REGULATIONS, AND BUILDING RESTRICTIONS IMPOSED BY THE DEVELOPER AND/OR HIS ASSIGNS.

LCE - LIMITED COMMON ELEMENTS
 LIMITED COMMON ELEMENTS INCLUDE ALL ITEMS OF APPARATUS, INCLUDING, WITHOUT LIMITATION, ANY HEATING AND AIR CONDITIONING EQUIPMENT DESIGNED TO SERVE A SINGLE UNIT AS DEFINED IN THE CONDOMINIUM DOCUMENT, NOTWITHSTANDING THE FACT THE APPARATUS AND/OR EQUIPMENT LIES WITHIN A UNIT OR COMMON ELEMENT. REFERENCE IS HEREBY MADE TO THE DECLARATION OF CONDOMINIUM FOR ADDITIONAL DEFINITIONS, REGULATIONS, AND BUILDING RESTRICTIONS IMPOSED BY THE DEVELOPER AND/OR HIS ASSIGNS.

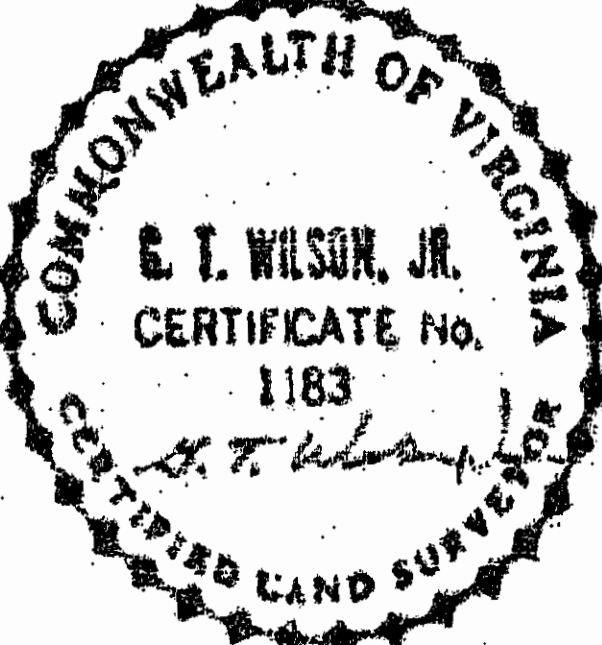
WE DO HEREBY CERTIFY THAT WE HAVE SURVEYED THE SUBMITTED LAND AND DO FURTHER CERTIFY THAT THIS PLAT SHOWING LOCATION AND DIMENSIONS OF THE SUBMITTED LAND IS ACCURATE AND THE PLAT COMPLIES WITH THE PROVISIONS OF SECTION 55-79.58(A) OF THE CODE OF VIRGINIA AS AMENDED. ALL UNITS HAVE BEEN COMPLETED.

RES CONSULTING ENGINEERS
 BY: *G. T. Wilson, Jr.*
 G. T. WILSON, JR., C.L.S.



5248 Olde Towne Road, Suite 1
 Williamsburg, Virginia 23188
 (804) 253-0040
 Fax (804) 220-8994

EXHIBIT B
**THE MEDICAL ARTS CENTRE
 CONDOMINIUMS**
 OWNER/DEVELOPER: ALVIN ANDERSON, TRUSTEE
 CITY OF WILLIAMSBURG VIRGINIA



No.	DATE	REVISION / COMMENT / NOTE	BY

Designed	Drawn
Scale	Date
1" = 20'	6/21/01
Project No.	7059
Drawing No.	1 of 3