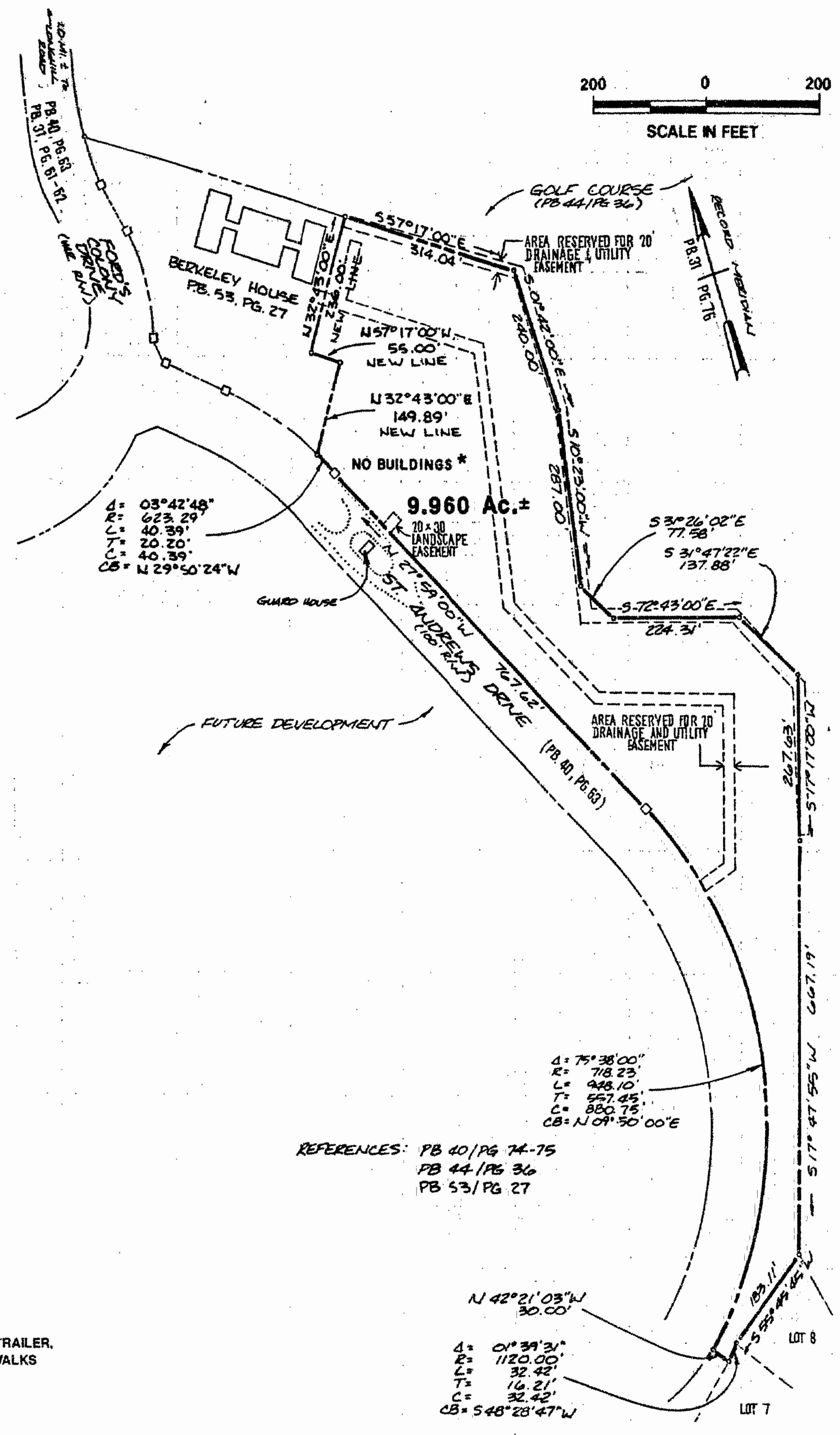
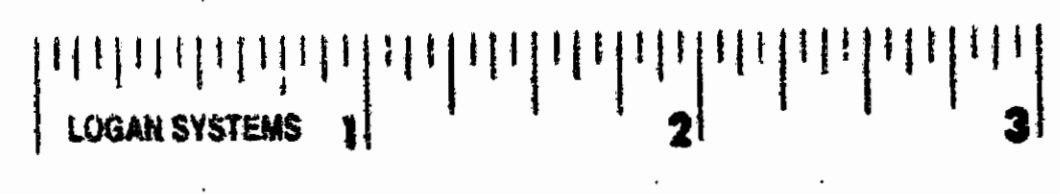


NOTE: LINE 'A' TO 'B' IS BASED ON A PLAT BY L.V. WOODSON & ASSOCIATES, INC. DATED MAY 5, 1988 AND ENTITLED SURVEY OF ESCHEAT SALE TO KENNETH I. HEATH, PB. 42/78 AND DB. 304/590

REFERENCES: DB. 365/98 ; PB. 46/64
DB. 270/317 ; PB. 42/78

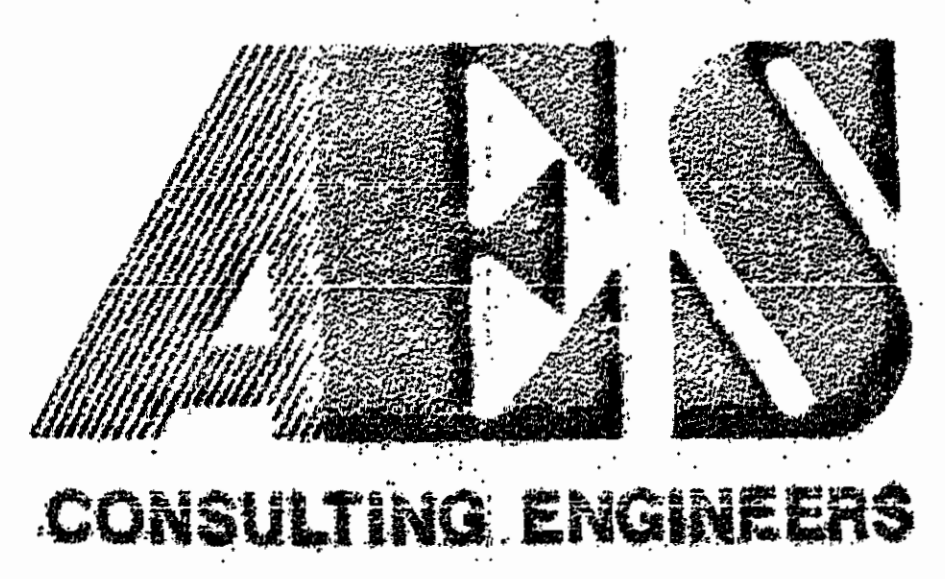
PERIMETER SURVEY OF FORD'S COLONY @ WILLIAMSBURG SECTION XVIII (A-18)



REFERENCES: PB. 40/Pg. 74-75
PB. 44/Pg. 36
PB. 53/Pg. 27

* TEMPORARY OFFICE TRAILER, CURB AND GUTTER, WALKS ON SITE.

PERIMETER SURVEY OF AREA KNOWN AS "ADDITIONAL LANDS OF THE MANOR HOUSES AT FORD'S COLONY - A CONDOMINIUM"



5248 Olde Towne Road, Suite 1
Williamsburg, Virginia 23188
(804) 253-0040
Fax (804) 220-8994

PLAT SHOWING
PERIMETER SURVEYS OF SECTION XVIII (A-18)
AND "ADDITIONAL LANDS"
FORD'S COLONY
@ WILLIAMSBURG

POWhatan DISTRICT JAMES CITY COUNTY VIRGINIA



No.	DATE	REVISION / COMMENT / NOTE	BY

Designed AES	Drawn AES
Scale NOTED	Date APR., 1991
Project No. 5652	
Drawing No. 7 OF 7	