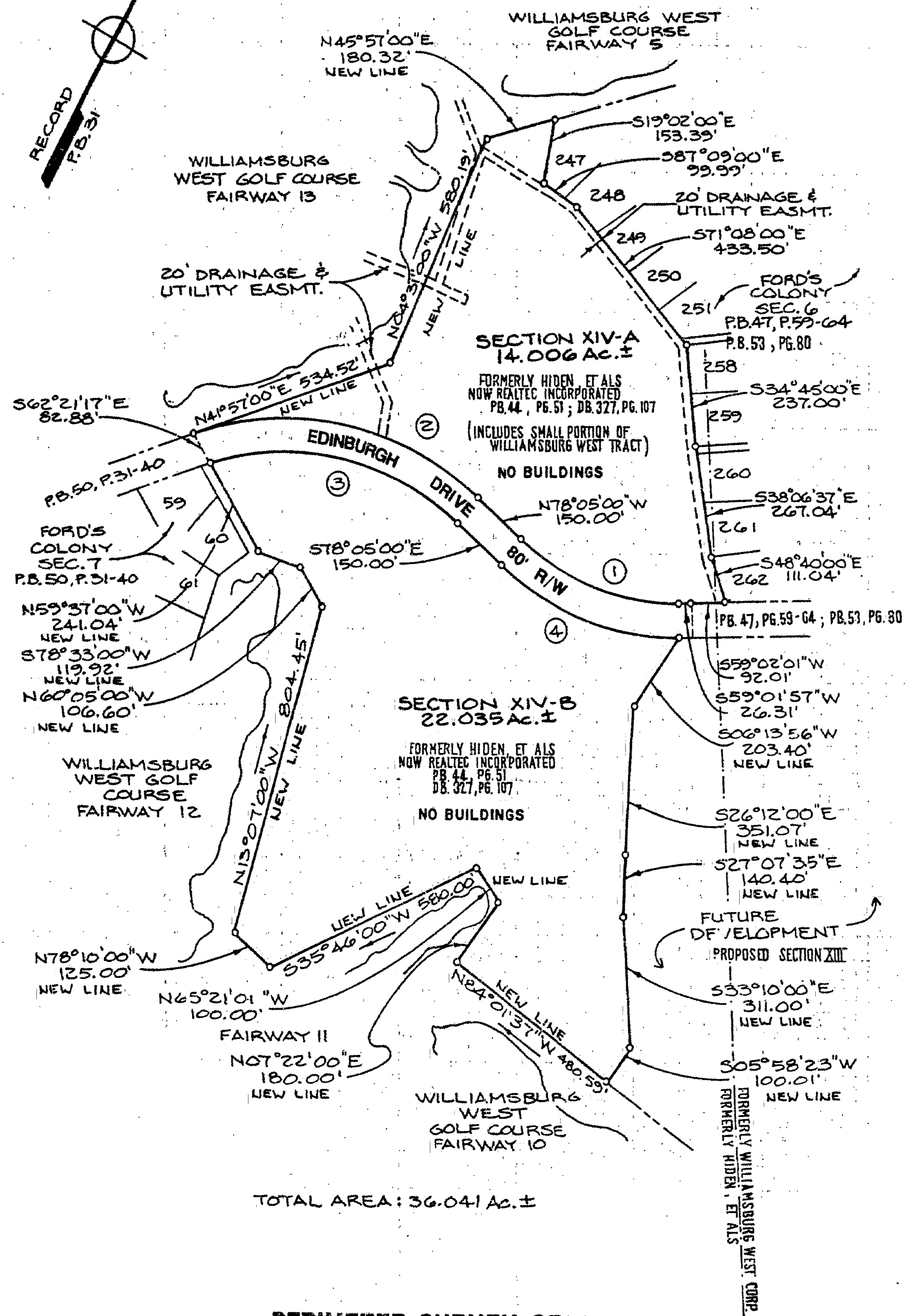
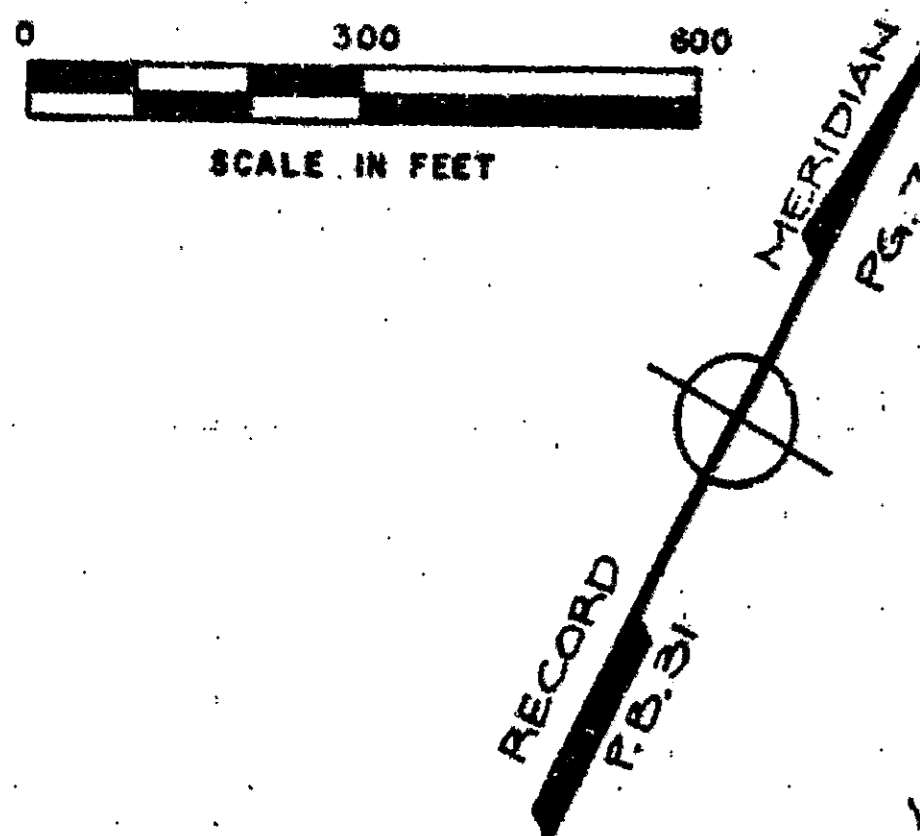


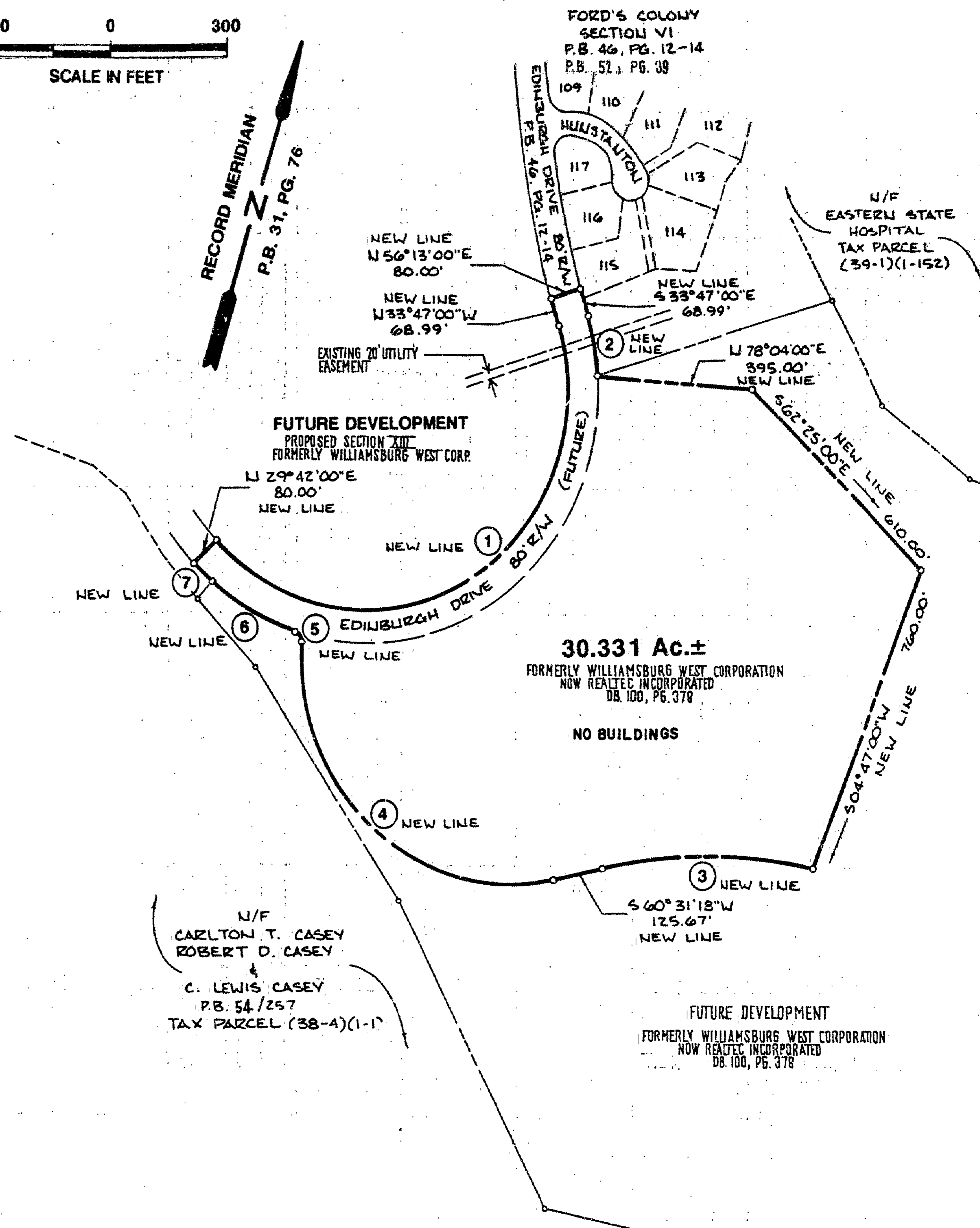
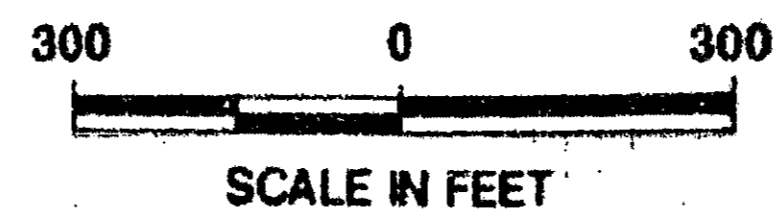
CURVE DATA

NO.	Δ	RADIUS	LENGTH	TAN	CHORD	C. BEARING
1	42°52'59"	592.06'	443.13'	232.52'	432.86'	S80°28'31"W
2	59°58'00"	746.66'	781.47'	430.79'	746.28'	S71°56'00"W
3	58°12'23"	666.66'	677.25'	371.11'	648.50'	N72°48'49"E
4	42°52'59"	672.06'	503.01'	263.94'	491.35'	N80°28'31"E



PERIMETER SURVEY OF FORD'S COLONY @ WILLIAMSBURG SECTIONS XIV-A (A-14a) & XIV-B (A-14b)

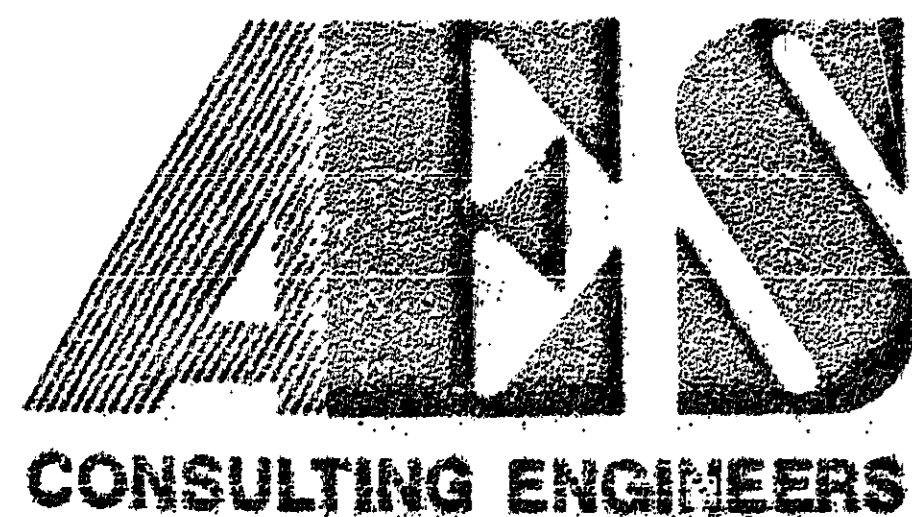
TOTAL AREA: 36.041 Ac.±



PERIMETER SURVEY OF FORD'S COLONY @ WILLIAMSBURG SECTION XVI (A-16)

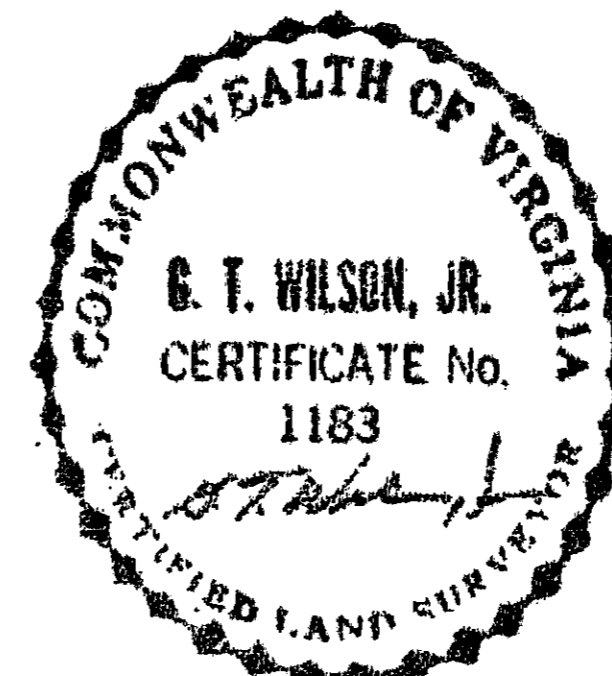
CURVE TABLE

NO.	DELTA	RADIUS	LENGTH	TANGENT	CHORD	CHORD BEARING
1	155°28'57"	523.69'	1402.85'	2222.53'	1019.46'	N42°57'31"E
2	1°32'15"	603.69'	142.65'	71.66'	142.32'	S27°00'47"W
3	24°45'54"	1258.29'	543.87'	275.25'	439.65'	S72°54'15"W
4	106°39'37"	534.28'	994.60'	717.58'	857.08'	N66°08'53"W
5	76°52'55"	25.00'	33.55'	19.84'	31.09'	N51°51'32"W
6	23°12'32"	603.69'	244.54'	123.97'	242.87'	N78°05'44"W
7	6°11'27"	603.69'	65.23'	32.65'	65.20'	N63°23'44"W



5248 Olde Towne Road, Suite 1
Williamsburg, Virginia 23188
(804) 253-0040
Fax (804) 220-8994

PLAT SHOWING
PERIMETER SURVEYS OF SECTIONS XIV-A (A-14a)
SECTION XIV-B (A-14b) & SECTION XVI (A-16)
FORD'S COLONY @ WILLIAMSBURG
BERKELEY DISTRICT JAMES CITY COUNTY VIRGINIA



NO.	DATE	REVISION / COMMENT / NOTE	BY

Designed AES	Drawn AES
Scale NOTED	Date APR, 1991
Project No. 5652	
Drawing No. 6 OF 7	