

FORD'S COLONY RECORD MERIDIAN
P.B. 31, PG. 71

ACCESS EASEMENT
AS RECORDED AT
P.B. 52, PG. 53-54

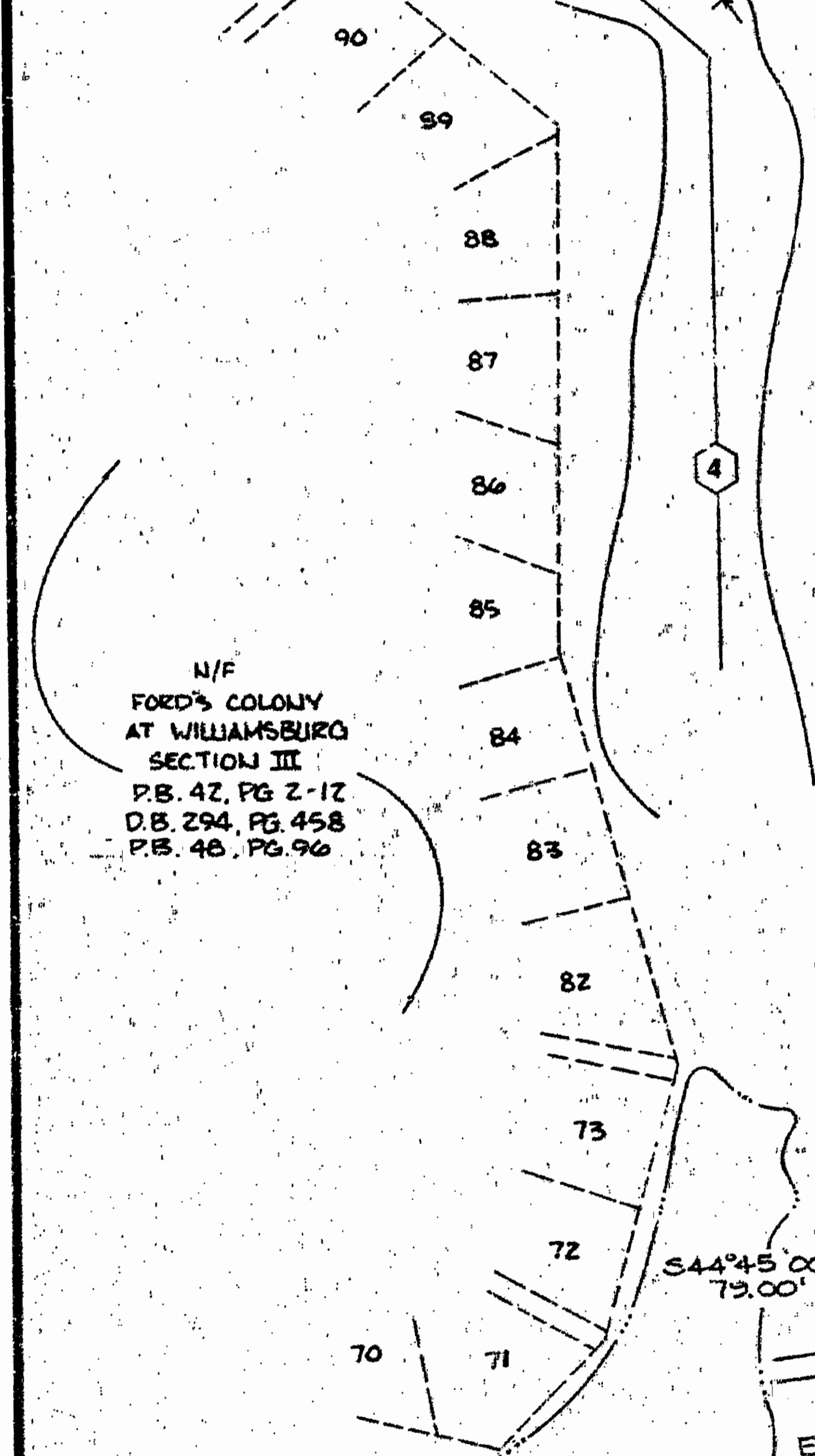
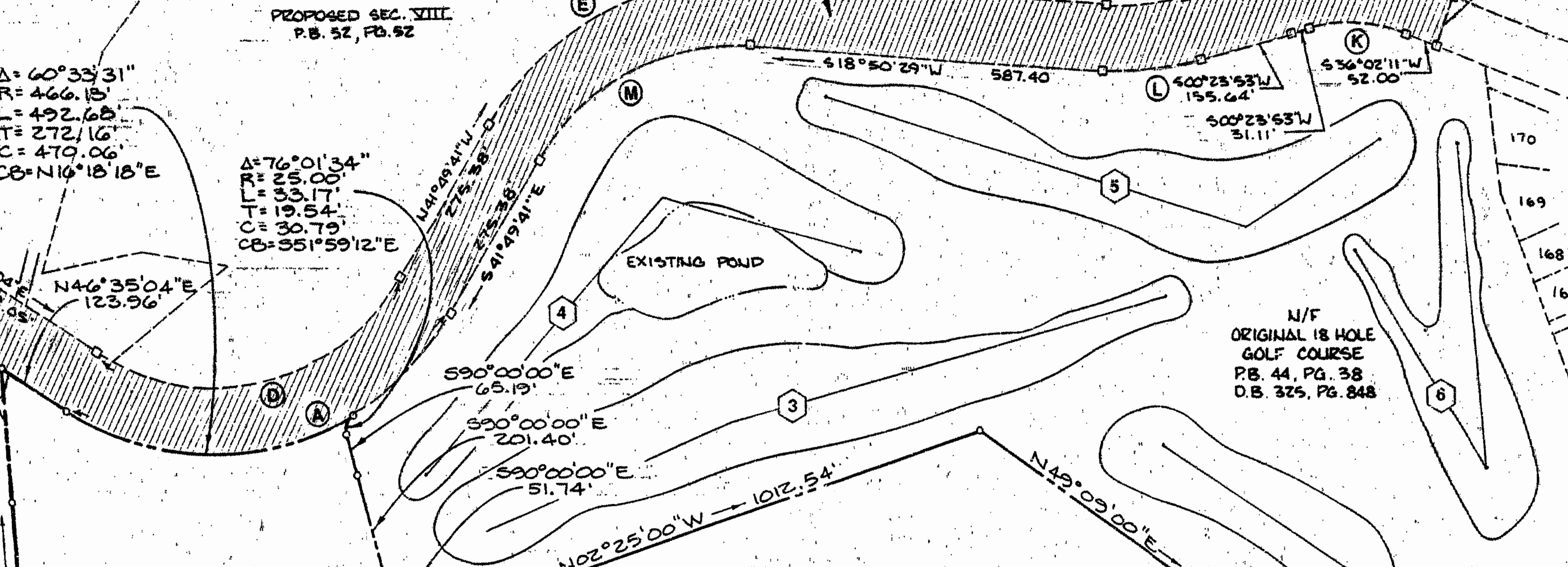
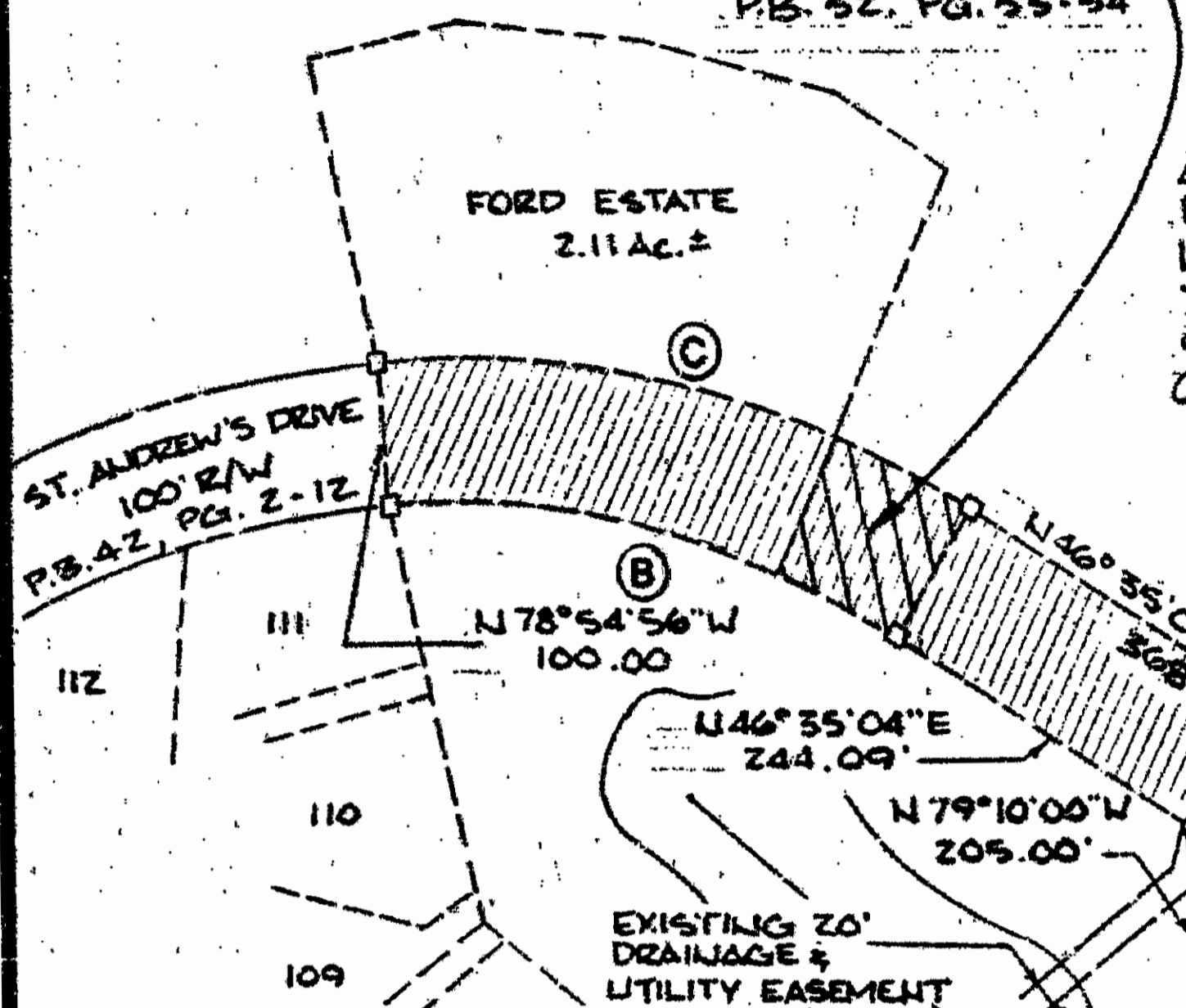
N/F
ADDITIONAL 18 HOLE GOLF COURSE
(ALSO KNOWN AS
CHAMPIONSHIP 18 HOLE GOLF COURSE)
P.B. 52, PG. 53-54

100' WIDE INGRESS, EGRESS DRAINAGE AND
UTILITY EASEMENT. AREA OF EASEMENT
WILL BE RECORDED AS ST. ANDREWS DRIVE
UPON DEVELOPMENT OF ADJACENT PROPOSED
SECTION VIII OR SECTION XVII.
AREA OF EASEMENT = 7.64 Ac.±

PROPOSED SEC. VIII
P.B. 52, PG. 52

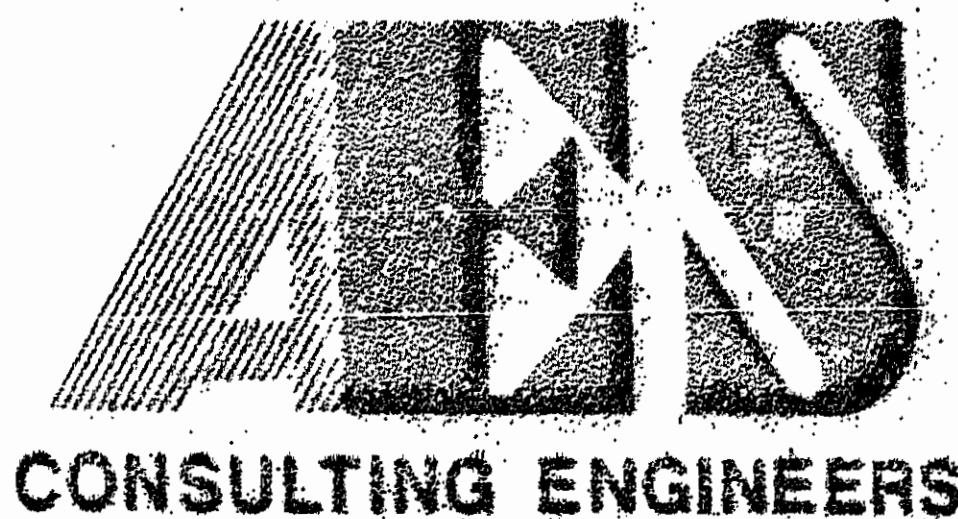
PROPOSED SEC. VIII
P.B. 52, PG. 52

FORD'S COLONY
@ WILLIAMSBURG
GOLF MAINTENANCE
CENTER
P.B. 52, PG. 77



EASEMENT CURVE TABLE

NO.	DELTA	RADIUS	LENGTH	TANGENT	CHORD	CHORD BEARING
A	88°24'40"	466.13'	719.28'	453.39'	650.01'	S02°22'42"W
B	35°30'00"	621.66'	385.18'	199.00'	379.04'	S28°50'04"W
C	35°30'00"	721.66'	447.13'	231.02'	440.02'	N28°50'04"E
D	88°24'45"	366.13'	564.97'	356.12'	510.56'	N02°22'41"E
E	60°40'10"	488.13'	515.88'	285.64'	493.06'	N11°29'36"W
F	18°26'36"	411.95'	132.61'	66.88'	132.04'	N09°37'11"E
G	66°45'29"	25.00'	29.13'	16.47'	27.51'	N32°58'53"W
H	4°51'45"	450.00'	38.19'	19.11'	38.18'	S61°13'23"W
I	94°40'14"	25.00'	41.31'	27.13'	36.77'	N69°00'41"E
J	14°21'43"	800.00'	200.52'	100.79'	200.00'	N28°51'20"E
K	35°38'19"	264.38'	164.45'	84.98'	161.81'	S18°13'02"W
L	18°26'36"	511.95'	164.80'	83.12'	164.09'	S09°37'11"W
M	60°40'10"	388.13'	410.99'	227.12'	392.05'	S11°29'36"E



5248 Olde Towne Road, Suite 1
Williamsburg, Virginia 23188
(804) 253-0040
Fax (804) 220-8994

**PERIMETER SURVEY OF
FORD'S COLONY
@ WILLIAMSBURG
SECTION XVII (A-17)**

OWNER: REALTEC INCORPORATED
JAMES CITY COUNTY VIRGINIA



NO.	DATE	REVISION / COMMENT / NOTE	BY

Designed by AES
Drawn by CMA
Scale 1" = 200'
Date APR., 1991
Project No. 5652
Drawing No. 4 OF 7