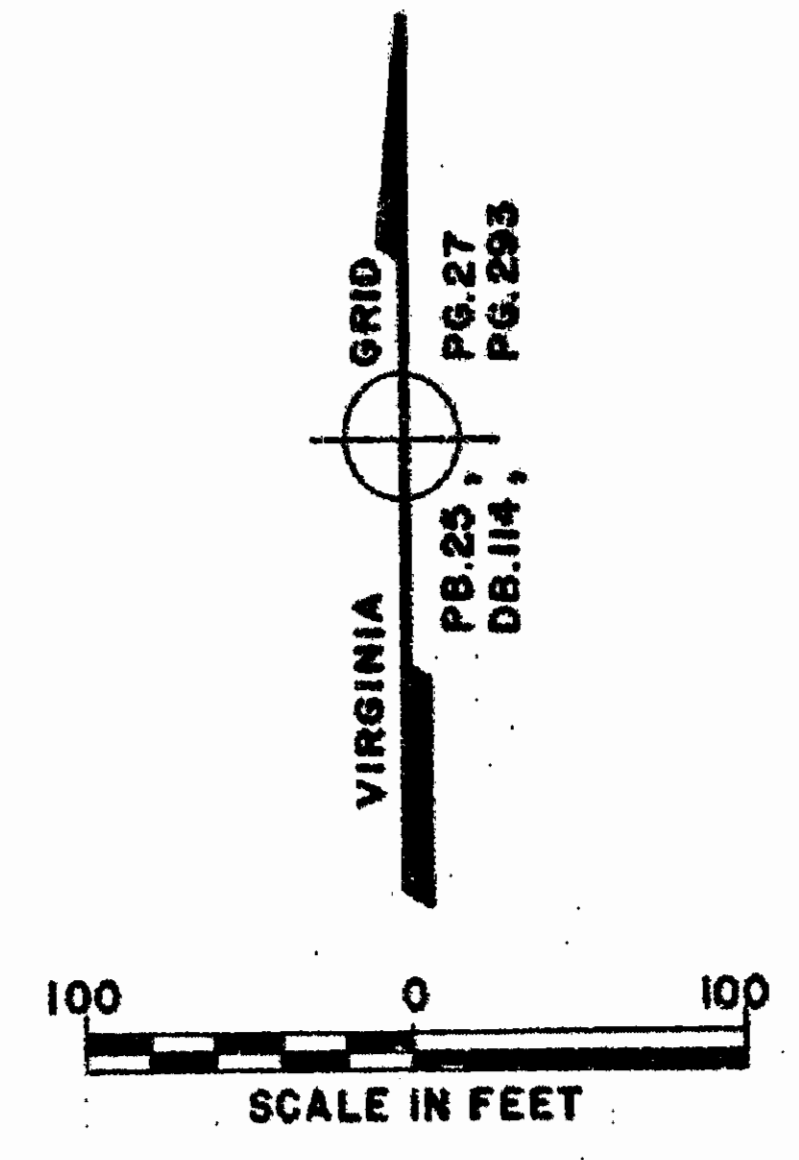


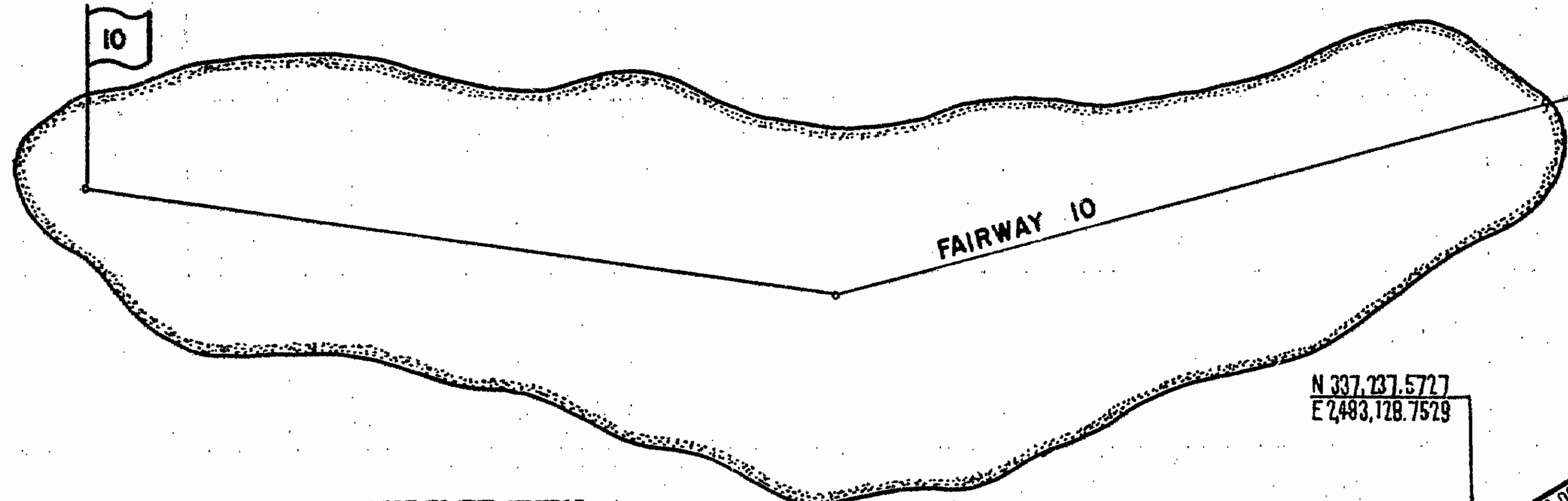
GOVERNOR'S LAND AT TWO RIVERS

LOT CURVE TABLE

LOT NO.	BEING	RADIUS	LENGTH	TANGENT	CHORD	CHORD BEARING
1	13°47'08"	225.00'	54.14'	27.20'	54.00'	S27°20'34"W
2	27°25'48"	225.00'	107.72'	54.91'	106.69'	S47°57'01"W
3	17°22'05"	225.00'	68.20'	34.37'	67.94'	S70°20'58"W
4	01°22'31"	375.00'	9.00'	4.50'	9.00'	S78°20'44"W
5	15°30'15"	375.00'	101.47'	51.05'	101.17'	S69°54'21"W
6	12°51'14"	375.00'	84.13'	42.24'	83.95'	S55°43'37"W
42	22°58'47"	325.00'	130.35'	66.06'	129.48'	N65°11'46"E
43	10°56'50"	325.00'	62.10'	31.14'	62.00'	N82°09'35"E
44	04°43'45"	275.00'	22.70'	11.36'	22.69'	N85°16'07"E
45A	23°02'34"	275.00'	110.60'	56.06'	109.85'	N71°22'58"E
45B	94°42'19"	25.00'	41.32'	27.14'	36.78'	S72°47'09"E
46	12°13'50"	300.00'	64.04'	32.14'	63.92'	S31°32'55"E
47	12°13'50"	250.00'	53.37'	26.78'	53.26'	S31°32'55"E
51	12°13'50"	300.00'	64.04'	32.14'	63.92'	N31°32'55"W
52	12°13'50"	250.00'	53.37'	26.78'	53.26'	N31°32'55"W
54A	65°27'28"	25.00'	28.56'	27.03'	27.03'	N07°17'44"E
54B	16°10'07"	275.00'	77.60'	39.06'	77.35'	N31°56'25"E
55	21°19'21"	275.00'	102.34'	51.77'	101.75'	N13°11'41"E
57	17°55'00"	225.00'	70.36'	35.47'	70.07'	N11°29'30"E



N/F GOVERNOR'S LAND ASSOCIATES



NOTE: REFERENCE IS HEREBY EXPRESSLY MADE TO THE GENERAL NOTES, AS THEY APPEAR ON SHEET #1 OF THIS PLAT, AND THE DECLARATION OF PROTECTIVE COVENANTS FOR THE GOVERNOR'S LAND AT TWO RIVERS FOR ADDITIONAL INFORMATION, RULES AND REGULATIONS REGARDING THIS SUBDIVISION.

MATCH SHEET # 9

NOTE REGARDING BUILDING SETBACKS UNLESS OTHERWISE NOTED, BUILDING SETBACKS FOR THE LOTS SHOWN ARE AS FOLLOWS:
 FRONT: 40'
 SIDE: 10'
 REAR: 40'

RIGHTS-OF-WAY CURVE TABLE

NO.	BEING	RADIUS	LENGTH	TANGENT	CHORD	CHORD BEARING
14	11°18'40"	1886.43'	372.41'	186.81'	371.80'	S84°53'52"W
15	83°04'12"	25.00'	36.25'	22.15'	33.15'	S37°42'27"W
16	24°16'39"	427.87'	181.30'	92.03'	179.95'	S08°18'40"W
17	37°29'28"	275.00'	179.94'	93.33'	176.75'	S21°16'44"W
18	27°46'19"	275.00'	133.30'	67.98'	131.99'	S73°44'51"W
19	38°20'00"	325.00'	217.44'	112.97'	213.41'	S68°28'00"W
27	112°52'00"	300.00'	590.97'	452.11'	499.95'	N74°01'00"E
28	29°44'00"	375.00'	194.60'	99.55'	192.43'	N64°10'00"E
29	58°35'00"	225.00'	230.06'	126.22'	220.17'	N49°44'30"E
30	21°50'42"	377.87'	144.07'	72.92'	143.20'	N09°31'39"E
31	102°29'06"	25.00'	44.72'	31.14'	38.99'	N52°38'15"W
32	00°22'17"	1886.43'	11.68'	5.84'	11.68'	S75°56'33"W
33	14°47'18"	1966.43'	507.55'	255.19'	506.14'	N83°09'33"E

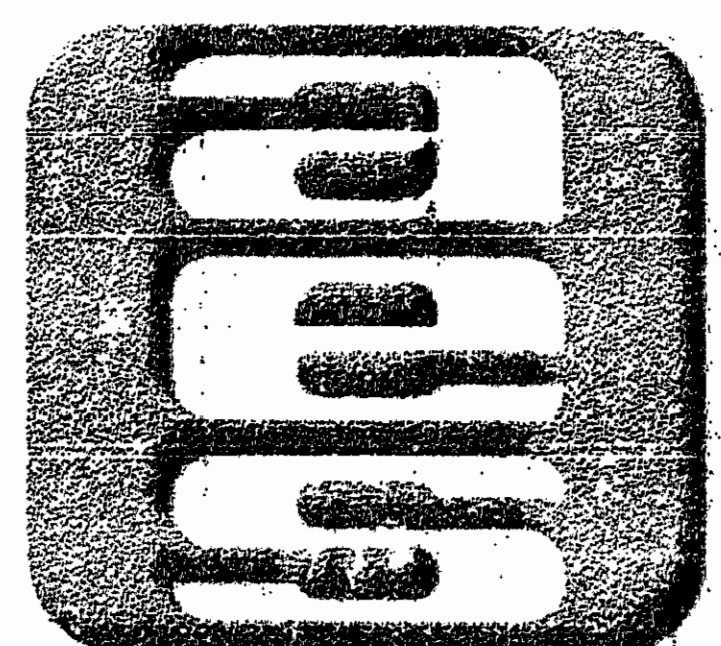
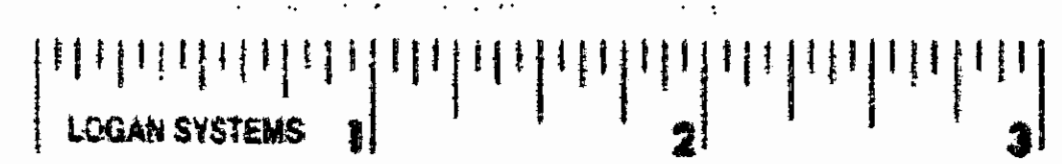
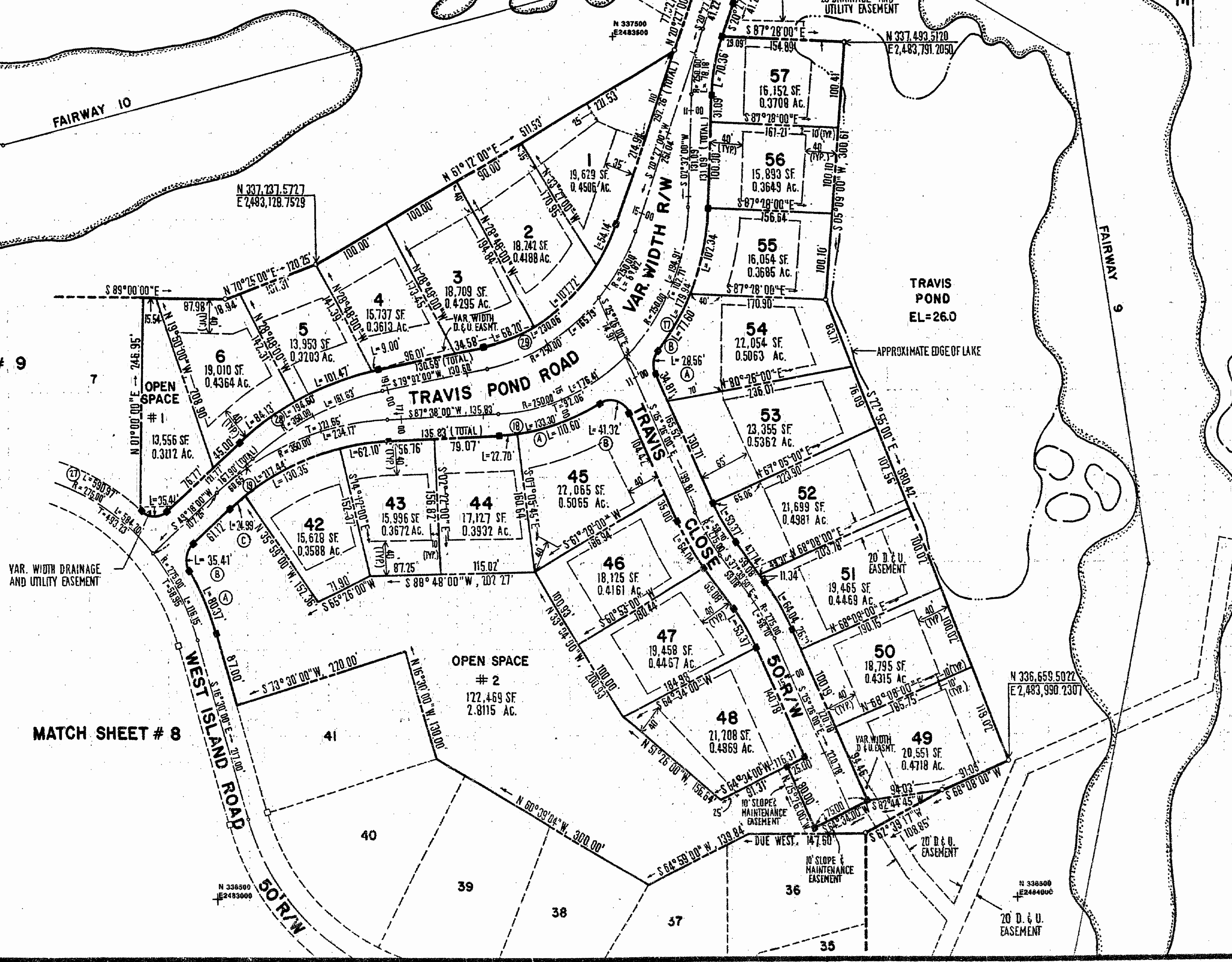
OPEN SPACE CURVE TABLE

NO.	BEING	RADIUS	LENGTH	TANGENT	CHORD	CHORD BEARING
1	81°09'00"	25.00'	35.41'	21.41'	32.52'	S89°52'30"W
2A	15°21'00"	300.00'	80.37'	40.43'	80.13'	N24°10'30"W
2B	81°09'00"	25.00'	35.41'	21.41'	32.52'	N08°43'30"E
2C	04°24'23"	325.00'	24.99'	12.50'	24.99'	N51°30'11"E

MATCH SHEET # 8

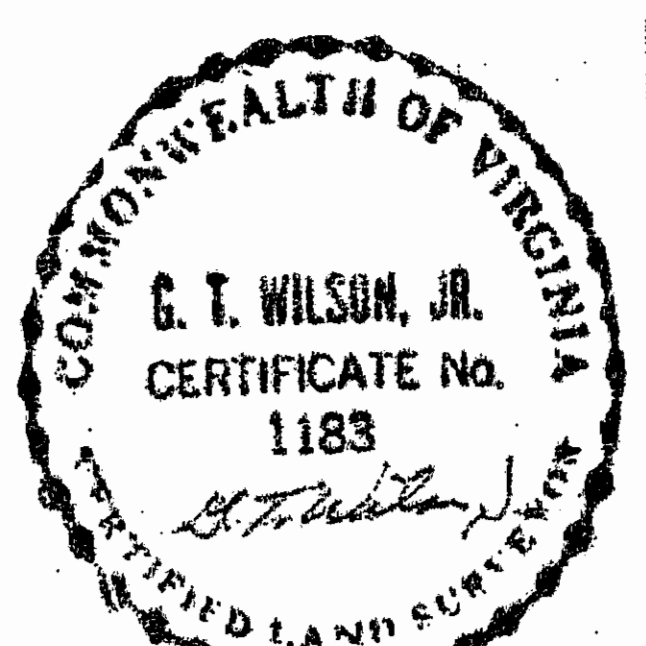
VAR. WIDTH DRAINAGE AND UTILITY EASEMENT

OPEN SPACE # 2
122,469 SF
2.8115 AC.



AES, a professional corporation
 5248 Olde Towne Road, Suite 1
 Williamsburg, Virginia 23185
 (804) 253-0040
 Engineering, Planning, Surveying

PLAT OF SUBDIVISION
 TRAVIS POND
 THE GOVERNOR'S LAND
At Two Rivers
 POWHATAN DISTRICT JAMES CITY COUNTY VIRGINIA



NO.	DATE	REVISION / COMMENT / NOTE	BY

Designed AES	Drawn BB
Scale 1"= 100'	Date JAN. 1991
Project No. 7173	
Drawing No. 7 of 9	