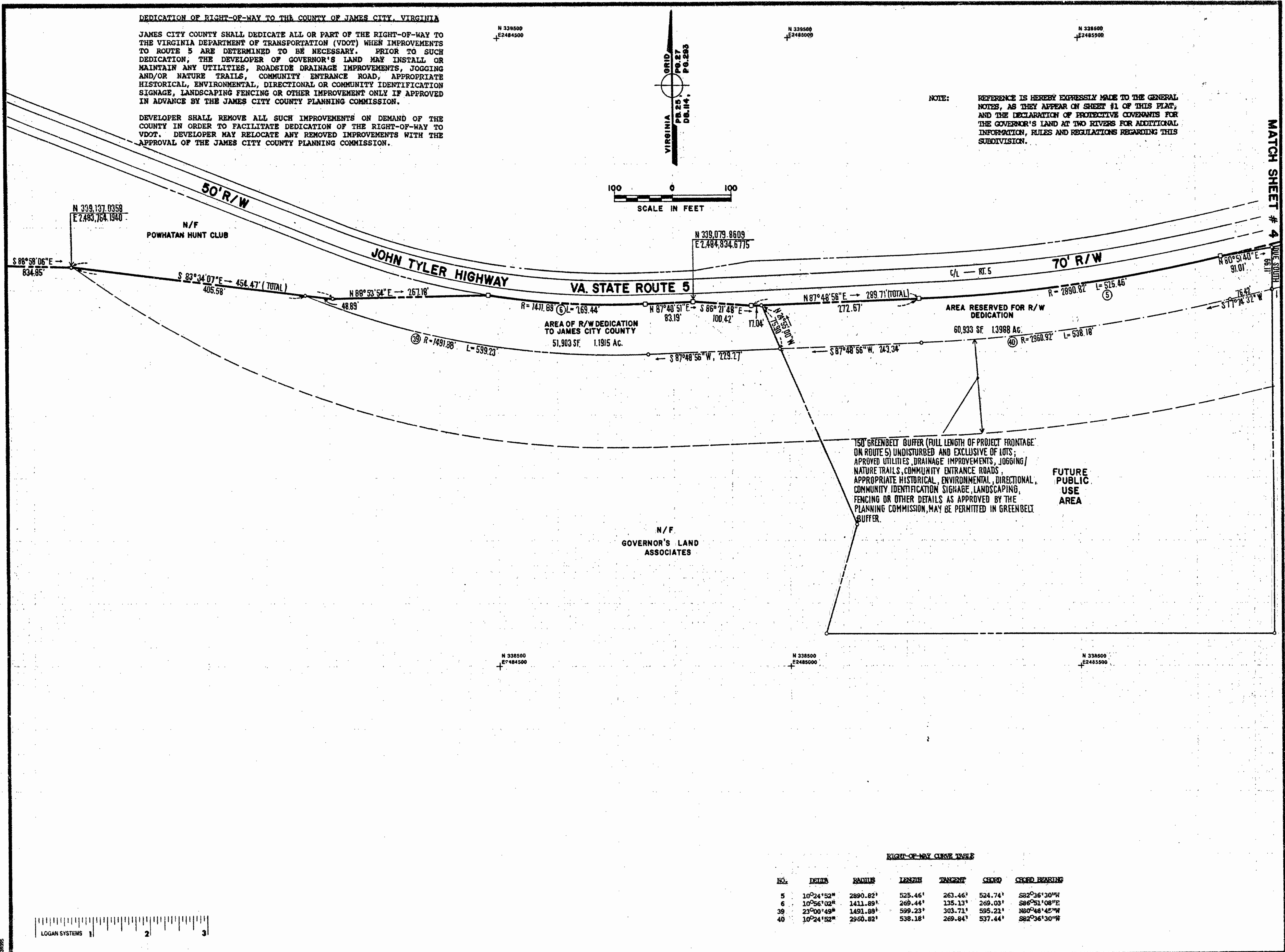


DEDICATION OF RIGHT-OF-WAY TO THE COUNTY OF JAMES CITY, VIRGINIA

JAMES CITY COUNTY SHALL DEDICATE ALL OR PART OF THE RIGHT-OF-WAY TO THE VIRGINIA DEPARTMENT OF TRANSPORTATION (VDOT) WHEN IMPROVEMENTS TO ROUTE 5 ARE DETERMINED TO BE NECESSARY. PRIOR TO SUCH DEDICATION, THE DEVELOPER OF GOVERNOR'S LAND MAY INSTALL OR MAINTAIN ANY UTILITIES, ROADSIDE DRAINAGE IMPROVEMENTS, JOGGING AND/OR NATURE TRAILS, COMMUNITY ENTRANCE ROAD, APPROPRIATE HISTORICAL, ENVIRONMENTAL, DIRECTIONAL OR COMMUNITY IDENTIFICATION SIGNAGE, LANDSCAPING FENCING OR OTHER IMPROVEMENT ONLY IF APPROVED IN ADVANCE BY THE JAMES CITY COUNTY PLANNING COMMISSION.

DEVELOPER SHALL REMOVE ALL SUCH IMPROVEMENTS ON DEMAND OF THE COUNTY IN ORDER TO FACILITATE DEDICATION OF THE RIGHT-OF-WAY TO VDOT. DEVELOPER MAY RELOCATE ANY REMOVED IMPROVEMENTS WITH THE APPROVAL OF THE JAMES CITY COUNTY PLANNING COMMISSION.

NOTE: REFERENCE IS HEREBY EXPRESSLY MADE TO THE GENERAL NOTES, AS THEY APPEAR ON SHEET #1 OF THIS PLAT, AND THE DECLARATION OF PROTECTIVE COVENANTS FOR THE GOVERNOR'S LAND AT TWO RIVERS FOR ADDITIONAL INFORMATION, RULES AND REGULATIONS REGARDING THIS SUBDIVISION.



150' GREENBELT BUFFER (FULL LENGTH OF PROJECT FRONTAGE ON ROUTE 5) UNDISTURBED AND EXCLUSIVE OF LOTS; APPROVED UTILITIES, DRAINAGE IMPROVEMENTS, JOGGING/NATURE TRAILS, COMMUNITY ENTRANCE ROADS, APPROPRIATE HISTORICAL, ENVIRONMENTAL, DIRECTIONAL, COMMUNITY IDENTIFICATION SIGNAGE, LANDSCAPING, FENCING OR OTHER DETAILS AS APPROVED BY THE PLANNING COMMISSION, MAY BE PERMITTED IN GREENBELT BUFFER.

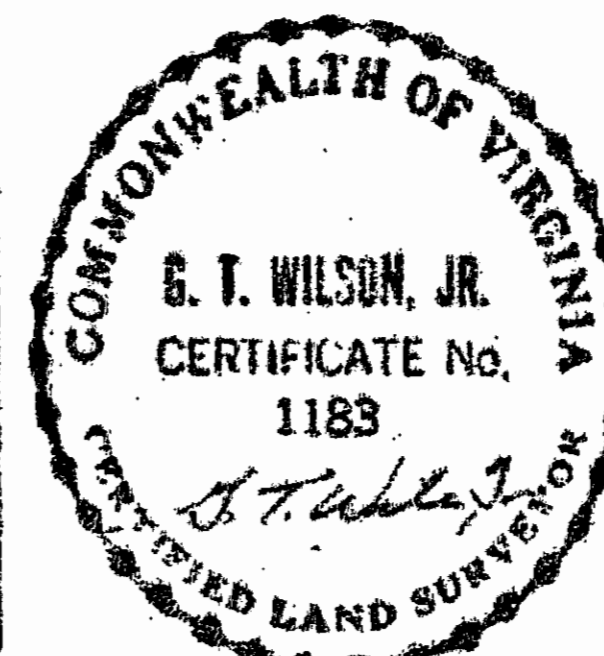
FUTURE PUBLIC USE AREA

RIGHT-OF-WAY CURVE TABLE

NO.	DELTA	RADIUS	LENGTH	TANGENT	CHORD	CHORD BEARING
5	10°24'52"	2890.82'	525.46'	263.46'	524.74'	S82°36'30"W
6	10°56'02"	1411.89'	269.44'	135.13'	269.03'	S86°51'08"E
39	23°00'49"	1491.89'	599.23'	303.71'	595.21'	N60°48'45"W
40	10°24'52"	2960.82'	538.18'	269.84'	537.44'	S82°36'30"W

AES, a professional corporation
 5248 Olde Towne Road, Suite 1
 Williamsburg, Virginia 23185
 (804) 253-0040
 Engineering, Planning, Surveying

PLAT OF
 FUTURE RIGHT-OF-WAY WIDENING,
 150' GREENBELT BUFFER AND PUBLIC USE AREA
 THE
GOVERNOR'S LAND
At Two Rivers
 POWHATAN DISTRICT JAMES CITY COUNTY VIRGINIA



No.	DATE	REVISION / COMMENT / NOTE	BY

Designed AES	Drawn BB
Scale 1" = 100'	Date JAN 1991
Project No. 7173	
Drawing No. 5 of 9	