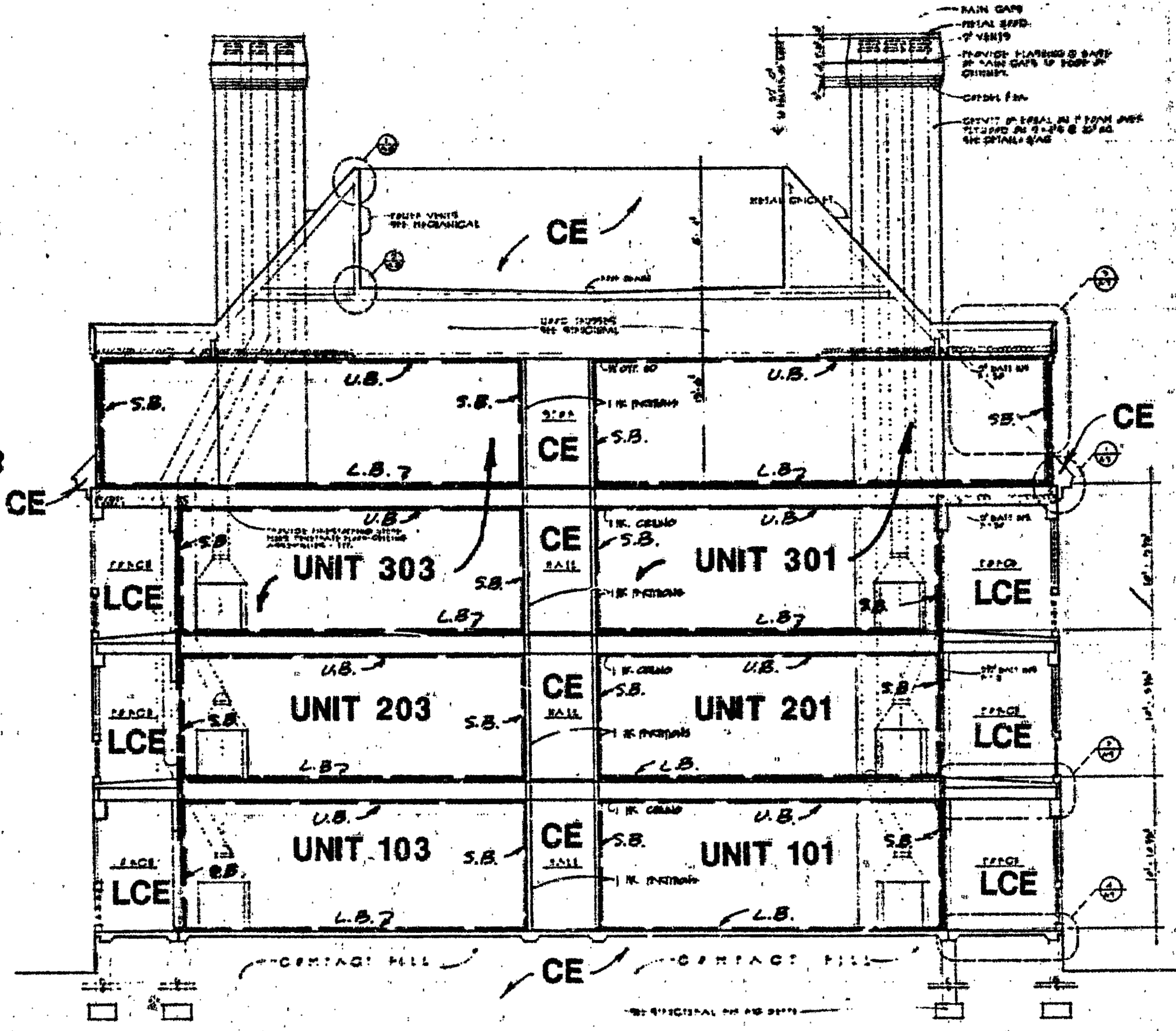
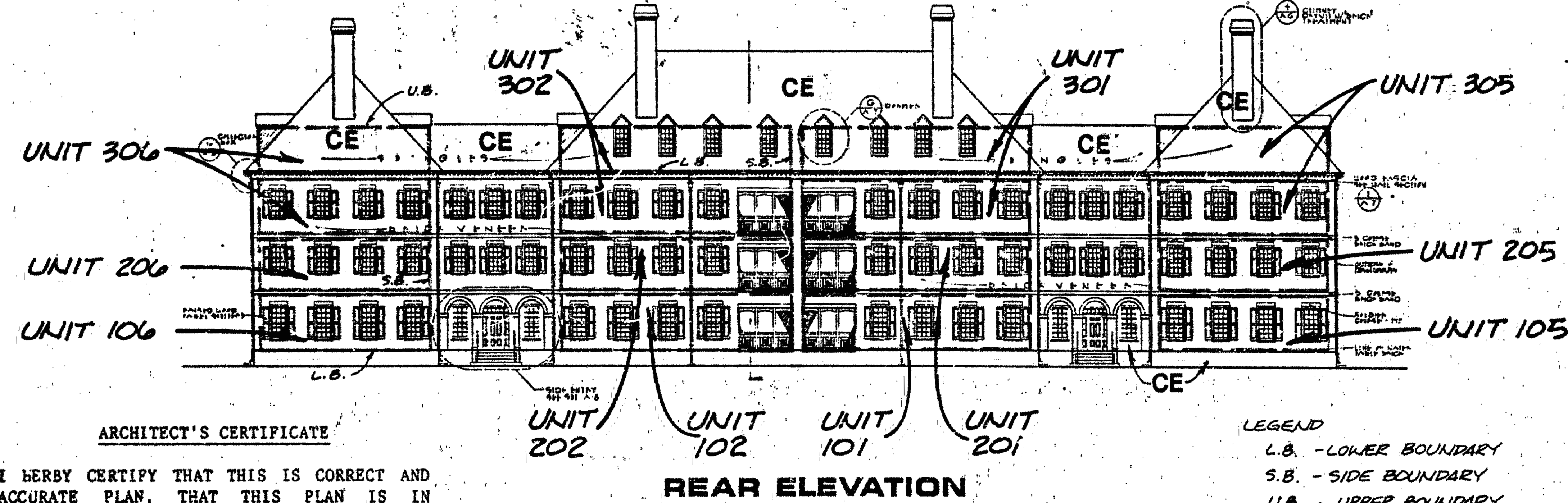


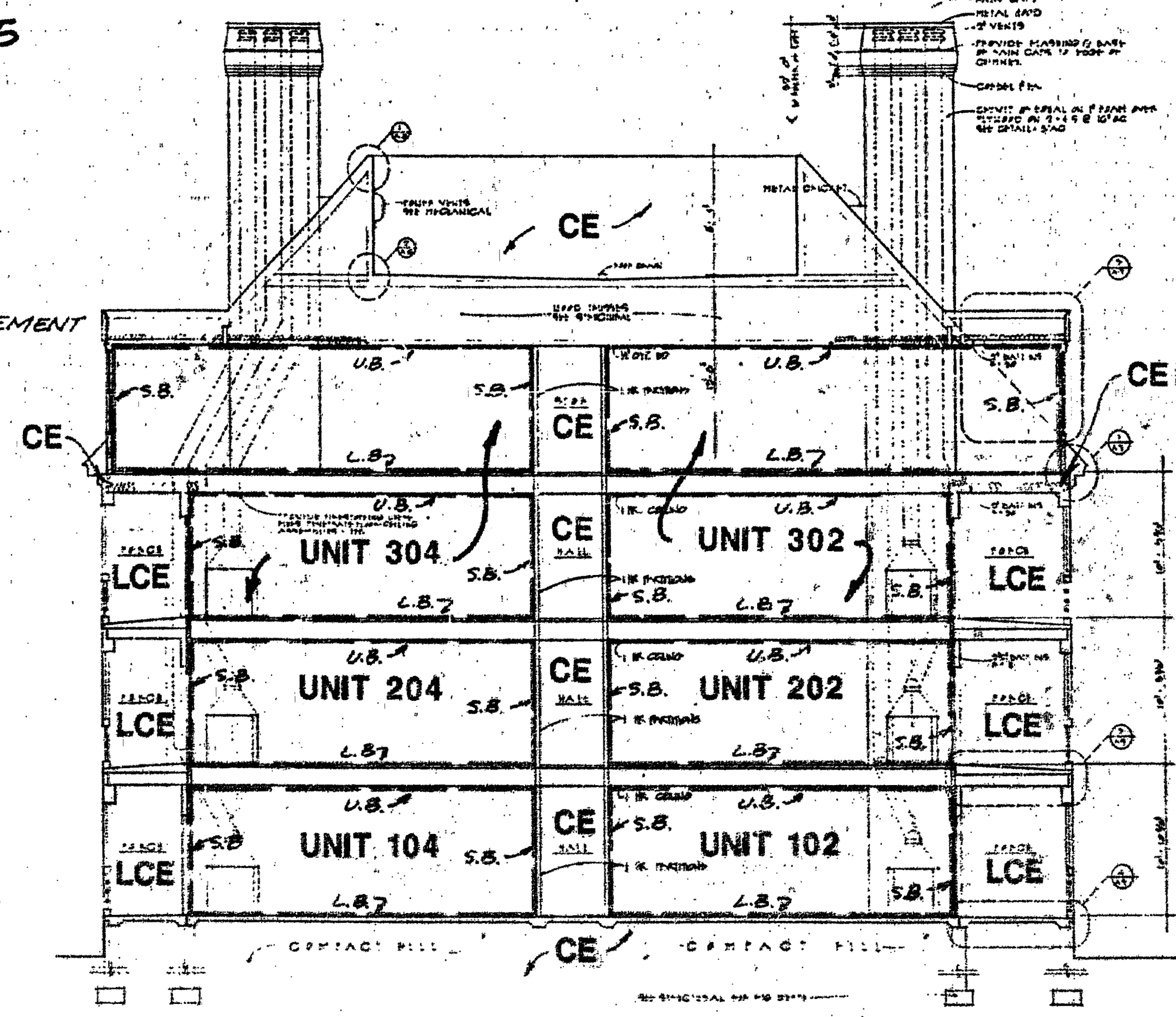
FRONT ELEVATION



BUILDING SECTION A - A



REAR ELEVATION



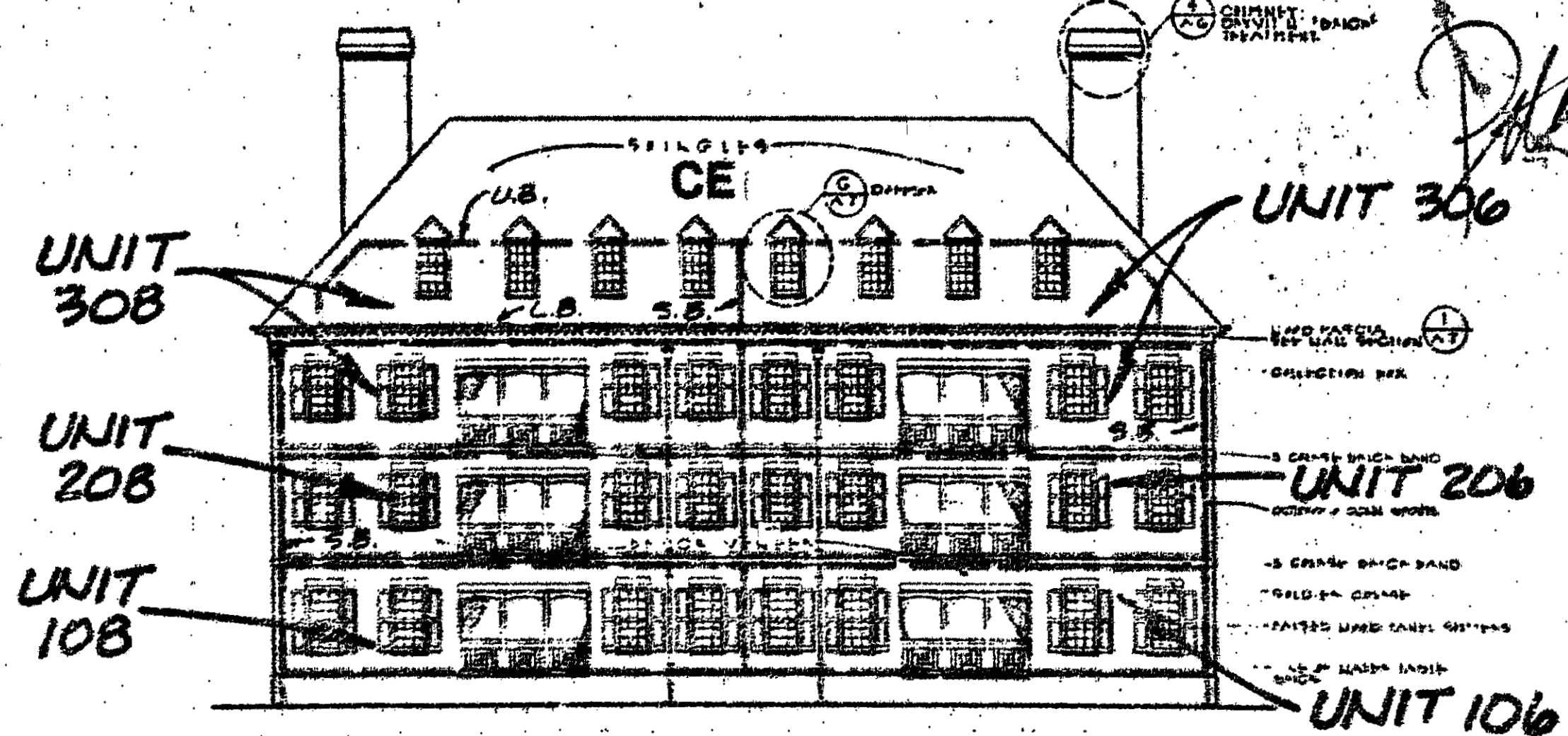
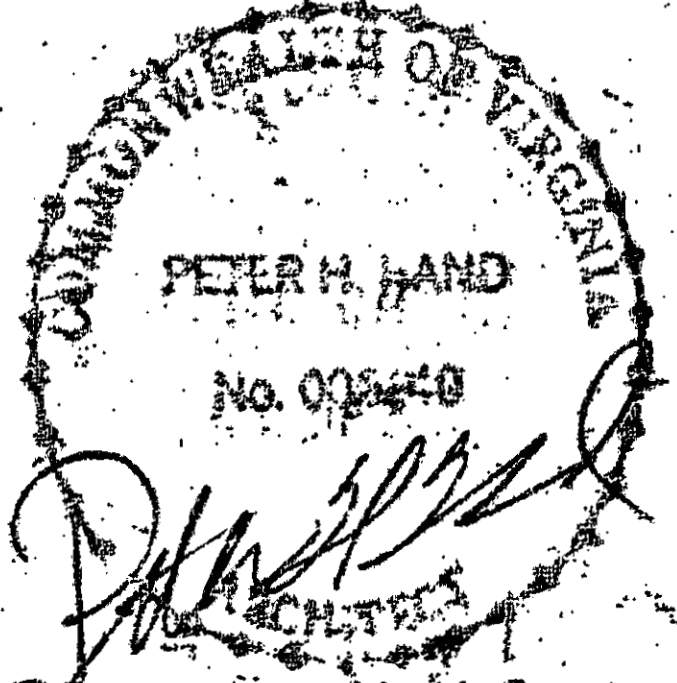
BUILDING SECTION B - B

ARCHITECT'S CERTIFICATE

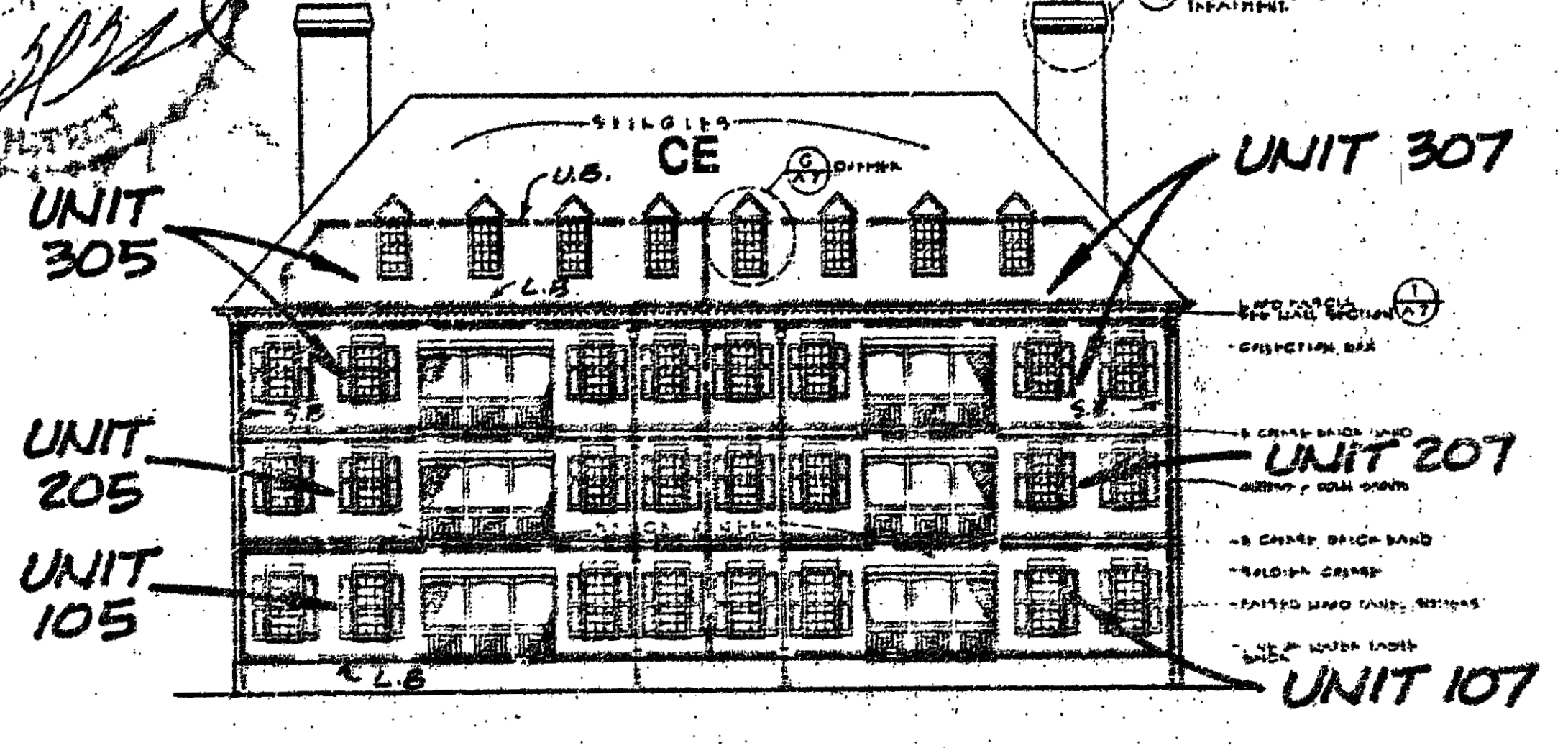
I HERBY CERTIFY THAT THIS IS CORRECT AND ACCURATE PLAN, THAT THIS PLAN IS IN COMPLIANCE WITH VIRGINIA CODE ANN. SUBSECTIONS 55-79.58 (b) AND (e), AND THAT THE UNITS DEPICTED HEREON HAVE BEEN SUBSTANTIALLY COMPLETED.

Peter H. Hand
 PETER H. HAND, A.I.A. DATE 8/1/80

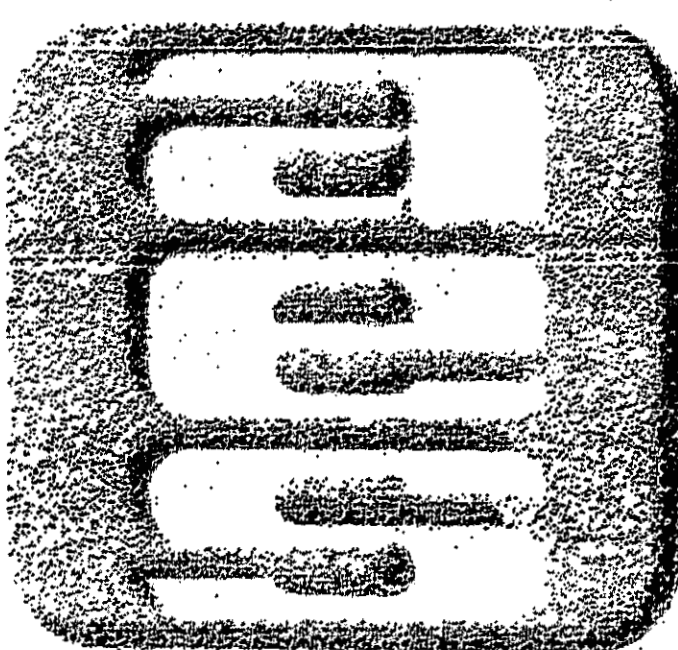
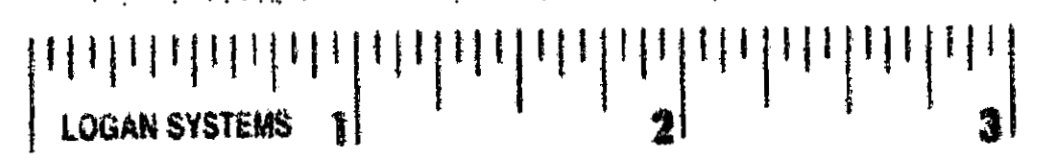
- LEGEND
 L.B. - LOWER BOUNDARY
 S.B. - SIDE BOUNDARY
 U.B. - UPPER BOUNDARY
 CE - COMMON ELEMENT
 LCE - LIMITED COMMON ELEMENT



RIGHT SIDE ELEVATION



LEFT SIDE ELEVATION



AES, a professional corporation
 5248 Old Towne Road, Suite 1
 Williamsburg, Va. 23185
 804-253-0040
 Engineering, Planning, Surveying

EXHIBIT A - 3
 PLAT OF CONDOMINIUM
THE MANOR HOUSE
AT FORD'S COLONY,
A CONDOMINIUM
 PHASE ONE
 OWNER / DEVELOPER: REALTEC INCORPORATED
 POWHATAN DISTRICT JAMES CITY COUNTY VIRGINIA

No.	DATE	REVISION / COMMENT / NOTE	BY

Designed	Drawn
Scale	DRAWN
DATE	JAN, 1982
Project No.	5652
Drawing No.	3 of 8