

Surveyor's Certificate

I hereby certify that this is a correct and accurate Plat, that this Plat is in compliance with the Condominium Act, Title 55, Chapter 4.2, Sections 55-79 through 55-79.103 of the Code of Virginia of 1950, as amended.

*Paul C. Small*  
Paul C. Small, C.L.S.

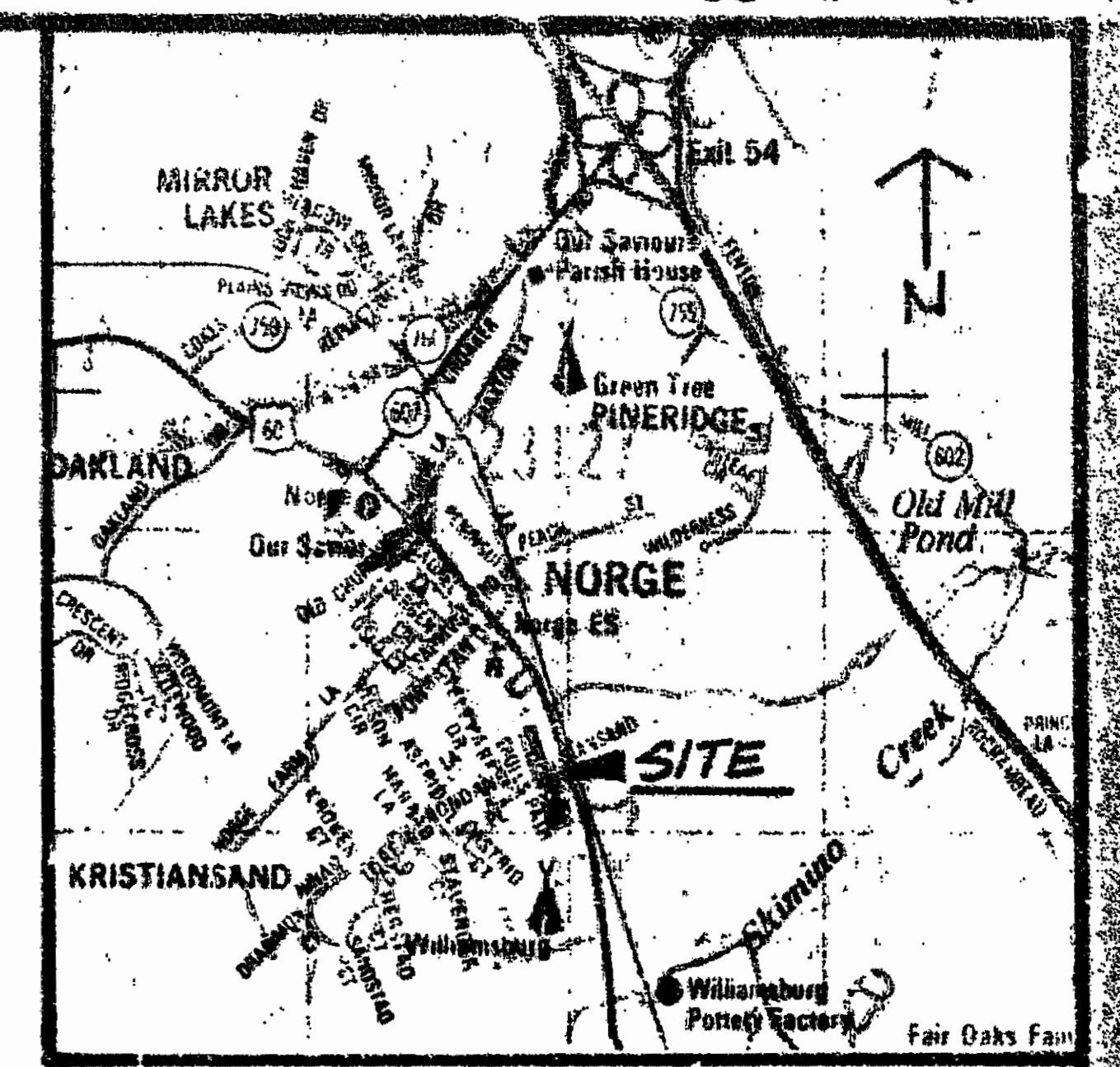
8/27/90  
Date

CE - Common Elements:

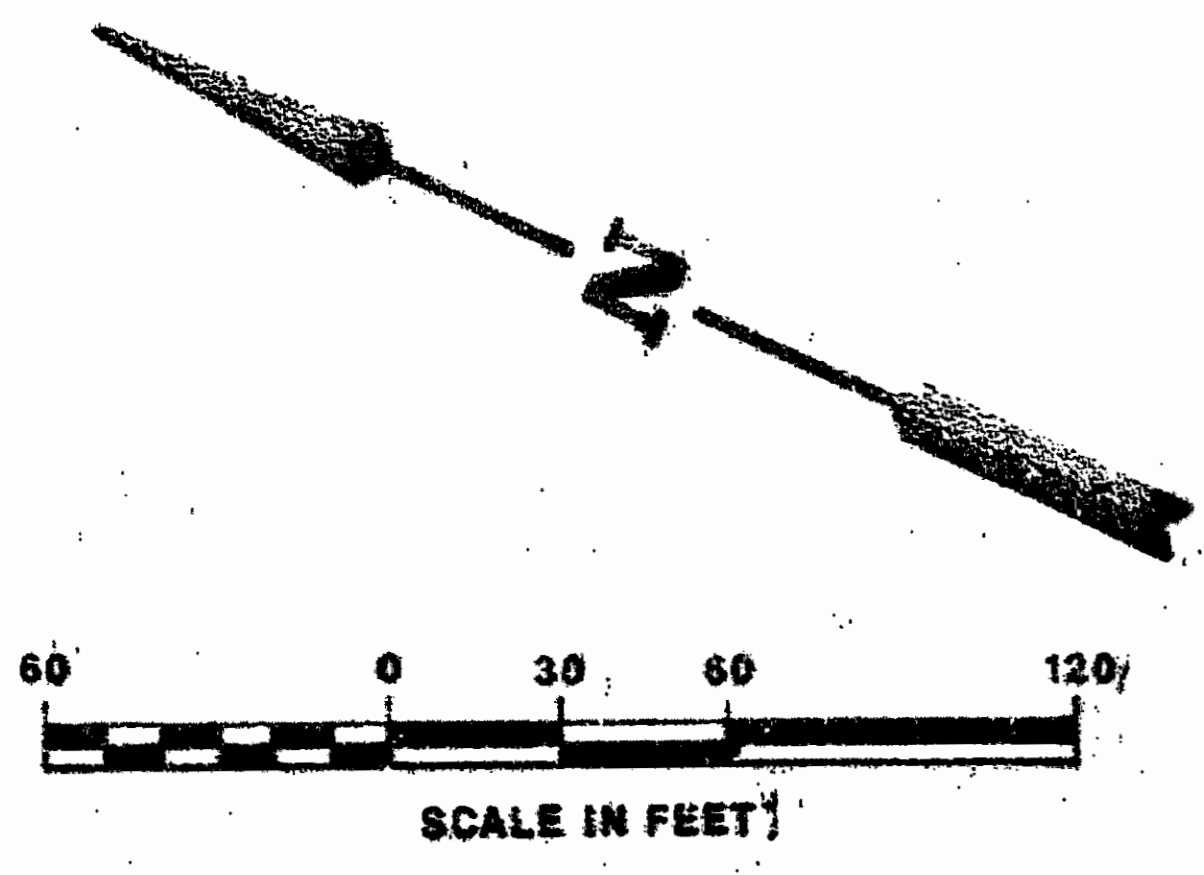
Common Elements include all portions of the Condominium other than the units shown and designated hereon and defined in the Condominium Documents and the Limited Common Elements. Examples of Common Elements are: parking facilities, paved areas, the grounds (whether or not landscaped), all portions of the buildings not a part of the units and all conduits, installations, wires, pipes, etc. which serve other Common Elements or which serve more than one unit.

LCE - Limited Common Elements:

Limited Common Elements include all items of apparatus, including, without limitation, any heating and air conditioning equipment designed to serve a single condominium unit as defined in the Condominium Documents.

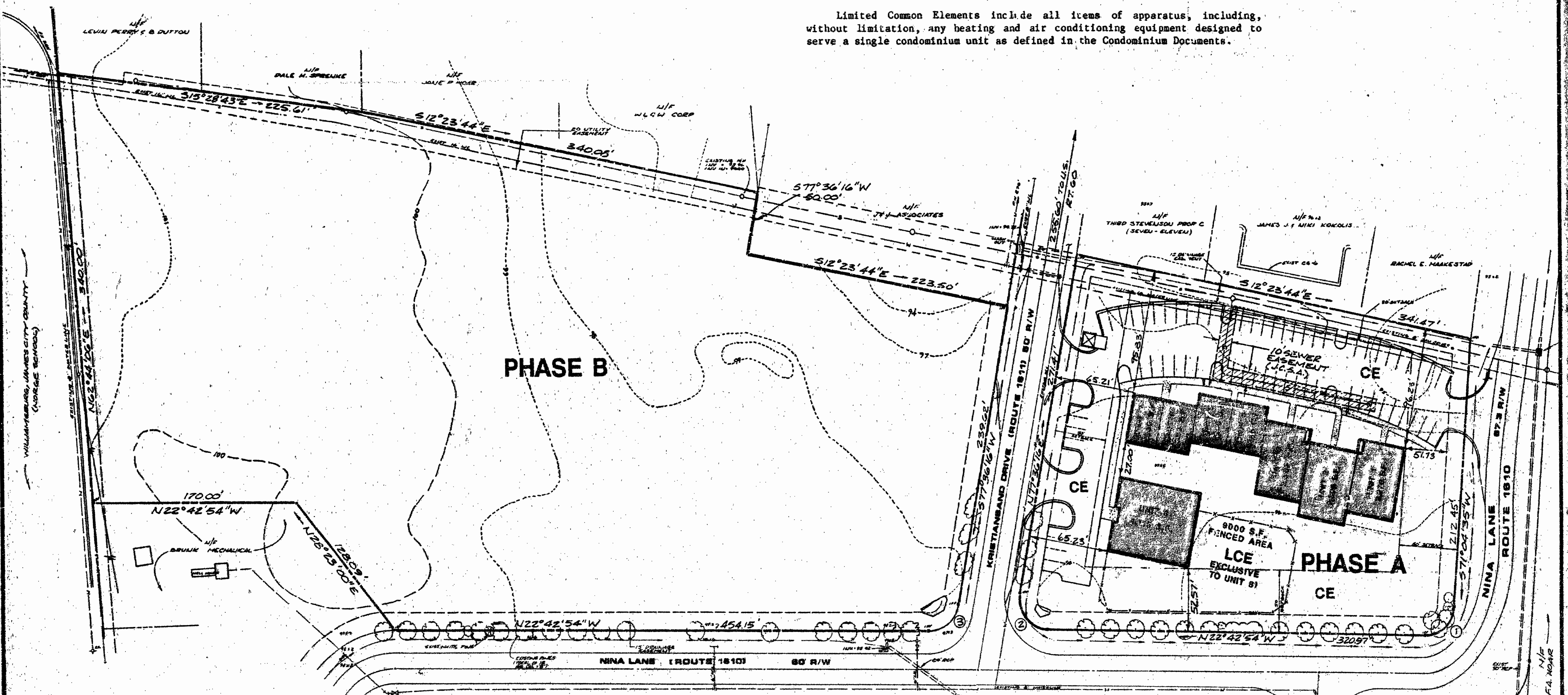


LOCATION MAP 1"=2000'



NOTE:

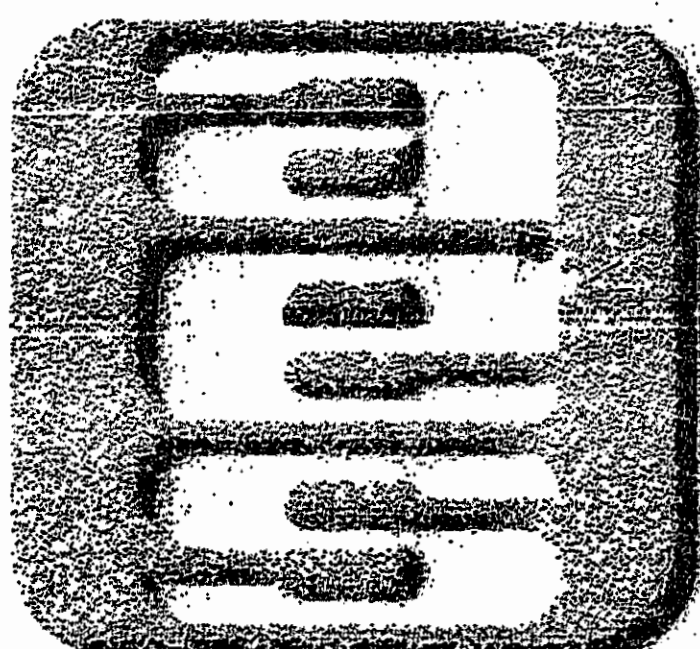
THIS PLAT CORRECTS NOTATIONAL DIFFERENCES RELATING TO THE SQUARE FOOTAGE OF UNITS 1 AND 2 SHOWN ON ORIGINAL PLAT OF RECORD FOUND IN D.B. 47 AT PAGE 55.



CURVE DATA

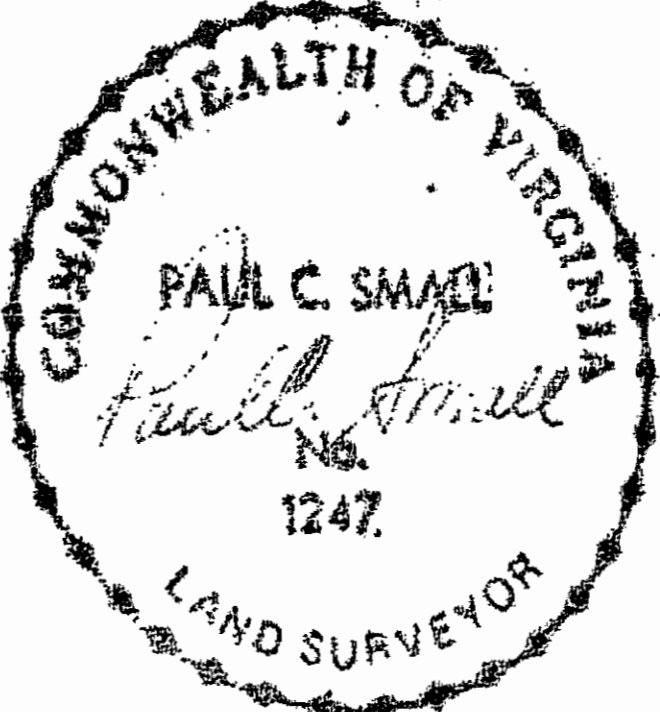
NO.	DELTA	RADIUS	LENGTH	TANGENT	CHORD	CHORD BEARING
1	86°12'31"	25.00'	37.62'	23.39'	34.17'	N65°49'10"W
2	100°19'10"	25.00'	43.77'	29.96'	38.39'	N27°26'41"E
3	79°40'50"	25.00'	34.77'	20.86'	32.03'	N62°39'19"W

EXHIBIT A



**AES**, a professional corporation  
1761 Jamestown Road, Williamsburg, Va. 23185  
804-253-0040  
Engineering, Planning, Surveying

PLAT OF CORRECTION OF  
**KRISTIANSAND OFFICE PARK**  
(A CONDOMINIUM)  
JAMES CITY COUNTY VIRGINIA



NO.	DATE	REVISION / COMMENT / NOTE	BY
3	8/21/90	REVISED AREA OF UNITS 1 AND 2	POS
2	1-22-89	Removed B from site	
1	8-2-89	Revised Fenced Area to 9000 SF	CSL

Designed SOW	Drawn CAN/GSB
Scale 1"=50'	Date 8/27/90
Project No. 6661	
Drawing No. 1 of 3	