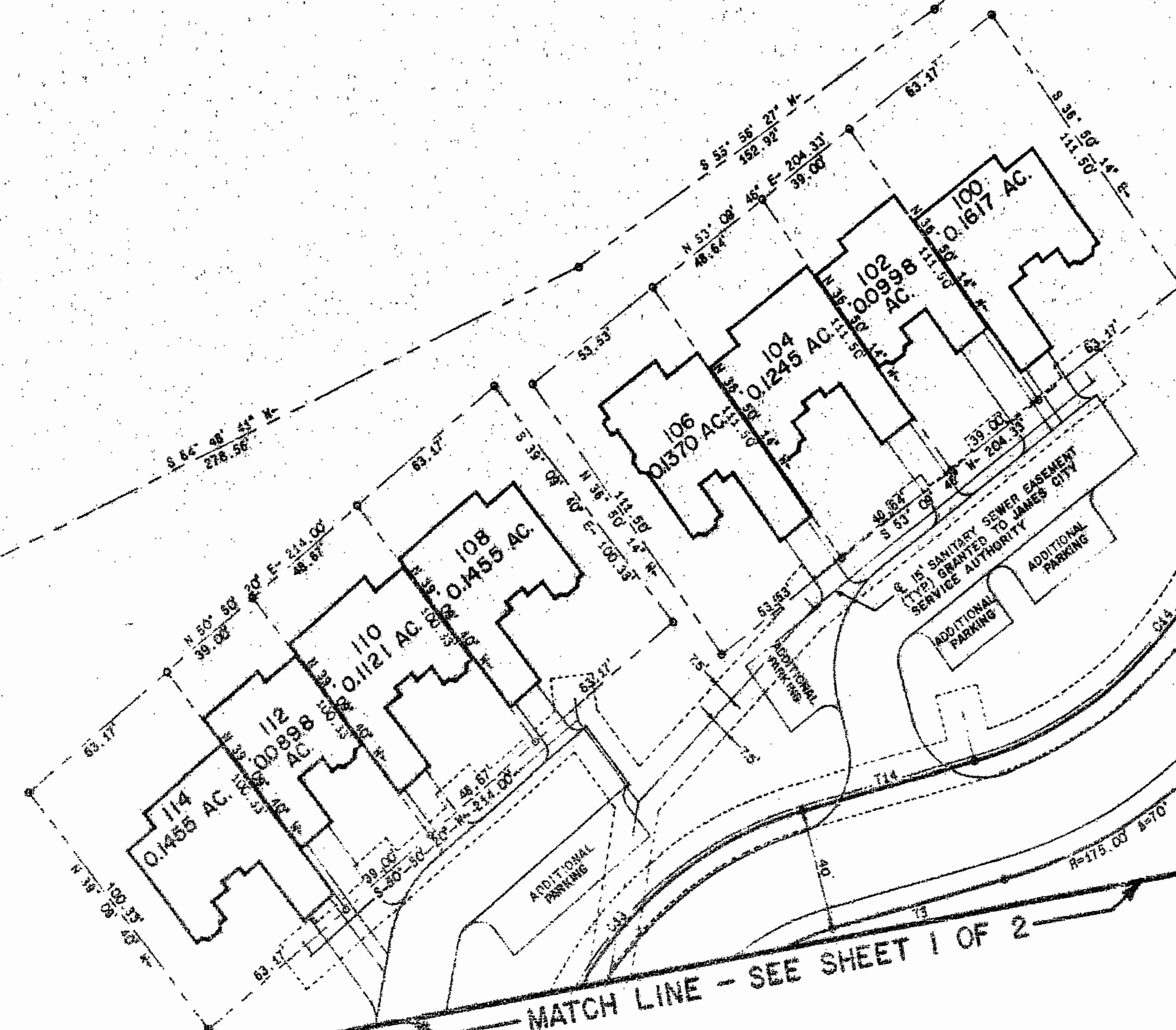


WAREHAM'S POND ROAD



BUSCH PROPERTIES, INC.

WICKHAM'S GRANT



MATCH LINE - SEE SHEET 1 OF 2

237 p.m.  
1990  
488  
839

PLAT OF  
WAREHAM'S POINT  
BEING A SUBDIVISION OF PROPERTY OF  
BUSCH PROPERTIES, INC.  
JAMES CITY COUNTY VIRGINIA  
SCALE: 1" = 50' 6/29/90  
LANGLEY and McDONALD  
A PROFESSIONAL CORPORATION  
ENGINEERS-PLANNERS-SURVEYORS  
VIRGINIA BEACH & WILLIAMSBURG, VIRGINIA  
SHEET 2 OF 2

